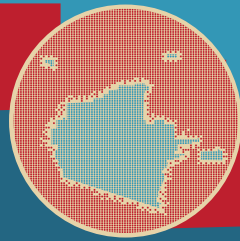


# Which



# COVID-19

# face mask is best for me?

Cloth / 2-3 Ply Face Mask



Surgical Face Mask



Cloth & surgical face masks fits snug across the face. Generally more comfortable to wear for long stretches of time and everyday use. Helps prevent spread of large respiratory droplets when wearer coughs or sneezes. Cloth face coverings are made with washable fabric that can be cleaned for reuse. Surgical masks if stored properly can be reused up to 14 days. These masks are for the everyday general population.

N95/KN95 Face Mask



N95 & KN95 fits tightly over the mouth and nose with restricted airflow, intended for short duration of use. These face masks are made with high grade materials intended for medical professionals and other personnel at risk or working in close proximity to dangerous airborne particles.

