



Tohono O'odham Nation Health Care (TONHC)

COVID-19 Situation Update: November 4, 2020

T-Ñukuda Ha'icu Cihañig

This is a rapidly evolving situation. Information is based upon data as of November 4, 2020 at 7:00 and may change as more data becomes available.

COVID-19 Data among Members of Tohono O'odham Nation (TON)

Total Cases

598

Percent Positive
Tests This Week

9%

Recovering

444

Recovering (%)

74%

Deaths

29

COVID-19 Contacts Interviewed

1,585

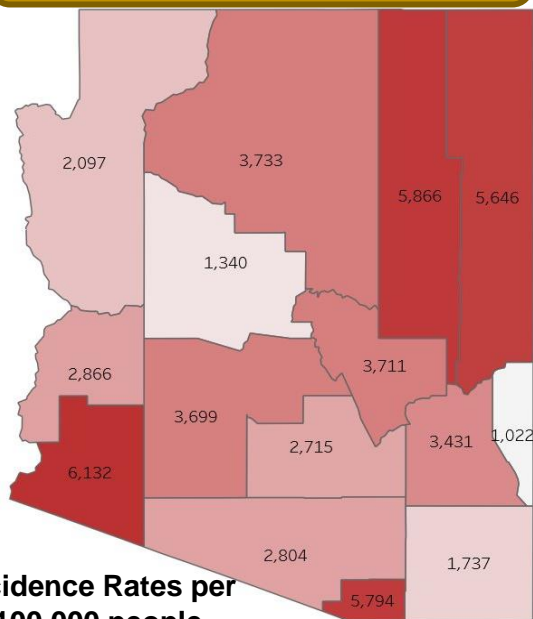
**Pima County COVID-19 School Reopening
Recommended Delivery Model: Hybrid
(10/29/2020)**

COVID-19 Cumulative Incidence Rate among TON members residing on the Tohono O'odham Nation

2,842 per 100,000

Arizona

3,486 per 100,000

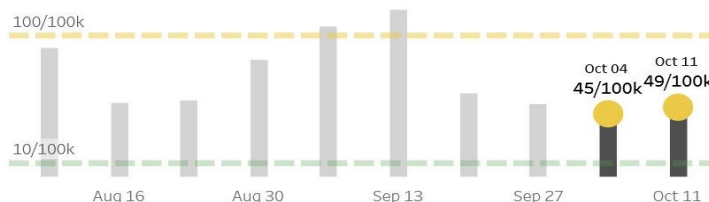


Incidence Rates per
100,000 people

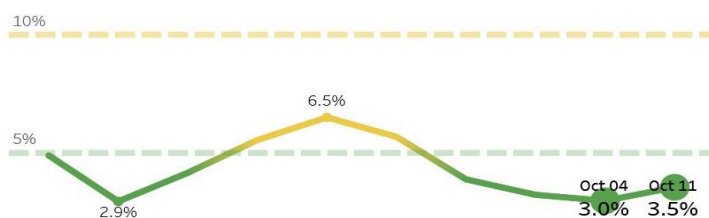
Showing data for **Pima County**
(Southeastern Region)

Recommended Delivery Model: **Hybrid**

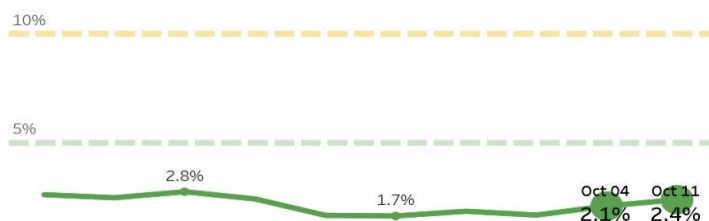
1) Cases per 100,000 individuals



2) Percent positivity



3) Hospital visits for COVID-like illnesses in the region

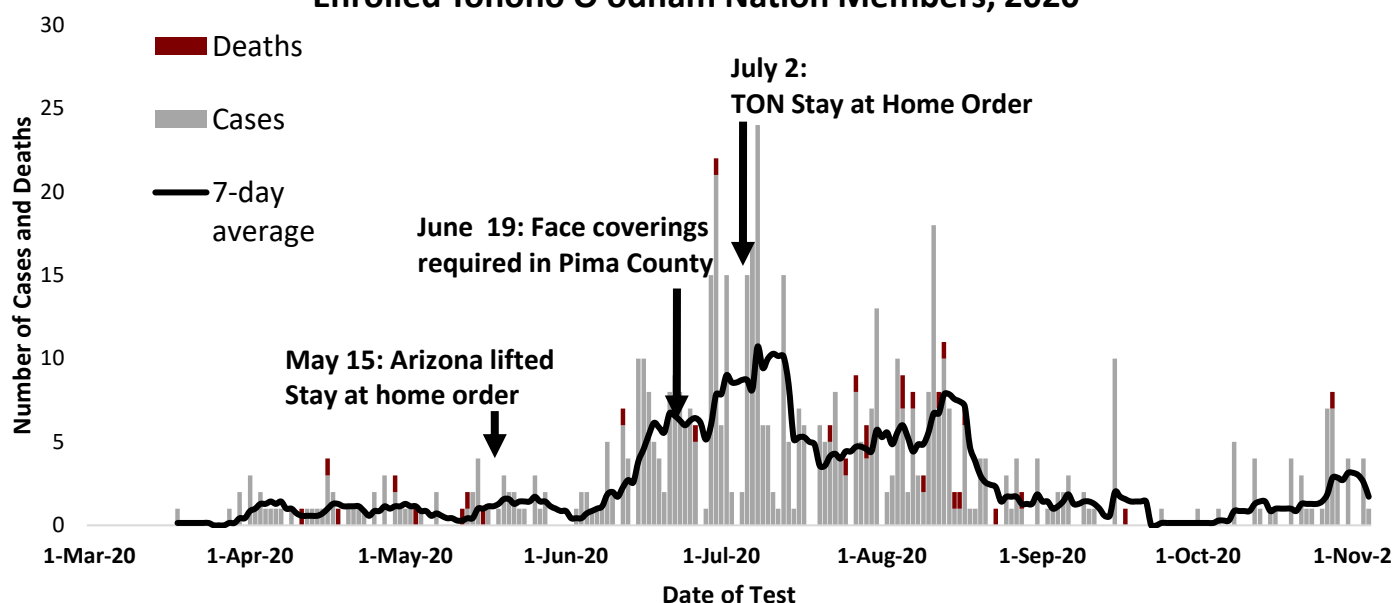


Incidence rate is the number of new cases of COVID-19 in the population over a specified period of time. This allows comparison of areas with different population sizes. Population size is from <http://www.tonation-nsn.gov/districts/> (Fall 2016), accessed 8/26/20.

TONHC Situation Update 11/4/2020 7:00

Wear a mask, physically distance, and wash your hands to protect Tohono O'odham Nation

Confirmed COVID-19 Cases and Deaths by Date among Enrolled Tohono O'odham Nation Members, 2020



7-day average is the average of cases for that day and the 6-days prior

What's NEW?

The number of COVID-19 cases, hospitalizations, and deaths are increasing rapidly in many states across the USA. This past week, the USA hit the highest daily COVID-19 case count ever since the beginning of the pandemic. Arizona continues to be concerned with a new surge emerging in the state. **Arizona and Pima County are again reporting increases in the number of COVID-19 cases. In the Tohono O'odham Nation, COVID-19 cases are also increasing, with a 7-day average of two cases/day among members.** All TONHC clinics have sufficient testing available for anyone who would like COVID-19 testing. Please call ahead for an appointment.

As COVID-19 cases are increasing locally, we urge the public to continue precautions known to help prevent the spread of COVID-19:

- Wear masks in public.**
- Stay at least a 6-foot distance from other people.**
- Avoiding gatherings of any size.**
- Wash your hands frequently with soap and water or alcohol sanitizers.**
- If you think you were exposed to COVID-19, call to ask about being tested.**

Several COVID-19 vaccine studies are taking place and must have approval from the US Food and Drug Administration (FDA) before distribution. CDC, state, and local health departments,

	Enrolled Member of Tohono O'odham Nation (TON)	Pima County	Arizona
Total Cases	598	29,291	250,633
Incidence Rate (per 100,000)	2,842	2,803	3,486
Number Deaths	29	647	6,059
Deaths (% of total cases)	5%	2%	2%
Number Hospitalized	104	2,213	21,786
Hospitalized (% of total cases)	17%	8%	9%

TONHC Situation Update 11/4/2020 7:00

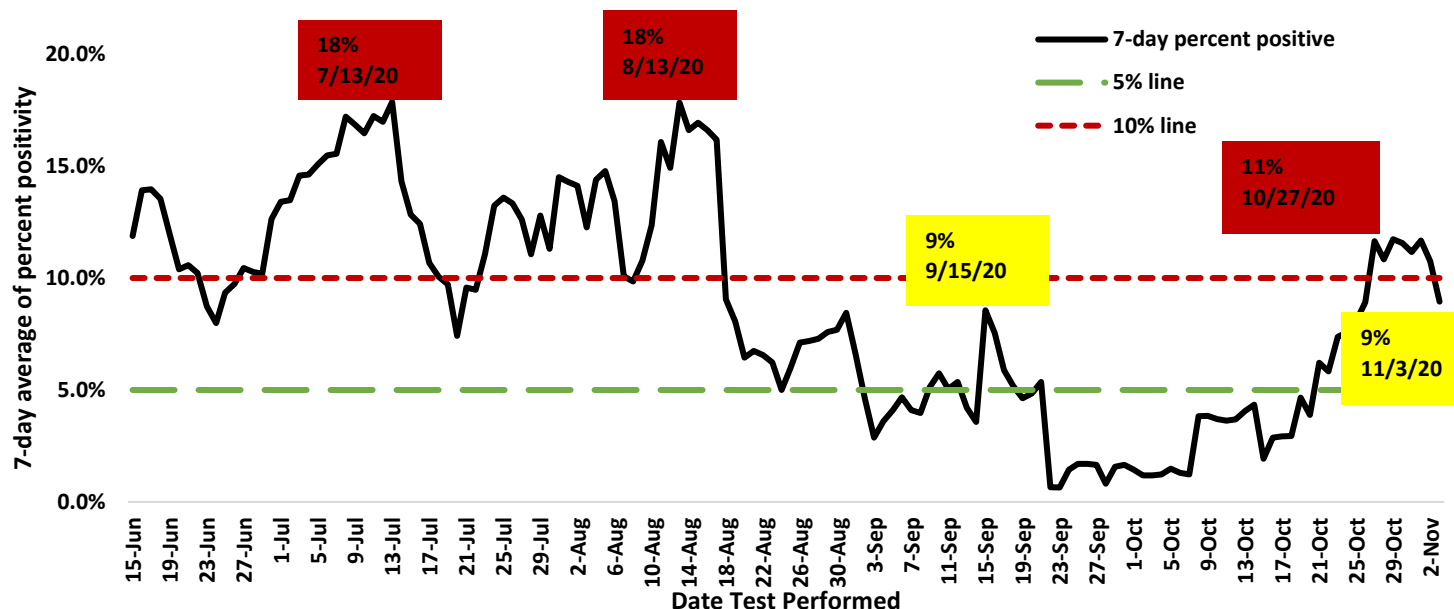
Wear a mask, physically distance, and wash your hands to protect Tohono O'odham Nation

including TONHC are collaborating with plans to provide vaccines when a safe and effective product is available. **TONHC is approved to offer COVID-19 vaccines when they become available. TONHC will continue to provide updates about any vaccination plans on the Tohono O’odham Nation.**

Please get your flu vaccine. Seasonal flu (influenza) vaccines are available at all our clinics. TONHC recommends all persons 6 months old and older receive the flu vaccine.

5,601 COVID-19 Tests Performed at TONHC

TONHC COVID-19 Test Percent Positivity 7-day Average, 2020



Weekly test percent positivity is calculated using the day tests were performed and 6-days prior (7-day detected “positive” results)/(7-day total tests performed) x 100

Arizona Department of Health Services Benchmarks

Benchmarks	Minimal	Moderate	Substantial
Cases	<10 cases/100,000	10-100 cases/100,000	>100 cases/100,000
Percent Positivity	<5%	5-10%	>10%
COVID-like Illness	<5%	5-10%	>10%

World, USA, Arizona COVID-19 Information

World (WHO):

Total cases: 47,059,867

Total deaths: 1,207,327

Updated: 4 November 2020, 01:58am GMT-7

USA (CDC): Total cases: 9,268,818

Total deaths: 230,893

Updated: Nov 3 2020 1:24PM

Arizona (AZDHS): Total cases:

241,165 (10/28) --> **250,633 (11/4)**

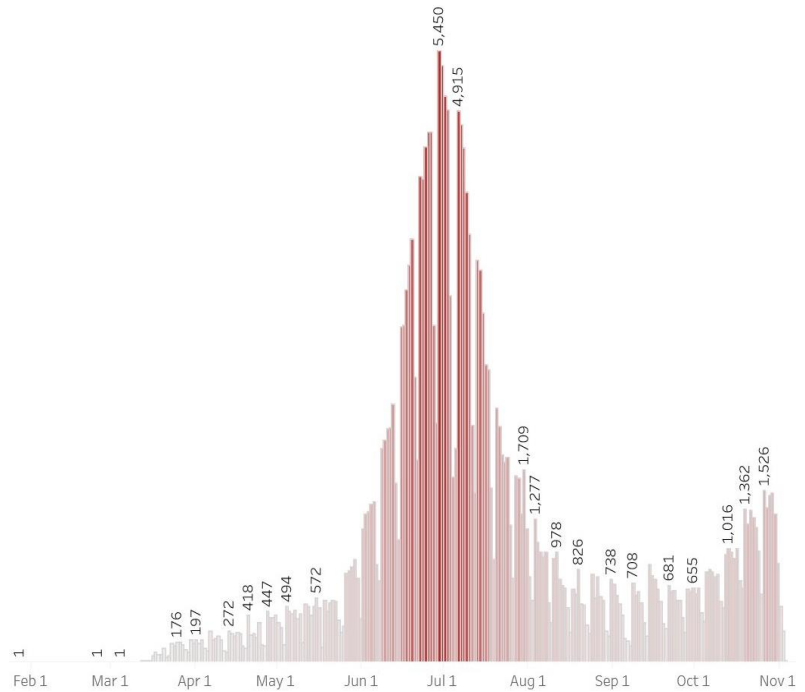
Total deaths in Arizona:

5,905 (10/28) --> **6,059 (11/4)**

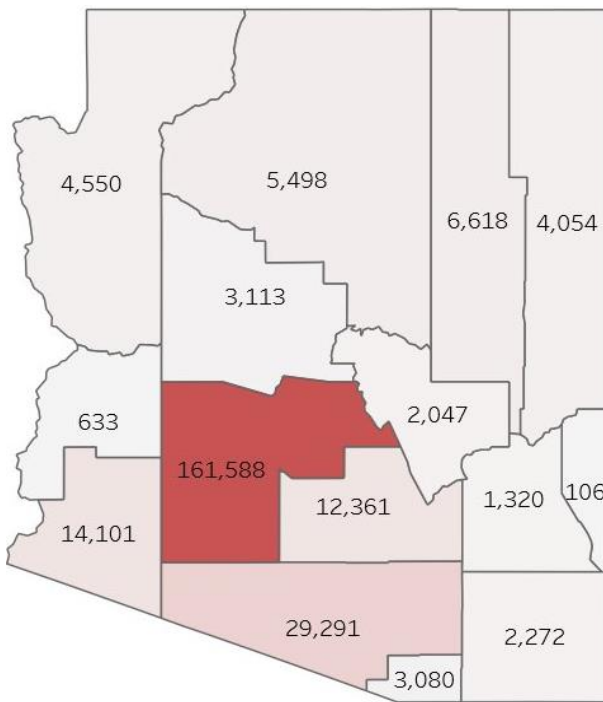
Total cases in Pima County:

27,962 (10/28) --> **29,291 (11/4)**

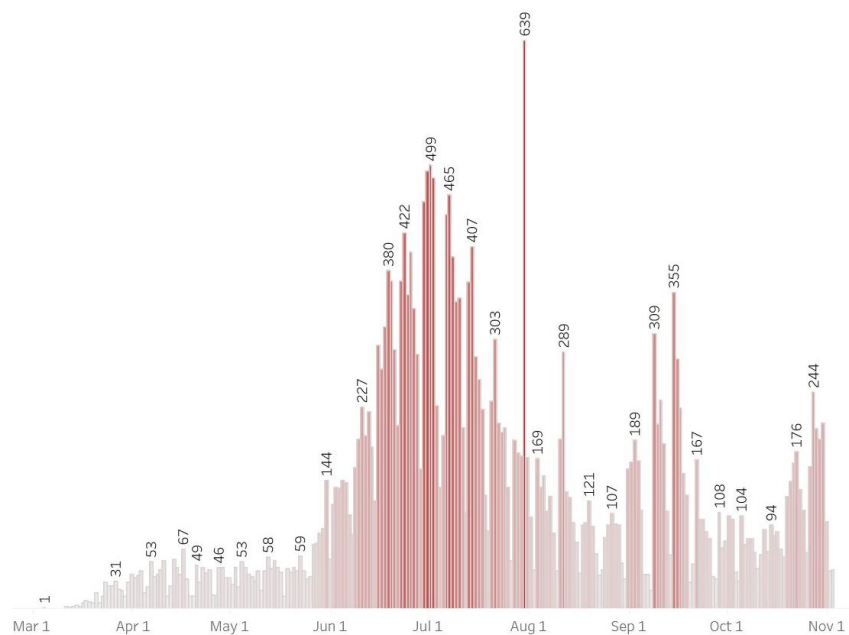
Arizona (AZ) Confirmed COVID-19 Cases by Day (11/4/2020)



COVID-19 Cases by County (11/4)



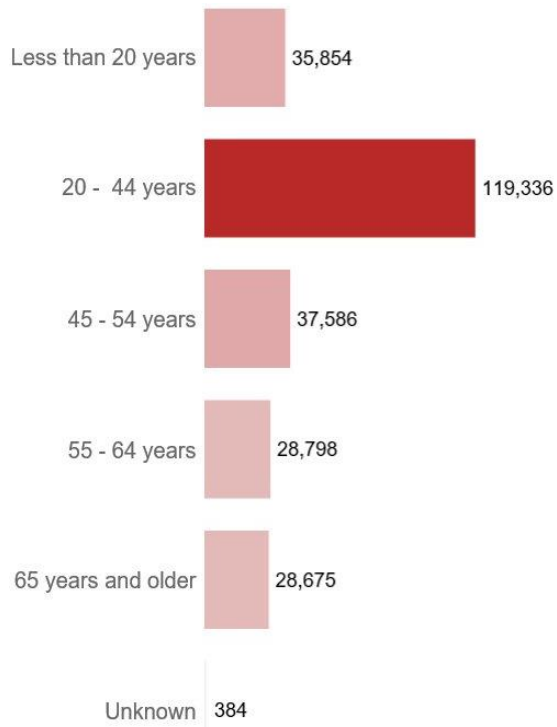
Pima County Confirmed COVID-19 Cases by Day (11/4)



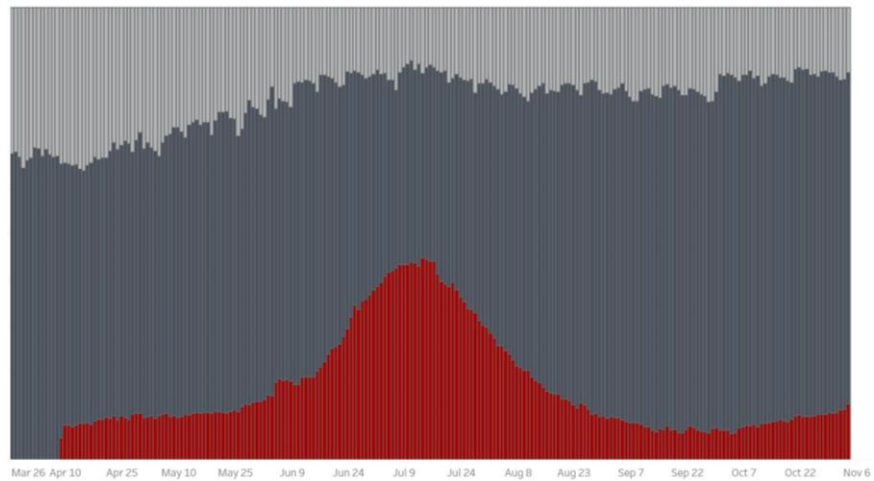
TONHC Situation Update 11/4/2020 7:00

Wear a mask, physically distance, and wash your hands to protect Tohono O'odham Nation

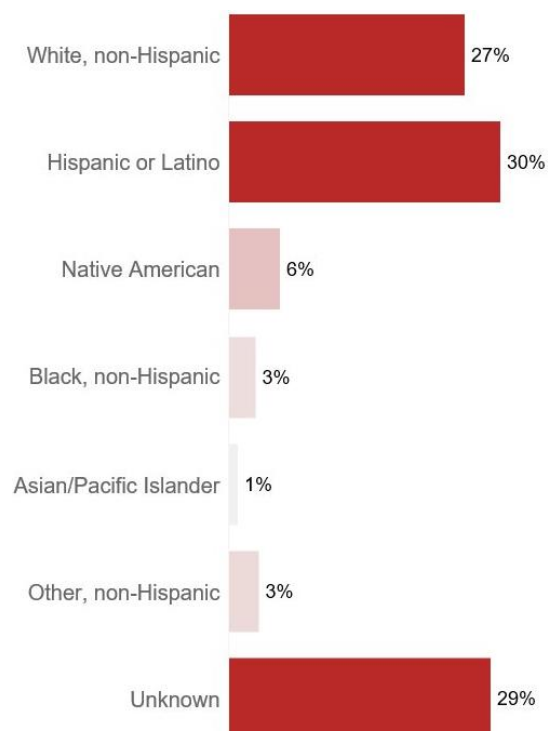
AZ COVID-19 Cases by Age Distribution (11/4)



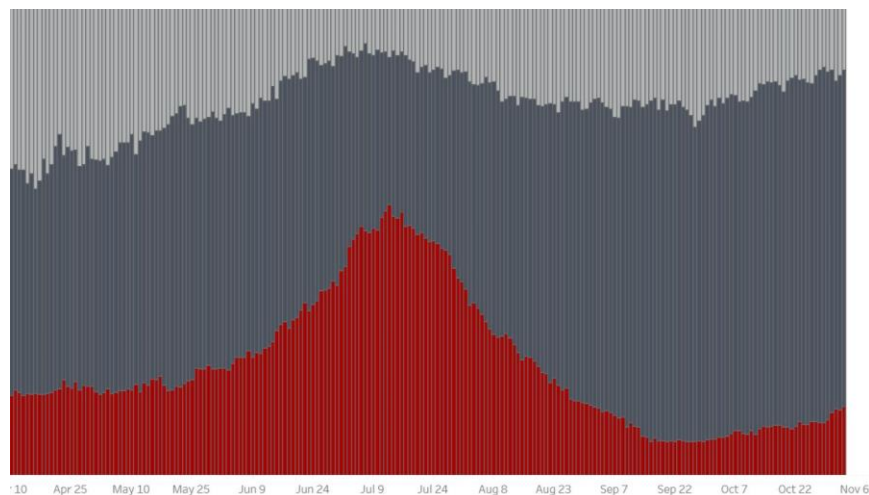
Number of Inpatient Beds in Use in AZ (86% in use on 11/3/20, 12% due to COVID-19)



AZ COVID-19 Cases by Race/Ethnicity

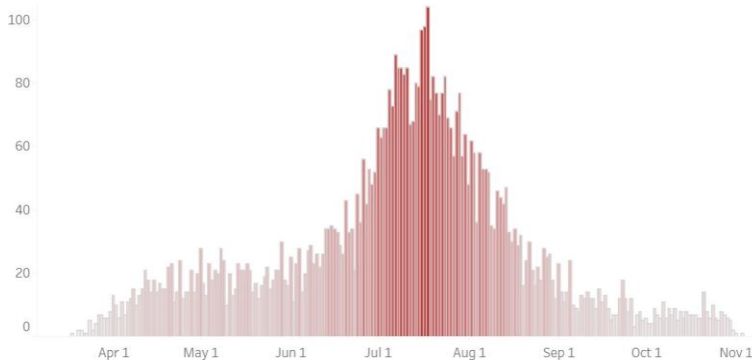


Number of Intensive Care Unit (ICU) Beds In Use AZ (86% in use 11/3/20, 15% due to COVID-19)

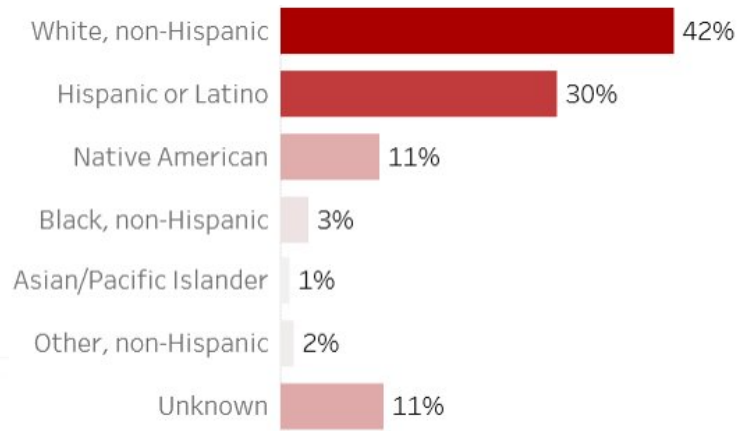


Arizona (AZDHS): 6,059 deaths, Updated November 4, 2020

COVID-19 Deaths by Date in Arizona



AZ COVID-19 Deaths by Race/Ethnicity



Tohono O'odham Nation COVID-19 Positive Case Information

	Enrolled Member of Tohono O'odham Nation	Enrolled Member of Another Tribe or Other	Total
Residing within Boundaries of Tohono O'odham Nation	371	21	392
Residing outside Boundaries of Tohono O'odham Nation	227	90	317
Total	598	111	709

598 members of the Tohono O'odham Nation have tested positive* for COVID-19 (as of 11/4/2020 at 7:00). On 10/28/2020, there were 586. This represents a **2%** increase over the last week. † The number of positive cases is over **8X** the number 21 weeks ago (72 on 6/9/2020).

371 members of the Tohono O'odham Nation who tested positive reside in the Tohono O'odham Nation. On 10/28/2020, there were 360. This represents a **3%** increase† over the

last week. The number of persons who reside in the Tohono O’odham Nation and tested positive for COVID-19 is **15.5x** the number 21 weeks ago (24 cases on 6/9/2020).

This is consistent with a surge in cases beginning approximately 6/15/2020.

- **444** members (74%) are recovering (among members of the Tohono O’odham Nation)[†]
- **29** deaths among members of the Tohono O’odham Nation and **3** members of another tribe.
- **1** death in hospital in Tohono O’odham Nation, 31 in hospitals outside the Tohono O’odham Nation.

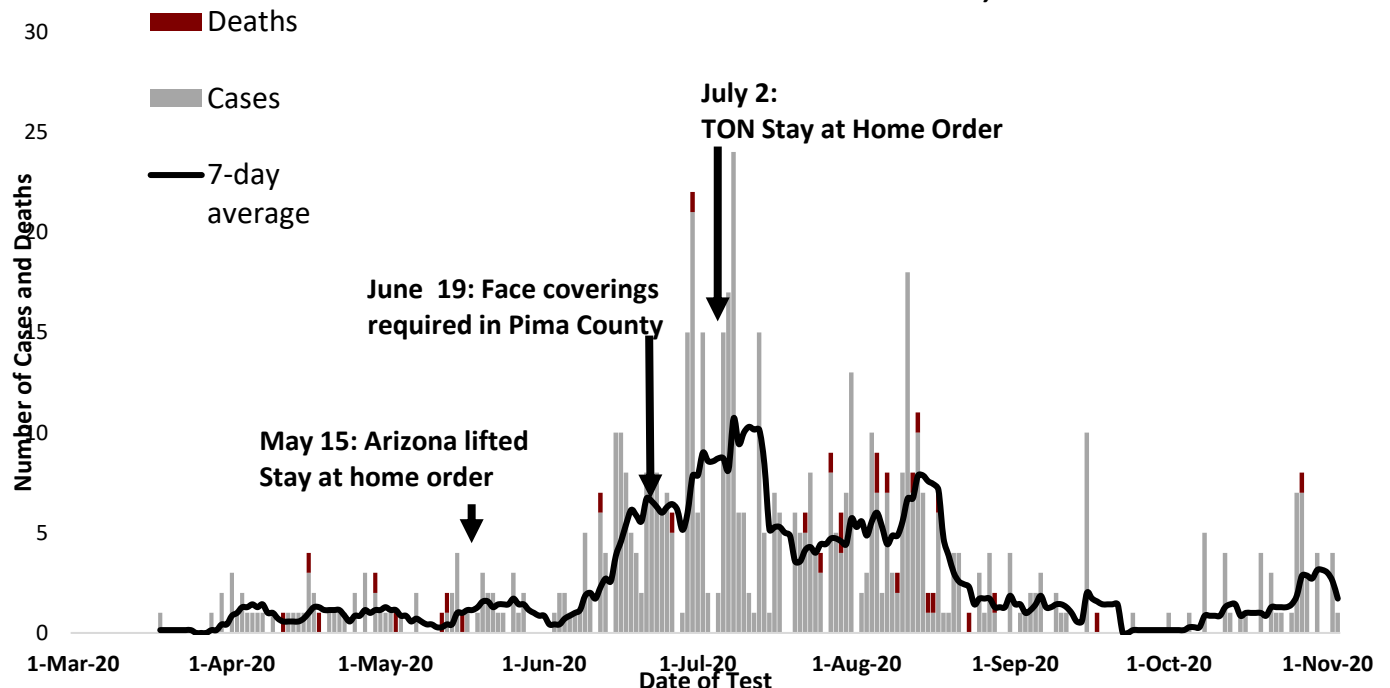
*COVID-19 positive result means COVID-19 test result of “detected”.

[†]Defined as percentage change (most recent number – previous number)/previous number * 100

[§]Absolute change in cumulative case count is the number of cumulative cases through week 2 subtracted from the number of cumulative cases through week 1, |week2 – week1|

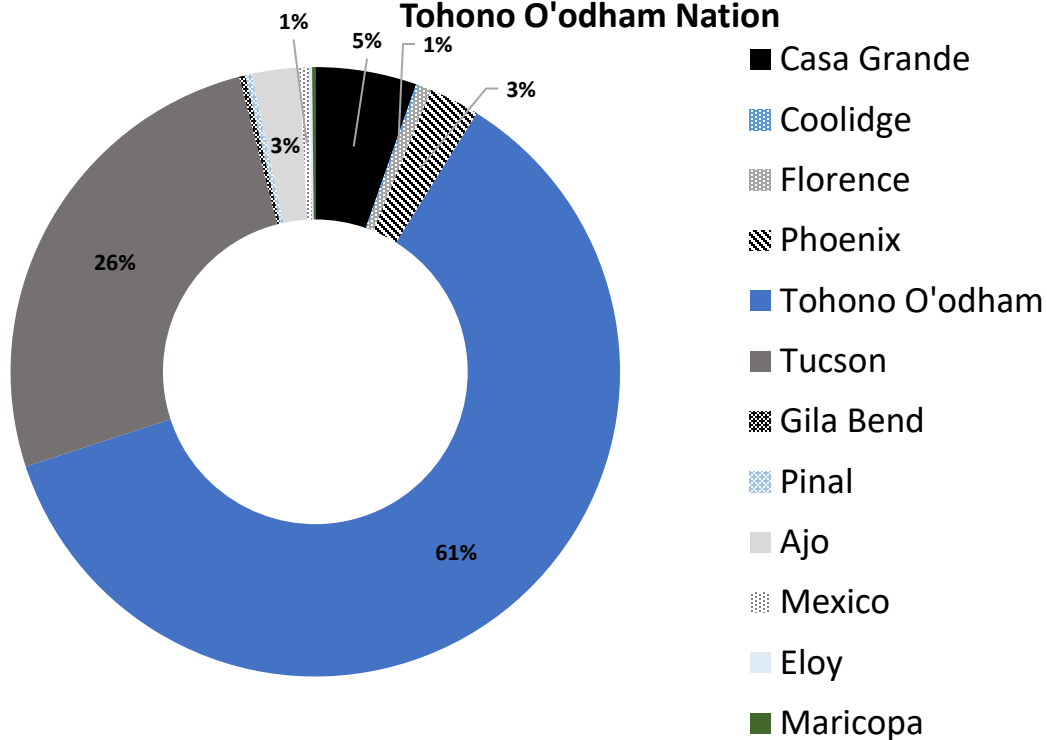
[¶]Recovering is defined as having diagnosis/symptom onset 14-days ago, improving, and no longer hospitalized.
7-day average is the average of cases for that day and the 6-days prior

Confirmed COVID-19 Cases and Deaths by Date among Enrolled Tohono O’odham Nation Members, 2020



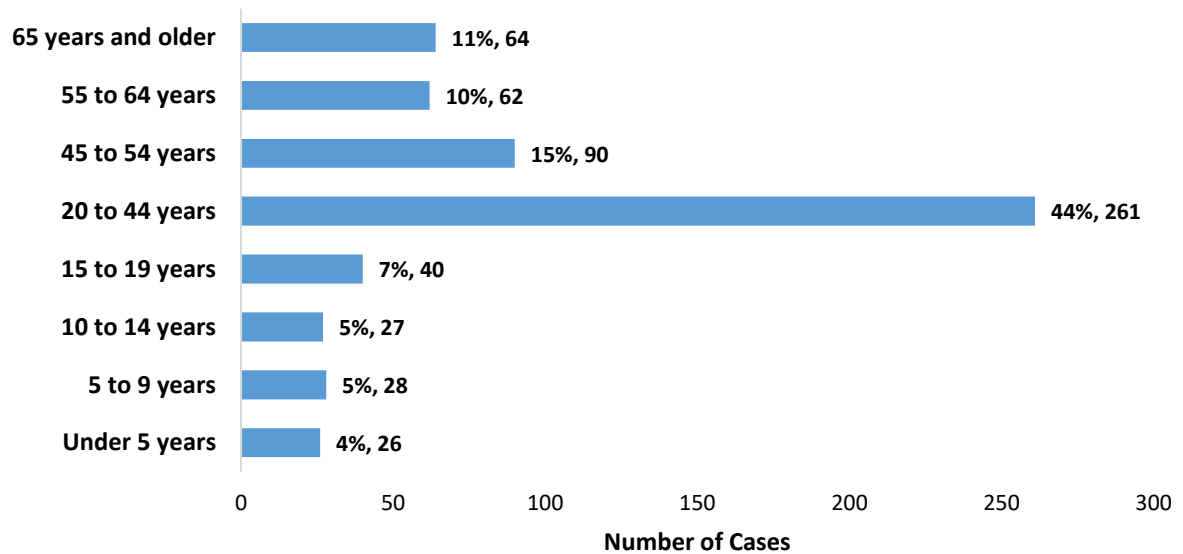
7/22/2020 was the first week that the percentage of persons residing in the Tohono O’odham Nation was over 50% of the cases.

Region of Residence for COVID-19 Cases among Members of the Tohono O'odham Nation



Some areas are <1%

Age Distribution of COVID-19 Cases among Tohono O'odham Members, 2020



Laboratory-confirmed COVID-19 among Tohono O'odham Nation Enrolled Members, 2020

	Count (n)	Percent (%)	State of Arizona Percent (%)
TON members tested positive for COVID-19	598		
Asymptomatic/Pre-symptomatic	69	12%	
TON Reside in Reservation	371	62%	
Hospitalized	104	17%	9%
Recovering	444	74%	
Died	29	5%	2%

	Median (years)	Minimum (months)	Maximum (years)
Age	36	1	100

	Male	Percent (%)	Female	Percent
Sex	236	39%	362	61%

At TONHC, we received the first presumptive positive test result for COVID-19 for a patient seen at San Xavier Health Center in the same day clinic on 3/30/2020. In response, we reached out to clinical staff and the patient/household/community to discuss exposure risk, how to monitor for symptoms, and help guide any recommendations for isolation or quarantine. We anticipate more cases in the future, and we are working together to tackle this challenge. Employee health has reached out to staff for contact tracing. Public health nursing has conducted community contact tracing. Please remember to keep patient and employee results confidential.

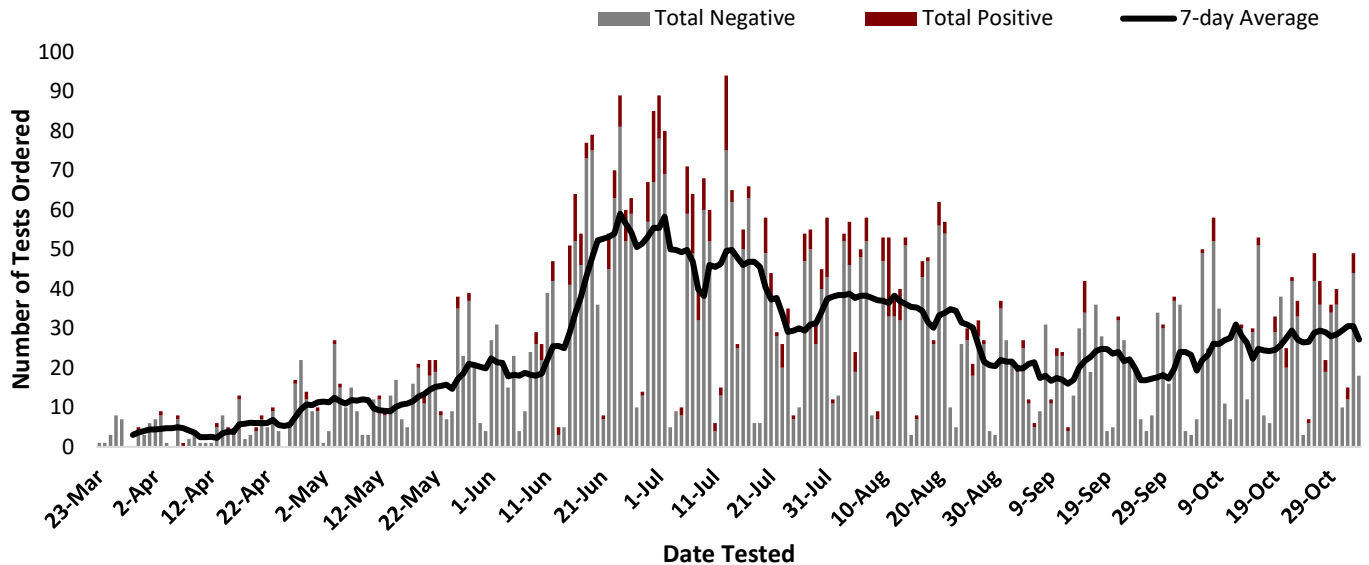
COVID-19 Laboratory Testing at TONHC

TONHC total number of COVID-19 testing (as of 11/4/2020 at 7:00): **5,601** tests performed:

- 5,163 = patients (anyone who receives care at a TONHC facility)
- 391 = employees
- 47 = first responders

We continue to increase our testing capacity. On 10/28/2020, there were 5,407 tests. As of 11/4/2020, **505** tests results were positive* for COVID-19. On 10/28/2020, there were 487 tests. The number of positive test results are over **13x** the amount compared to 21 weeks ago (since 6/9/2020). 38 total tests were positive on 6/9/2020. **16** TONHC employees have tested positive.

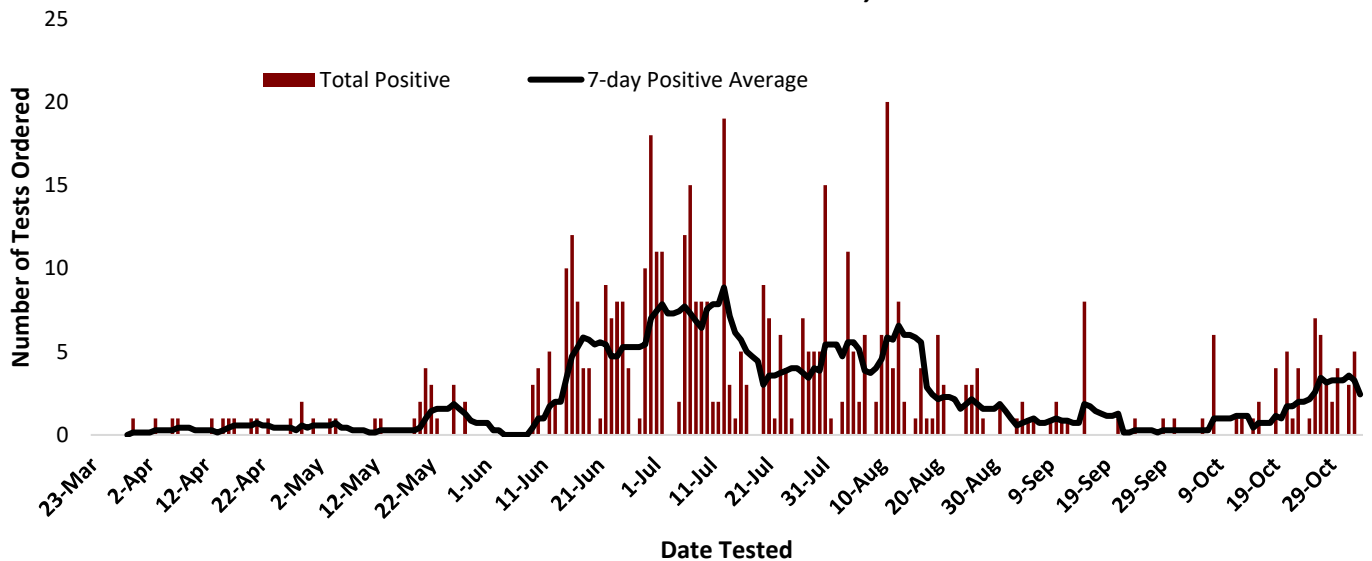
COVID-19 Tests Performed at Tohono O'odham Health Care by Result, 2020



7-day average is the average of cases for that day and the 6-days prior

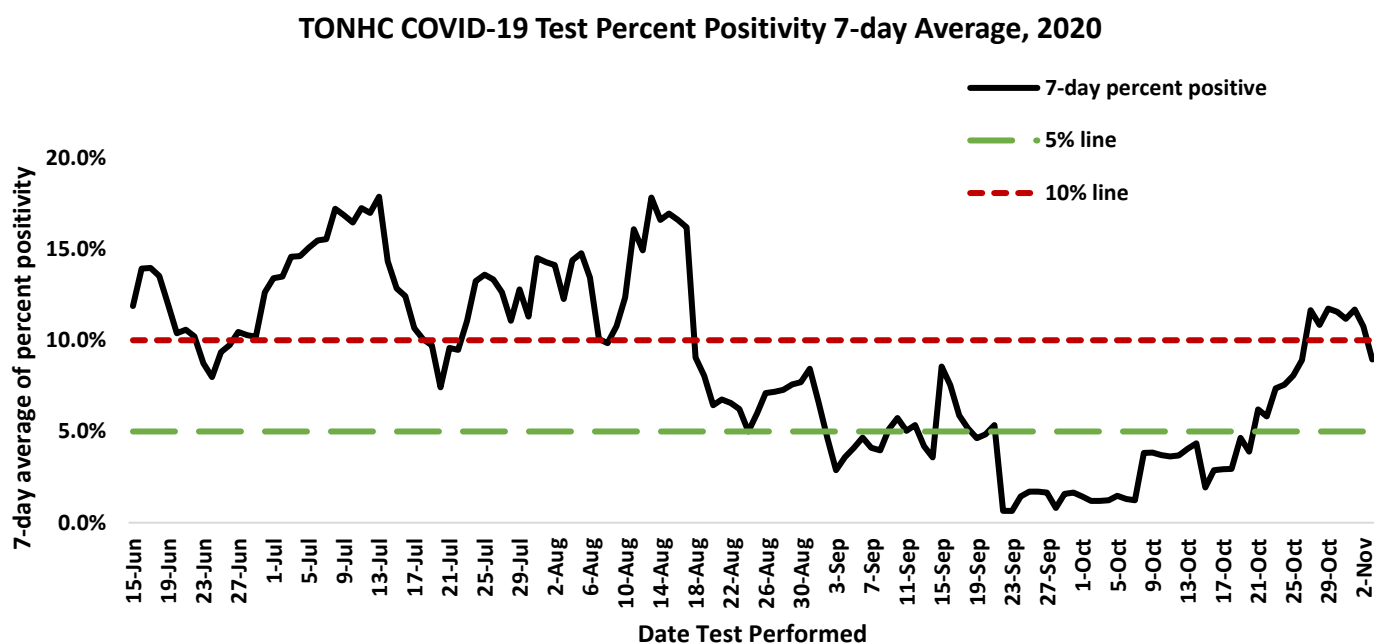
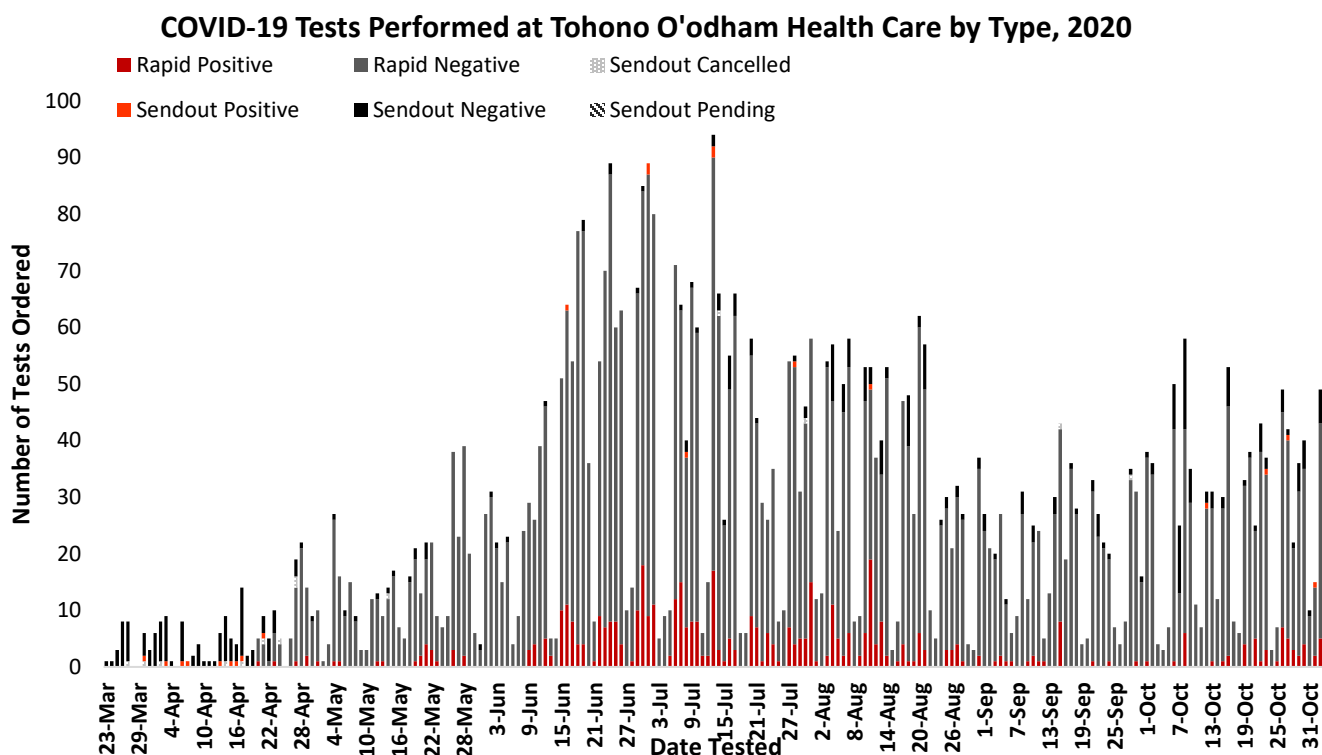
As of 11/4/2020 at 7:00, 4,005 TONHC individual patients have tested for COVID-19. This comprises of 19.6% of the TONHC User Population. User Population is defined as patients who have received care at TONHC at least twice in the past three years.

COVID-19 Positive Tests Performed at Tohono O'odham Health Care, 2020



7-day average is the average of cases for that day and the 6-days prior

COVID-19 testing began at TONHC on March 23, 2020. There is now same-day testing at San Xavier, Sells, and San Simon. This means all the equipment to run the tests are in the clinic laboratories at San Xavier, Sells, and San Simon. We began on-site same-day testing on April 20, 2020. There are two types of tests: send-out test or same-day/rapid test. Send-out testing is used for specific cases. As of 9/1/2020 on-site qualitative total antibody testing is available in specified cases.



* Weekly test percent positivity is calculated using the day tests were performed and 6-days prior (7-day detected "positive" results)/(7-day total tests performed) x 100%

TONHC Situation Update 11/4/2020 7:00

Wear a mask, physically distance, and wash your hands to protect Tohono O'odham Nation

We have nine on-site Abbott ID NOW™ machines that are used for same-day testing. We are pursuing avenues for more testing machines for on-site testing. In addition to expand our testing capabilities, medical assistants at TONHC completed competencies in performing COVID-19 nasal swab testing to assist with performing testing

Effective 9/24/2020, patients with no symptoms and no known exposure to someone with COVID-19 can be tested at TONHC. For all testing, please call and schedule an appointment at your clinic.

Please note testing criteria is accurate as of 9/25/2020 and may change in the future.

*COVID-19 positive result means COVID-19 test result of “detected” for tests performed at TONHC (San Xavier, San Simon, Sells, and off-site).

†Absolute change in cumulative case count is the number of cumulative cases through week 2 subtracted from the number of cumulative cases through week 1, |week2 – week1|

Arizona COVID-19 School Benchmarks

Pima County COVID-19 School Reopening Recommended Delivery Model: Hybrid

The Arizona Department of Health Services (ADHS) recommends county-specific public health benchmarks to be in the moderate or minimal transmission category in all three benchmarks in order to provide hybrid (virtual and in-person) learning.

The ADHS further defines community spread levels with the three thresholds outlined below. These thresholds are consistent with the national standards set by the Coronavirus Task Force.

The ADHS Schools Toolkit defines community spread levels with the three thresholds outlined below:

- CASES: a two-week decline in the number of cases OR a two-week case rate of less than 100 cases per 100,000 population within the county;
- PERCENT POSITIVITY: for initial opening, two weeks of percent positivity less than 7% within the county; and
- COVID-LIKE ILLNESS (CLI): two weeks with hospital visits due to CLI below 10% within the region.

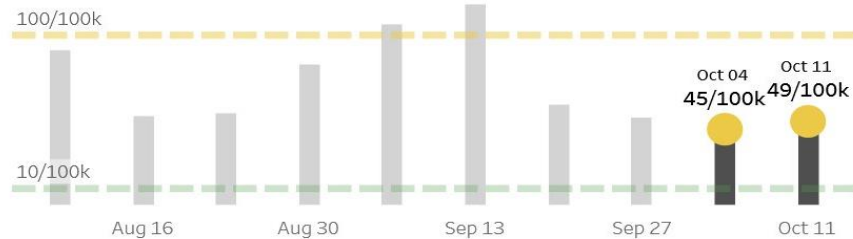
Arizona Department of Health Services, <https://www.azdhs.gov/preparedness/epidemiology-disease-control/infectious-disease-epidemiology/index.php#novel-coronavirus-schools>, accessed 8/26/20.

Benchmarks	Minimal	Moderate	Substantial
Cases	<10 cases/100,000	10-100 cases/100,000	>100 cases/100,000
Percent Positivity	<5%	5-10%	>10%
COVID-like Illness	<5%	5-10%	>10%

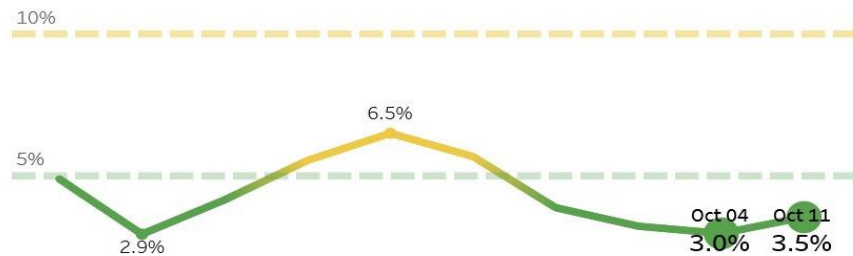
Showing data for **Pima County**
(Southeastern Region)

Recommended Delivery Model: **Hybrid**

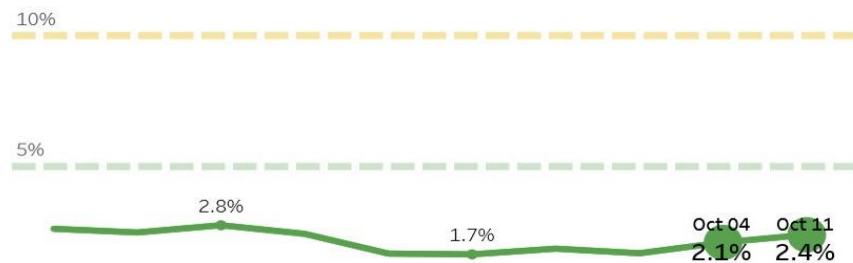
1) Cases per 100,000 individuals



2) Percent positivity



3) Hospital visits for COVID-like illnesses in the region



Updated COVID-19 GUIDANCE ON HOME ISOLATION

The Centers for Disease Control and Prevention (CDC), the Arizona Department of Health Services, and Tohono O'odham Nation Health Care updated guidance on home isolation. Accumulating evidence supports ending isolation and precautions for persons with COVID-19 using a symptom-based strategy. Researchers have reported that people with mild to moderate COVID-19 remain infectious no longer than 10 days after their symptoms began, and those with more severe illness or those who are severely immunocompromised remain infectious no longer than 20 days after their symptoms began. Therefore, CDC has updated the recommendations for discontinuing home isolation.

CDC guidance, <https://www.cdc.gov/coronavirus/2019-ncov/hcp/disposition-in-home-patients.html>, accessed 7/29/20.

If you tested positive for COVID-19, you need to stay in ISOLATION:

- If you tested positive for COVID-19 or are waiting for results, you should be in **isolation**. Isolation means you need to stay away from others as much as possible. You should stay in a specific “sick room,” if possible, and away from other people in your home.
- If you cannot separate from others at home, you should wear a mask.
- Do not attend work, school, be in public areas, or use public transportation.
- Do not share household items like dishes, cups, eating utensils, and bedding.
- Cover coughs and sneezes with a tissue or your elbow. Throw away used tissues in the trash and wash your hands.
- Avoid touching your eyes, nose, and mouth.
- Wash your hands often with soap and warm water for at least 20 seconds.
- Clean high-touch surfaces (tables, doorknobs, light switches, countertops, handles, desks, phones, keyboards, toilets, etc.) daily.
- Reschedule all non-essential medical appointments.
- If you need medical care, call your provider **before going**, and tell them about your illness.

The number of days you should isolate at home depends on your SYMPTOMS, how SICK you were, and whether you are SEVERELY IMMUNOCOMPROMISED.

Please **look at the chart on the back of this sheet** to help you figure out how long you should stay isolated at home.

- 1) If you **had any symptoms** consistent with COVID-19 **and** had **mild or moderate illness**, you should isolate at home until:
 - At least 10 days have passed since your symptoms first started **and**
 - At least 24 hours have passed since your fever resolved (without the use of medication) **and**
 - Your other symptoms have improved.
- 2) If you **had any symptoms** consistent with COVID-19 **and** had **severe or critical illness** **or** are **severely immunocompromised**, you should isolate at home until:
 - At least 20 days have passed since your symptoms first started **and**
 - At least 24 hours have passed since your fever resolved (without the use of medication) **and**
 - Your other symptoms have improved.
- 3) If you **did not have any symptoms** consistent with COVID-19, you should isolate at home until;
 - 10 days have passed since your first COVID-19 test was done.
- 4) If you **did not have any symptoms** consistent with COVID-19 **and** are **severely immunocompromised**, you should isolate at home until:
 - 20 days have passed since your first COVID-19 test was done.

Contact your healthcare provider or Public Health Nursing for any questions.

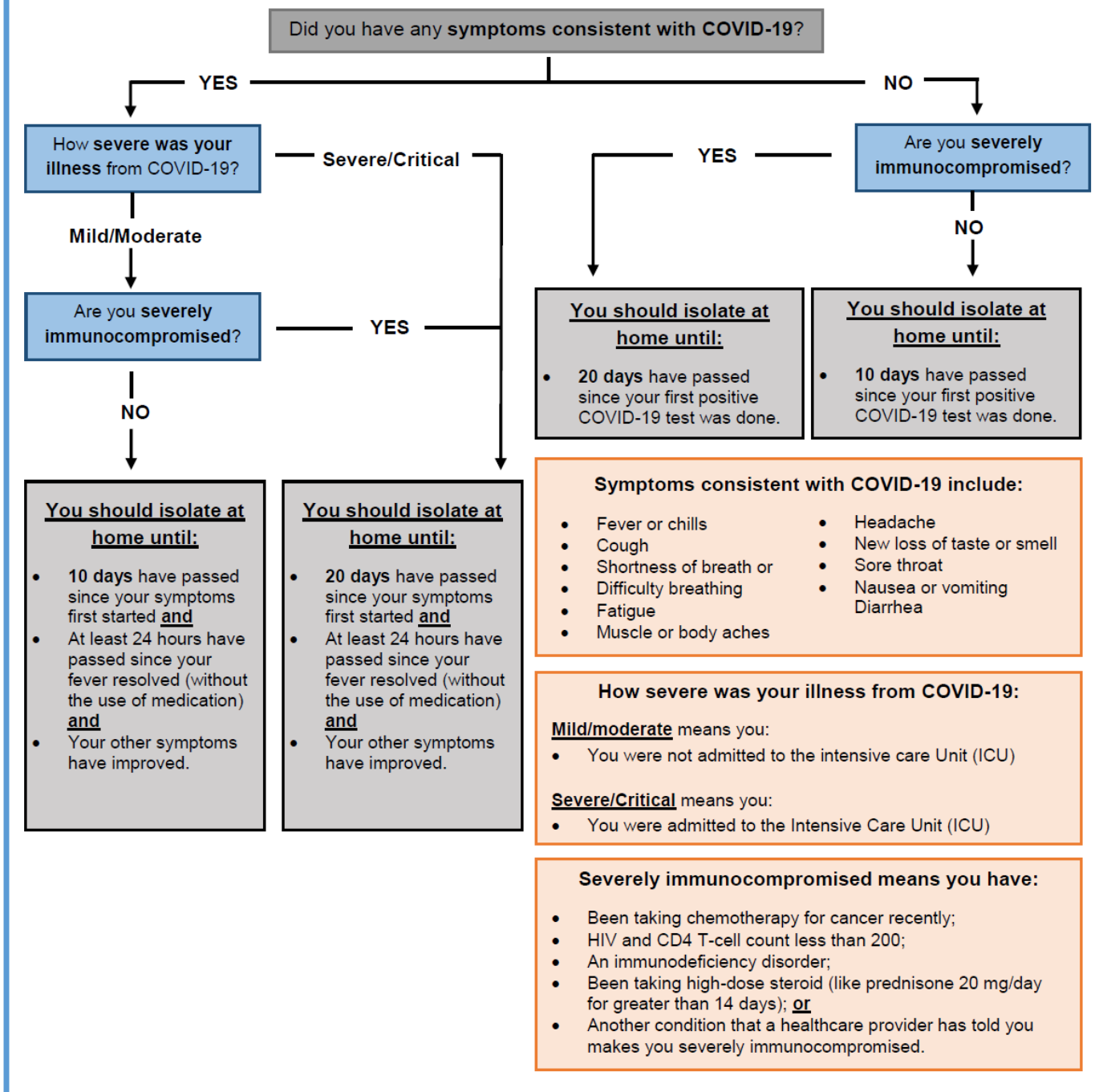
Guidance may change as new information becomes available. Please look for the most up-to-date recommendations.

TOHONO O'ODHAM NATION HEALTH CARE

Updated 7/27/2020 (subject to change)



How long should I isolate at home if I **tested positive** for COVID-19?



Guidance may change as new information becomes available. Please look for the most up-to-date recommendations.

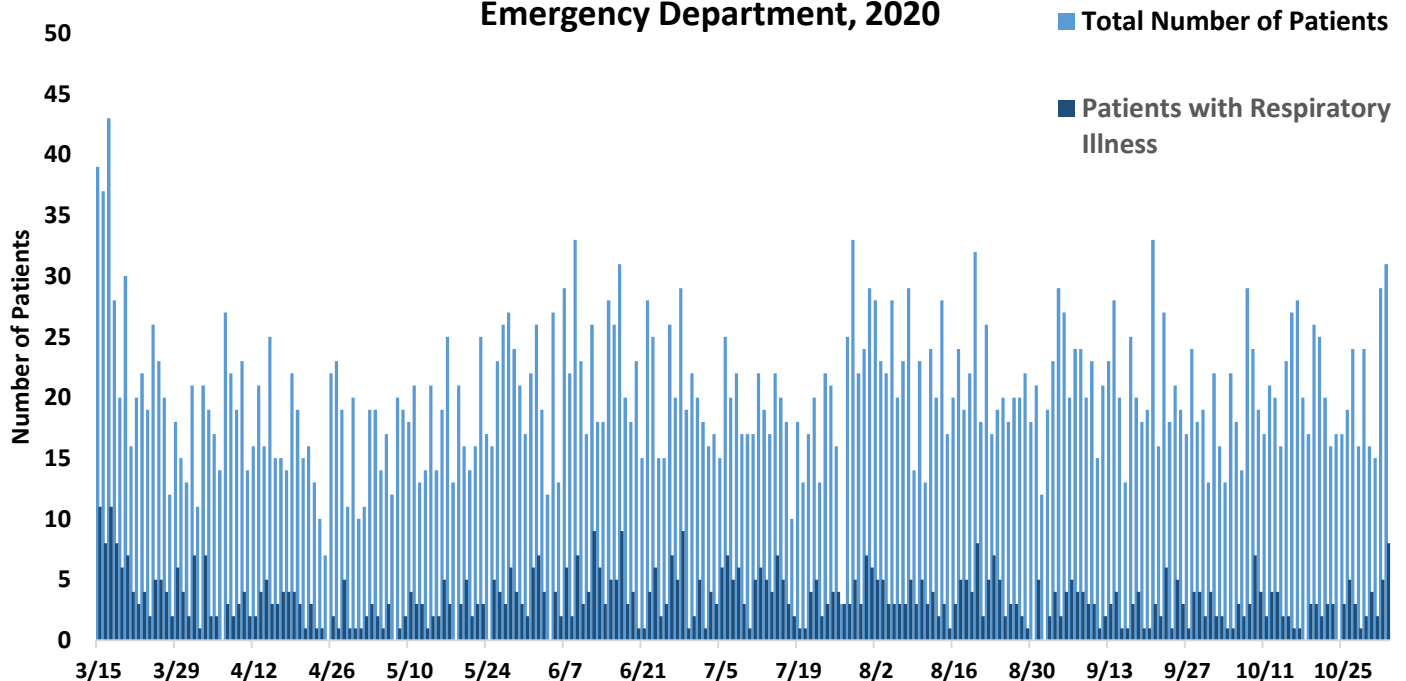
TOHONO O'ODHAM NATION HEALTH CARE

Updated 7/27/2020 (subject to change)



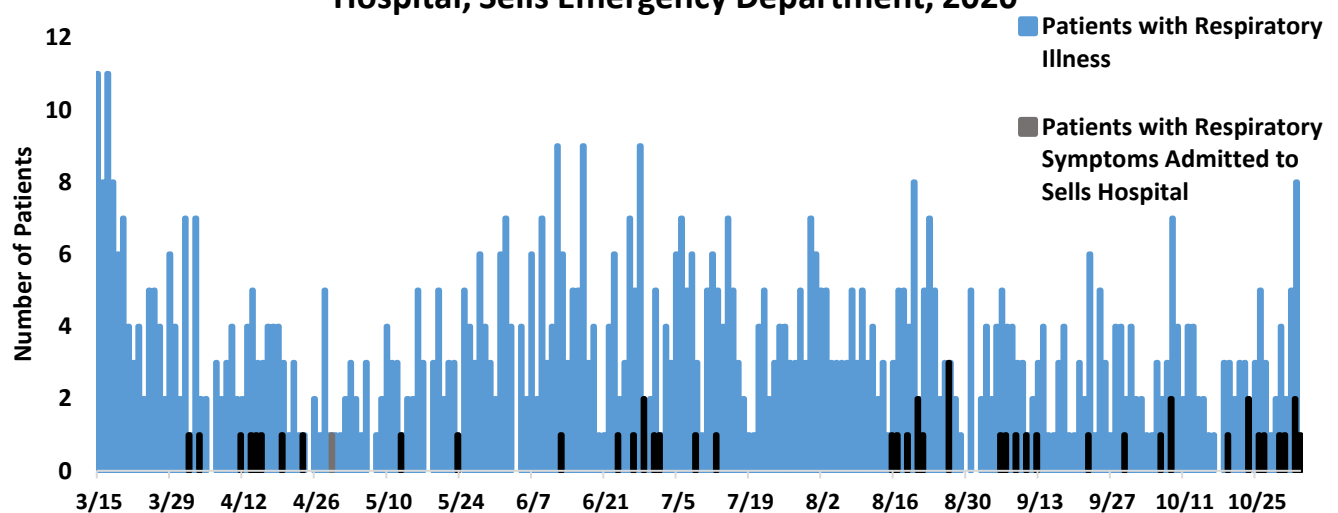
Sells Emergency Department Syndromic Surveillance

**Patients Presenting with Respiratory Illness and Daily Totals, Sells
Emergency Department, 2020**



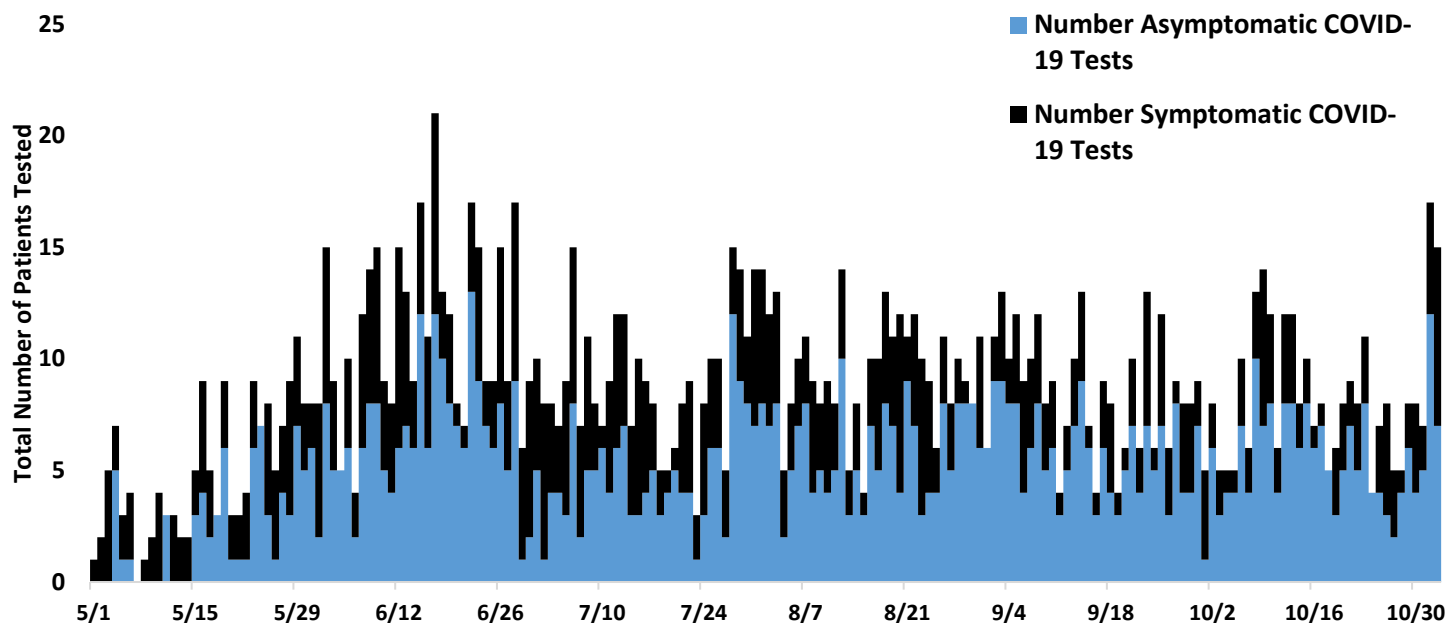
Syndromic surveillance refers to detection of indicators that are discernible before confirmed diagnoses are made. For example, an increase in the number of patients seen with respiratory symptoms could be an indicator of COVID-19. There were between 1 and 5 patients seen daily in Sells Emergency Department with respiratory symptoms during the week of 10/26/20–11/1/20. Same-day COVID-19 testing began on 4/20/20. From 10/26/20–11/1/20, between 15 and 29 patients were seen each day in the emergency department.

**Patients Presenting with Respiratory Illness and Number of Patients
Transferred/Admitted from Emergency Department to Inpatient
Hospital, Sells Emergency Department, 2020**



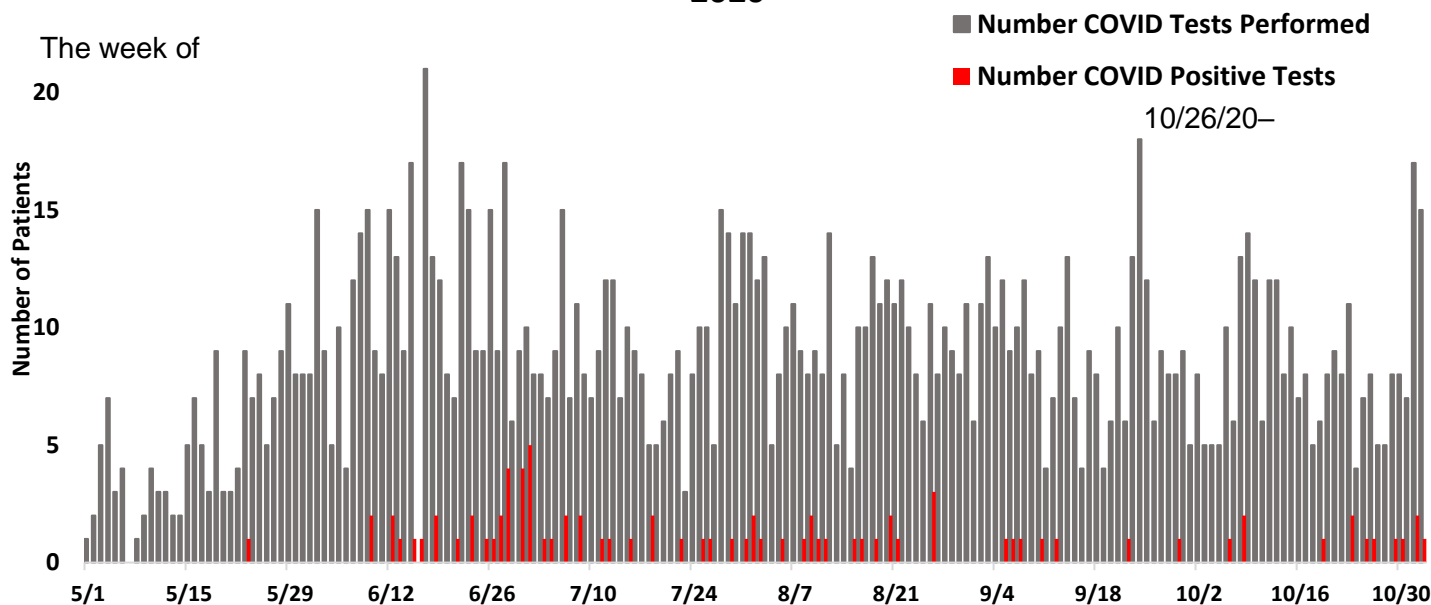
As of 11/4/2020, there was 1 admission to Sells Hospital and 48 outside transfers for respiratory symptoms from Sells Emergency Department. The number of patients transferred from the emergency department to hospital inpatient units helps to identify severity of disease among the population. This is a level of disease severity that requires a higher level of care, such that care must be managed in the hospital (e.g. with oxygen, mechanical ventilation, etc.).

Patients Tested for COVID-19, Sells Emergency Department, 2020



Asymptomatic tests are performed on people who have no symptoms (no cough, no diarrhea, no fever, etc.). Symptomatic tests refer to tests performed on people who have symptoms (cough, fever, diarrhea, etc.) of COVID-19.

Results of Patients Tested for COVID-19, Sells Emergency Department, 2020



TONHC Situation Update 11/4/2020 7:00

Wear a mask, physically distance, and wash your hands to protect Tohono O'odham Nation

11/1/20, 5 people seen in the emergency department tested positive for COVID-19. There have been 78 total positive test results from tests performed in Sells emergency department

EMPLOYEE HEALTH

326 TONHC employees (441 encounters) have been evaluated by employee health for respiratory symptoms related to illness or other reasons (as of 7:00 11/4/2020).

14 TONHC employees are currently sick including 7% of TONHC nurses and 0% of medical providers (as of 7:00 11/4/2020).

16 employees tested positive for COVID-19. There has been no known employee-to-employee transmissions or patient-to-employee transmissions at TONHC. Each positive result has prompted an internal and external investigation and contact tracing. Based on these investigations, transmissions were more likely due to community spread. Employees possibly exposed are tested for COVID-19.

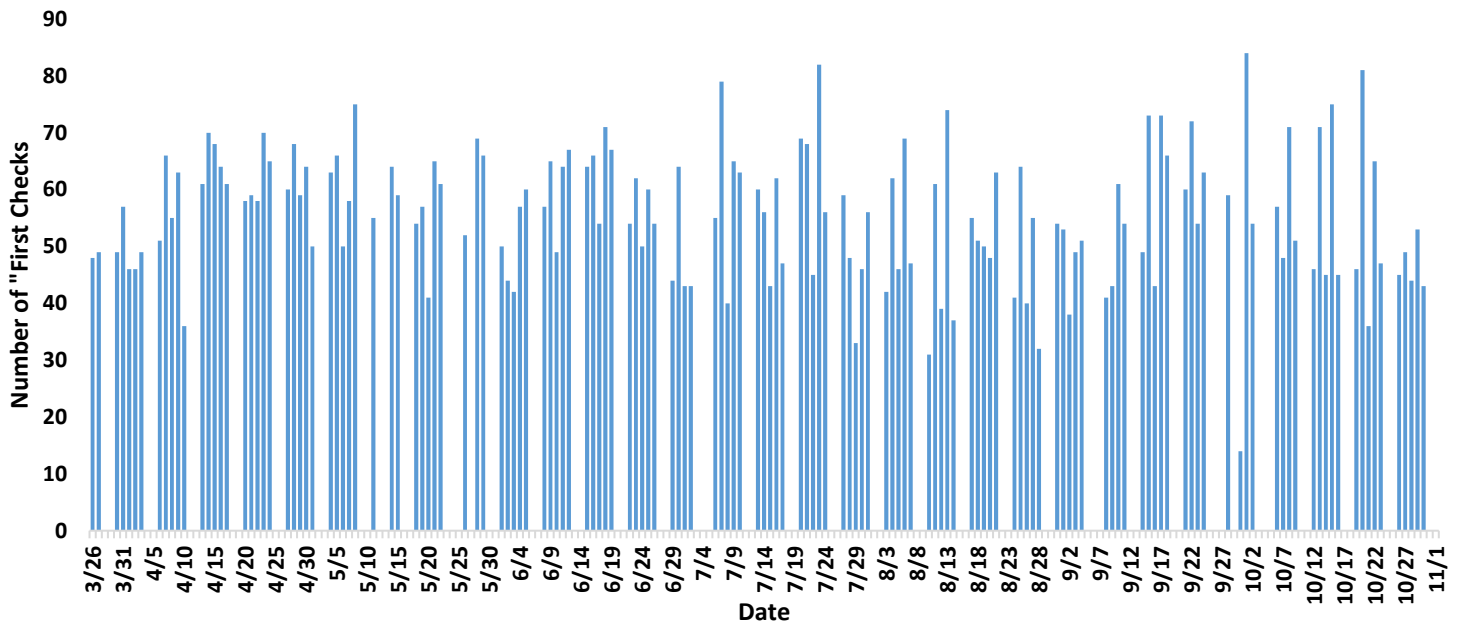
All employees are required to contact Employee Health with any call-outs. This is to ensure that employees are tested for COVID-19 if sick or exposed and given appropriate guidance on when to return to work. Employees are also required to contact their supervisor when they call out.

TONHC Infection Control

Infection control prevents or stops the spread of infections in healthcare settings. TONHC COVID-19 infection control team monitors, tracks, and provides guidance on personal protective equipment (PPE such as gowns, gloves, face shields, N95 respirators).

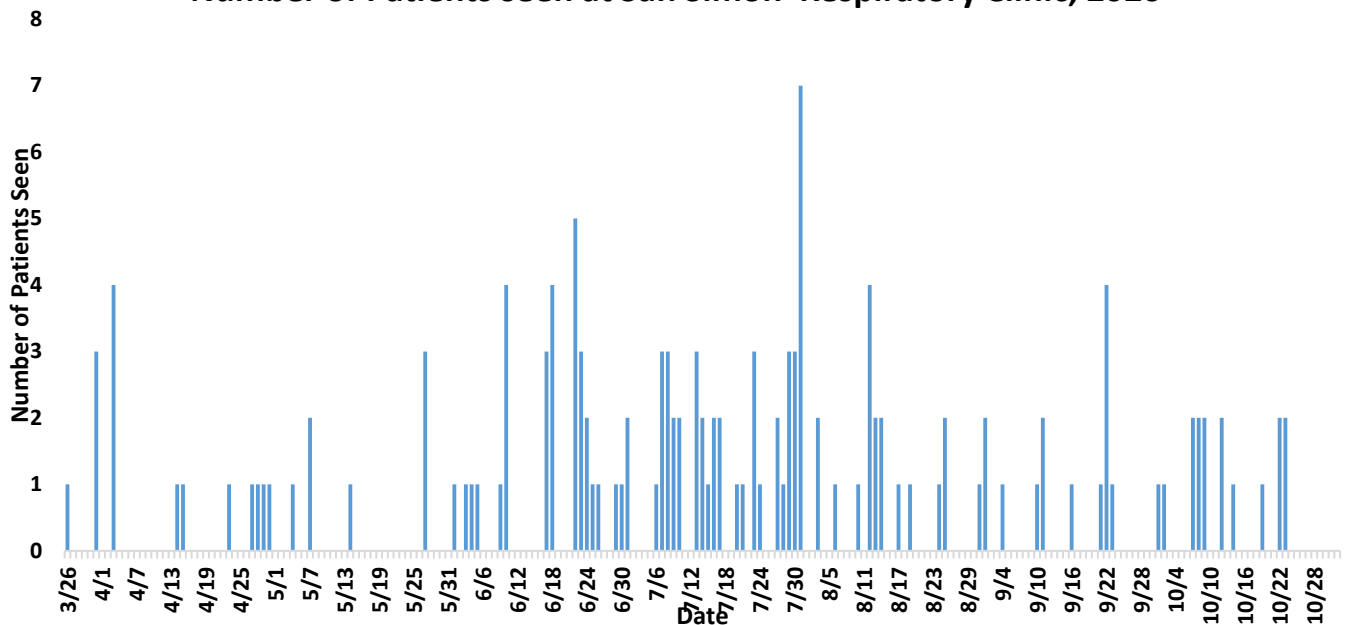
- At the San Xavier, Sells, and San Simon Health Care Centers, the Battelle CCDS Critical Care Decontamination System™ is being used to decontaminate N95 respirators using concentrated, vapor phase hydrogen peroxide (Emergency Use Authorization (EUA) issued by US Food and Drug Administration (FDA)).
- All staff are wearing procedure/surgical masks, and staff caring for patients are also wearing eye protection.
- Staff caring for patients that have or may have been exposed to COVID-19 are wearing gowns, gloves, face shields or other eye protection, and N95 respirators or Powered Air Purifying Respirators (PAPRs).

Number of "First Checks" at San Simon Clinic, 2020



A "first check" is asking questions about loss of smell or taste, sore throat, fever, cough, and/or difficulty breathing when anyone is entering the clinic or hospital grounds. First checks include employees and patients. As first checks are with entry, they occur multiple times per day for some people. The number of first checks is the number of times questions of respiratory symptoms were asked.

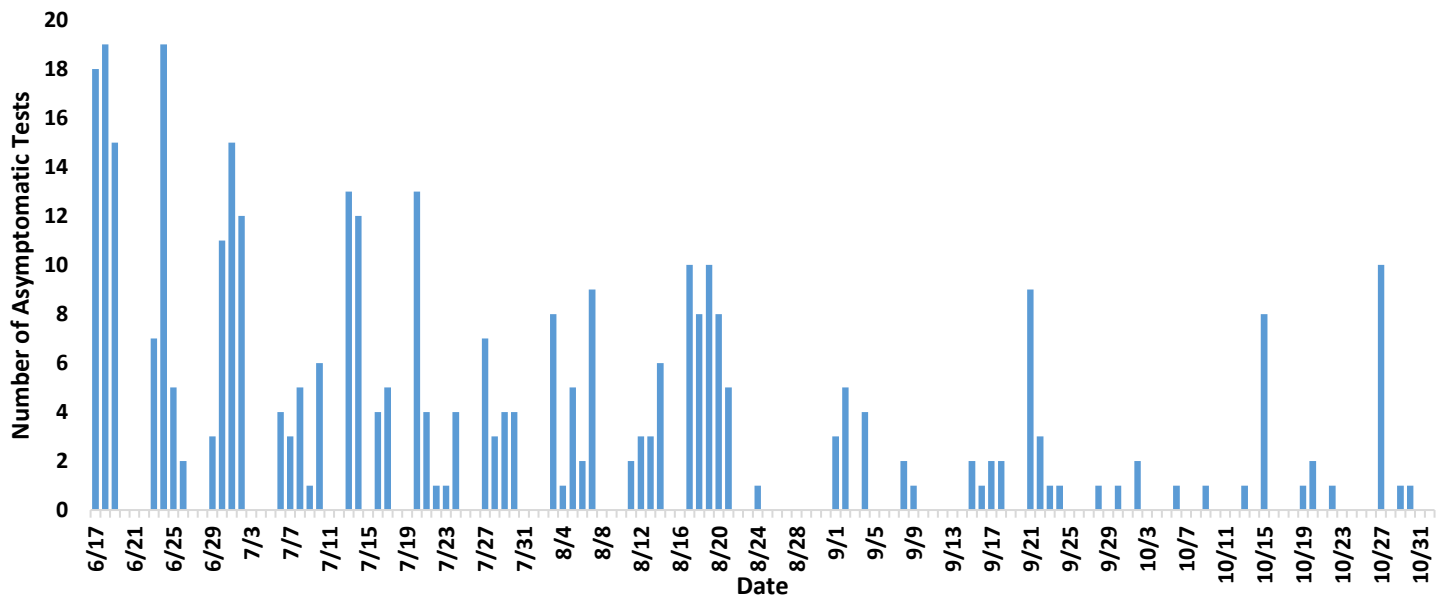
Number of Patients seen at San Simon Respiratory Clinic, 2020



Some data are missing the month of August 2020 and October 2020

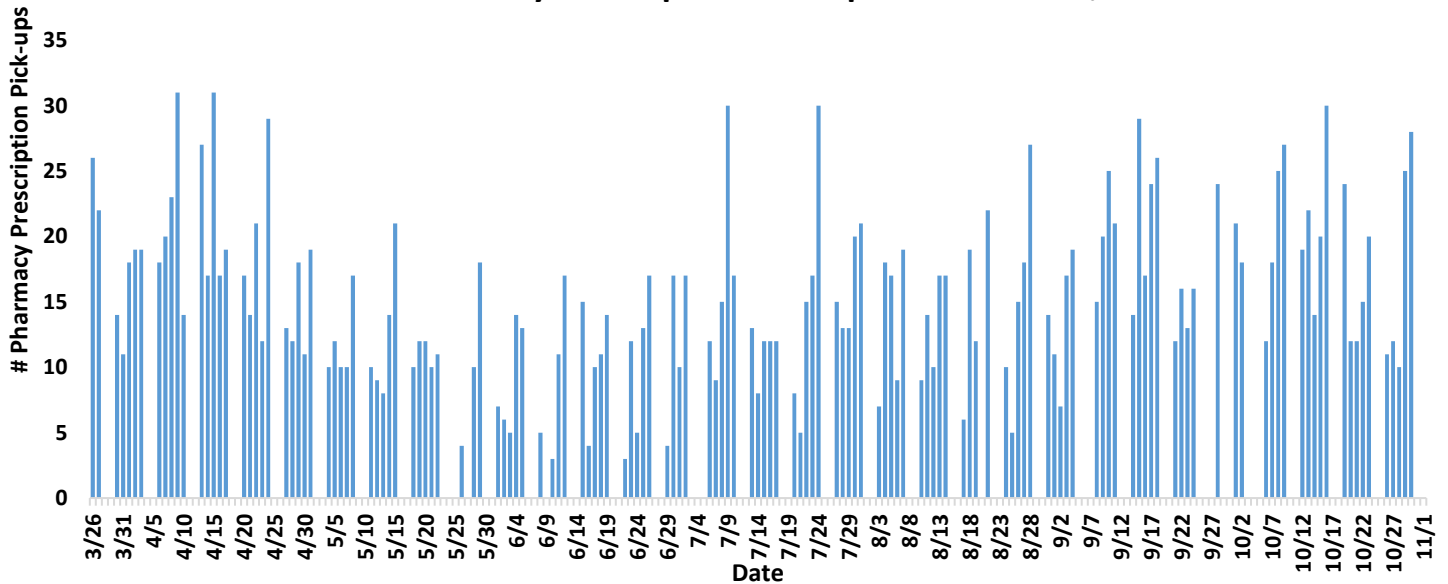
Two patients from San Simon Clinic were admitted to the hospital for respiratory symptoms.

Number of COVID-19 Asymptomatic Tests Performed at San Simon, 2020



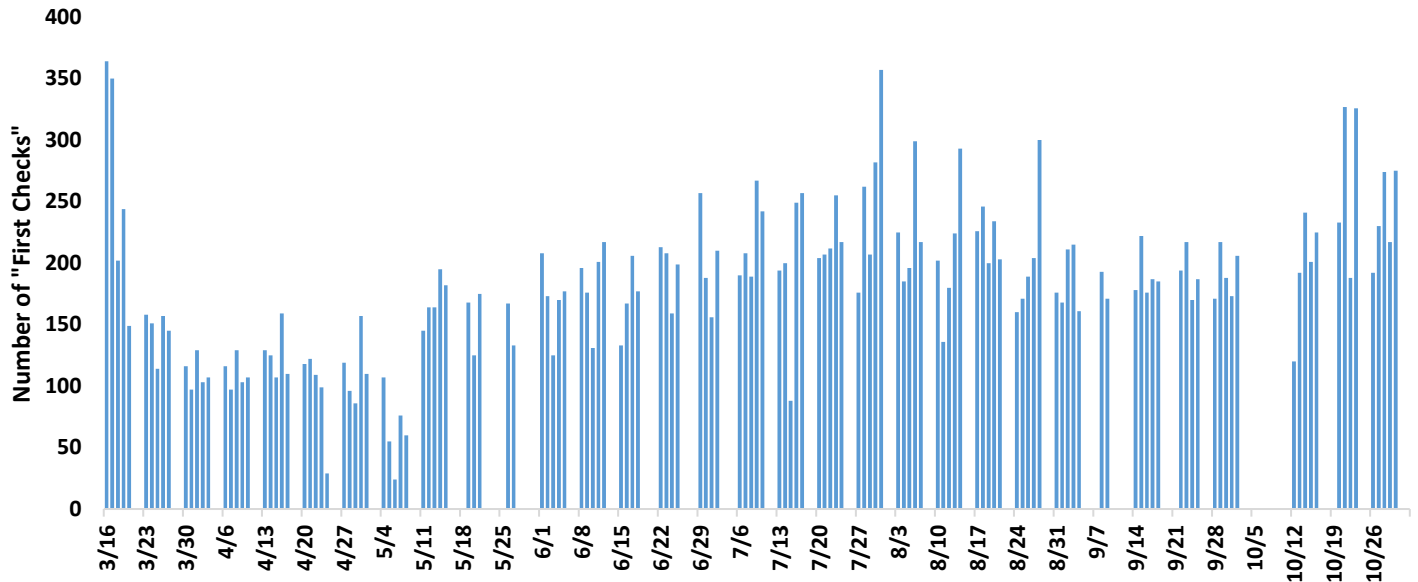
These are the number of tests for COVID-19 performed on patients that have no symptoms of COVID-19 (no fever, no cough, no difficulty breathing, etc.). They are performed on people who may have had exposure to COVID-19, are entering a congregate setting, or are going to be admitted to the hospital.

Number of Pharmacy Prescription Pick-ups at San Simon, 2020



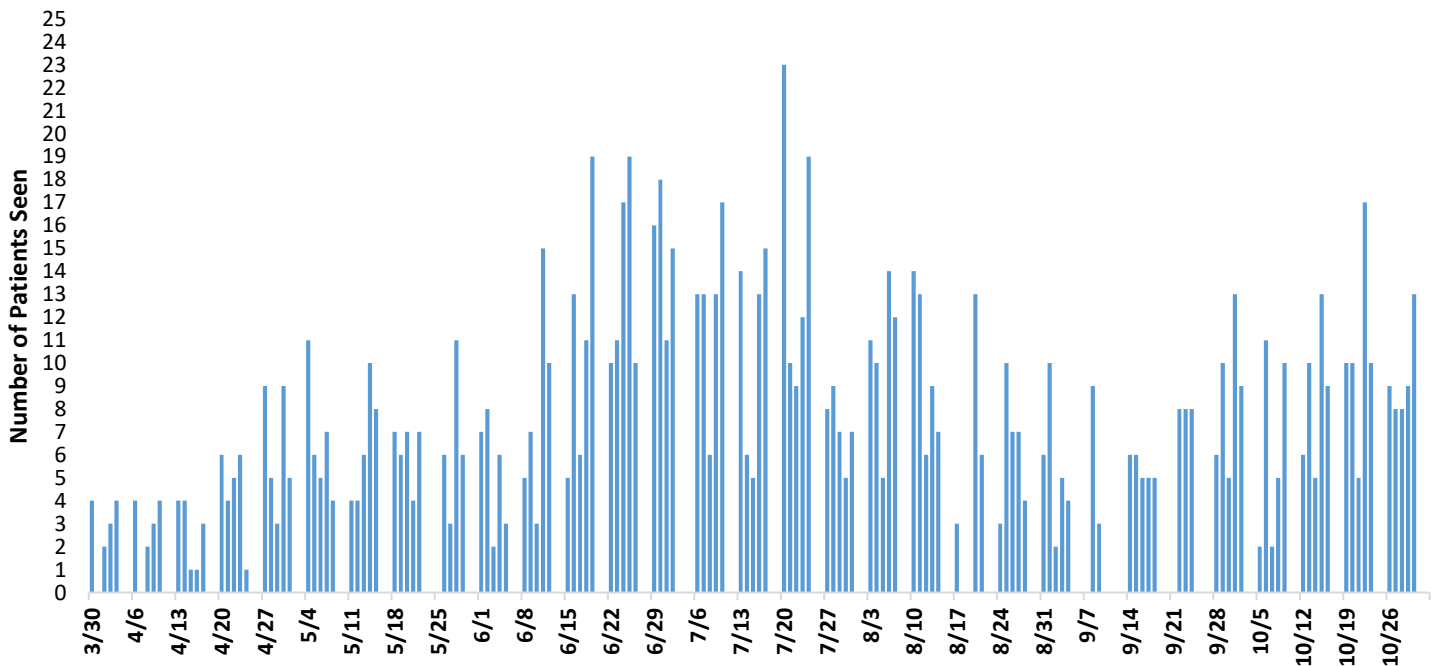
CLINIC – SAN XAVIER

Number of "First Checks" at San Xavier Clinic, 2020



Some data are missing the month October 2020

Number of Patients seen at San Xavier Respiratory Clinic, 2020



Some data are missing the month September 2020

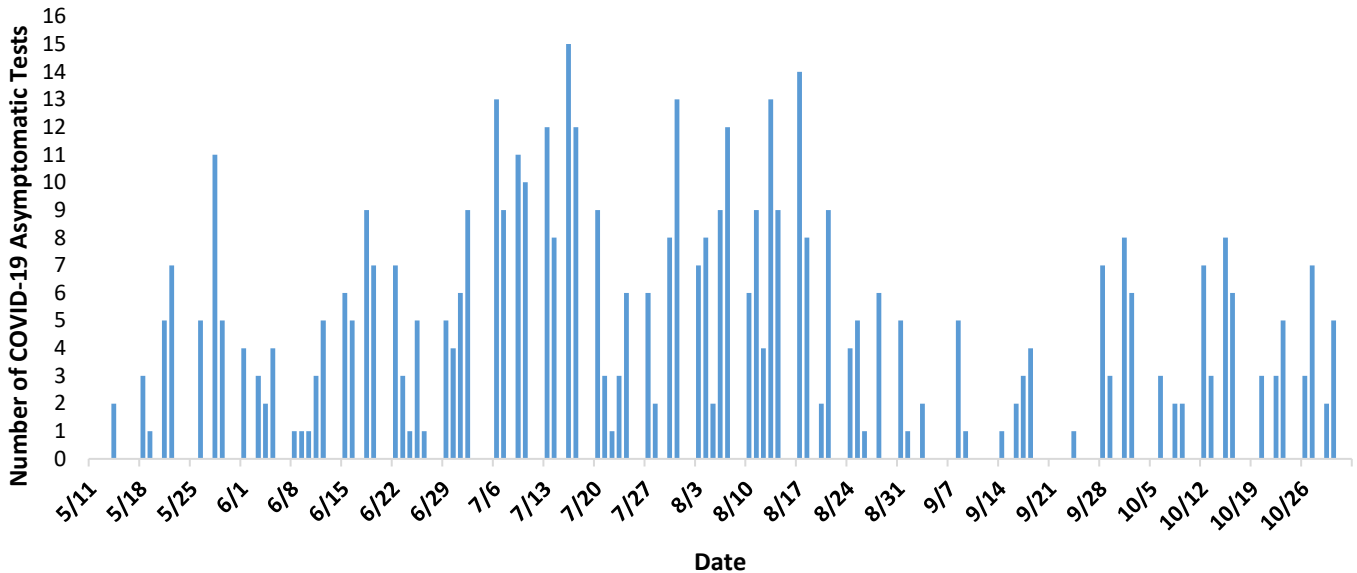
16 patients were seen in the same day respiratory clinic and transported to the hospital from San Xavier clinic.

Some data are missing the month of August and September, 2020

TONHC Situation Update 11/4/2020 7:00

Wear a mask, physically distance, and wash your hands to protect Tohono O'odham Nation

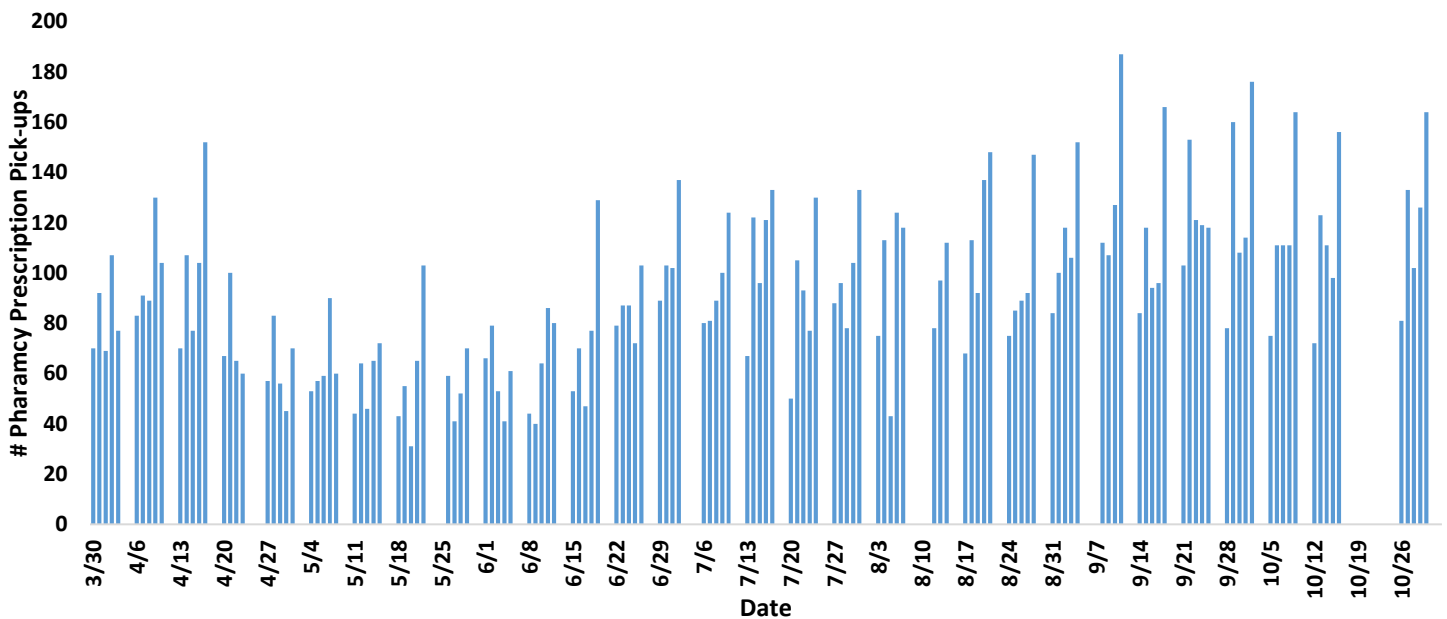
Number of Asymptomatic COVID-19 Tests Performed at San Xavier Respiratory Clinic, 2020



Some data are missing the month of September, 2020

These are the number of tests for COVID-19 performed on patients that have no symptoms of COVID-19 (no fever, no cough, no difficulty breathing, etc.). They are performed on people who may have had exposure to COVID-19, are entering a congregate setting, or are going to be admitted to the hospital.

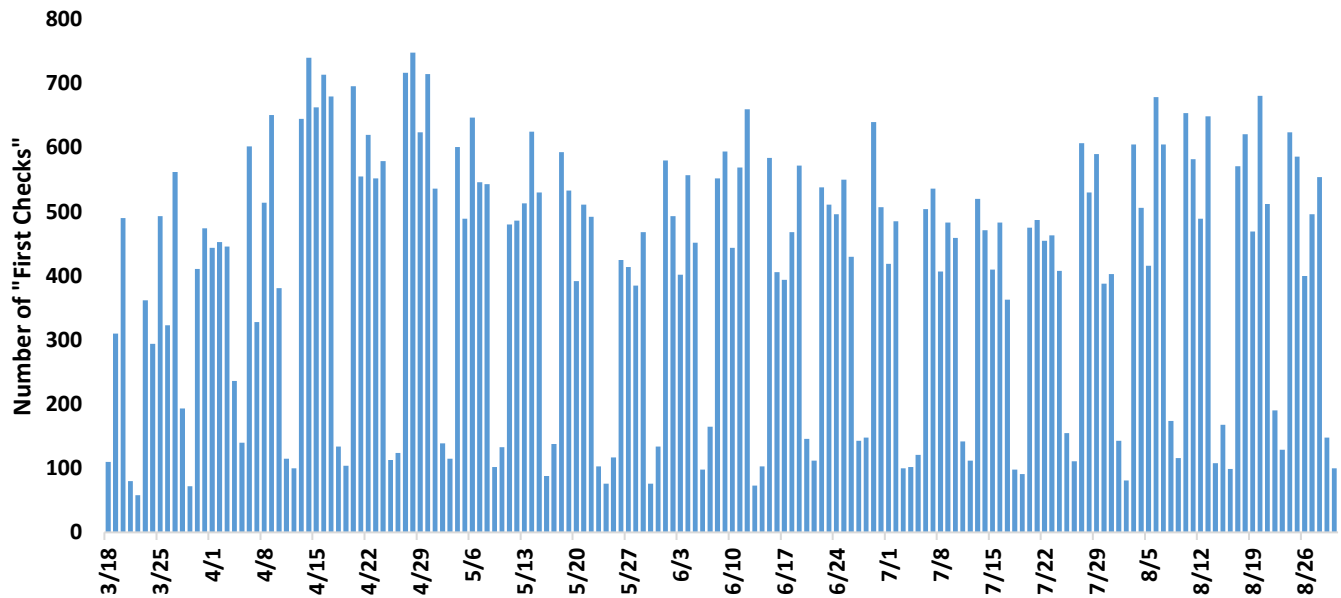
San Xavier Clinic Number of Pharmacy Prescription Pick-ups, 2020



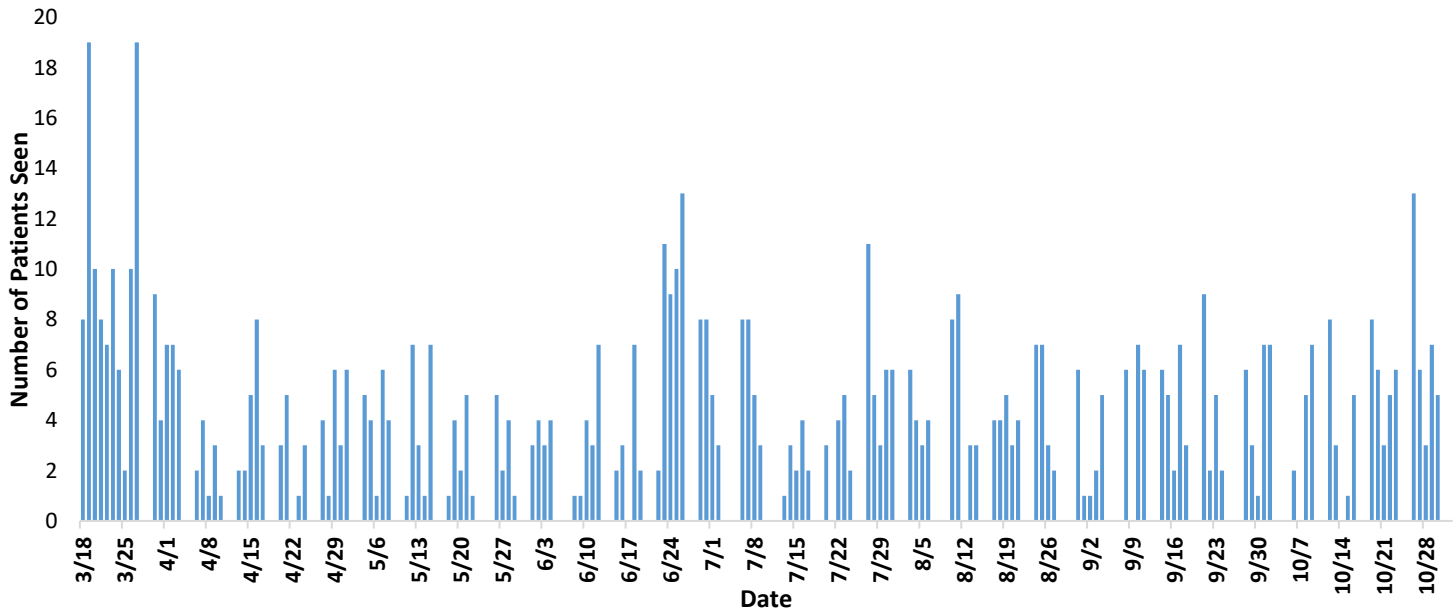
Some data are missing the month of October 2020

CLINIC – SELLS

Number of "First Checks" at Sells Clinic, 2020

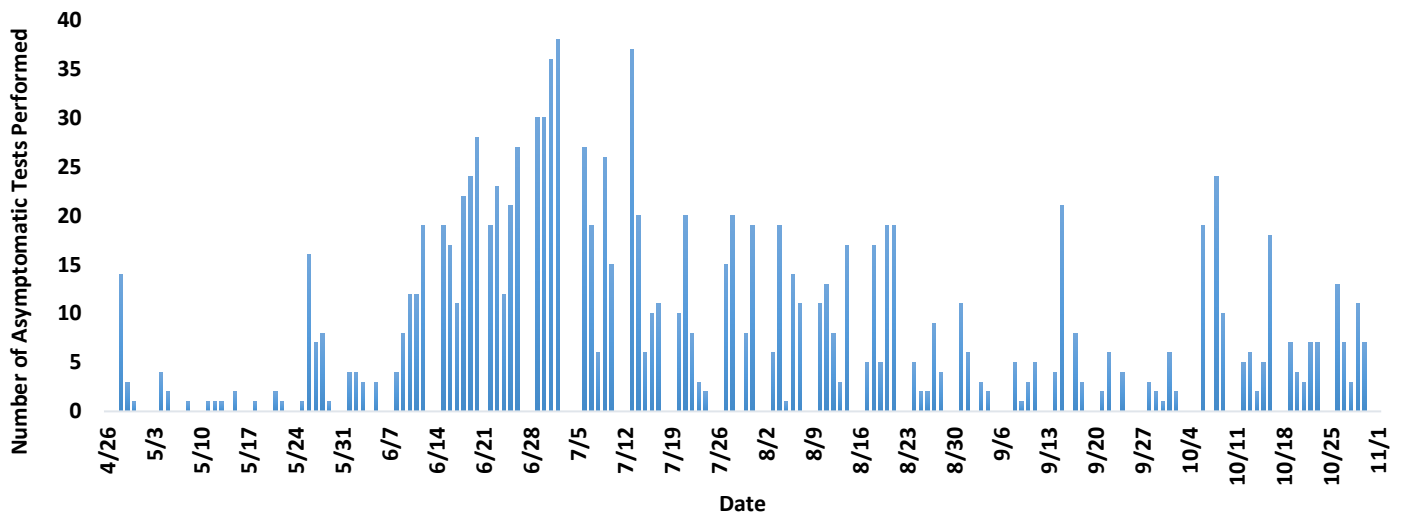


Number of Patients seen at Sells Respiratory Clinic, 2020



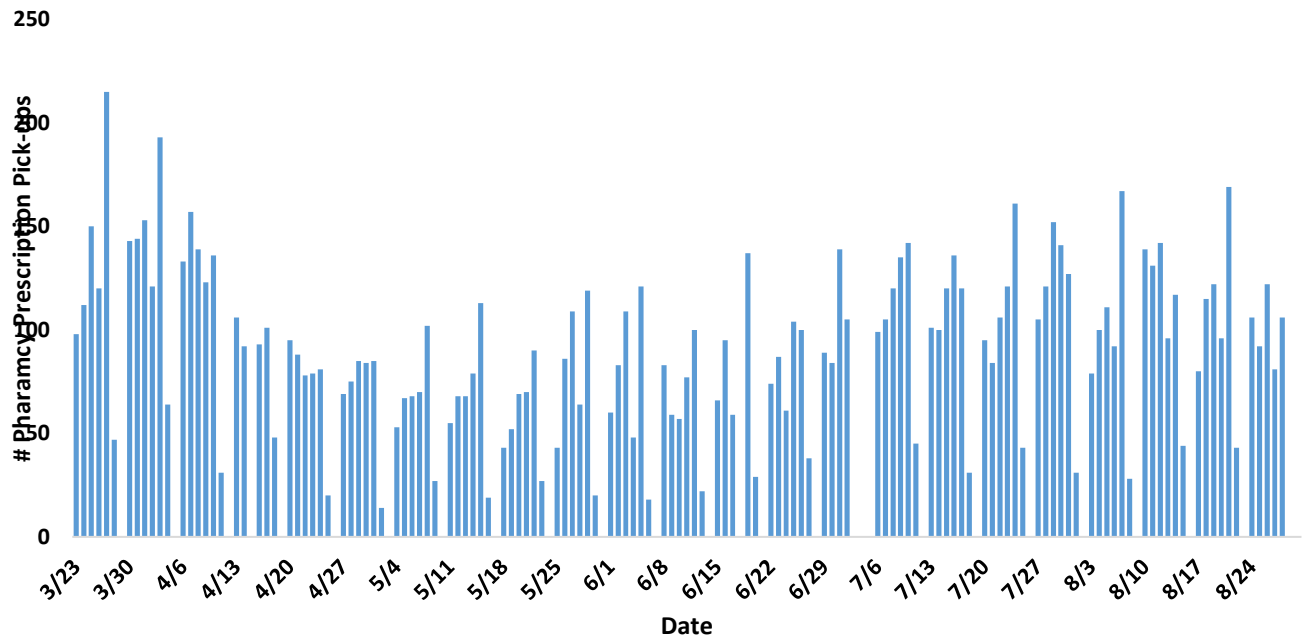
15 patients seen were transferred to the emergency room, 5 patients were directly admitted to the hospital. 3/21/20 and 3/22/20 included patients seen in the emergency department.

Number of Asymptomatic COVID-19 Tests Performed at Sells Clinic, 2020



These are the number of tests for COVID-19 performed on patients that have no symptoms of COVID-19 (no fever, no cough, no difficulty breathing, etc.). They are performed on people who have had exposure to COVID-19, are entering a congregate setting, or are going to be admitted to the hospital.

Sells Clinic and Hospital Number of Pharmacy Prescription Pick-ups, 2020



Some data are missing the months August, September, and October 2020

SELLS INPATIENT UNIT

To minimize possible exposure and conserve personal protective equipment, visitors are not allowed on the inpatient wards. Exceptions are for a minor, woman in labor, and special circumstances. In accordance with state enhanced surveillance advisory related to COVID-19, daily information has been reported to Arizona State using EMResource.

1 patient was admitted to Sells Hospital who tested positive for COVID-19. Inpatient, in-hospital transportation, and postmortem protocols have been developed. Every patient admitted to the inpatient unit of Sells hospital is tested for COVID-19.

Med/Surge Bed Availability – 11 (11/4/20)

Med/Surge Bed Capacity – 12, with 7 additional beds available if needed for emergency situations

No intensive care unit services

Negative Pressure Rooms – 2 inpatient rooms, 1 in emergency department (inpatient rooms are used by emergency department or other clinics when indicated).

For all transfers outside of TONHC we are calling the Arizona Surge Line. The Arizona Surge Line is a 24/7 toll-free statewide system activated 4/22/20 to keep hospitals and regions of Arizona from being overwhelmed by facilitating COVID-19 patient admission, transfer, and discharge to appropriate levels of care.

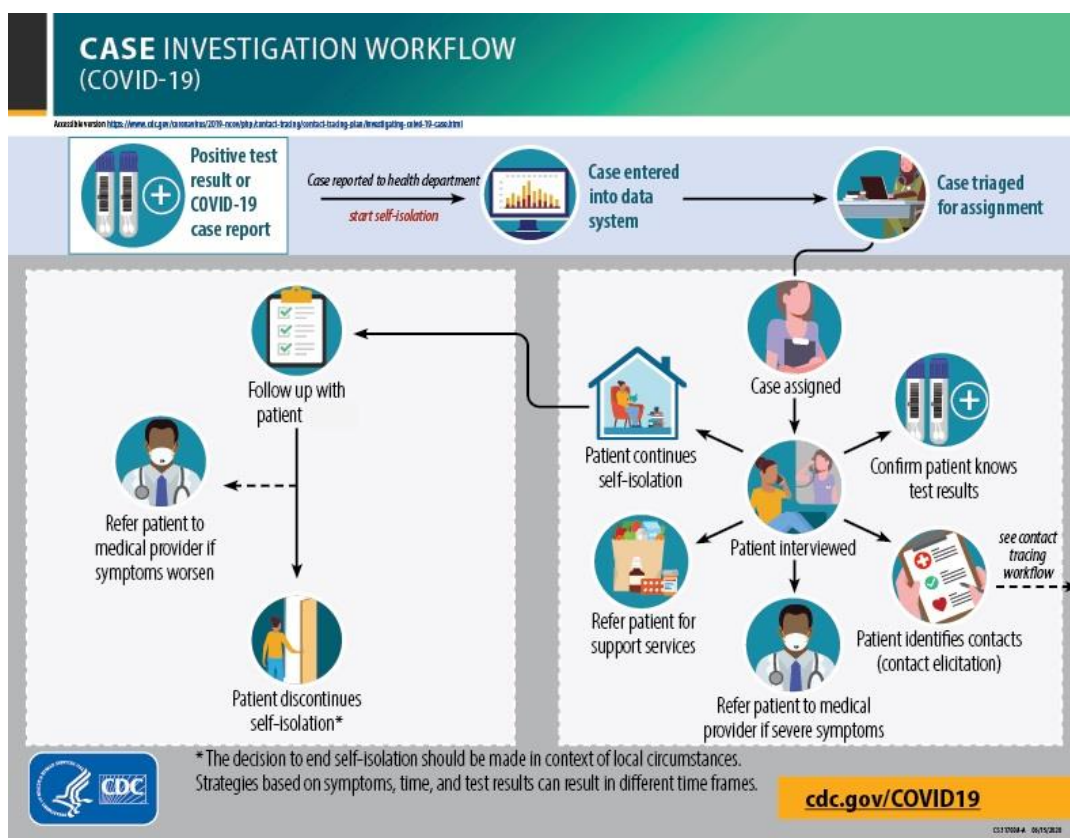
In preparation, our outpatient clinic staff has been cross-trained in inpatient patient care. To date we have trained 16 member of the healthcare workforce to manage patients in the hospital setting. Cross-training will allow us to increase the number of patients we can take care of on the inpatient unit. Please note that Sells hospital is not an intensive care unit, so we cannot take care of patients with COVID-19 requiring intensive respiratory treatment. These patients would be transferred to intensive care units at other sites.

From 7/20/20 to 7/30/20 a critical care response team (CCRT) composed of doctors and nurses with critical/intensive care training arrived at TONHC to provide training in COVID-19 response care and ventilator management. As of 7/28/2020, 56 TONHC employees have been trained on ventilators and ventilator management. Visit evaluation was completed on 8/3/2020.

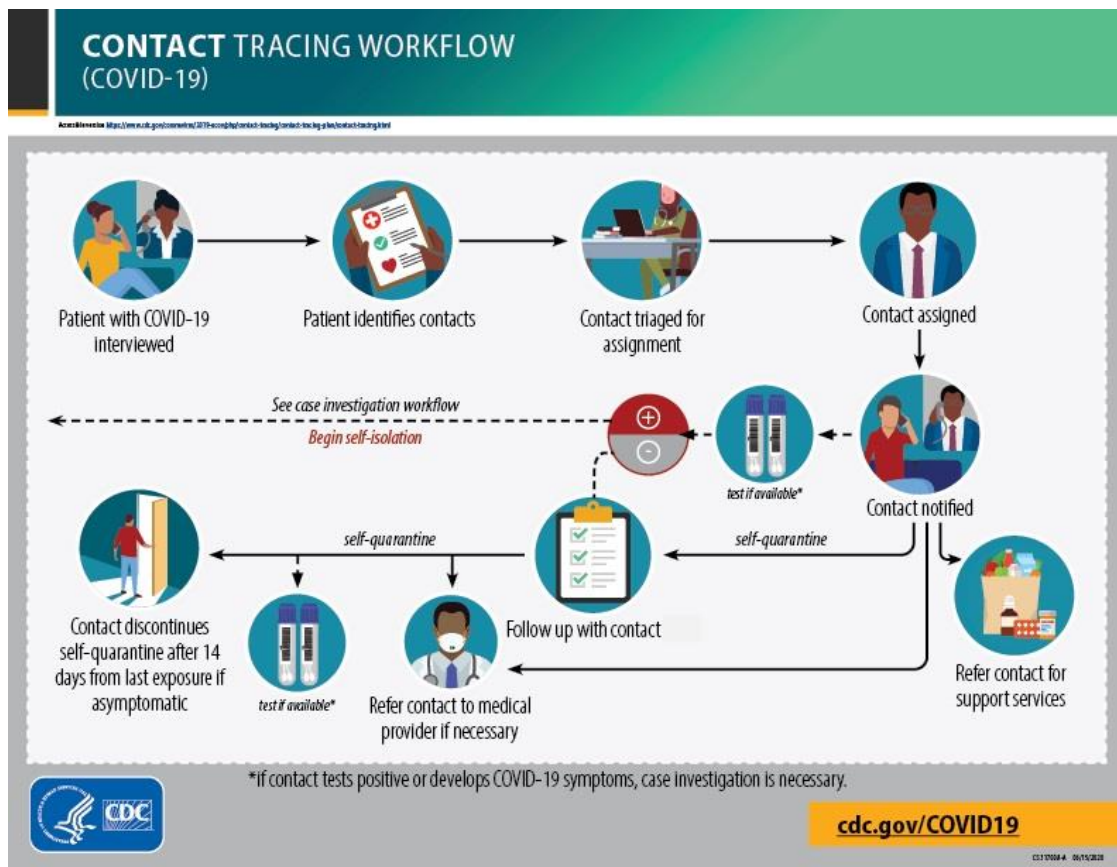
PUBLIC HEALTH NURSING – CONTACT TRACING

As of 11/4/20 at 7:00, 1,585 individual contact tracings have occurred in the Tohono O'odham Nation.

TONHC public health nursing conducts case investigation and contact tracing (involves interviewing). Case investigations are initiated on everyone who tests positive for COVID-19.



Contact tracing, a core disease control measure, is a key strategy for preventing further spread of COVID-19. Contact tracing is part of the process of supporting patients with suspected or confirmed infection. In contact tracing, public health nursing works with patients to help them recall everyone with whom they have had close contact during the timeframe in which they may have been infectious. To protect patient privacy, contacts are only informed that they may have been exposed to a patient with the infection. They are not told the identity of the patient who may have exposed them. Contacts are provided with education, information, and support to understand their risk, what they should do to separate themselves from others who are not exposed, how to monitor themselves for illness, and the possibility that they could spread the infection to others even if they themselves do not feel ill.



Executive Order No. 2020-08 (7/2/20):

WHEREAS, COVID-19 cases continue to rise at an alarming rate in the state of Arizona, and surrounding hospitals, which the Nation rely on, are reaching maximum capacity. The Nation is also seeing an increased number of cases linked to community spread, which has put the health and safety of Nation's members at heightened risk. Due to the increased threat to the health and safety of Nation's members the Chairman, in consultation with Tohono O'odham Health Care COVID-19 Medical Team, has determined that Stay at Home orders must be reinstated.

NOW, THEREFORE BE IT RESOLVED, by the authority vested in the Chairman of the Nation, the Chairman restates the following orders, as amended:

1. The Human Resources *Return to Work – Standard Operating Procedures*, and any subsequent revisions, adopted by Executive Order No. 2020-05, remain in effect; all Executive Branch departments and programs must adhere to the minimum requirements set forth therein. Employees who fail to report to work when assigned are subject to disciplinary action under the Executive Branch Personnel Policies Manual; and
2. The Tohono O'odham Nation Unified Command *Guidelines: Wakes/Funerals*, and any subsequent revisions, adopted by Executive Order No. 2020-05, remain the minimum standards for all wakes and funeral held on the Nation until further notice. In addition:
 - a. Individuals in charge of/hosting wakes/funerals, or their designees, are responsible for ensuring all attendees comply with all social distancing and face covering requirements within this order, and as recommended by CDC.
 - b. All wakes and funerals held on the Nation shall be limited to one-day services only.
 - c. If necessary, district leadership is to implement additional standards; and

3. The Curfew for all Nation's residents, reinstated by Executive Order No. 2020-06, remains in effect until further notice. During the Curfew hours (9pm and 6am) residents shall remain home unless one of the following exceptions applies:
 - a. Individuals working at a business in operation during the curfew hours, or traveling to or from work;
 - b. Individuals patronizing or operating a business;
 - c. Individuals seeking medical care, or traveling to or from those services;
 - d. Individuals traveling to provide necessary care for another who cannot care for themselves; or
 - e. Individuals seeking safe harbor from a dangerous situation.
4. All playgrounds and sports areas, such as football fields, basketball courts, etc., shall remain closed until further notice, as order by Executive Order No. 2020-06; and
5. The following social distancing requirements, as order by Executive Order No. 2020-07, shall remain in effect, as amended here:
 - a. When leaving the home, physically distance yourself from others who do not reside in your household by maintaining a 6ft distance from others, when possible.
 - b. With the exception of persons residing in the same household, all social gatherings are hereby *prohibited* until further notice. "Social gatherings" shall include all events and activities held for social and/or community purposes. Religious services and traditional ceremonies are not considered social gatherings, however, any activities held in association with a religious services or ceremony for social purposes (i.e. gathering before/after for eating, drinking, dancing, socializing, etc.) are prohibited.
 - c. Individuals are *required* to wear face coverings in all public spaces where physical distancing is not possible.
 - i. "Public Spaces" means any place that is accessible by the general public (indoor and outdoor), including but not limited to: all governmental facilities, grocery stores, gas stations, convenience stores, post offices, establishments serving food or beverages, establishments offering recreational activities or entertainment and places that offer medical or health services or transportation to the general public.
 - ii. "Face masks or coverings" means cloth, fabric or other soft material that covers the nose and mouth. Coverings may be homemade or factory-made, or may be improvised from ordinary materials such as a scarf or bandana.
 - iii. *Limited Exceptions.* Face coverings are not required for children under the age of two (2), in accordance with CDC guidelines; individuals who should not wear face coverings due to medical conditions, mental health conditions, or developmental disabilities; or first responders where face covering would interfere with their duties.
 - d. Individuals should wash hands and/or use hand sanitizer regularly, avoid touching their face, and disinfect frequently touched surfaces regularly.
 - e. Individuals are discouraged from unnecessary travel.
 - f. Individuals who become ill and demonstrate signs and symptoms related to COVID-19 should remain out of the public, however, are encouraged to seek treatment and testing.
6. Tribal enterprises and businesses, operating within the exterior boundaries of the Nation, are required to implement guidelines consistent with CDC Guidelines to protect the health and safety of employees and the general public, including requiring face coverings for employees and customers/visitors at all times in public spaces, (as amended by Executive Order No. 2020-06).

BE IT FURTHER RESOLVED, by the authority vested in the Chairman of the Nation, the Chairman hereby reinstates Stay At Home orders within the exterior boundaries of the Nation, effective immediately:

Individuals residing on the Nation:

1. All individuals who reside on the Nation are ordered to stay at home or at their place of residence, except as needed for employment, medical, health, safety, and food for themselves or their family members.
2. This section does not apply to employees or volunteers for essential services and businesses in operation that have been determined by the Nation, Districts, and entities on the Nation.

Entering the Tohono O'odham Nation:

1. Individuals and businesses are not allowed to enter the exterior boundaries of the Tohono O'odham Nation, except for:
 - a. Employees and volunteers of essential services on the Nation
 - b. Medical and healthcare providers
 - c. Deliveries of medicine, food, and other essential items
 - d. Public and private transportation services necessary for the health and safety needs of the individuals on the Nation
 - e. Mail services
 - f. Financial services
 - g. To patronize a business in operation
 - h. Businesses that provide maintenance services that are necessary to maintain the health and safety of the households or buildings on the Nation
 - i. Other necessary professional services as needed
2. Businesses and others entering districts for the purpose of providing services or delivering supplies must provide notice to Districts before entering.

BE IT FINALLY RESOLVED, that the Chairman of the Nation strongly urge religious leaders of every denomination practicing within the exterior boundaries of the Nation to suspend in-person services, and instead find other ways to spread their messages in a safe manner during this health pandemic. Mask requirements remain applicable to all religious services, in accordance with order. Additionally, all CDC Guidelines should be adhered to, including by not limited to social distancing, hand washing or hand sanitizing stations readily available, frequent disinfecting of facilities/communal spaces, etc.

ORDERED this 2nd Day of July, 2020 in Sells, Arizona.

APPENDIX

Confirmed COVID-19 Cases and Absolute Change among Enrolled Tohono O'odham Nation Members by Week, 2020

Week (2020)	Cumulative COVID-19 Cases Among Enrolled Tohono O'odham Tribal Members	Absolute Change ^s in Cumulative Case Counts from Previous Week
June 24 th – June 30 th	189	
July 1 st – July 7 th	241	52
July 8 th – July 14 th	297	56
July 15 th – July 21 st	320	23
July 22 nd – July 28 th	363	43
July 29 th – August 4 th	415	52
August 5 th – August 11 th	456	41
August 12 th – August 18 th	486	30
August 19 th – August 25 th	498	12
August 26 th – September 1 st	508	10
September 2 nd – September 8 th	509	1
September 9 th – September 15 th	535	26
September 16 th – September 22 nd	543	8
September 23 rd – September 29 th	545	2
September 30 th – October 6 th	547	2
October 7 th – October 13 th	555	8
October 14 th – October 20 th	564	9
October 21 st – October 27 th	586	22
October 28 th – November 3 rd	598	12

Confirmed COVID-19 Cases and Absolute Change among Enrolled Tohono O'odham Nation Members Residing within the Tohono O'odham Nation by Week, 2020

Week (2020)	Cumulative COVID-19 Cases Among Enrolled Tohono O'odham Tribal Members Residing within the Tohono O'odham Nation Boundary	Absolute Change ^s in Cumulative Case Counts from Previous Week
June 24 th – June 30 th	82	
July 1 st – July 7 th	106	24
July 8 th – July 14 th	148	42
July 15 th – July 21 st	168	20
July 22 nd – July 28 th	193	25
July 29 th – August 4 th	227	34
August 5 th – August 11 th	256	29
August 12 th – August 18 th	285	29
August 19 th – August 25 th	294	9
August 26 th – September 1 st	299	5
September 2 nd – September 8 th	303	4

September 9 th – September 15 th	328	25
September 16 th – September 22 nd	337	9
September 23 rd – September 29 th	337	0
September 30 th – October 6 th	338	1
October 7 th – October 13 th	346	8
October 14 th – October 20 th	350	4
October 21 st – October 27 th	360	10
October 28 th – November 3 rd	371	11

Changes due to added cases and reclassification of residence

TONHC COVID-19 Positive Test Results and Absolute Change by Week, 2020

Week (2020)	TONHC Cumulative Positive COVID-19 Test Results	Absolute Change [†] in Positive Test Results from Previous Week
June 24 th – June 30 th	153	
July 1 st – July 7 th	202	49
July 8 th – July 14 th	251	49
July 15 th – July 21 st	278	27
July 22 nd – July 28 th	302	24
July 29 th – August 4 th	342	40
August 5 th – August 11 th	382	40
August 12 th – August 18 th	403	21
August 19 th – August 25 th	416	13
August 26 th – September 1 st	426	10
September 2 nd – September 8 th	431	5
September 9 th – September 15 th	444	13
September 16 th – September 22 nd	445	1
September 23 rd – September 29 th	447	2
September 30 th – October 6 th	449	2
October 7 th – October 13 th	457	8
October 14 th – October 20 th	464	7
October 21 st – October 27 th	487	23
October 28 th – November 3 rd	505	18



Tohono O'odham Nation: Leadership Update 38

COVID-19 Response Summary

Unified Command

Current and Planned Objectives:

- Operational functions - teams that have been stood up in support of the COVID-19 response will be assessed to determine need for either continual sustainment or demobilization. Transitional plans will be developed for elements that will be phased-out.
- Continue to monitor need and activities for the Alternate Care Site(s) (ACS) non-congregate facility to sustain the capacity for housing potential COVID-19 positive patients. Low level medical needs.
- Continue to monitor activity and workload of task forces/workgroups to perform gap analysis, resource assessment, contingency planning, partner outreach, and other tasks as required
- Maintain oversight of PPE resource management by acquiring, monitoring, tracking, distributing resource assets, and storing for future needs
- In partnership with key stakeholders, develop, implement, and update plans/processes/protocols for gradually and strategically returning the workforce and reopening of businesses while protecting public health and slowing the spread of COVID-19.
- Maintain global, national, and state situational awareness of COVID-19 outbreak impacts and any surge in cases that might come from the border environment.
- Maintain continuous coordination with TON-HC Hospital and Clinic locations for operational support thru the Unified Command
- Maintain operational communications with internal and external stakeholders
- Integrate best practices and up-to-date safety guidance for the first responder community, healthcare/medical community, supporting personnel, and stakeholders
- Establish consistent community messaging and education to internal/external stakeholders
- Maintain an up-to-date financial and cost analysis of incident-related expenditures and provide updates to senior leadership

Command Emphasis:

- Continue to keep resources at a ready-state for support of healthcare preparedness activities in the event we see additional surge(s) of COVID-19.
- Maintain information sharing and resource management coordination among key stakeholders.
- Continue coordinated and synchronized public messaging regarding COVID-19 and Influenza. Keep the audiences tuned in.
- The Unified Command will continue to coordinate with external partners and agencies to achieve operational objectives.
- Ensure all orders for PPE requests are synchronized, tracked and distributed. EOC resource orders must be submitted using a 213-RR and submitted via eoc@tonation-nsn.gov
- Integrate additional stakeholders to operational briefings with the intent to foster a common operating picture and enhance working partnerships
- Maintain COVID-19 situational awareness of impacts, response actions, and gap analysis for effective support
- In addition to the COVID-19 pandemic public safety will still need to coordinate response to day-to-day (LE, Fire, EMS)
- The Unified Command must acknowledge and recognize sensitive political, legal, and security issues and develop strategies and or solutions to help establish: clear lines of authority, accountability procedures, personnel relief and rehabilitation, situational awareness, environmental conditions
- Avoid "tunnel vision"; stress causes people to focus narrowly on the things they consider most important and it may be the wrong thing for the given time.



Tohono O'odham Nation: Leadership Update 38

COVID-19 Response Summary

- Ensure the accountability of deployed personnel/equipment that receive work assignments thru the EOC
- Keep the Policy Group and senior leadership adequately informed
- Sustain an operational battle rhythm, to include Planning P methodologies, Incident Action/Coordination/Support Planning
- Coordinate unified public messaging with all partner agencies

Strategic Actions:

- TON-HC and Unified Command continue to coordinate in supporting the COVID-19 cases. UC Task Force Leader communicates with TON-HC if patient(s) need to be housed in an Alternate Care Sites.
- Unified Command Distribution Team continues in filling resource requests from approved 213-RR's.
- Unified Command Compliance Team continues to monitor the department's compliance with all required safety precautions and assist departments with implementing safety measures.
- Unified Command continues with planning efforts through the State for testing support.
- On Friday, October 30, 2020, TONHC and Unified Command conducted an **October Flu Clinic** at the Tohono Plaza in Sells, AZ from 11:30am – 5:30pm
- On Wednesday, October 28, 2020, TONHC and Unified Command conducted an After Hour Flu Clinic at the Tohono Plaza in Sells, AZ from 4:00pm – 7:00pm.
- On Wednesday, October 28, 2020 TONHC and Unified Command conducted the second Drive-Thru Flu Clinic at the Santa Rosa Health Center.

Public Information:

- Project: Native Reach
- Project: Billboard(s)
- Project: Return-To-Work Training Video
- Project: Every Door Direct Mail

State of Arizona:

September 1, 2020 – Governor Ducey issued E.O. 2020 – 53, *Driver License Renewals for Arizonans 65 or Older Amending and Extending E.O. 2020 – 08*

September 8, 2020 – Governor Ducey issued E.O. 2020 – 54, *Enhanced Surveillance Advisory - Monitoring The Spread of COVID-19*

Additional Online Resources:

Arizona data: [Arizona Department of Health Services](#)

Resilient Arizona Crisis Counseling Program: <https://resilientarizona.org/>

Global Data: [Center for Systems Science AZ Engineering at John Hopkins University](#)

National Guidance: [Centers for Disease Control and Prevention](#)

The COVID-19 Hotline 2-1-1: 211arizona.org



Tohono O'odham Nation: Leadership Update 38

COVID-19 Response Summary

Resources for Arizonans: <https://arizonatogether.org/>

AZ Executive Orders (COVID-19): [Arizona Executive Orders](#)

Wildfires: <https://inciweb.nwcg.gov/>

Encino – Pima County, Size: 14,905 acres / 90% containment

- Tuesday, October 6, 2020; the Encino Fire began burning on State land areas and is now burning on Tohono O'odham Nation Lands.
- Resources Assigned: 40 personnel

Cow Canyon – Apache County, Size: 35,371 Acres / Containment: 20%



Tohono O'odham Nation: Leadership Update 38

COVID-19 Response Summary

Community Lifelines:

The Unified Command conducted the following food distributions for Districts and OIM (O'odham in Mexico). The distribution included the following contents:

33rd Shamrock Distribution - COVID 19 - 11/05/2020			
(11) Districts & OIM			
District	OIM	ITEM DESCRIPTION	UNIT
3	2	POTATO, RUSSET 70CT	1/50/LB
3	2	POTATO, YAM JMBO	1/40/LB
3	2	CARROT, JMBO #1	1/25/LB
3	2	ONION, YELLOW JUMBO #2 BAG	1/50/LB
3	2	PEPPER, ANAHEIM GRN	1/22.5/LB
3	2	SQUASH, ZUCCHINI MED 20-24LB	1/22/LB
3	2	PEPPER, JALAPENO #2 BULK	1/35/LB
3	2	EGG, FRESH MED AA LOOSE 1/2 CS	1/15/DZ
3	2	BREAD, WHITE ROUNDTOP 1/2" BKD FZN	14/20/OZ
2	1	RICE, LONG GRAIN WHT 4% BRKN	1/50/LB
2	1	BEAN, PINTO PREWASHED	1/50/LB
3	2	FLOUR, AP H&R	2/25/LB
3	2	APPLE, GALA FUJI WXFY	1/150/CT
3	2	ORANGE, CHOICE 138 CT	1/138/PK
3	2	SALSA, CHILE DE FRESCA 27Z	12/27/OZ
6	4	SOUP, CHICK NOODLE RTU	24/7.25/OZ
3	2	LUNCH MEAT, SPAM LS	12/12/OZ
3	2	TUNA, ALBACORE SOLID WHT WATER PK	24/12.25/Z
2	1	SOUP, CREAM OF MSHRM	12/50/OZ
3	2	COFFEE, COLOMBIAN 100% 2.5Z	64/2.5/OZ
2	1	CREAMER, FRENCH VANILLA ASEPTIC PC	1/288/PK
2	1	CREAMER, HAZELNUT ASEPTIC PC	1/288/PK
3	2	DRINK MIX, CHERRY	12/24/OZ
3	2	DRINK MIX, GRAPE	12/24/OZ
2	1	SNACK, FRUIT MIX .9Z	250/.9/OZ
3	2	CEREAL, FROOT LOOPS	4/31/OZ
3	2	CEREAL, CHEERIOS	4/29/OZ
3	2	CEREAL, OATMEAL QUICK TUBE	12/42/OZ
6	4	JERKY, BEEF ORIG	48/.9/OZ
3	2	TRAIL MIX, NUT & CHOC	72/2/OZ
15	8	TURKEYS	4/CS
20	10	HAM	2/CS
3	2	BLEACH, LIQ 6.15% FOOD SRV EPA	4/96/OZ
3	2	CLEANER, AP ORNG RTU	6/32/OZ
3	2	WET WIPE, CLEANING TABLE TURNER	12/80/PK
3	2	CLEANER, DISINFECTANT TB	12/32/OZ
3	2	TISSUE, BATH CORELESS 2PLY	36/1000/PK
3	2	CLEANER, HARD SURFACE PINE	4/1/GL
2	1	CLEANSER, DEODORIZING PWDR	24/21/OZ
1	1	SURGICAL MASK	2,000
11	11	HAND SANITIZER	12/16/OZ

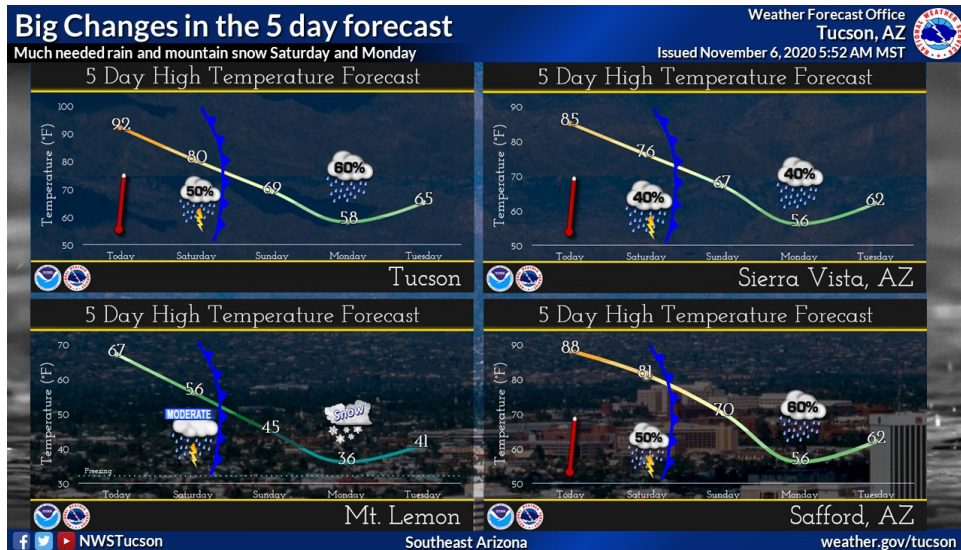


Tohono O'odham Nation: Leadership Update 38

COVID-19 Response Summary

Weather:

One more day of record or near record high temperatures then much cooler temperatures this weekend into early next week as a storm system brings a chance valley rain, mountain snow showers and breezy conditions to the area Saturday and Monday.



Today	Tonight	Saturday	Saturday Night	Sunday	Sunday Night	Monday	Monday Night	Tuesday
Partly Sunny	Mostly Cloudy	Breezy, Partly Sunny then Chance Showers	Slight Chance Showers and Breezy then Partly Cloudy	Mostly Sunny then Mostly Sunny and Breezy	Slight Chance Showers and Breezy then Chance Showers	Chance Showers then Slight Chance Showers	Mostly Clear	Sunny
High: 91 °F	Low: 66 °F	High: 77 °F	Low: 46 °F	High: 66 °F	Low: 47 °F	High: 57 °F	Low: 38 °F	High: 63 °F

Today: Partly sunny, with a high near 91. South wind 6 to 11 mph increasing to 13 to 18 mph in the afternoon. Winds could gust as high as 28 mph.

Tonight: Mostly cloudy, with a low around 66. South wind 10 to 14 mph.

Saturday: A 30 percent chance of showers after noon. Partly sunny, with a high near 77. Breezy, with a south wind 15 to 21 mph, with gusts as high as 31 mph.

Saturday Night: A 20 percent chance of showers before midnight. Partly cloudy, with a low around 46. Breezy, with a south southwest wind 15 to 20 mph decreasing to 6 to 11 mph after midnight. Winds could gust as high as 30 mph.

Sunday: Mostly sunny, with a high near 66. Breezy, with a south wind 5 to 10 mph increasing to 16 to 21 mph in the afternoon. Winds could gust as high as 31 mph.

Sunday Night: A 50 percent chance of showers, mainly after midnight. Mostly cloudy, with a low around 47. Breezy.

Monday: A 50 percent chance of showers, mainly before noon. Partly sunny, with a high near 57.

Monday Night: Mostly clear, with a low around 38.

Tuesday: Sunny, with a high near 63.

Tuesday Night: Clear, with a low around 38.

Veterans Day: Sunny, with a high near 67.

Wednesday Night: Mostly clear, with a low around 40.

Thursday: Sunny, with a high near 66.