



# Tohono O'odham Nation Health Care (TONHC)

COVID-19 Situation Update: February 17, 2021

T-Ñukuda Ha'icu Cihañig

This is a rapidly evolving situation. Information is based upon data as of February 17, 2021 at 7:00 and may change as more data becomes available.

There is surge in the number of COVID-19 cases in the Tohono O'odham Nation

## COVID-19 Data among Members of Tohono O'odham Nation (TON)

Total Cases

1,711

New Cases  
This Week

22

Percent Positive  
Tests This Week

12%

Recovering (%)

51%

Deaths

63

## COVID-19 Contacts Interviewed

3,647

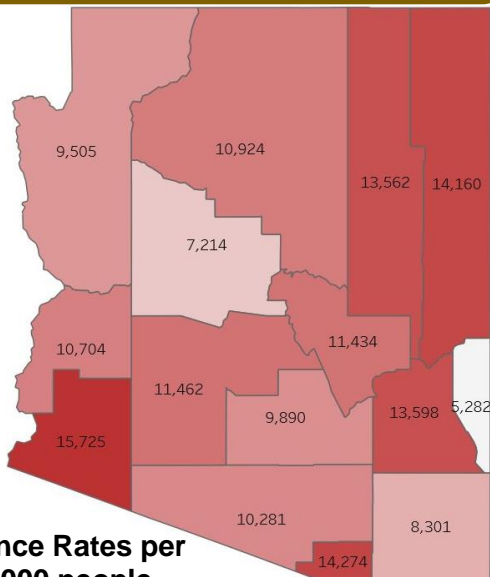
**Pima County COVID-19 School Reopening  
Recommended Delivery Model: Virtual  
(02/11/2021)**

## COVID-19 Cumulative Incidence Rate among TON members residing on the Tohono O'odham Nation

8,954 per 100,000

Arizona

11,142 per 100,000

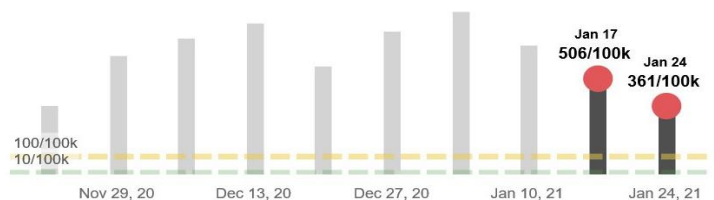


Incidence Rates per  
100,000 people

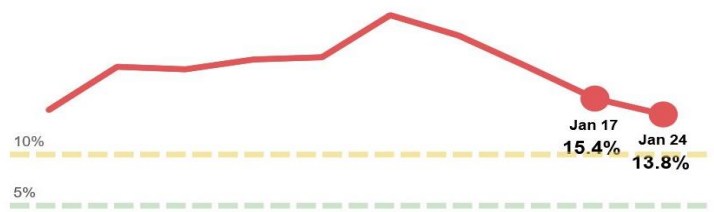
Showing data for **Pima County**  
(Southeastern Region)

Recommended Delivery Model: **Virtual**

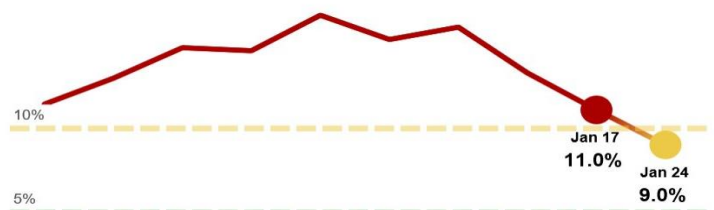
### 1) Cases per 100,000 individuals



### 2) Percent positivity



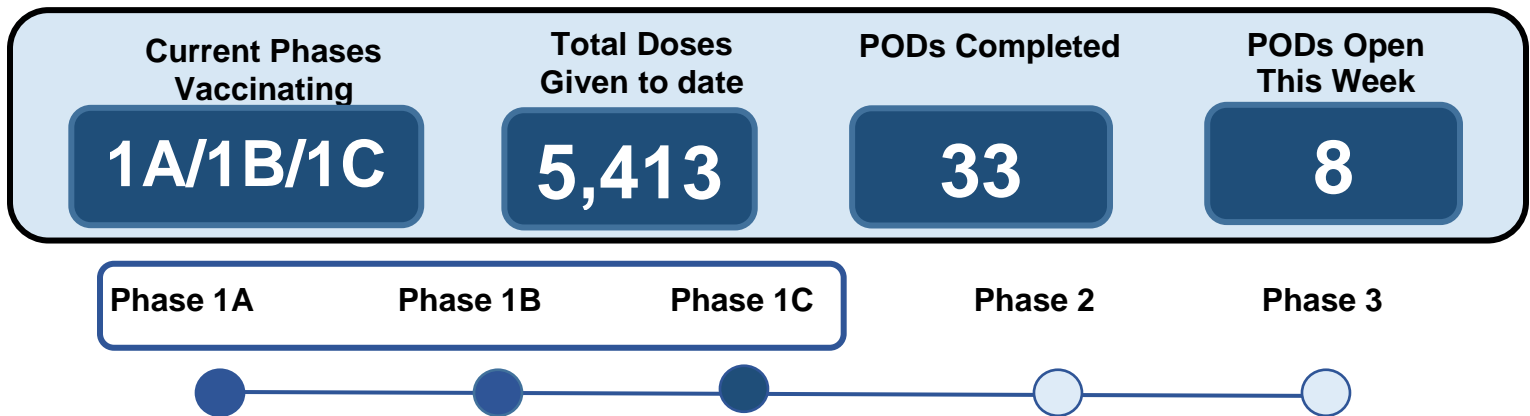
### 3) Hospital visits for COVID-like illnesses in the region



Incidence rate is the number of new cases of COVID-19 in the population over a specified period. This allows comparison of areas with different population sizes. Population size is from <http://www.tonation-nsn.gov/districts/> (Fall 2016), accessed 8/26/20.

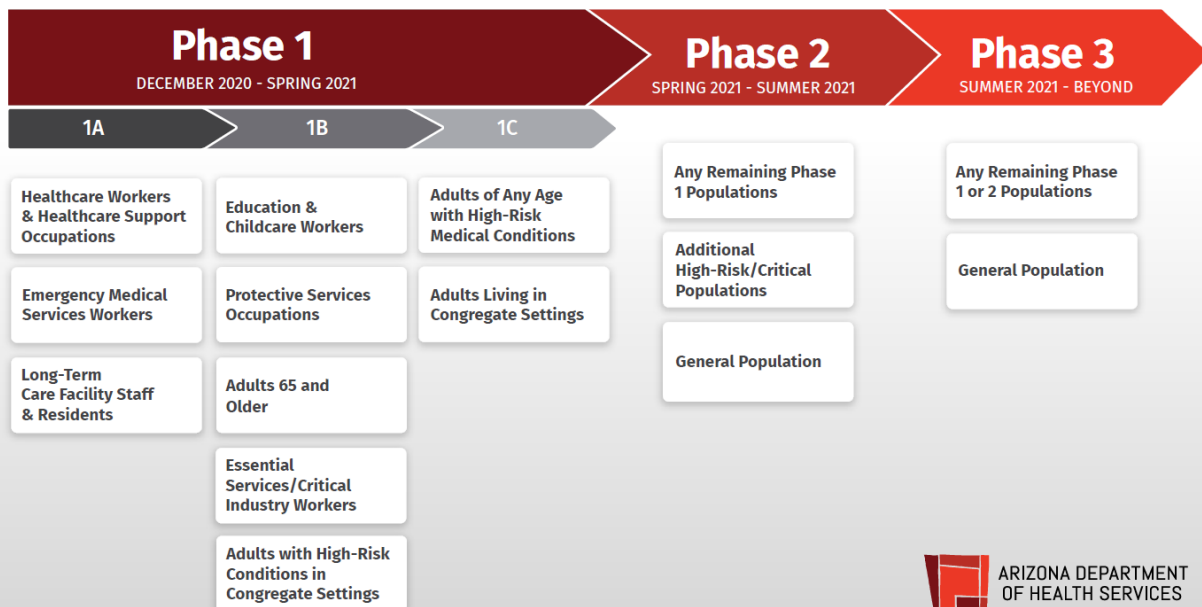
# COVID-19 Vaccination Points of Dispensing (PODs) in TON

February 17, 2021: TONHC COVID-19 Vaccination Program is currently in Phase 1C



The Moderna COVID-19 received Emergency Use Authorization on December 18, 2020. TONHC will follow guidelines from the Centers for Disease Control and Prevention (CDC) and Arizona Department of Health Services (ADHS) to provide vaccine on the Nation in phases. The guidelines aim to decrease death and serious disease, preserve the functioning of society, and reduce the burden COVID-19 is having on people already facing disparities. ADHS distributes vaccines to health jurisdictions, including Tohono O’odham Nation, based on population. TONHC began to administer COVID-19 vaccinations on December 23, 2020 at Sells Hospital and San Xavier Health Care Center through mass vaccination clinics, also known as “points of dispensing” (PODs) for Phases 1A and 1B.

## Arizona COVID-19 Vaccine Prioritization\*



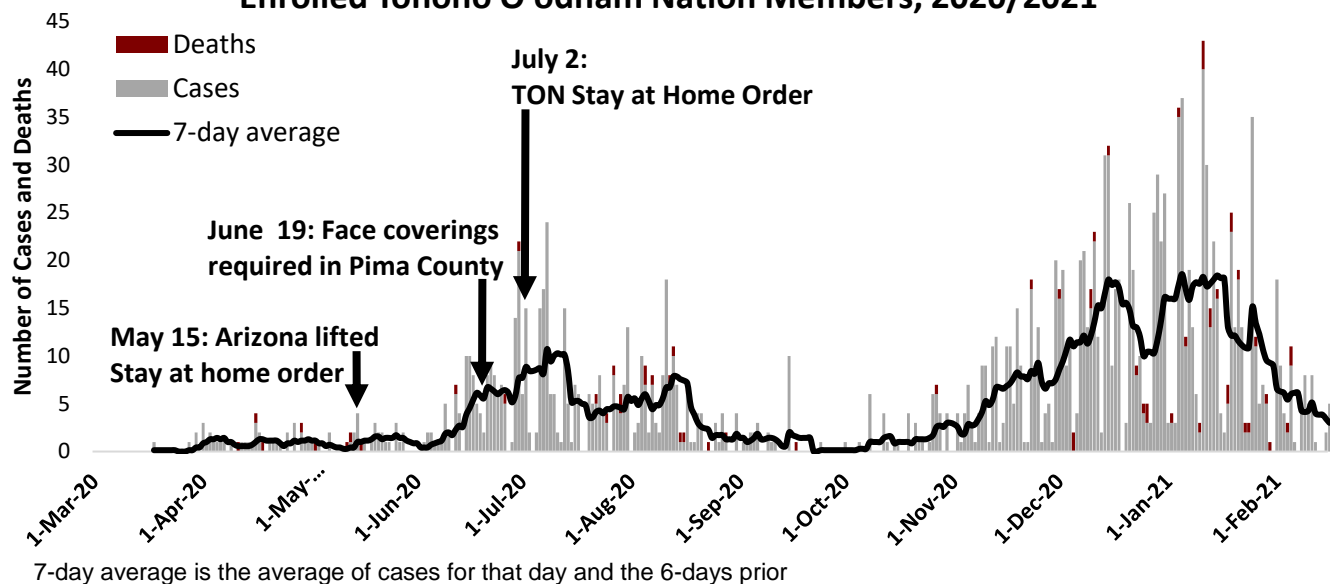
\*Distribution groups and timelines of phases shown are tentative. Local allocators may further subprioritize in each phase based on vaccine supply. This information is subject to change due to future vaccine distribution guidance recommendations, FDA approval of vaccines, and vaccine allocation/availability.



**COVID-19 Vaccine is currently available through TONHC to members of the Tohono O’odham Nation and other tribes in Phases 1A, 1B, and 1C eligible groups.** TONHC will also offer vaccination to non-tribal/non-native persons who either work or live on the Tohono O’odham Nation, AND fall into one of the eligible groups according to the Arizona COVID-19 Vaccine prioritization\* (above). All persons coming for vaccination are required to bring employee ID or

tribal ID. Public Service Announcements will provide dates and information for registration. Most vaccine PODs will be on Wednesdays. Safety is a top priority in delivering a vaccine. We have a medical provider onsite at all times and infection control monitors. The Moderna vaccine requires an injection into the upper arm, with a booster shot given four weeks later.

### Confirmed COVID-19 Cases and Deaths by Date among Enrolled Tohono O'odham Nation Members, 2020/2021



#### What's NEW?

TONHC continues to vaccinate following guidelines from CDC. TONHC is now offering COVID-19 vaccinations for persons in Phases 1A, 1B, and 1C who live on, work with, or are members of the Tohono O'odham Nation or other tribes (please see the vaccine section for details). Residents of Pima County and other counties who are not associated with the Tohono O'odham Nation will receive vaccine through their health jurisdictions. COVID-19 vaccine demand outpaces supply and local clinics are expanding as supply becomes available. Arizona has started to incorporate COVID-19 vaccination to phase – eligible groups through some retail pharmacies.

- Almost 1.3 million doses of COVID-19 vaccine have been administered in Arizona.
- As of 2/17/2021, TONHC has administered 5,413 at San Xavier Health Center, San Simon Health Center, and Sells Hospital.
- Currently, Pfizer and Moderna are the only two vaccines approved under Emergency Use Authorization in the United States.

	Enrolled Member of Tohono O'odham Nation (TON)	Pima County	Arizona
<b>Total Cases</b>	<b>1711</b>	<b>107,401</b>	<b>801,055</b>
<b>Number of cases in last 7 days</b>	<b>21</b>	<b>1572</b>	<b>11810</b>
<b>Incidence Rate last 7 days (per 100,000)</b>	<b>100</b>	<b>361</b>	<b>396</b>
<b>Incidence Rate (per 100,000)</b>	<b>8,954</b>	<b>10,281</b>	<b>11,143</b>
<b>Number Deaths</b>	<b>63</b>	<b>2,082</b>	<b>15,063</b>
<b>Deaths (% of total cases)</b>	<b>4%</b>	<b>2%</b>	<b>2%</b>
<b>Number Hospitalized</b>	<b>221</b>	<b>6,561</b>	<b>55,983</b>
<b>Hospitalized (% of total cases)</b>	<b>13%</b>	<b>6%</b>	<b>7%</b>

- One new vaccine (Johnson & Johnson/Janssen) is under evaluation this month by the Food and Drug Administration (FDA) this month. Another new vaccine (AstraZeneca) may undergo evaluation in the next couple of months. This could expand supply. Vaccines are available to the public generally 1-2 months after FDA, CDC, and ACIP review and approval
- The CDC has issued the following new guidelines:
  - Vaccinated persons exposed to someone with suspected or confirmed COVID-19 are not required to quarantine if they meet all of the following:
    - Are fully vaccinated (over 2 weeks after the 2nd dose in a 2-dose series, or  $\geq 2$  weeks after one dose of a single-dose vaccine)
    - Are within 3 months following receipt of the last dose in the series
    - Have been without symptoms since the COVID-19 exposure
  - All persons should continue mask wearing and physical distance, even after vaccination. COVID-19 positive persons should isolate themselves for 10 days, even from vaccinated persons.
- Reports of new variants (strains) of COVID-19 with increased contagiousness continue in many countries, including the USA.

Surge: COVID-19 cases continue to strain hospital and medical resources across the country.

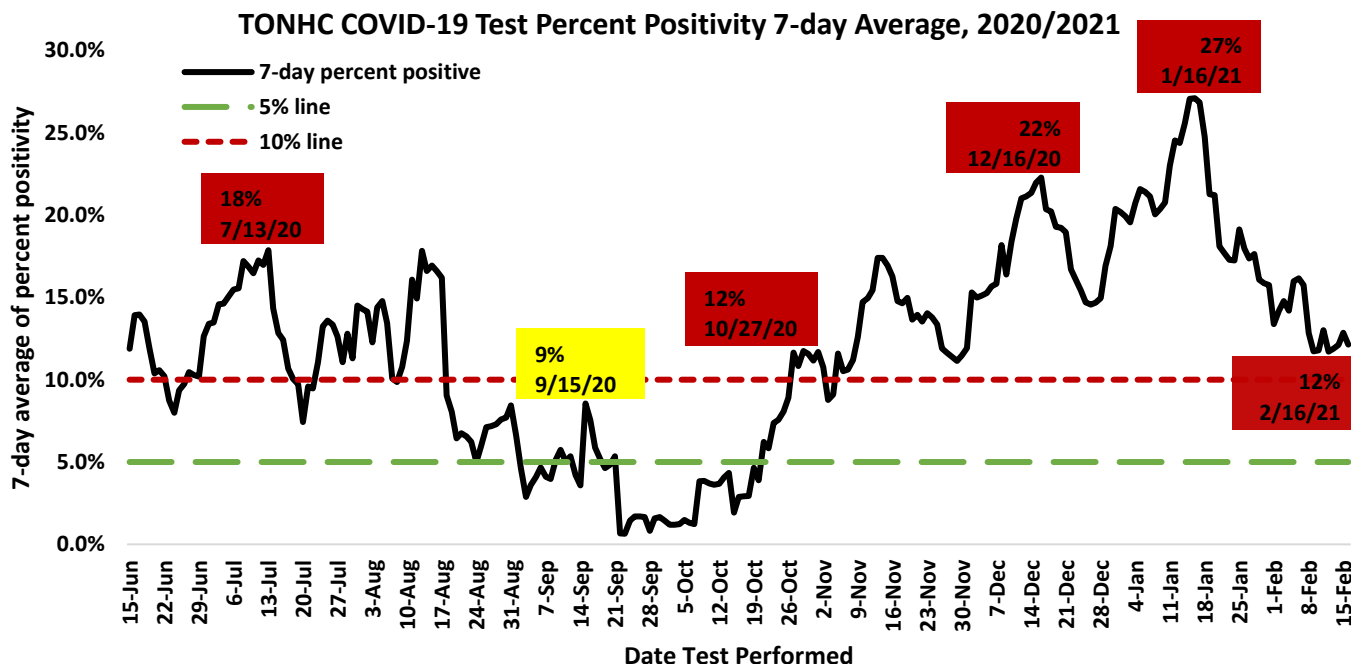
Arizona Hospital bed availability:

General beds: 11% (22% of general patients have COVID-19);

Intensive care beds: 15% (33% of ICU patients have COVID-19).

TON Executive Order 2020-09 further limits gatherings, continues to enforce a nighttime curfew, and enforces other policies to reduce the spread of COVID-19. Gatherings appear to be the primary cause of outbreaks on the Nation.

## 12,355 COVID-19 Tests Performed at TONHC



Weekly test percent positivity is calculated using the day tests were performed and 6-days prior (7-day detected "positive" results)/(7-day total tests performed) x 100

## Arizona Department of Health Services Benchmarks

Benchmarks	Minimal	Moderate	Substantial
Cases	<10 cases/100,000	10-100 cases/100,000	>100 cases/100,000
Percent Positivity	<5%	5-10%	>10%
COVID-like Illness	<5%	5-10%	>10%

## World, USA, Arizona COVID-19 Information

### World (WHO):

Total cases: 109,068,745

Total deaths: 2,409,011

Updated: 17 February 2021, 03:03 am GMT-7

### USA (CDC):

Total cases: 27,542,421

Total deaths: 485,070

Updated: Feb 16 2021 12:28PM

### Arizona (AZDHS): Total cases:

789,245 (2/10) --> **801,055 (2/17)**

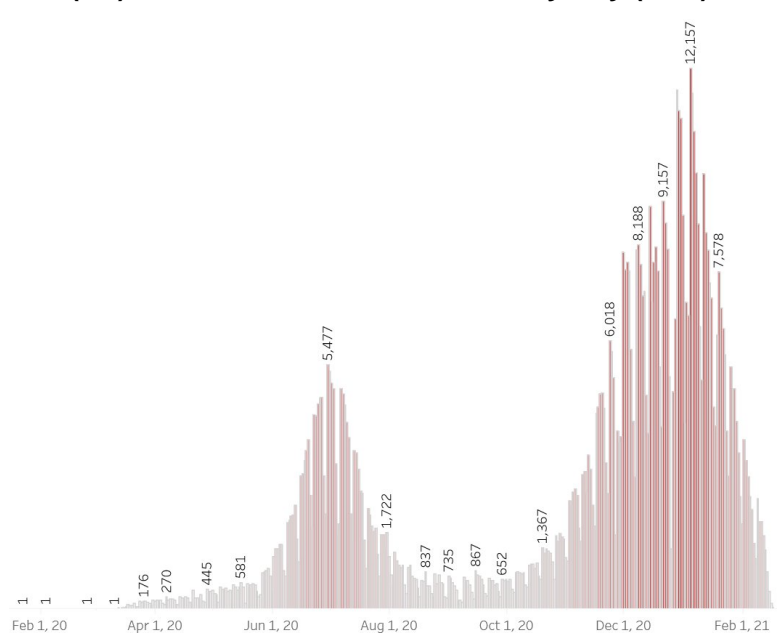
### Total deaths in Arizona:

14,462 (2/10) --> **15,063 (2/17)**

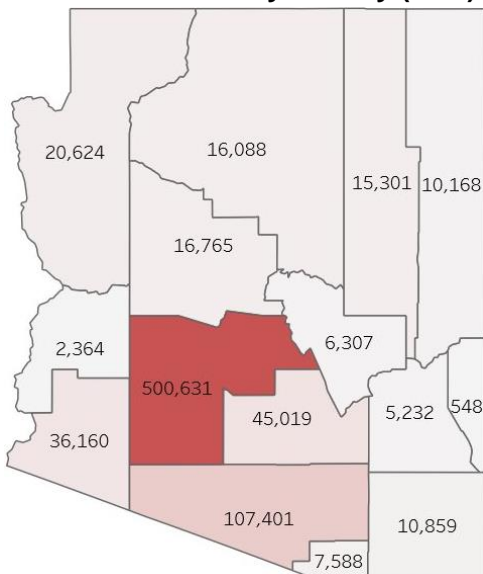
### Total cases in Pima County:

105,829 (2/10) --> **107,401 (2/17)**

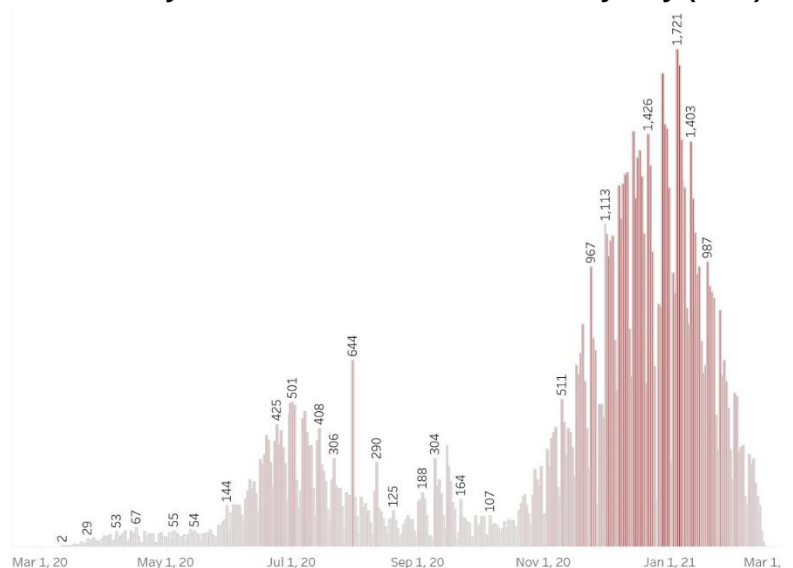
### Arizona (AZ) Confirmed COVID-19 Cases by Day (2/17)



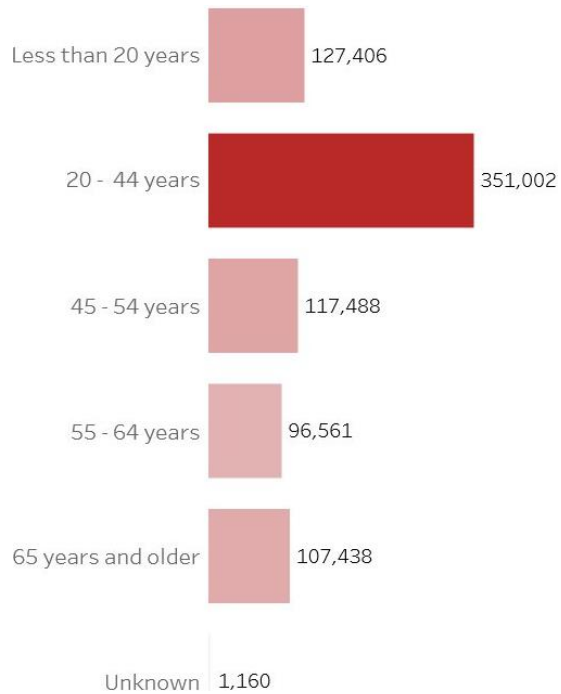
### COVID-19 Cases by County (2/17)



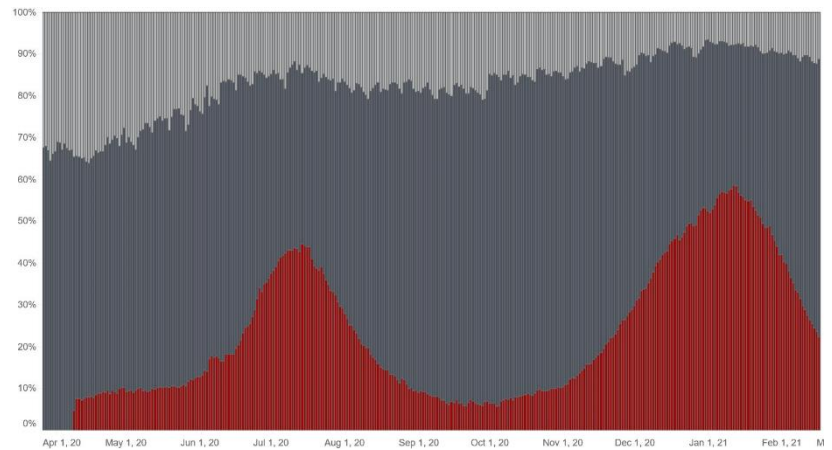
### Pima County Confirmed COVID-19 Cases by Day (2/17)



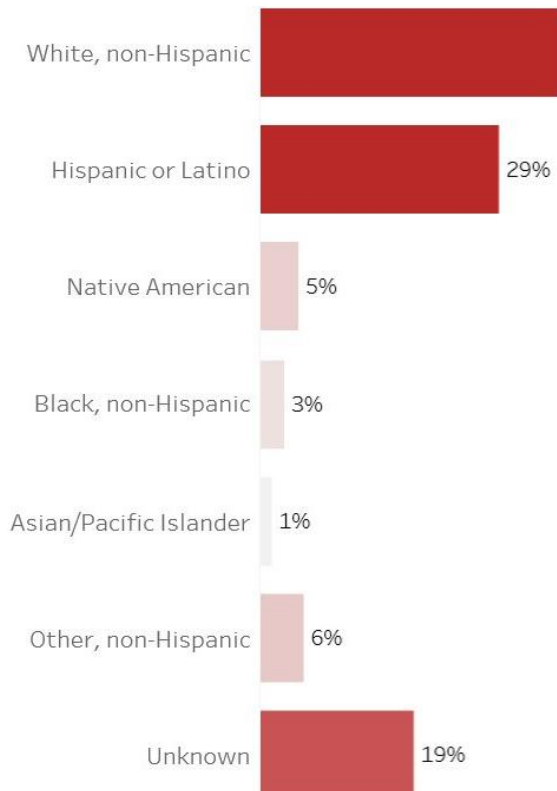
### AZ COVID-19 Cases: Age Distribution (2/17)



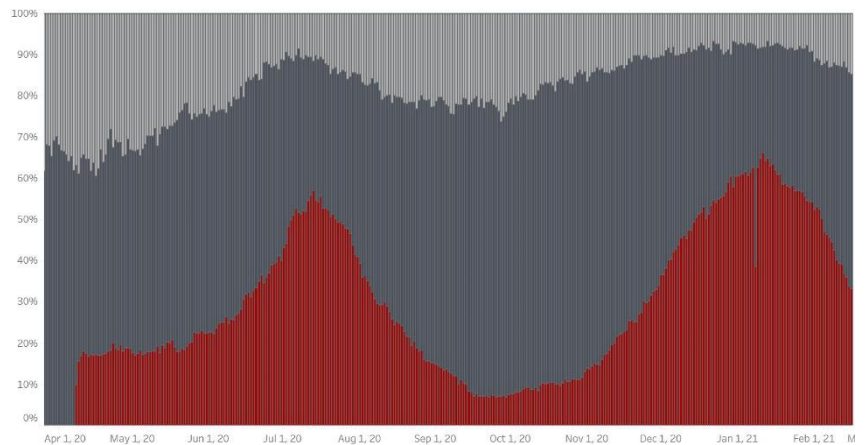
### Number of Inpatient Beds (89% in use on 2/16/21, 22% due to COVID-19)



### AZ COVID-19 Cases: Race/Ethnicity (2/17)



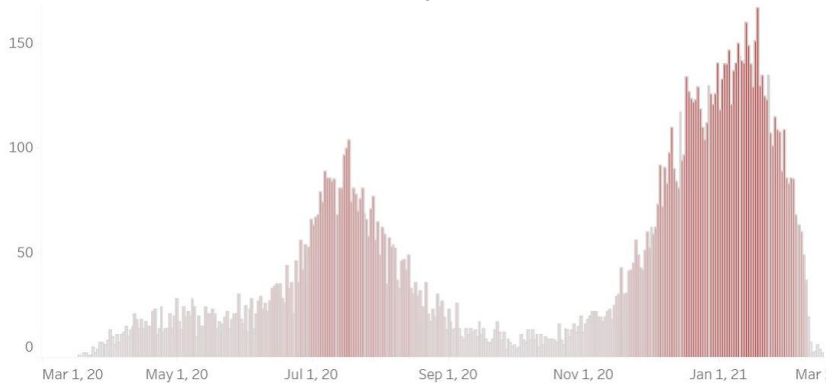
### Number of Intensive Care Unit (ICU) Beds In Use (85% in use 2/16/21, 33% due to COVID-19)



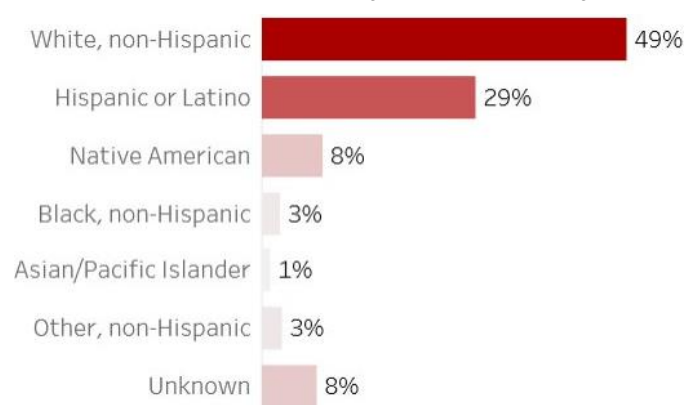


## Arizona (AZDHS): 15,063 deaths, Updated February 17, 2021

COVID-19 Deaths by Date in Arizona



AZ COVID-19 Deaths by Race/Ethnicity



### Tohono O'odham Nation COVID-19 Positive Case Information

	Enrolled Member of Tohono O'odham Nation	Enrolled Member of Another Tribe or Other	Total
Residing within Boundaries of Tohono O'odham Nation	1169	43	1212
Residing outside Boundaries of Tohono O'odham Nation	542	231	773
Total	1711	274	1985

**1,711** members of the Tohono O'odham Nation have tested positive\* for COVID-19 (as of 2/17/2021 at 7:00). On 2/10/2021, there were 1,689. This represents a **1%** increase over the last week. <sup>†</sup> The number of positive cases is almost **24x** the number 36 weeks ago (72 on 6/9/2020).

**1169** members of the Tohono O'odham Nation who tested positive reside in the Tohono O'odham Nation. On 2/10/2021, there were 1155. This represents a **1%** increase<sup>†</sup> over the last week. The number of persons who reside in the Tohono O'odham Nation and tested positive for COVID-19 is almost **49x** the number 36 weeks ago (24 cases on 6/9/2020).

This is consistent with a surge in cases beginning approximately 10/26/2020.

- **870** members (51%) are recovering (among members of the Tohono O’odham Nation)<sup>†</sup>
- **63** deaths among members of the Tohono O’odham Nation and **4** members of another tribe.
- **3** deaths in hospital in Tohono O’odham Nation, 60 in hospitals outside the Tohono O’odham Nation.

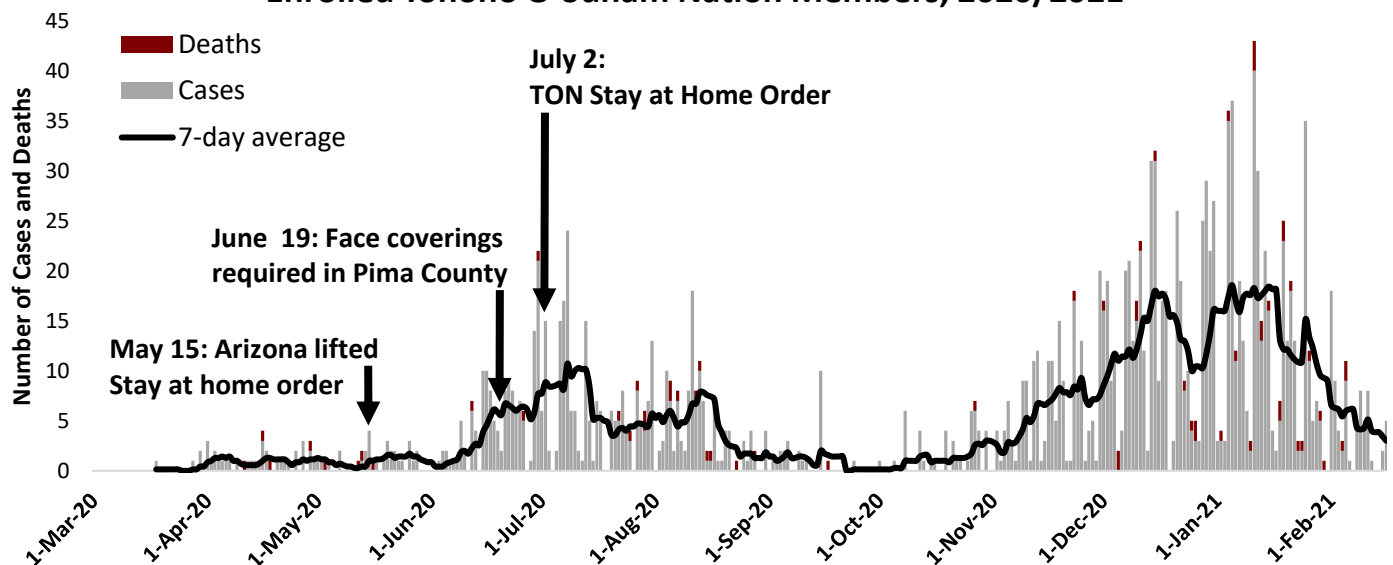
\*COVID-19 positive result means COVID-19 test result of “detected”.

<sup>†</sup>Defined as percentage change (most recent number – previous number)/previous number \* 100

<sup>§</sup>Absolute change in cumulative case count is the number of cumulative cases through week 2 subtracted from the number of cumulative cases through week 1, [week2 – week1]

<sup>††</sup>Recovering is defined as having diagnosis/symptom onset 14-days ago, improving, and no longer hospitalized.

### Confirmed COVID-19 Cases and Deaths by Date among Enrolled Tohono O’odham Nation Members, 2020/2021

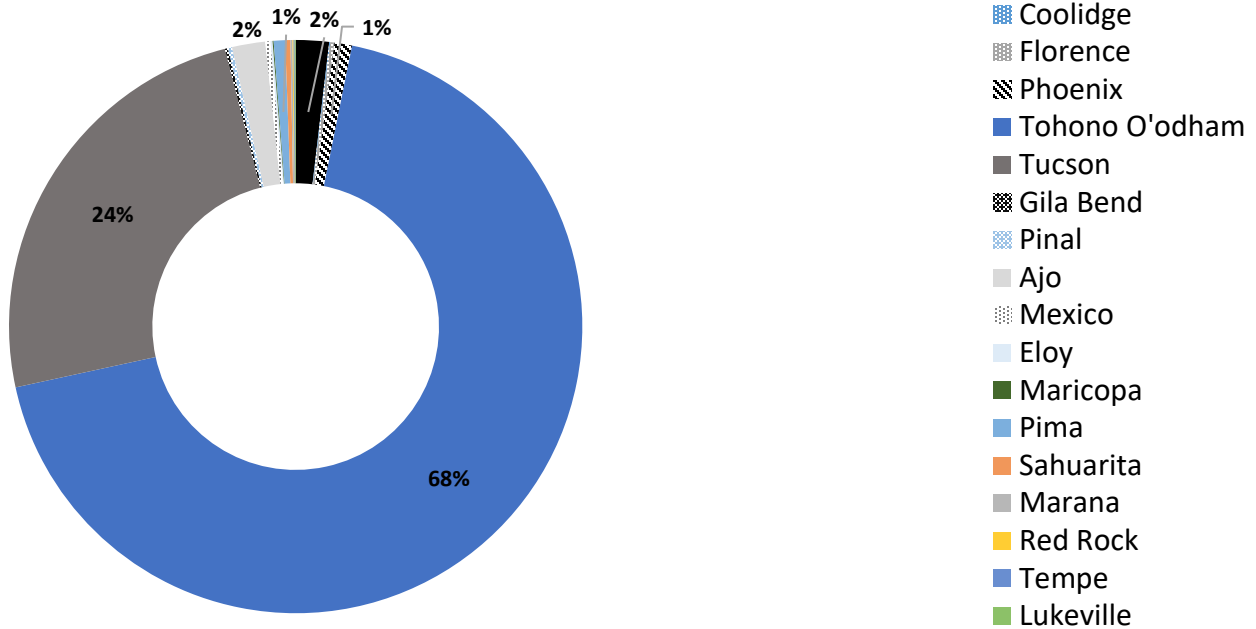


7-day average is the average of cases for that day and the 6-days prior

**7/22/2020** was the first week that the percentage of persons residing in the Tohono O’odham Nation was over 50% of the cases.

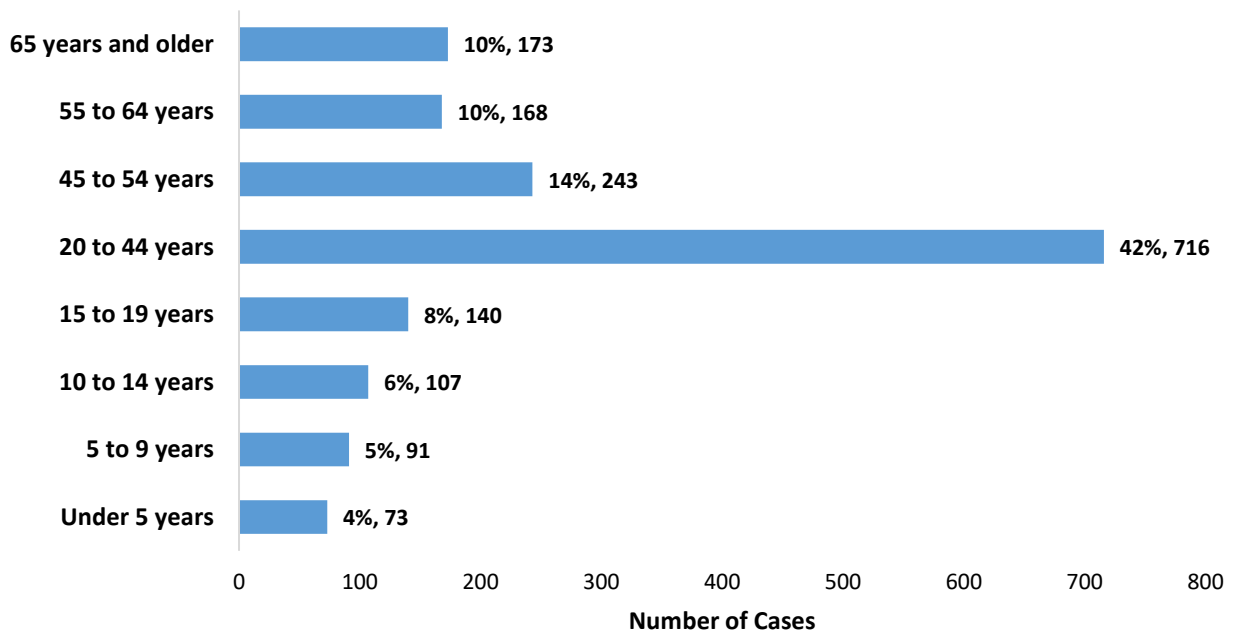


### Region of Residence for COVID-19 Cases among Members of the Tohono O'odham Nation



Some areas are <1%

### Age Distribution of COVID-19 Cases among Tohono O'odham Members, 2020/2021



**Laboratory-confirmed COVID-19 among Tohono O'odham Nation Enrolled Members,  
2020/2021**

	Count (n)	Percent (%)	State of Arizona Percent (%)
TON members tested positive for COVID-19	1711		
Asymptomatic/Pre-symptomatic	315	18%	
TON Reside in Reservation	1169	68%	
Hospitalized	221	13%	7%
Recovering	870	51%	
Died	63	4%	2%

	Median (years)	Minimum (months)	Maximum (years)
Age	35	0	102

	Male	Percent (%)	Female	Percent
Sex	705	41%	1006	59%

At TONHC, we received the first presumptive positive test result for COVID-19 for a patient seen at San Xavier Health Center in the same day clinic on 3/30/2020. In response, we reached out to clinical staff and the patient/household/community to discuss exposure risk, how to monitor for symptoms, and help guide any recommendations for isolation or quarantine. We anticipate more cases in the future, and we are working together to tackle this challenge. Employee health has reached out to staff for contact tracing. Public health nursing has conducted community contact tracing. Please remember to keep patient and employee results confidential.

## COVID-19 Laboratory Testing at TONHC

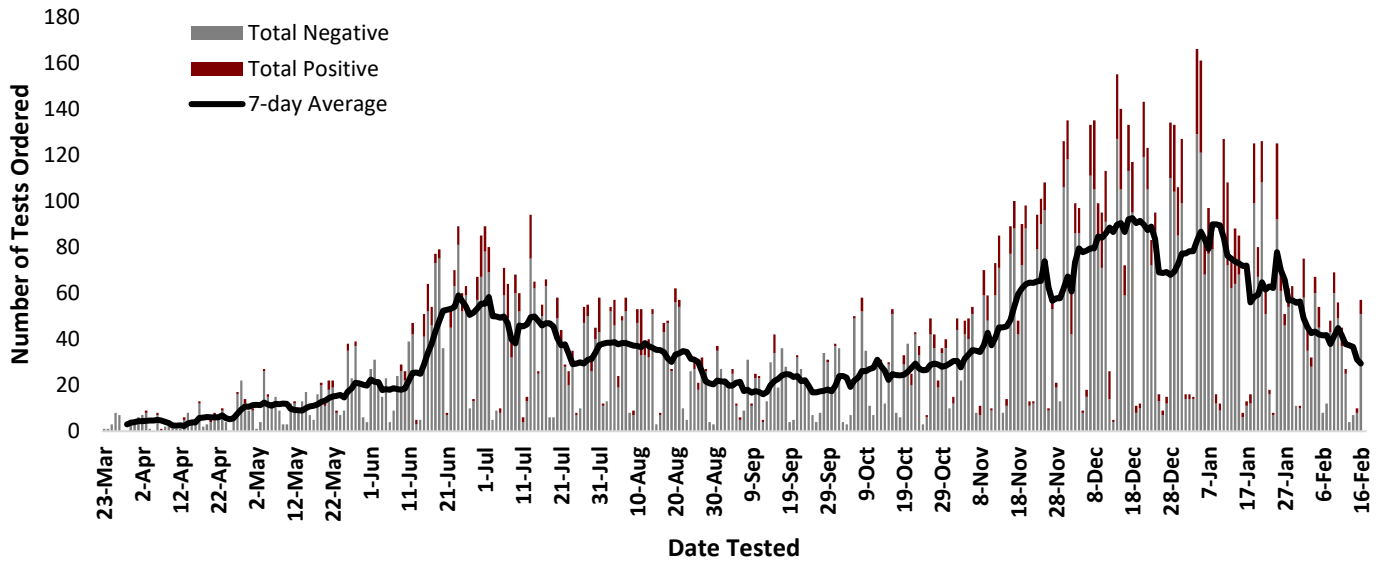
TONHC total number of COVID-19 testing (as of 2/17/2021 at 7:00): **12,355** tests performed:

- 11,368 = patients (anyone who receives care at a TONHC facility)
- 889 = employees
- 98 = first responders

We continue to increase our testing capacity. On 2/10/2021, there were 12,142 tests. As of 2/17/2021, **1,689** tests results were positive\* for COVID-19. On 2/10/2021, there were 1,664 tests. The number of positive test results are **44x** the amount compared to 36 weeks ago (since 6/9/2020). 38 total tests were positive on 6/9/2020. **78** TONHC employees have tested positive.

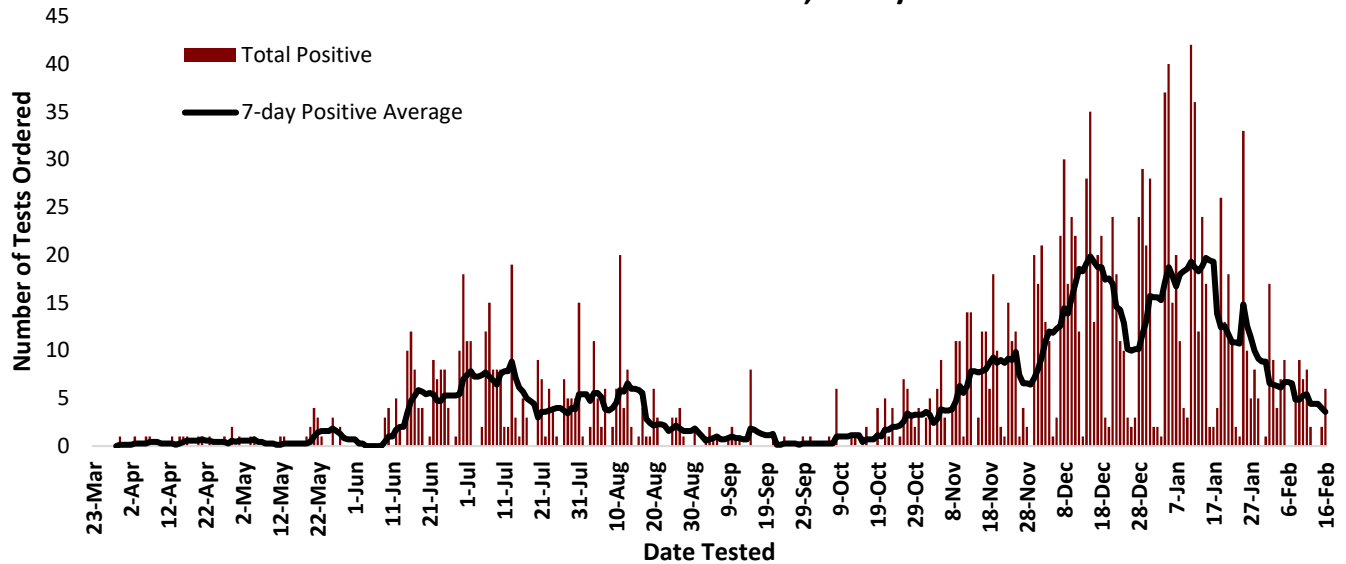
As of 2/17/2021 at 7:00, 7,630 individual TONHC patients have tested for COVID-19. This comprises **38%** of the TONHC User Population. User Population is defined as patients who have received care at TONHC at least twice in the past three years.

## COVID-19 Tests Performed at Tohono O'odham Health Care by Result, 2020/2021



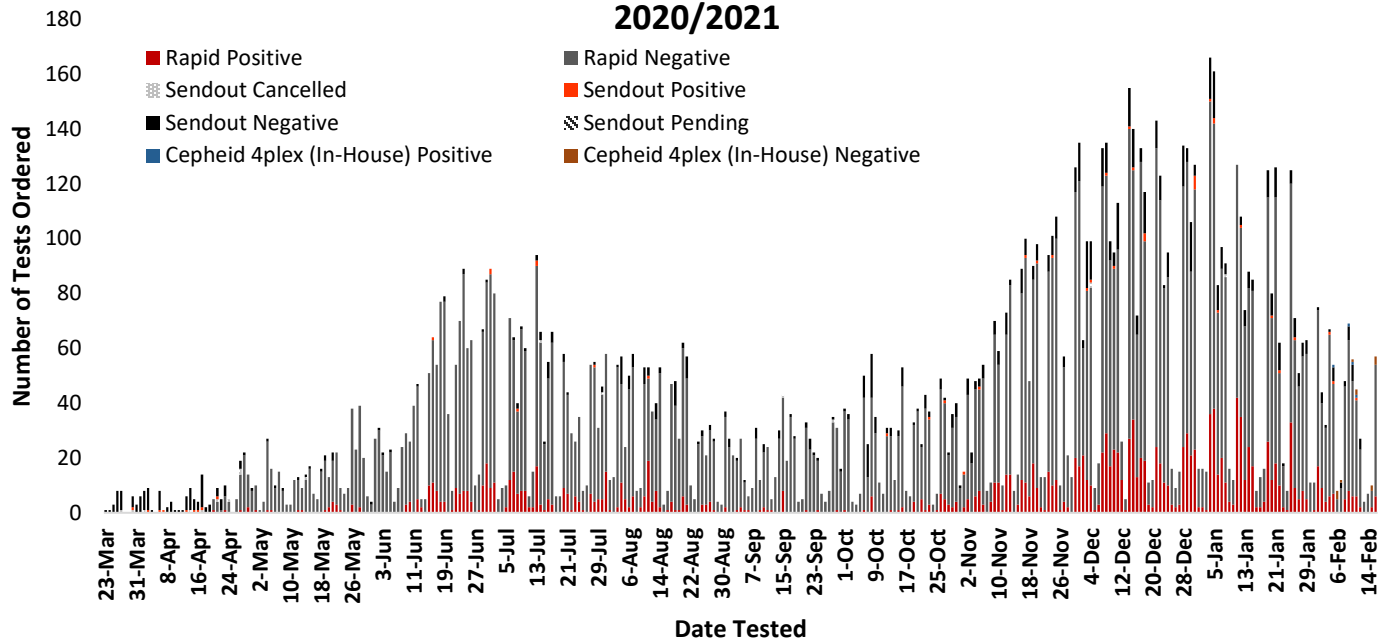
7-day average is the average of cases for that day and the 6-days prior

## COVID-19 Positive Tests Performed at Tohono O'odham Health Care, 2020/2021



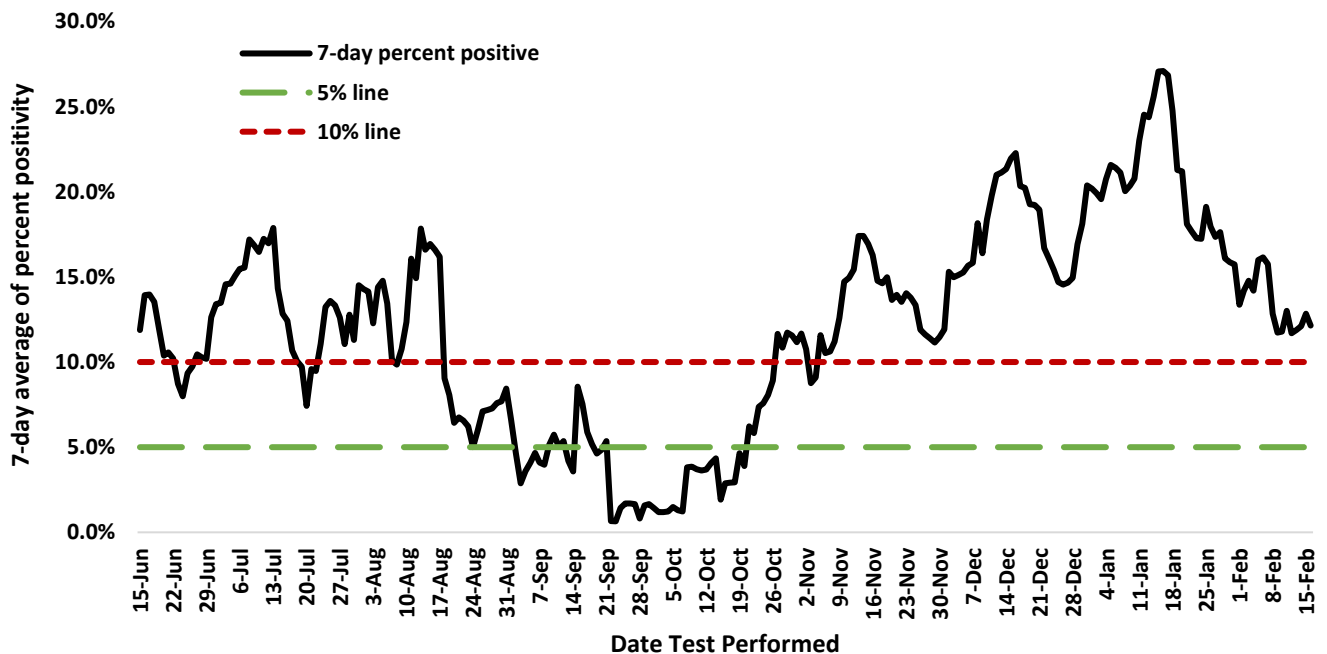
7-day average is the average of cases for that day and the 6-days prior

## COVID-19 Tests Performed at Tohono O'odham Health Care by Type, 2020/2021



COVID-19 testing began at TONHC on March 23, 2020. Same-day testing is available at San Xavier, Sells, and San Simon. This means all the equipment to run the tests are in the clinic laboratories at San Xavier, Sells, and San Simon. We began on-site same-day testing on April 20, 2020. There are two types of tests: send-out test or same-day/rapid test. Send-out testing is used for specific cases. As of 9/1/2020, on-site qualitative total antibody testing is available for specified cases.

## TONHC COVID-19 Test Percent Positivity 7-day Average, 2020/2021



\* Weekly test percent positivity is calculated using the day tests were performed and 6-days prior (7-day detected "positive" results)/(7-day total tests performed) x 100%

We have nine on-site Abbott ID NOW™ machines that are used for same-day testing. We are pursuing avenues for more testing machines for on-site testing. In addition to expand our testing capabilities, medical assistants at TONHC completed competencies in performing COVID-19 nasal swab testing to assist with performing testing

**Effective 9/24/2020, patients with no symptoms and no known exposure to someone with COVID-19 can be tested at TONHC. For all testing, please call and schedule an appointment at your clinic.**

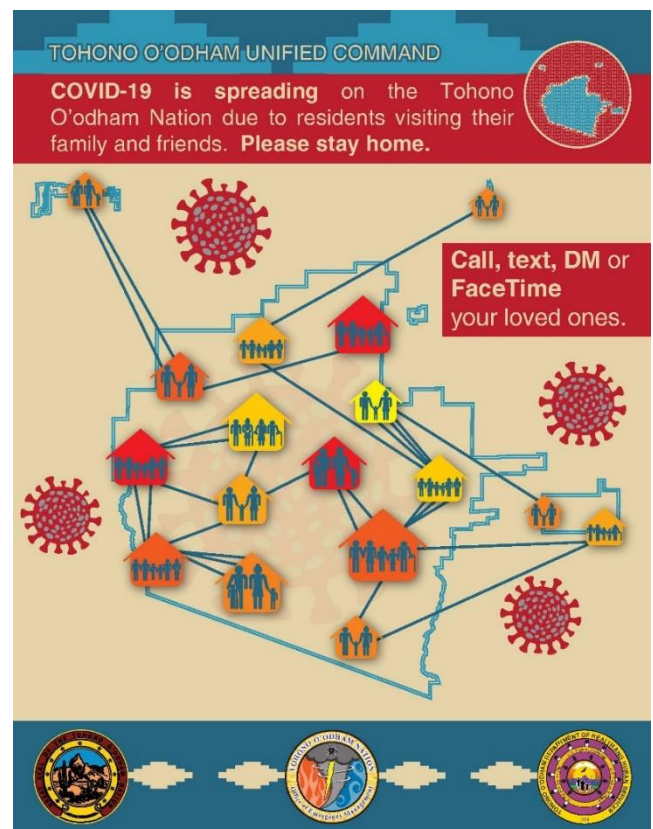
Please note testing criteria is accurate as of 9/25/2020 and may change in the future.

\*COVID-19 positive result means COVID-19 test result of “detected” for tests performed at TONHC (San Xavier, San Simon, Sells, and off-site).

†Absolute change in cumulative case count is the number of cumulative cases through week 2 subtracted from the number of cumulative cases through week 1, |week2 – week1|

## Local Surge in TON in COVID-19 Cases

Daily counts COVID-19 cases in Arizona have increased after Arizona relaxed restrictions on movement and stay at home orders. Hospital bed occupancy is rising rapidly across the state, especially in ICUs. **TONHC initially detected a surge (sudden, sharp increase) in cases 6/15/2020. We continued to have COVID-19 cases increasing throughout July and August. In September we continued to have cases of COVID-19, but less than in the summer. We detected another surge (sudden, sharp increase) starting 10/26/2020.** This means there is a sudden upward trend in the number of cases. Our team strongly recommends to continue prevention measures including avoiding all unnecessary travel and gatherings. We also recommend the use of masks/cloth face coverings for all persons in public settings. Please continue to share the messaging of minimizing group contact, including neighbors and relatives not in one's own household.



**Stay at home as much as possible**



**Practice physical distancing (remaining at least 6 feet away from others)**



**Clean your hands often**

Our testing algorithms aim to identify symptomatic persons, asymptomatic persons with known potential COVID-19 exposures, and persons who will enter high-risk or congregate settings (surgery, detention, foster care, hospitalization, dorms, etc.).

**We all need to do our part and to continue to practice physical distancing and frequent hand hygiene.**

**Please share with community members:**

The best way to prevent illness is to avoid exposure to this virus. These simple actions will lessen your chances of catching COVID-19 and spreading it to others:



- Everyone should wear a mask/cloth face covering in public when physical distancing of 6 feet is not possible (except children ages less than 2 years and persons with a medical contraindication).
- Limit direct physical contact to only persons who live in the same household.
- Avoid all group activities/gatherings, even relatives if they do not live with you until further notice.
- Maintain “stay at home” behavior except for essential needs.
- Report illnesses and possible COVID-19 exposures immediately to your provider.
- Frequently wash hands with soap and water, and use alcohol-based hand sanitizer if unable to wash hands.

### **Symptoms to Monitor**



COVID-19 symptoms to monitor for: fever, chills, cough, difficulty breathing (shortness of breath), runny/stuffy nose, sore throat, headaches, fatigue, abdominal pain, vomiting, diarrhea, new loss of taste or smell. If you have any of these symptoms, please stay home and do not go to work, school, or be in public areas.

**Face Mask Guidance: All employees at TONHC must wear a surgical facemask while at work. For patients and visitors coming to TONHC, please wear your own cloth face covering upon arrival to the facility. If not available, you will be offered a facemask (if symptomatic) or cloth face covering.**

When in the community setting (when not working at TONHC) here are three key things to consider when choosing or making a cloth face coverings.



1. **Multiple Layers.** Mask effectiveness has been shown to improve when multiple layers of fabric are used.
2. **Effective Fabric.** Regarding what type of mask to wear, it has been shown that mask efficiency improves when multiple layers of fabric are used (such as high thread count cotton) and when using fabric combinations. For example, filtration efficiencies of hybrid materials (such as cotton–silk, cotton–chiffon, cotton–flannel) was >80-90%. Cotton performs better at higher weave densities (i.e., thread count). Gaps caused by improper mask fit can decrease effectiveness significantly so having a good fit is very important.
3. **Good Fit.** Gaps caused by improper mask fit can decrease effectiveness significantly so having a good fit is very important.

**Who should NOT use cloth face coverings:** children under age 2, or anyone who has trouble breathing, is unconscious, incapacitated or otherwise unable to remove the mask without assistance.

Adapted from Maricopa guidance, <https://www.maricopa.gov/5489/Protect-Yourself-and-Others>, accessed 6/18/20.



# Arizona COVID-19 School Benchmarks

## Pima County COVID-19 School Reopening Recommended Delivery Model: Virtual

The Arizona Department of Health Services (ADHS) recommends county-specific public health benchmarks to be in the moderate or minimal transmission category in all three benchmarks in order to provide hybrid (virtual and in-person) learning.

The ADHS further defines community spread levels with the three thresholds outlined below. These thresholds are consistent with the national standards set by the Coronavirus Task Force.

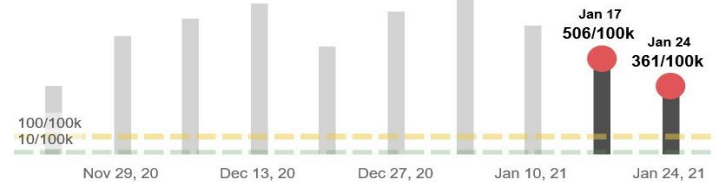
The ADHS Schools Toolkit defines community spread levels with the three thresholds outlined below:

- **CASES:** a two-week decline in the number of cases OR a two-week case rate of less than 100 cases per 100,000 population within the county;
- **PERCENT POSITIVITY:** for initial opening, two weeks of percent positivity less than 7% within the county; and
- **COVID-LIKE ILLNESS (CLI):** two weeks with hospital visits due to CLI below 10% within the region.

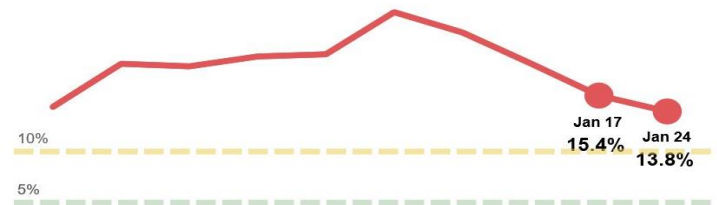
Showing data for **Pima County**  
(Southeastern Region)

Recommended Delivery Model: **Virtual**

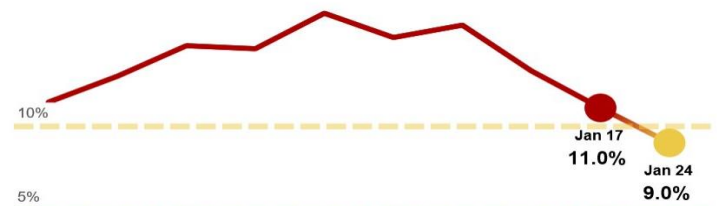
1) Cases per 100,000 individuals



2) Percent positivity



3) Hospital visits for COVID-like illnesses in the region



Benchmarks	Minimal	Moderate	Substantial
Cases	<10 cases/100,000	10-100 cases/100,000	>100 cases/100,000
Percent Positivity	<5%	5-10%	>10%
COVID-like Illness	<5%	5-10%	>10%

Arizona Department of Health Services, <https://www.azdhs.gov/preparedness/epidemiology-disease-control/infectious-disease-epidemiology/index.php#novel-coronavirus-schools>, accessed 8/26/20.

# COVID-19 GUIDANCE ON HOME ISOLATION

The Centers for Disease Control and Prevention (CDC), the Arizona Department of Health Services, and Tohono O'odham Nation Health Care updated guidance on home isolation. Accumulating evidence supports ending isolation and precautions for persons with COVID-19 using a symptom-based strategy. Researchers have reported that people with mild to moderate COVID-19 remain infectious no longer than 10 days after their symptoms began, and those with more severe illness or those who are severely immunocompromised remain infectious no longer than 20 days after their symptoms began. Therefore, CDC has updated the recommendations for discontinuing home isolation.

## **If you tested positive for COVID-19, you need to stay in ISOLATION:**

- If you tested positive for COVID-19 or are waiting for results, you should be in **isolation**. Isolation means you need to stay away from others as much as possible. You should stay in a specific "sick room," if possible, and away from other people in your home.
- If you cannot separate from others at home, you should wear a mask.
- Do not attend work, school, be in public areas, or use public transportation.
- Do not share household items like dishes, cups, eating utensils, and bedding.
- Cover coughs and sneezes with a tissue or your elbow. Throw away used tissues in the trash and wash your hands.
- Avoid touching your eyes, nose, and mouth.
- Wash your hands often with soap and warm water for at least 20 seconds.
- Clean high-touch surfaces (tables, doorknobs, light switches, countertops, handles, desks, phones, keyboards, toilets, etc.) daily.
- Reschedule all non-essential medical appointments.
- If you need medical care, call your provider **before going**, and tell them about your illness.

## **The number of days you should isolate at home depends on your SYMPTOMS, how SICK you were, and whether you are SEVERELY IMMUNOCOMPROMISED.**

Please **look at the chart on the back of this sheet** to help you figure out how long you should stay isolated at home.

- 1) If you **had any symptoms** consistent with COVID-19 **and** had **mild or moderate illness**, you should isolate at home until:
  - At least **10 days** have passed since your symptoms first started **and**
  - At least 24 hours have passed since your fever resolved (without the use of medication) **and**
  - Your other symptoms have improved.
- 2) If you **had any symptoms** consistent with COVID-19 **and** had **severe or critical illness** **or** are **severely immunocompromised**, you should isolate at home until:
  - At least **20 days** have passed since your symptoms first started **and**
  - At least 24 hours have passed since your fever resolved (without the use of medication) **and**
  - Your other symptoms have improved.
- 3) If you **did not have any symptoms** consistent with COVID-19, you should isolate at home until:
  - **10 days** have passed since your first COVID-19 test was done.
- 4) If you **did not have any symptoms** consistent with COVID-19 **and** are **severely immunocompromised**, you should isolate at home until:
  - **20 days** have passed since your first COVID-19 test was done.

Contact your healthcare provider or Public Health Nursing for any questions.

CDC guidance, <https://www.cdc.gov/coronavirus/2019-ncov/hcp/disposition-in-home-patients.html>, accessed 7/29/20.

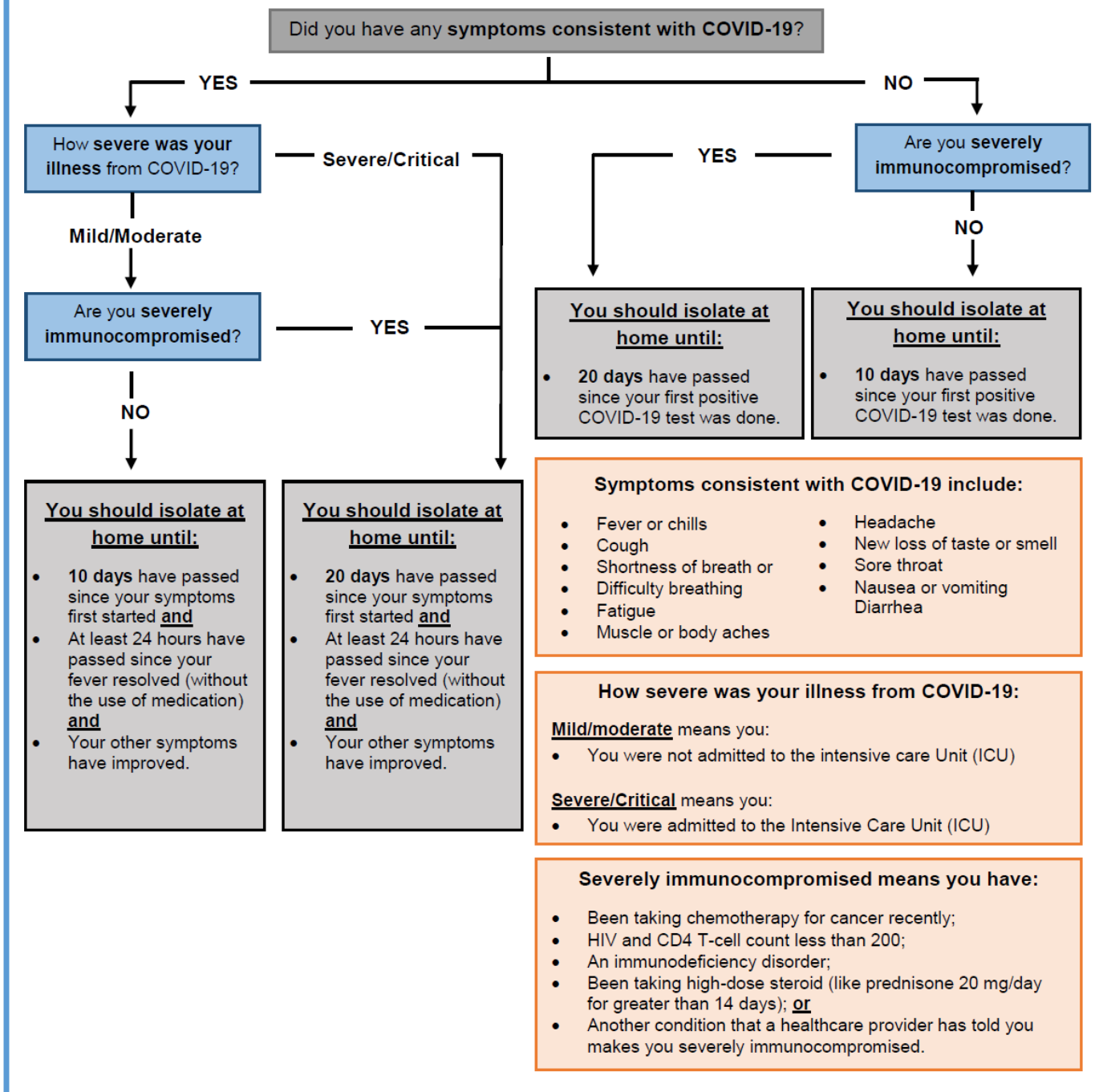
Guidance may change as new information becomes available. Please look for the most up-to-date recommendations.

## **TOHONO O'ODHAM NATION HEALTH CARE**

Updated 7/27/2020 (subject to change)



## How long should I isolate at home if I **tested positive** for COVID-19?



Guidance may change as new information becomes available. Please look for the most up-to-date recommendations.

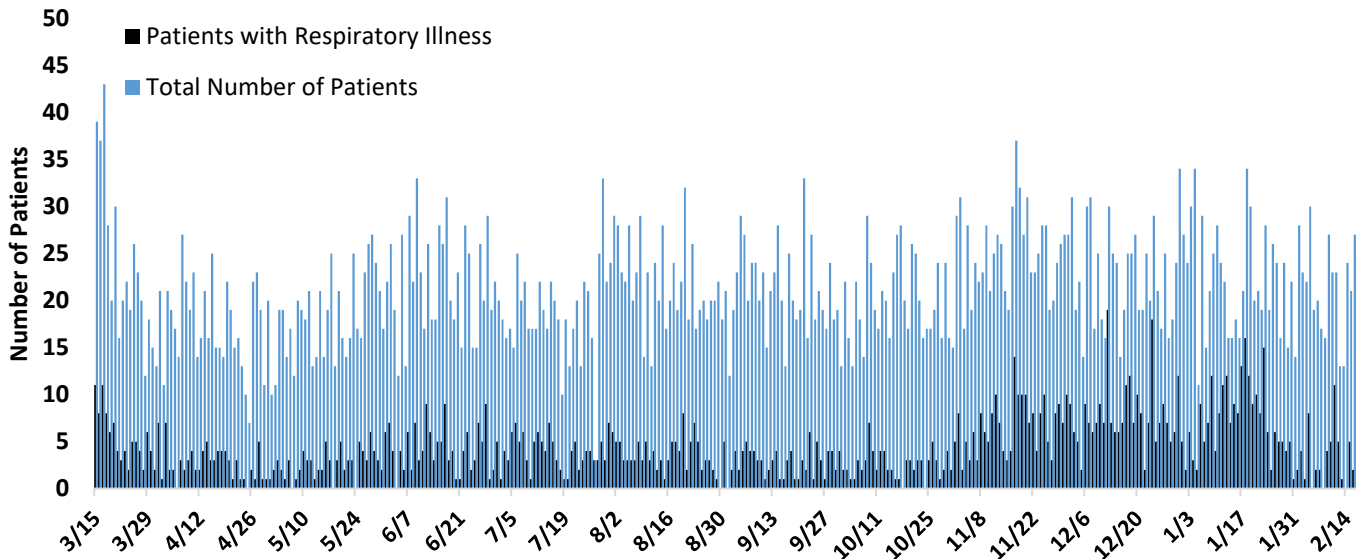
### TOHONO O'ODHAM NATION HEALTH CARE

Updated 7/27/2020 (subject to change)



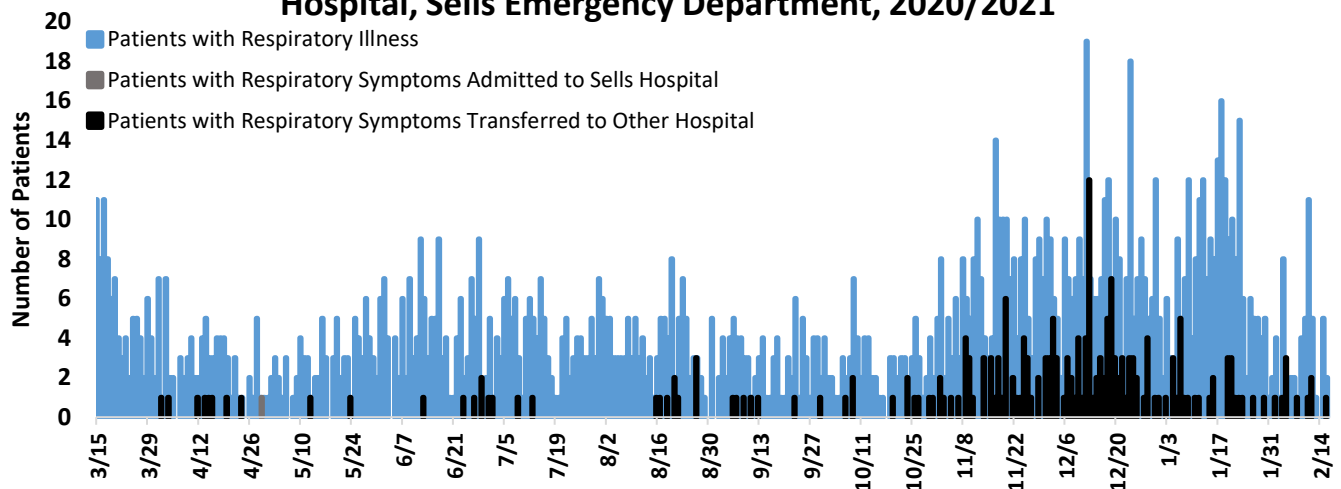
## Sells Emergency Department Syndromic Surveillance

### Patients Presenting with Respiratory Illness and Daily Totals, Sells Emergency Department, 2020/2021

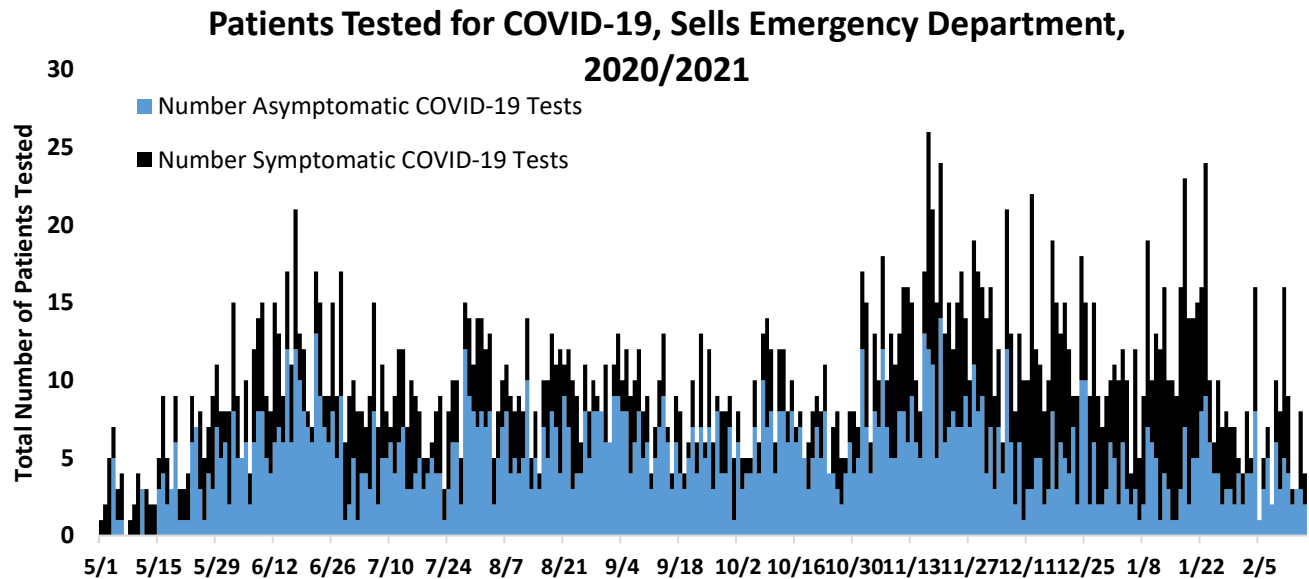


Syndromic surveillance refers to detection of indicators that are discernible before confirmed diagnoses are made. For example, an increase in the number of patients seen with respiratory symptoms could be an indicator of COVID-19. There were between 1 and 11 patients seen daily in Sells Emergency Department with respiratory symptoms during the week of 2/8/2021-2/14/2021.

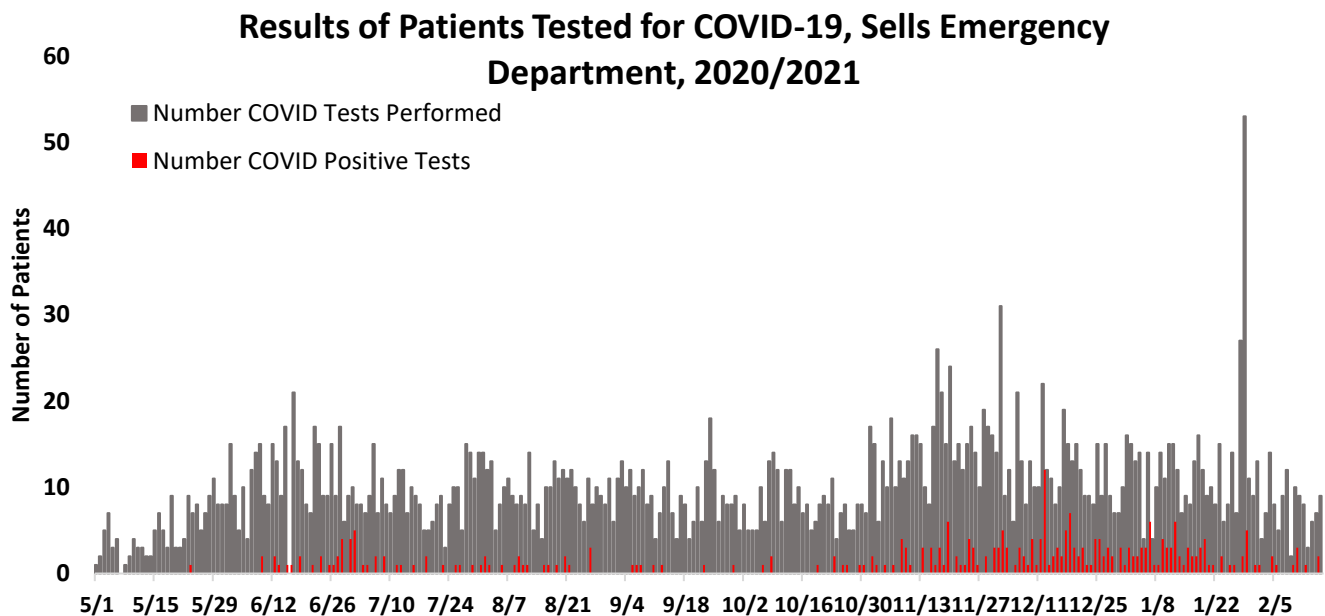
### Patients Presenting with Respiratory Illness and Number of Patients Transferred/Admitted from Emergency Department to Inpatient Hospital, Sells Emergency Department, 2020/2021



As of 2/17/2021, there were 2 admissions to Sells Hospital and 213 outside transfers for respiratory symptoms from Sells Emergency Department. The number of patients transferred from the emergency department to hospital inpatient units helps to identify severity of disease among the population. This is a level of disease severity that requires a higher level of care, such that care must be managed in the hospital (e.g. with oxygen, mechanical ventilation, etc.).



Same-day COVID-19 testing began on 4/20/20. From 2/8/21– 2/14/21, between 13 and 27 patients were seen each day in the emergency department. Asymptomatic tests are performed on people who have no symptoms (no cough, no diarrhea, no fever, etc.). Symptomatic tests refer to tests performed on people who have symptoms (cough, fever, diarrhea, etc.) of COVID-19.



The week of 2/8/21–2/14/21, 5 people seen in the emergency department tested positive for COVID-19. There have been 295 total positive test results from tests performed in Sells emergency department

The ED began administering monoclonal antibody therapy on 1/26/2021. As of 2/17/2021, 12 doses have been administered. Monoclonal antibody therapies are available through FDA EUAs for the treatment of outpatients with mild to moderate COVID-19 who are at high risk for progressing to severe disease and/or hospitalization.

TONHC Situation Update 02/17/2021 7:00

**Wear a mask, physically distance, and wash your hands to protect Tohono O'odham Nation**

## EMPLOYEE HEALTH

**All employees at TONHC must wear a procedure/surgical mask while at work. All employees in patient care areas must wear a procedure/surgical mask and eye protection. All employees in areas with patients with suspected or confirmed COVID-19 must wear N95 respirator, eye protection, gloves, and gown.**

536 TONHC employees and first responders (804 encounters) have been evaluated by employee health for respiratory symptoms related to illness or other reasons (as of 7:00 2/17/2021).

15 TONHC employees and first responders are currently sick (as of 7:00 2/17/2021).

**78 TONHC employees** tested positive for COVID-19. Each positive result has prompted an internal and external investigation and contact tracing. Based on these investigations, transmissions were more likely due to community spread. Employees possibly exposed are tested for COVID-19.

All employees are required to contact Employee Health with any call-outs. This is to ensure that employees are tested for COVID-19 if sick or exposed and given appropriate guidance on when to return to work. Employees are also required to contact their supervisor when they call out.

## TONHC Infection Control

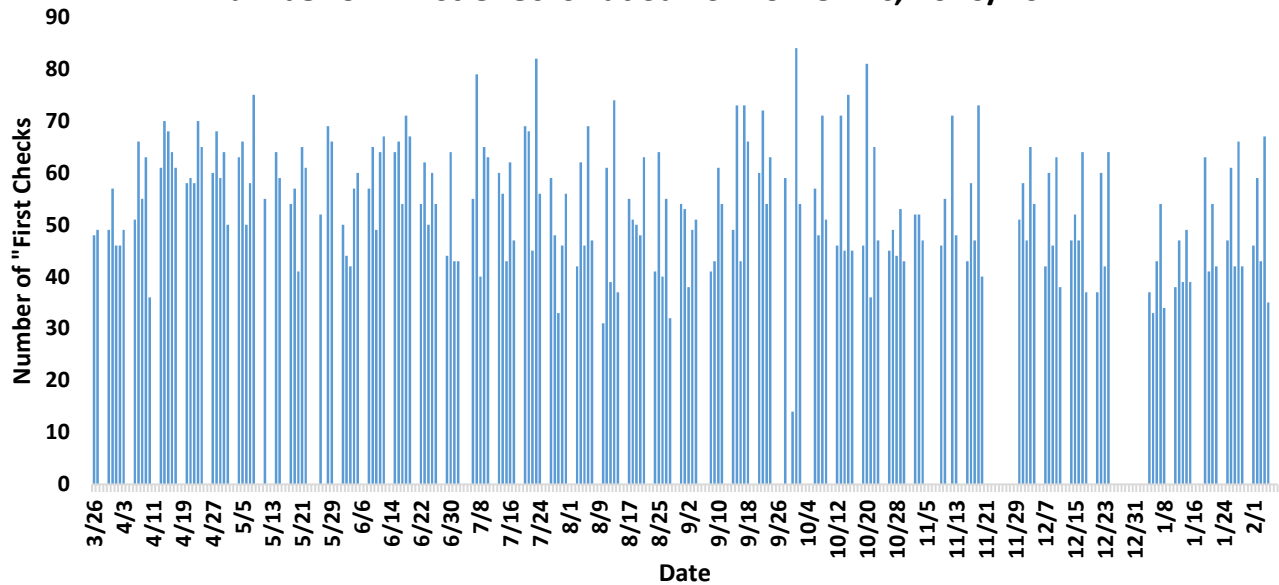
Infection control prevents or stops the spread of infections in healthcare settings. TONHC COVID-19 infection control team monitors, tracks, and provides guidance on personal protective equipment (PPE such as gowns, gloves, face shields, N95 respirators).

- At the San Xavier, Sells, and San Simon Health Care Centers, the Battelle CCDS Critical Care Decontamination System™ is being used to decontaminate N95 respirators using concentrated, vapor phase hydrogen peroxide (Emergency Use Authorization (EUA) issued by US Food and Drug Administration (FDA)).
- All staff are wearing procedure/surgical masks, and staff caring for patients are also wearing eye protection.
- Staff caring for patients that have or may have been exposed to COVID-19 are wearing gowns, gloves, face shields or other eye protection, and N95 respirators or Powered Air Purifying Respirators (PAPRs).



## CLINIC – SAN SIMON

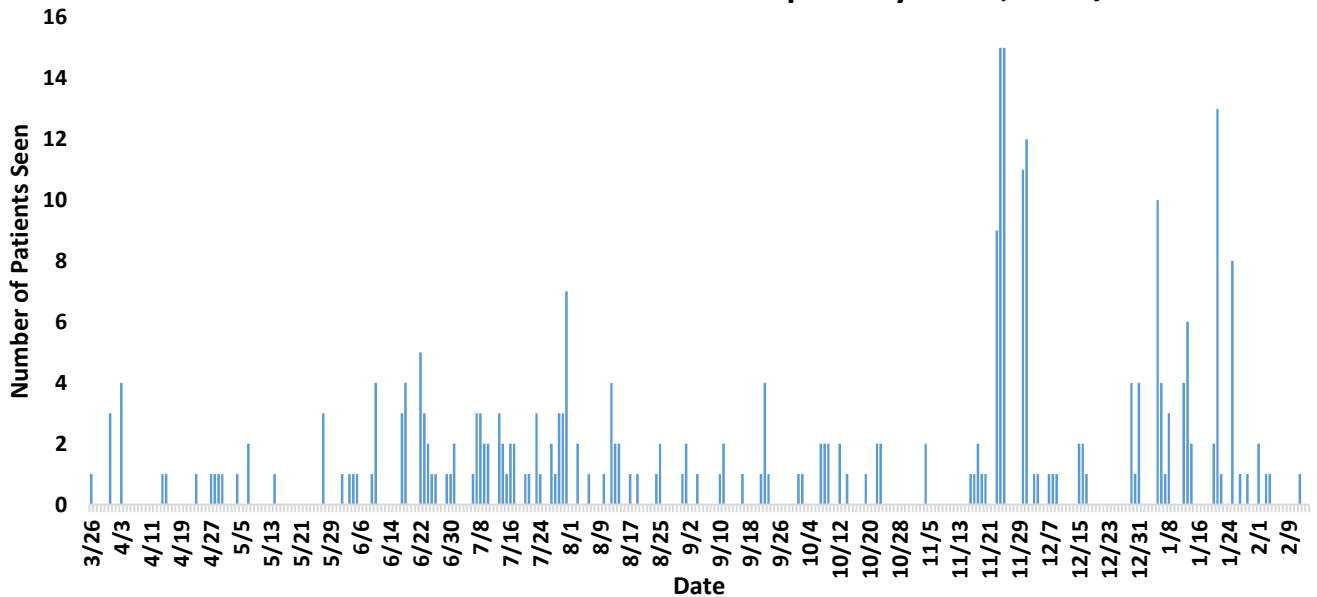
Number of "First Checks" at San Simon Clinic, 2020/2021



Some data is missing the month of December

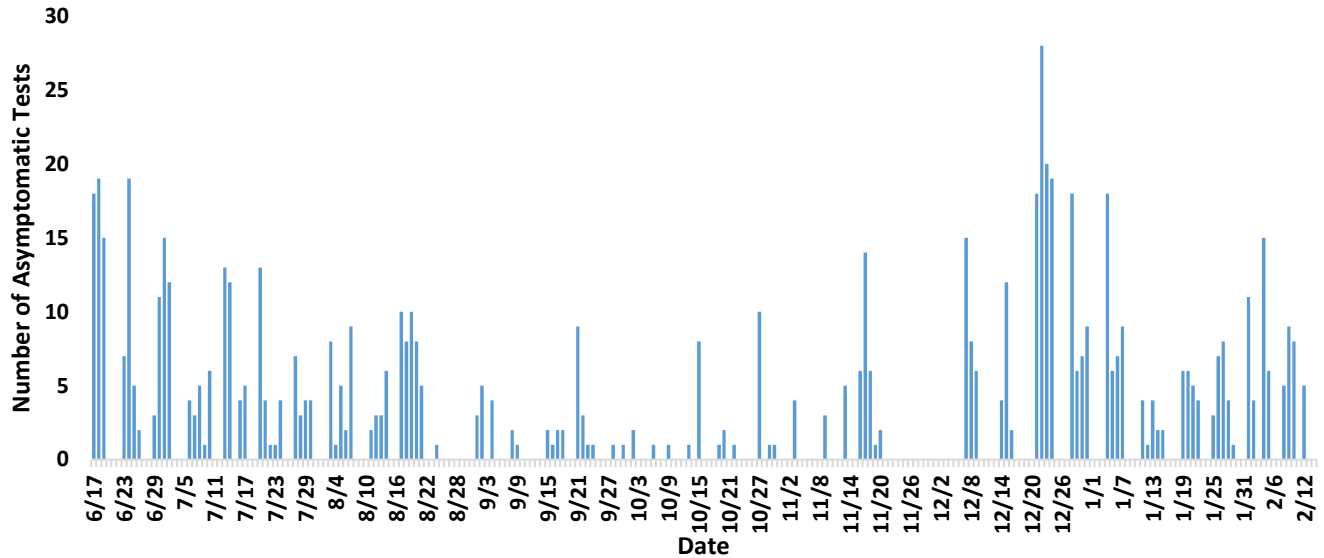
A "first check" involves asking questions about loss of smell or taste, sore throat, fever, cough, and/or difficulty breathing when anyone is entering the clinic or hospital grounds. First checks include employees and patients. As first checks are with entry, they occur multiple times per day for some people. The number of first checks is the number of times questions of respiratory symptoms were asked.

Number of Patients seen at San Simon Respiratory Clinic, 2020/2021



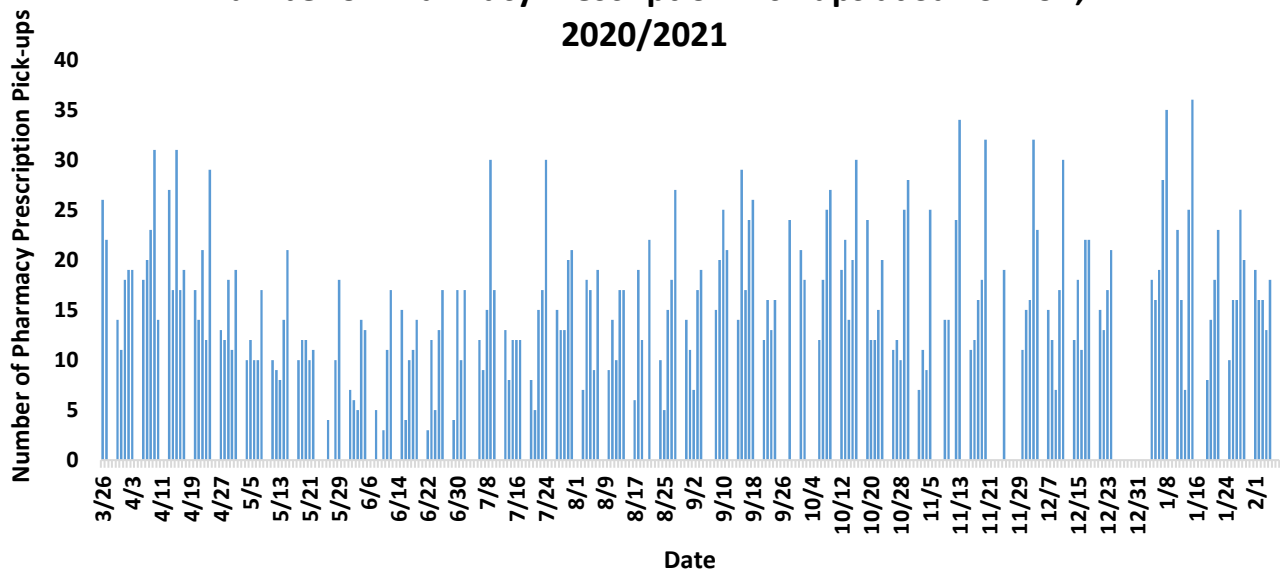
Two patients from San Simon Clinic were admitted to the hospital for respiratory symptoms.

## Number of COVID-19 Asymptomatic Tests Performed at San Simon, 2020/2021



These are the number of tests for COVID-19 performed on patients that have no symptoms of COVID-19 (no fever, no cough, no difficulty breathing, etc.), or patients who are symptomatic but only desire to be tested. They are performed on people who may have had exposure to COVID-19, are entering a congregate setting, or are going to be admitted to the hospital.

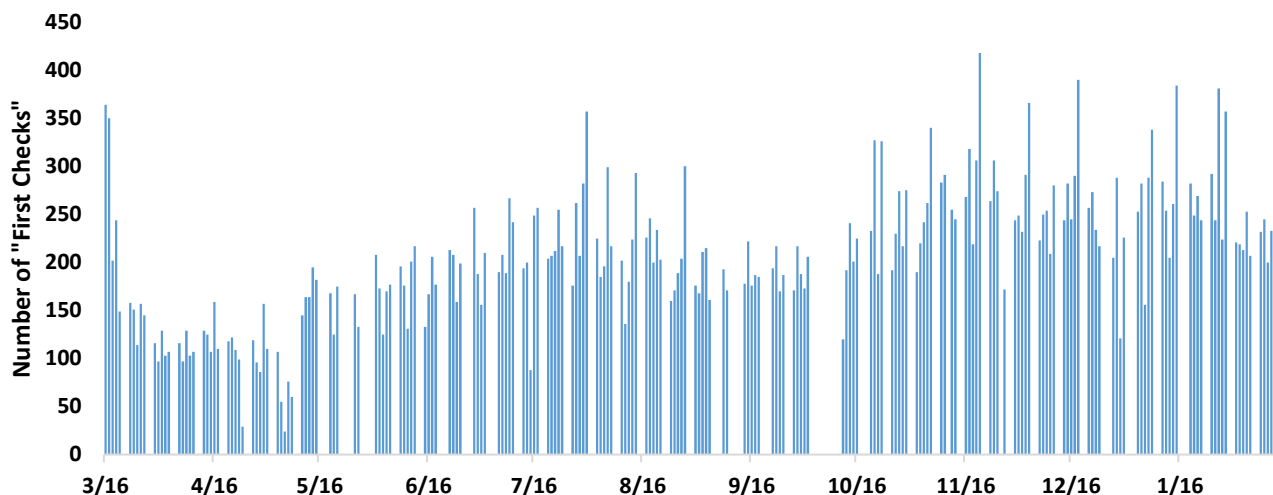
## Number of Pharmacy Prescription Pick-ups at San Simon, 2020/2021



Some data are missing the month of December

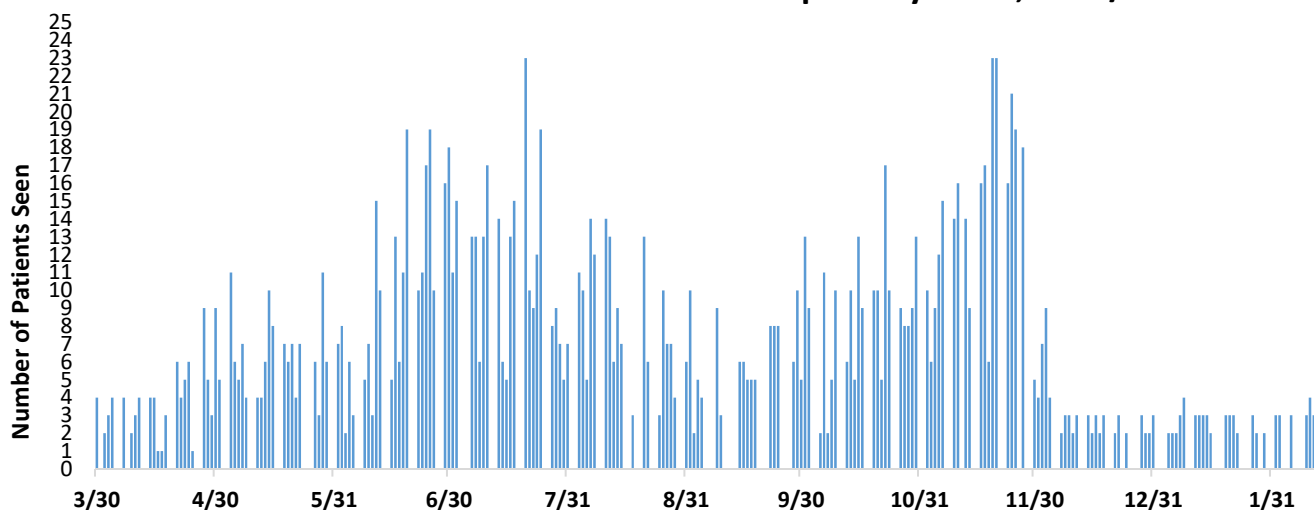
## CLINIC – SAN XAVIER

### Number of "First Checks" at San Xavier Clinic, 2020/2021



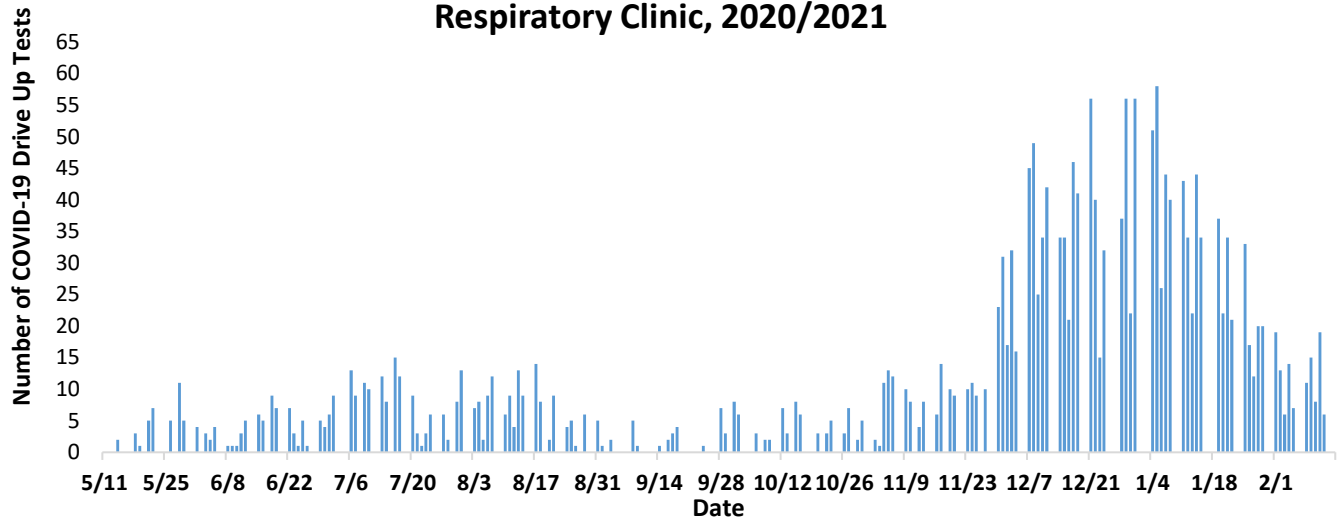
Some data are missing the month of October

### Number of Patients seen at San Xavier Respiratory Clinic, 2020/2021



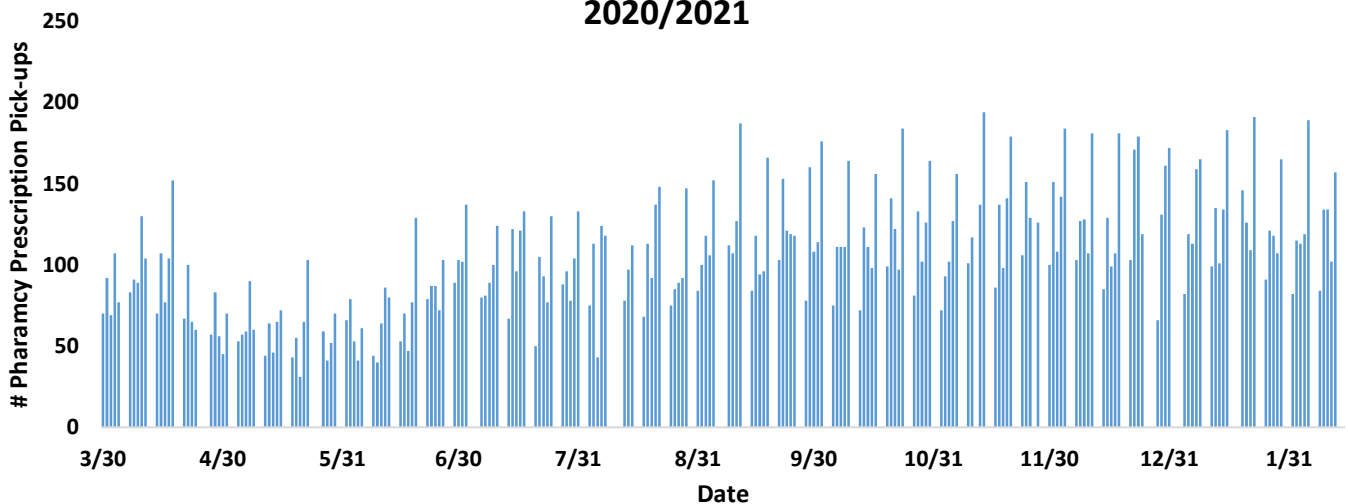
16 patients were seen in the same day respiratory clinic and transported to the hospital from San Xavier clinic.

### Number of Drive Up COVID-19 Tests Performed at San Xavier Respiratory Clinic, 2020/2021



Drive-Up testing includes both symptomatic and asymptomatic patients, with testing for symptomatic patients beginning in November at San Xavier Clinic. Asymptomatic testing is for patients that have no symptoms of COVID-19 (no fever, no cough, no difficulty breathing, etc.). They are performed on people who may have had exposure to COVID-19, are entering a congregate setting, or are going to be admitted to the hospital. Patients who have COVID-19 symptoms may be offered a drive up test instead of a Respiratory Clinic visit.

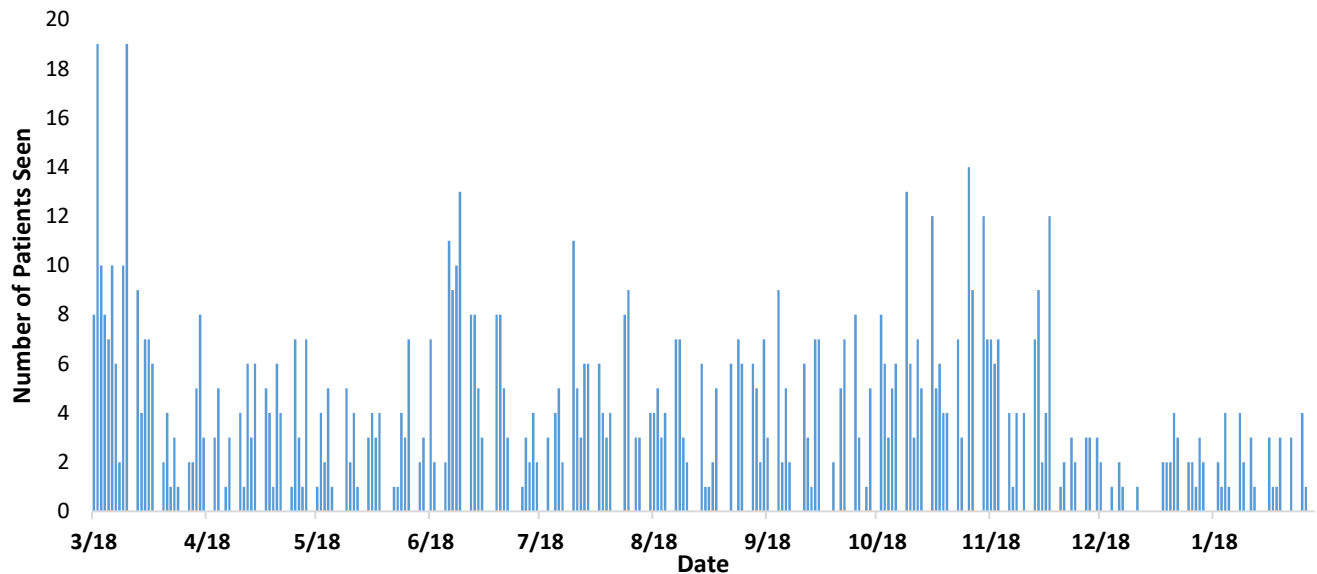
### San Xavier Clinic Number of Pharmacy Prescription Pick-ups, 2020/2021



## CLINIC – SELLS

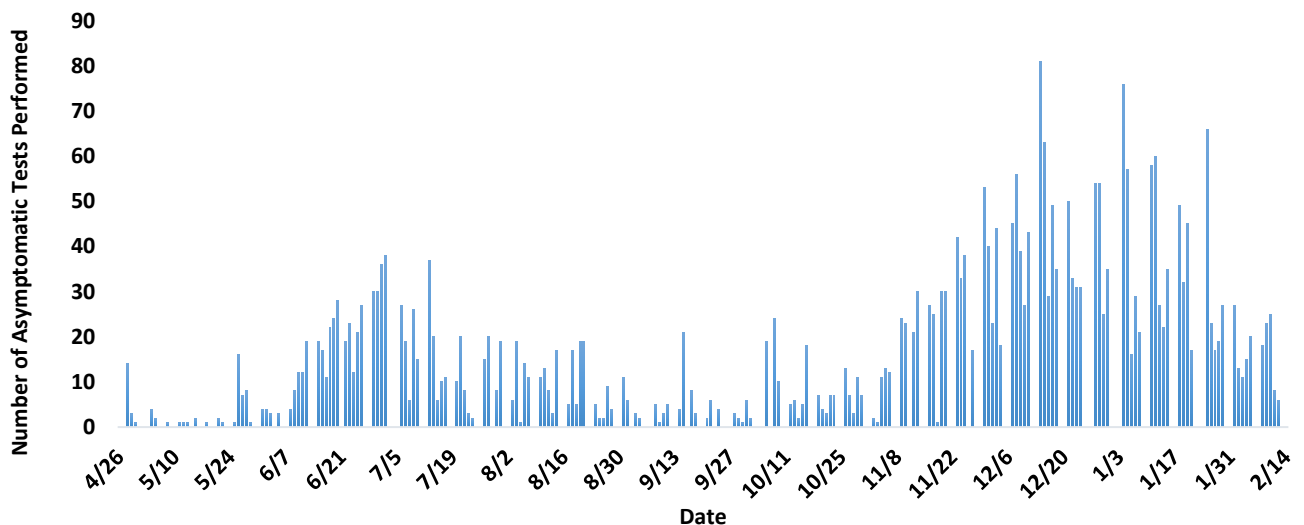
As of November 5, 2020, Sells Hospital has transitioned to asking questions about COVID-19 symptoms as patients enter the clinics/hospital instead of first check at the parking lot entrance. Protocols have been created to ensure all patients and employees are checked at designated areas before entering clinics/hospital building. These include temperature checks and asking about COVID-19 symptoms.

### Number of Patients seen at Sells Respiratory Clinic, 2020/2021

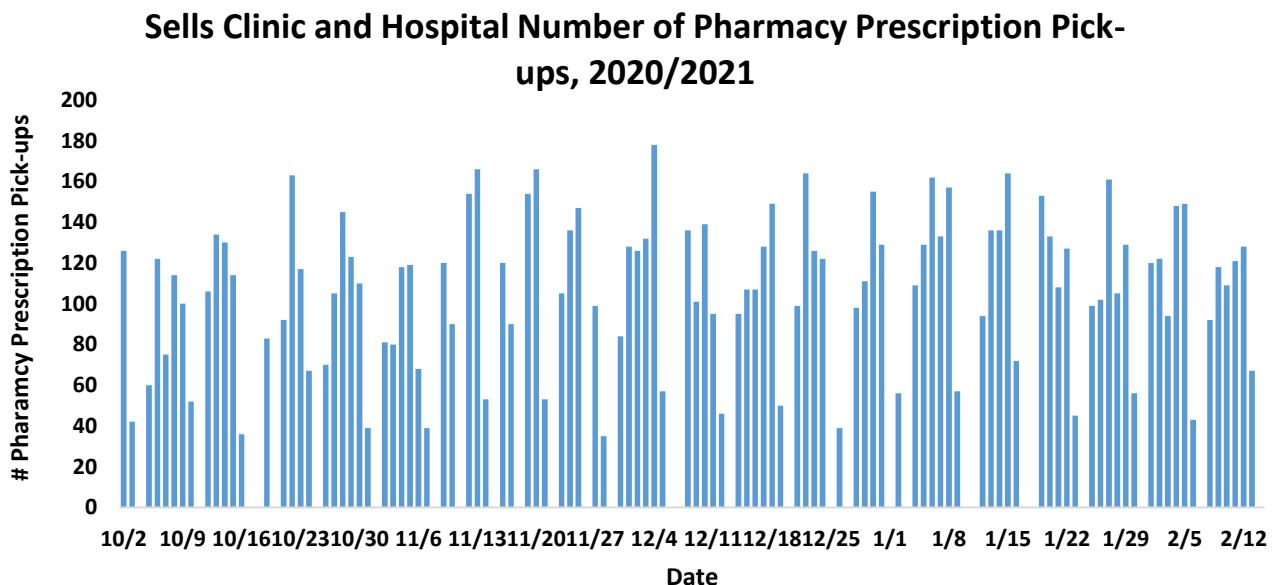


15 patients seen were transferred to the emergency room, 5 patients were directly admitted to the hospital. 3/21/20 and 3/22/20 included patients seen in the emergency department.

### Number of Drive-Up COVID-19 Tests Performed at Sells Clinic, 2020/2021



Drive-Up testing includes both symptomatic and asymptomatic patients, with testing for symptomatic patients beginning on 11/23/2020 at Sells Hospital. Asymptomatic testing is for patients that have no symptoms of COVID-19 (no fever, no cough, no difficulty breathing, etc.). They are performed on people who may have had exposure to COVID-19, are entering a congregate setting, or are going to be admitted to the hospital. Patients who have COVID-19 symptoms may be offered a drive up test instead of a Respiratory Clinic visit.



## SELLS INPATIENT UNIT

To minimize possible exposure and conserve personal protective equipment, visitors are not allowed on the inpatient wards. Exceptions are for a minor, woman in labor, and special circumstances. In accordance with state enhanced surveillance advisory related to COVID-19, daily information has been reported to Arizona State using EMResource.

5 patients were admitted to Sells Hospital who tested positive for COVID-19. Inpatient, in-hospital transportation, and postmortem protocols have been developed. Every patient admitted to the inpatient unit of Sells hospital is tested for COVID-19.

Med/Surge Bed Availability – 10 (2/17/2021)

Med/Surge Bed Capacity – 14, with 5 additional beds available if needed for emergency situations

No intensive care unit services

Negative Pressure Rooms – 2 inpatient rooms, 1 in emergency department (inpatient rooms are used by emergency department or other clinics when indicated).

For all transfers outside of TONHC we are calling the Arizona Surge Line. The Arizona Surge Line is a 24/7 toll-free statewide system activated 4/22/20 to keep hospitals and regions of Arizona from being overwhelmed by facilitating COVID-19 patient admission, transfer, and discharge to appropriate levels of care.

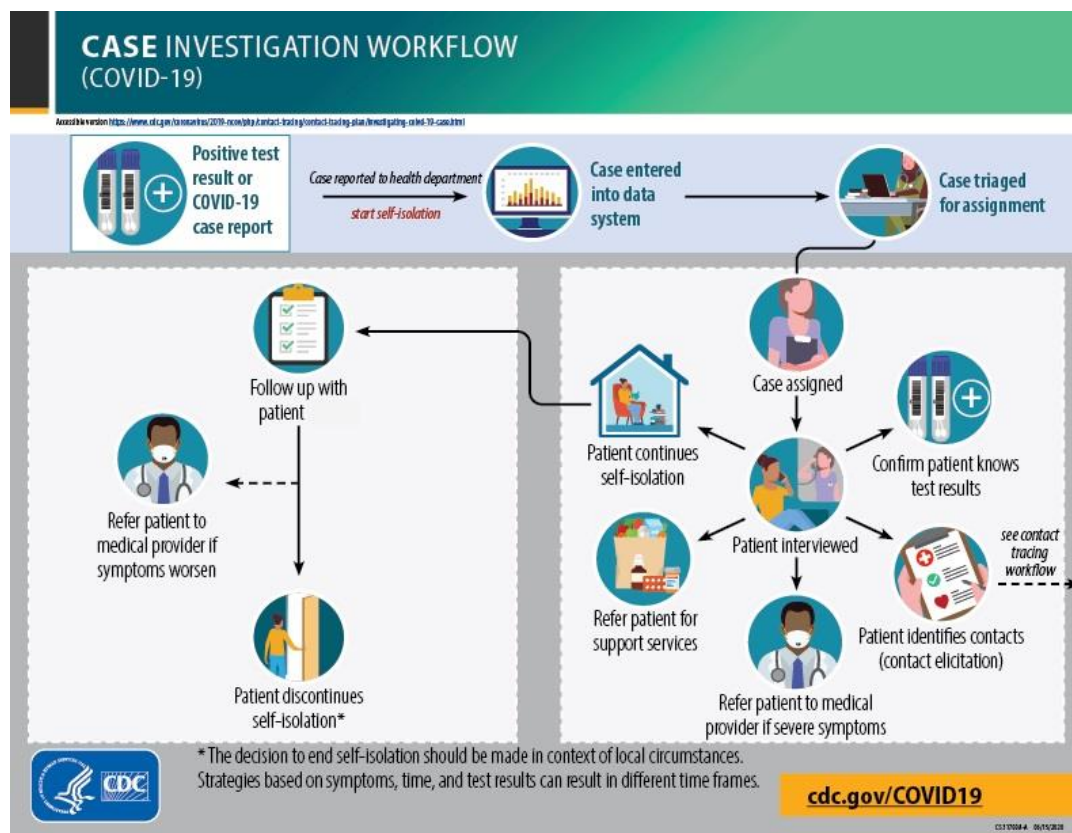


In preparation, our outpatient clinic staff has been cross-trained in inpatient patient care. To date we have trained 16 member of the healthcare workforce to manage patients in the hospital setting. Cross training will allow us to increase the number of patients we can take care of on the inpatient unit. Please note that Sells hospital is not an intensive care unit, so we cannot take care of patients with COVID-19 requiring intensive respiratory treatment. These patients are transferred to intensive care units at other sites.

## PUBLIC HEALTH NURSING – CONTACT TRACING

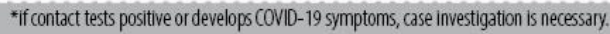
As of 2/17/21 at 7:00, **3,647** individual contact tracings have occurred in the Tohono O'odham Nation.

TONHC public health nursing conducts case investigation and contact tracing (involves interviewing). Case investigations are initiated on everyone who tests positive for COVID-19.



Contact tracing, a core disease control measure, is a key strategy for preventing further spread of COVID-19. Contact tracing is part of the process of supporting patients with suspected or confirmed infection. In contact tracing, public health nursing works with patients to help them recall everyone with whom they have had close contact during the timeframe in which they may have been infectious. To protect patient privacy, contacts are only informed that they may have been exposed to a patient with the infection. They are not told the identity of the patient who may have exposed them. Contacts are provided with education, information, and support to understand their risk, what they should do to separate themselves from others who are not exposed, how to monitor themselves for illness, and the possibility that they could spread the infection to others even if they themselves do not feel ill.

**Accession number** <https://www.ncbi.nlm.nih.gov/ncbiinfo/map-locations/genbank/genbank-g/hc/blast-tracks.html>



CS-17008-A 06/15/2018



## TOHONO O'ODHAM NATION HEALTH CARE

Sells Hospital | P.O. Box 548 - Sells, Arizona 85634

**Please Distribute Widely**

### **Phase 1C Now Eligible to Recieve COVID-19 Vaccine at TONHC**

#### **Sells Hospital and San Xavier Health Center**

Dates and times: Wednesday Feb 17, 8am-3pm  
Wednesday Feb 24, 8am-3pm  
Friday Feb 26, 8am-3pm

Limited WALK IN availability 10am-2pm (MUST bring ID)

**San Simon Health Center is offering COVID-19 vaccines by appointment only.**

Please call TONHC to schedule your COVID-19 vaccine appointment:

Sells Hospital:  
520-383-7253  
520-383-7209  
520-383-7519

San Xavier Health  
Center:  
520-295-2529  
520-295-2504  
520-295-2482  
520-295-2424  
520-295-2484  
520-295-2590  
520-295-2505

San Simon Health  
Center:  
520-362-7098  
520-362-7078

**ELIGIBILITY CRITERIA: COVID-19 Vaccine supply is still limited. At this time, TONHC can offer vaccine to:**

- Members of the Tohono O'odham Nation and other tribes in the Phases 1A, 1B, and 1C. Note: for essential workers who are tribal members, their place of employment can be on or off the Tohono O'odham Nation.
- Persons who are not tribal members who either work or live on the Tohono O'odham Nation, AND fall into one of the eligible groups below.

#### **Phase 1A and Phase 1B:**

- Members of the Tohono O'odham Nation and other tribes, age 55 years and older
- Healthcare professionals, medicine men and women, First Responders, Police, Fire
- Essential Government Workers: District, Legislative, Executive, and Judicial employees who have been identified as essential
- Health Transportation
- Information Technology/Cyber Security
- Utility workers: TOUA, Water/wastewater, Waste removal services
- Educators, school workers, support staff, and child care workers
- Emergency Management

TONHC Situation Update 02/17/2021 7:00

**Wear a mask, physically distance, and wash your hands to protect Tohono O'odham Nation**

- Food producers, Grocers, Fuel (ex: Basha's, Shell)
- Health and Human Services (ex: Child Welfare, Adult Protective Services, Behavioral Services, Family Assistance, Community Health, HOPP, Senior Services)
- Tucson Indian Center
- IHS Area Office
- Residents and staff of long-term care facilities
- TO Nation Executive Branch Gaming Office

#### **Phase 1C: Adults over 18 years old with:**

- Serious health conditions: diabetes, obesity, cancer, chronic kidney disease, lung disease, heart disease, transplants, immune system conditions, Down syndrome, sickle cell, smoking.
- Pregnancy and breast feeding
- Employment in a service industry or other essential work:
  - Transportation and logistics (bus drivers, drivers)
  - Food service (restaurants, vendors)
  - TON casino employees
  - Housing, construction, electricians, plumbers, other service trades
  - Finance
  - Communications, media
  - Law, public safety, security
  - Public health
  - Library

#### **Helpful Tips for your Vaccine Visit:**

- Wear a mask to cover your nose and mouth.
- Wear a short sleeve shirt under your coat. **Dress for the weather.**
- Bring your photo ID, tribal ID, Employee ID as appropriate.
- Essential workers please bring a letter from your supervisor stating essential status if you do not clearly belong to one of the specific groups mentioned above.
- Bring your insurance card. Vaccine is free.
- If you feel ill or you are experiencing COVID-19 symptoms on the day of your vaccine appointment, please do NOT come to be vaccinated. Please call TONHC at one of the scheduling lines listed above and schedule a COVID-19 Test.
- TONHC has Moderna Vaccine. If you have previously received a different brand of COVID-19 vaccine outside of TONHC, it is recommended that you receive that same brand for Dose #2.

**Thank You and Stay Safe!**

## APPENDIX

### Confirmed COVID-19 Cases and Absolute Change among Enrolled Tohono O'odham Nation Members by Week, 2020

Week (2020)	Cumulative COVID-19 Cases Among Enrolled Tohono O'odham Tribal Members	Absolute Change <sup>s</sup> in Cumulative Case Counts from Previous Week
June 24 <sup>th</sup> – June 30 <sup>th</sup>	189	
July 1 <sup>st</sup> – July 7 <sup>th</sup>	241	52
July 8 <sup>th</sup> – July 14 <sup>th</sup>	297	56
July 15 <sup>th</sup> – July 21 <sup>st</sup>	320	23
July 22 <sup>nd</sup> – July 28 <sup>th</sup>	363	43
July 29 <sup>th</sup> – August 4 <sup>th</sup>	415	52
August 5 <sup>th</sup> – August 11 <sup>th</sup>	456	41
August 12 <sup>th</sup> – August 18 <sup>th</sup>	486	30
August 19 <sup>th</sup> – August 25 <sup>th</sup>	498	12
August 26 <sup>th</sup> – September 1 <sup>st</sup>	508	10
September 2 <sup>nd</sup> – September 8 <sup>th</sup>	509	1
September 9 <sup>th</sup> – September 15 <sup>th</sup>	535	26
September 16 <sup>th</sup> – September 22 <sup>nd</sup>	543	8
September 23 <sup>rd</sup> – September 29 <sup>th</sup>	545	2
September 30 <sup>th</sup> – October 6 <sup>th</sup>	547	2
October 7 <sup>th</sup> – October 13 <sup>th</sup>	555	8
October 14 <sup>th</sup> – October 20 <sup>th</sup>	564	9
October 21 <sup>st</sup> – October 27 <sup>th</sup>	586	22
October 28 <sup>th</sup> – November 3 <sup>rd</sup>	598	12
November 4 <sup>th</sup> – November 10 <sup>th</sup>	630	32
November 11 <sup>th</sup> – November 17 <sup>th</sup>	681	51
November 18 <sup>th</sup> – November 24 <sup>th</sup>	734	53
November 25 <sup>th</sup> – December 1 <sup>st</sup>	802	68
December 2 <sup>nd</sup> – December 8 <sup>th</sup>	881	79
December 9 <sup>th</sup> – December 15 <sup>th</sup>	1005	124
December 16 <sup>th</sup> – December 22 <sup>nd</sup>	1088	83
December 23 <sup>rd</sup> – December 29 <sup>th</sup>	1171	83
December 30 <sup>th</sup> – January 5 <sup>th</sup>	1297	126
January 6 <sup>th</sup> – January 12 <sup>th</sup>	1416	119
January 13 <sup>th</sup> – January 19 <sup>th</sup>	1513	97
January 20 <sup>th</sup> – January 26 <sup>th</sup>	1614	101
January 27 <sup>th</sup> – February 2 <sup>nd</sup>	1653	39
February 3 <sup>rd</sup> – February 9 <sup>th</sup>	1689	36
February 10 <sup>th</sup> – February 16 <sup>th</sup>	1711	22

**Confirmed COVID-19 Cases and Absolute Change among Enrolled Tohono O'odham Nation Members Residing within the Tohono O'odham Nation by Week, 2020**

<b>Week (2020)</b>	<b>Cumulative COVID-19 Cases Among Enrolled Tohono O'odham Tribal Members Residing within the Tohono O'odham Nation Boundary</b>	<b>Absolute Change<sup>s</sup> in Cumulative Case Counts from Previous Week</b>
June 24 <sup>th</sup> – June 30 <sup>th</sup>	82	
July 1 <sup>st</sup> – July 7 <sup>th</sup>	106	24
July 8 <sup>th</sup> – July 14 <sup>th</sup>	148	42
July 15 <sup>th</sup> – July 21 <sup>st</sup>	168	20
July 22 <sup>nd</sup> – July 28 <sup>th</sup>	193	25
July 29 <sup>th</sup> – August 4 <sup>th</sup>	227	34
August 5 <sup>th</sup> – August 11 <sup>th</sup>	256	29
August 12 <sup>th</sup> – August 18 <sup>th</sup>	285	29
August 19 <sup>th</sup> – August 25 <sup>th</sup>	294	9
August 26 <sup>th</sup> – September 1 <sup>st</sup>	299	5
September 2 <sup>nd</sup> – September 8 <sup>th</sup>	303	4
September 9 <sup>th</sup> – September 15 <sup>th</sup>	328	25
September 16 <sup>th</sup> – September 22 <sup>nd</sup>	337	9
September 23 <sup>rd</sup> – September 29 <sup>th</sup>	337	0
September 30 <sup>th</sup> – October 6 <sup>th</sup>	338	1
October 7 <sup>th</sup> – October 13 <sup>th</sup>	346	8
October 14 <sup>th</sup> – October 20 <sup>th</sup>	350	4
October 21 <sup>st</sup> – October 27 <sup>th</sup>	360	10
October 28 <sup>th</sup> – November 3 <sup>rd</sup>	371	11
November 4 <sup>th</sup> – November 10 <sup>th</sup>	400	29
November 11 <sup>th</sup> – November 17 <sup>th</sup>	433	33
November 18 <sup>th</sup> – November 24 <sup>th</sup>	480	47
November 25 <sup>th</sup> – December 1 <sup>st</sup>	529	49
December 2 <sup>nd</sup> – December 8 <sup>th</sup>	583	54
December 9 <sup>th</sup> – December 15 <sup>th</sup>	675	92
December 16 <sup>th</sup> – December 22 <sup>nd</sup>	733	58
December 23 <sup>rd</sup> – December 29 <sup>th</sup>	782	49
December 30 <sup>th</sup> – January 5 <sup>th</sup>	866	84
January 6 <sup>th</sup> – January 12 <sup>th</sup>	952	86
January 13 <sup>th</sup> – January 19 <sup>th</sup>	1020	68
January 20 <sup>th</sup> – January 26 <sup>th</sup>	1101	81
January 27 <sup>th</sup> – February 2 <sup>nd</sup>	1128	27
February 3 <sup>rd</sup> – February 9 <sup>th</sup>	1155	27
February 10 <sup>th</sup> – February 16 <sup>th</sup>	1169	14

Changes due to added cases and reclassification of residence



### TONHC COVID-19 Positive Test Results and Absolute Change by Week, 2020

Week (2020)	TONHC Cumulative Positive COVID-19 Test Results	Absolute Change <sup>†</sup> in Positive Test Results from Previous Week
June 24 <sup>th</sup> – June 30 <sup>th</sup>	153	
July 1 <sup>st</sup> – July 7 <sup>th</sup>	202	49
July 8 <sup>th</sup> – July 14 <sup>th</sup>	251	49
July 15 <sup>th</sup> – July 21 <sup>st</sup>	278	27
July 22 <sup>nd</sup> – July 28 <sup>th</sup>	302	24
July 29 <sup>th</sup> – August 4 <sup>th</sup>	342	40
August 5 <sup>th</sup> – August 11 <sup>th</sup>	382	40
August 12 <sup>th</sup> – August 18 <sup>th</sup>	403	21
August 19 <sup>th</sup> – August 25 <sup>th</sup>	416	13
August 26 <sup>th</sup> – September 1 <sup>st</sup>	426	10
September 2 <sup>nd</sup> – September 8 <sup>th</sup>	431	5
September 9 <sup>th</sup> – September 15 <sup>th</sup>	444	13
September 16 <sup>th</sup> – September 22 <sup>nd</sup>	445	1
September 23 <sup>rd</sup> – September 29 <sup>th</sup>	447	2
September 30 <sup>th</sup> – October 6 <sup>th</sup>	449	2
October 7 <sup>th</sup> – October 13 <sup>th</sup>	457	8
October 14 <sup>th</sup> – October 20 <sup>th</sup>	464	7
October 21 <sup>st</sup> – October 27 <sup>th</sup>	487	23
October 28 <sup>th</sup> – November 3 <sup>rd</sup>	505	18
November 4 <sup>th</sup> – November 10 <sup>th</sup>	549	44
November 11 <sup>th</sup> – November 17 <sup>th</sup>	604	55
November 18 <sup>th</sup> – November 24 <sup>th</sup>	667	63
November 25 <sup>th</sup> – December 1 <sup>st</sup>	725	58
December 2 <sup>nd</sup> – December 8 <sup>th</sup>	824	99
December 9 <sup>th</sup> – December 15 <sup>th</sup>	962	138
December 16 <sup>th</sup> – December 22 <sup>nd</sup>	1066	104
December 23 <sup>rd</sup> – December 29 <sup>th</sup>	1148	82
December 30 <sup>th</sup> – January 5 <sup>th</sup>	1276	128
January 6 <sup>th</sup> – January 12 <sup>th</sup>	1409	133
January 13 <sup>th</sup> – January 19 <sup>th</sup>	1497	88
January 20 <sup>th</sup> – January 26 <sup>th</sup>	1584	87
January 27 <sup>th</sup> – February 2 <sup>nd</sup>	1630	46
February 3 <sup>rd</sup> – February 9 <sup>th</sup>	1664	34
February 10 <sup>th</sup> – February 16 <sup>th</sup>	1689	25



# Tohono O'odham Nation: Leadership Update 53

## Unified Command

### Current and Planned Objectives:

- Operational teams to support COVID-19 response efforts and activities will be identified for activation and sustainment thru COVID surge.
- Maintain responsibility of PPE resource management by acquiring and distributing resources and assets.
- Maintain Alternate Care Site(s) (ACS) capability to include personnel, facilities, and wrap-around services for COVID-19 positive patients. Low level medical needs.
- Reactivate Community Lifeline(s) to support most vulnerable populations through COVID surge.
- Continue to deliver consistent community messaging and information for leadership and all stakeholders.
- Continue to monitor activity and workload of task forces/workgroups to perform gap analysis, resource assessment, contingency planning, partner outreach, and other tasks as required
- Maintain global, national, and state situational awareness of COVID-19 outbreak impacts and any surge in cases that might come from the border environment.
- Integrate best practices and up-to-date safety guidance for the first responder community, healthcare/medical community, supporting personnel, and stakeholders
- Maintain an up-to-date financial and cost analysis of incident-related expenditures and provide updates to senior leadership

### Command Emphasis:

- Fatigue and burnout is a concern for personnel that have been activated over the last 9.5 months. Team Leaders and Command Staff will actively monitor.
- We will scale up resources and personnel to ensure span of control.
- Continue to maintain resources at a ready-state for support of healthcare preparedness activities in COVID surge.
- Forward leaning approach for plans, capabilities, and efforts during COVID surge.
- Maintain information sharing and resource management coordination among key stakeholders.
- Continue coordinated and synchronized public messaging regarding COVID-19 and Influenza. Keep the audiences tuned in.
- The Unified Command will continue to coordinate with external partners and agencies to achieve operational objectives.
- Ensure all orders for PPE requests are synchronized, tracked and distributed. EOC resource orders must be submitted using a 213-RR and submitted via [eoc@tonation-nsn.gov](mailto:eoc@tonation-nsn.gov)
- Integrate additional stakeholders to operational briefings with the intent to foster a common operating picture and enhance working partnerships
- Maintain COVID-19 situational awareness of impacts, response actions, and gap analysis for effective support
- The Unified Command must acknowledge and recognize sensitive political, legal, and security issues and develop strategies and or solutions to help establish: clear lines of authority, accountability procedures, personnel relief and rehabilitation, situational awareness, environmental conditions
- Keep the Policy Group and senior leadership adequately informed
- Sustain an operational battle rhythm, to include Planning P methodologies, Incident Action/Coordination/Support Planning



## Tohono O'odham Nation: Leadership Update 53

### Strategic Actions:

- TON-HC and Unified Command continue to coordinate in supporting the COVID-19 cases. UC Task Force Leader communicates with TON-HC if patient(s) need to be housed in an Alternate Care Sites.
- Unified Command Distribution Team continues in filling resource requests from approved 213-RR's.
- Unified Command Compliance Team continues to monitor the department's compliance with all required safety precautions and assist departments with implementing safety measures.
- Unified Command continues with planning efforts through the State for testing support.

### Public Information:

- Daily Stats: Social Media, web page, radio
- PSA Phase 1C Now Eligible for COVID-19 Vaccination at TONHC
- PSA Ge Oidag Quarantine – EXTENDED
- Video: COVID-19 Incubation timeline and testing
- PSA Saturday COVID-19 Vaccination Clinics
- Project: Terminology education

### State of Arizona:

**September 1, 2020** – Governor Ducey issued E.O. 2020 – 53, *Driver License Renewals for Arizonans 65 or Older Amending and Extending E.O. 2020 – 08*

**September 8, 2020** – Governor Ducey issued E.O. 2020 – 54, *Enhanced Surveillance Advisory - Monitoring The Spread of COVID-19*

**November 11, 2020** – Governor Ducey issued E.O. 2020-56 *Enhanced Surveillance Advisory - Tracking the Spread of COVID-19*

- Extending the Enhanced Surveillance Advisory Tracking of COVID-19 which was established in March under Executive Order 2020-13 an additional 60 days

**November 18, 2020** – Governor Ducey issued E.O. 2020-57 *Enhanced Surveillance Advisory - Monitoring the Administration of COVID-19 Vaccination*

### Additional Online Resources:

Arizona data: [Arizona Department of Health Services](https://azdhs.gov/)

Resilient Arizona Crisis Counseling Program: <https://resilientarizona.org/>

**Global Data:** [Center for Systems Science AZ Engineering at John Hopkins University](https://systems.jhu.edu/)

**National Guidance:** [Centers for Disease Control and Prevention](https://www.cdc.gov/)

The COVID-19 Hotline 2-1-1: [211arizona.org](https://211arizona.org/)

Resources for Arizonans: <https://arizonatogether.org/>

AZ Executive Orders (COVID-19): [Arizona Executive Orders](https://www.azlegis.gov/)



## Tohono O'odham Nation: Leadership Update 53

### Community Lifelines:

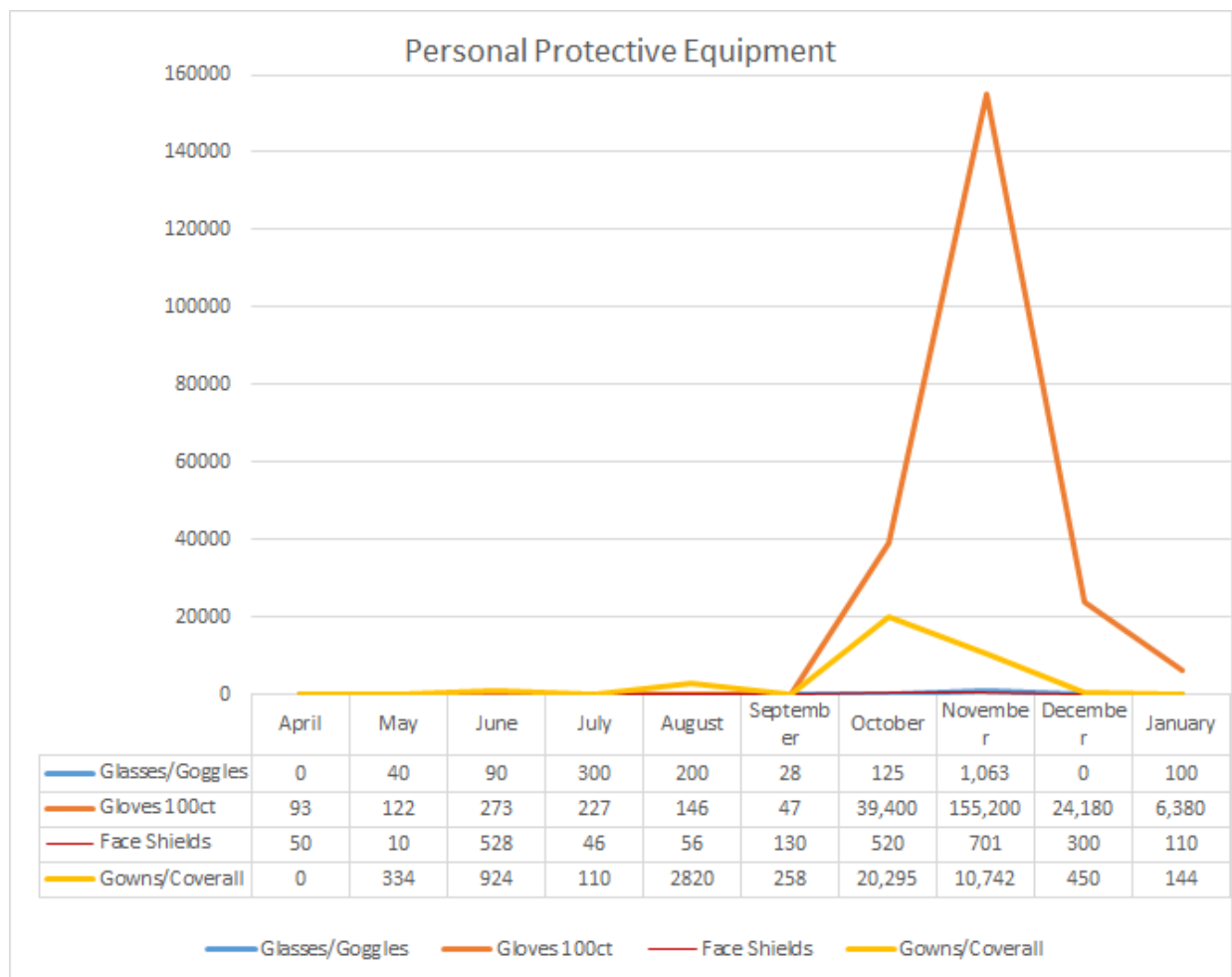
The Unified Command conducted the following food distributions for Districts and OIM (O'odham in Mexico). The distribution included the following contents:

February 2021, distributions will transition to a bi-weekly schedule. The schedule will be as follows:

- Feb 11th, 2021 (41st Shamrock Distribution)
- Feb 25th, 2021 (42nd Shamrock Distribution)

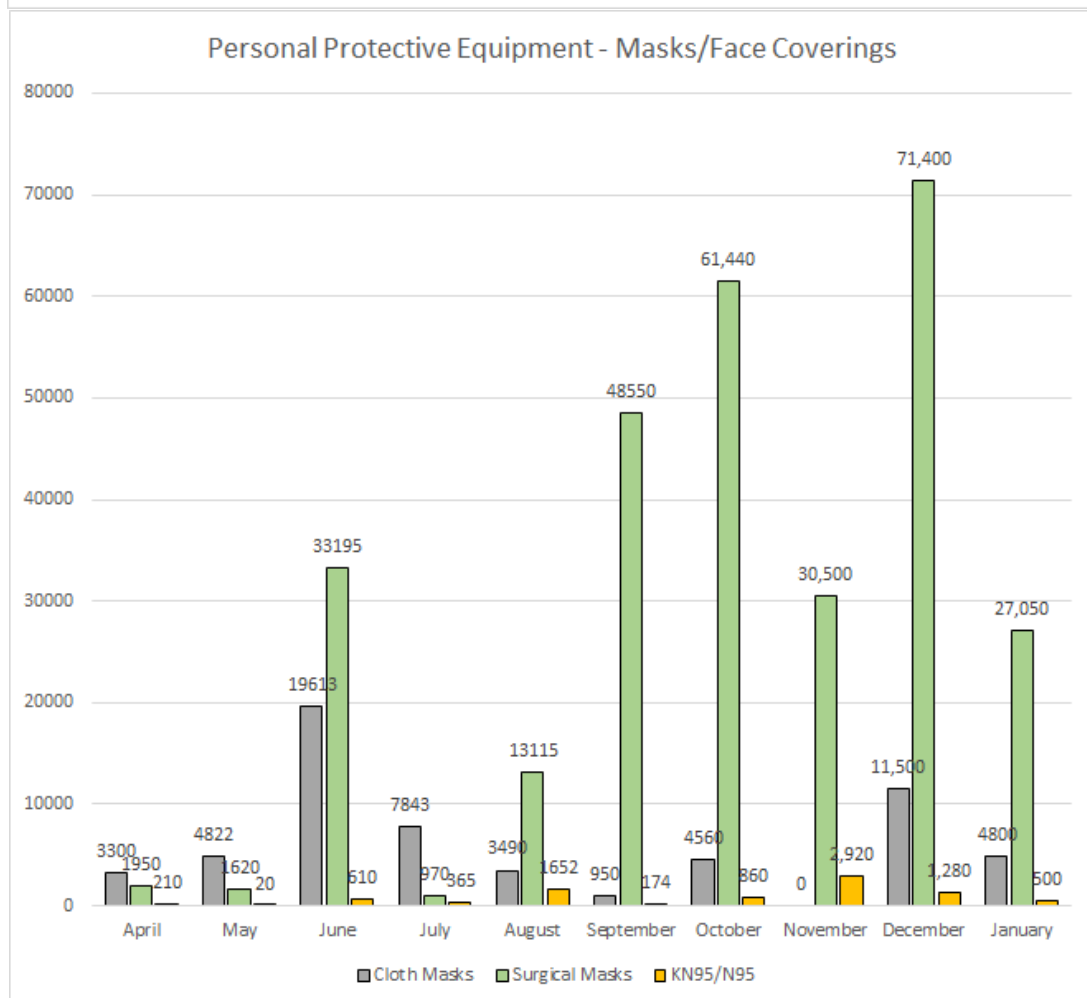
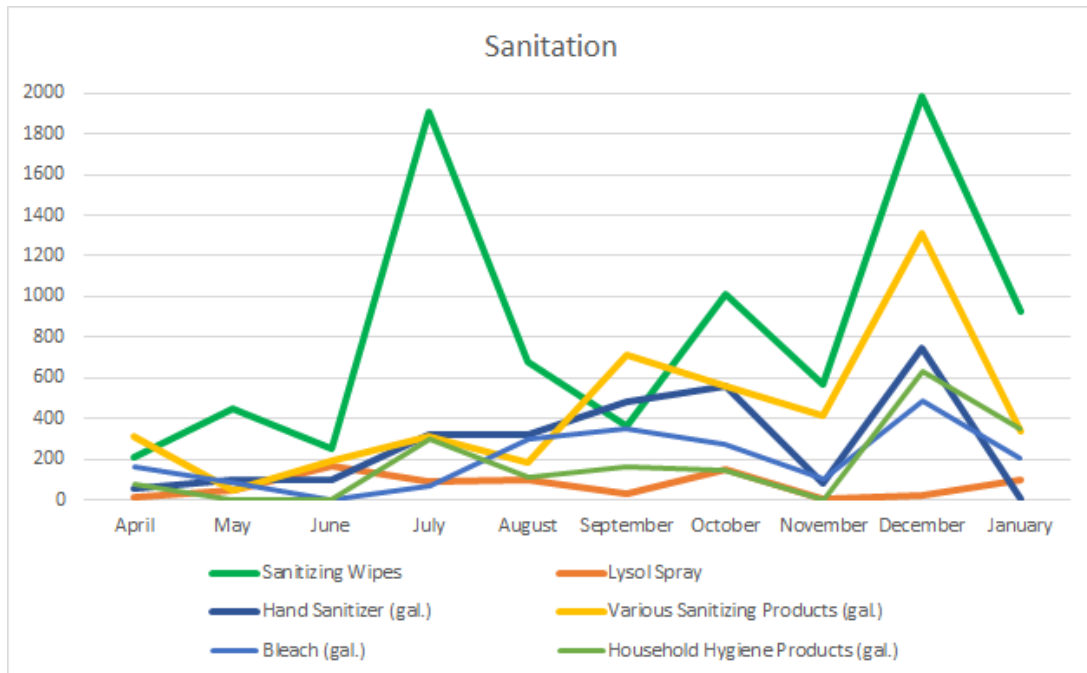
### Personal Protective Equipment (PPE):

The Unified Command has distributed Masks/Face Coverings, Sanitation/Hygiene Products and numerous PPE to Programs, Departments, Communities, Districts and stakeholders. The following graphics identify specific distributions:





## Tohono O'odham Nation: Leadership Update 53

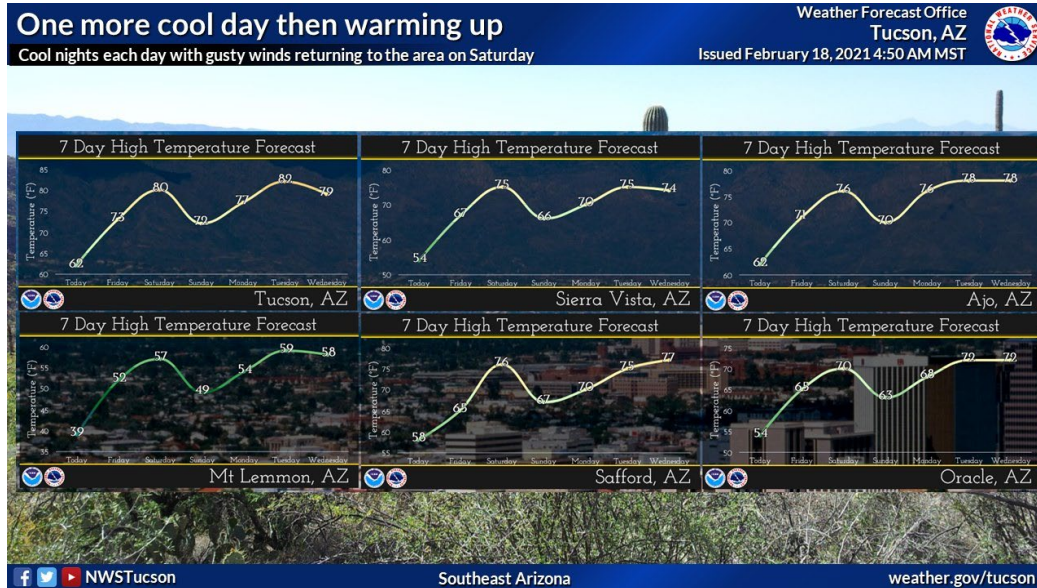




# Tohono O'odham Nation: Leadership Update 53

## Weather:

One more cool day then warmer Friday and Saturday, cooler Sunday then warming back up again next week.



Today	Tonight	Friday	Friday Night	Saturday	Saturday Night	Sunday	Sunday Night	Monday
Sunny	Clear	Sunny	Clear	Sunny	Clear	Sunny	Clear	Sunny

High: 61 °F Low: 35 °F High: 73 °F Low: 44 °F High: 78 °F Low: 41 °F High: 71 °F Low: 41 °F High: 77 °F

**Today:** Sunny, with a high near 61. North northeast wind 8 to 16 mph.

**Tonight:** Clear, with a low around 35. North northeast wind 6 to 9 mph.

**Friday:** Sunny, with a high near 73. North northeast wind 6 to 14 mph.

**Friday Night:** Clear, with a low around 44. Northeast wind 6 to 9 mph becoming southeast after midnight.

**Saturday:** Sunny, with a high near 78. South southeast wind 6 to 16 mph becoming west southwest in the afternoon.

**Saturday Night:** Clear, with a low around 41.

**Sunday:** Sunny, with a high near 71.

**Sunday Night:** Clear, with a low around 41.

**Monday:** Sunny, with a high near 77.

**Monday Night:** Mostly clear, with a low around 44.

**Tuesday:** Sunny, with a high near 80.

**Tuesday Night:** Mostly clear, with a low around 47.

**Wednesday:** Sunny, with a high near 79.