



# Tohono O'odham Nation Health Care (TONHC)

COVID-19 Situation Update: April 7, 2021

T-Ñukuda Ha'icu Cihañig

This is a rapidly evolving situation. Information is based upon data as of April 7, 2021 at 7:00 and may change as more data becomes available.

## COVID-19 Data among Members of Tohono O'odham Nation (TON)

Total Cases	New Cases This Week	TONHC Percent Positive Tests This Week*	Deaths **
1,756	0	2%	76

April 7, 2021: TONHC COVID-19 Vaccination Program is currently in Phase 1A – 1C

Number of people fully vaccinated	Total Doses Given to date	Points of Distribution (PODs) Completed	PODs Open This Week
5,429	12,945	92	8

## What's New?

**Concern for increasing new cases of COVID-19 across the USA. Please continue to take necessary precautions.**

- TONHC continues to vaccinate following CDC guidelines; all adults may be vaccinated (see details).
- Sells District (Nolic Community) had a COVID-19 Vaccination POD April 6, 2021 with 11 vaccinations. On April 7, 32 vaccinations were administered at the Sells Adult Detention Center.
- TONHC currently offers Moderna and Janssen vaccines authorized for persons 18 years and older.
- Several new variants (strains) of COVID-19 have been identified in Arizona, including Pima County, which may be more contagious than the original strain.
- Vaccines appear to maintain efficacy against most of these variants. TONHC continues to encourage vaccination and precautions to prevent spread of variants. Until more people are vaccinated, everyone, including those who are vaccinated, should continue to use precautions in public places: wear face masks, keep 6' distance, and avoid gatherings and crowds.



Sells District Chairman Buendia, Vice Chair Garcia, Cynthia Manuel RN, Director of Public Health Nursing

## Positive COVID-19 Cases

	Enrolled Member of Tohono O'odham Nation	Enrolled Member of Another Tribe or Other	Total
Residing within Boundaries of TON	1200	45	1245
Residing outside Boundaries of TON	556	248	804
<b>Total</b>	<b>1756</b>	<b>294</b>	<b>2050</b>

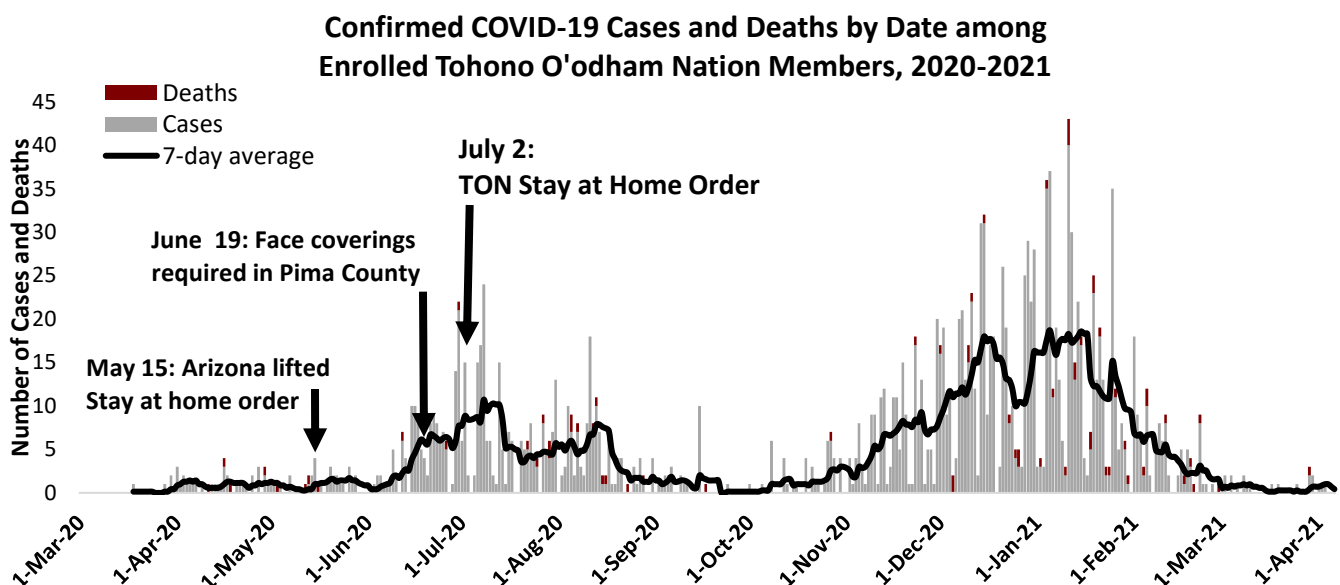
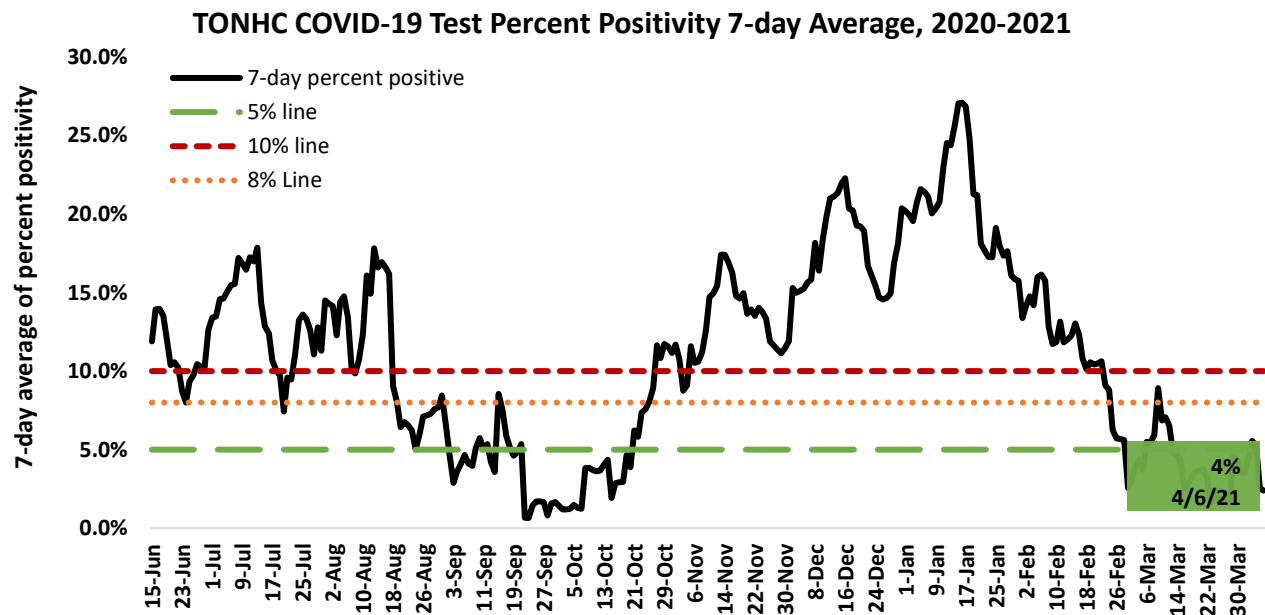
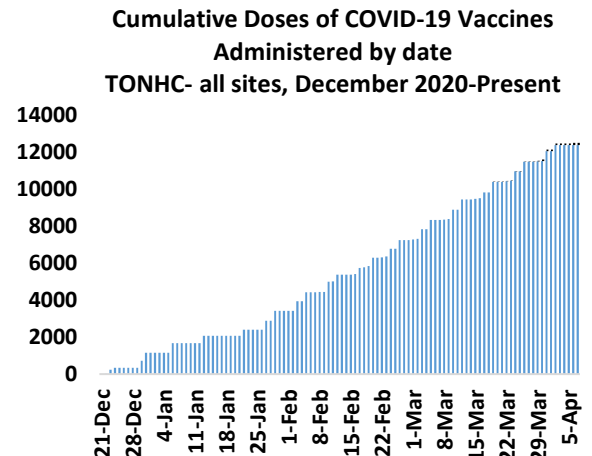
\*includes non-TON members tested at TONHC

\*\*Deaths include non-tribal community members

TONHC Situation Update 04/07/2021 7:00

**Wear a mask, physically distance, and wash your hands to protect Tohono O'odham Nation**

	Enrolled Member of TON	Pima County	AZ
<b>Total Cases</b>	<b>1756</b>	<b>113,253</b>	<b>846,230</b>
<b>Number of cases in last 7 days</b>	<b>1</b>	<b>576</b>	<b>4,419</b>
<b>Incidence Rate last 7 days (per 100,000)</b>	<b>0</b>	<b>55</b>	<b>58</b>
<b>Cumulative Incidence Rate (per 100,000)</b>	<b>9,192</b>	<b>10,841</b>	<b>11,771</b>
<b>Number Deaths</b>	<b>70</b>	<b>2,361</b>	<b>17,023</b>
<b>Deaths (% of total cases)</b>	<b>4%</b>	<b>2%</b>	<b>2%</b>
<b>Number Hospitalized</b>	<b>236</b>	<b>6,960</b>	<b>59,207</b>
<b>Hospitalized (% of total cases)</b>	<b>13%</b>	<b>6%</b>	<b>7%</b>



## COVID-19 Vaccination Points of Dispensing (PODs) in TON

Currently, Pfizer, Moderna, and Janssen vaccines have Emergency Use Authorization (EUA) in the USA. TONHC follows guidelines from the Centers for Disease Control and Prevention and Arizona Department of Health Services (ADHS) to vaccinate in phases. ADHS distributes vaccines to health jurisdictions, including Tohono O'odham Nation, based on population. TONHC vaccinates at "points of dispensing" (PODs) at Sells Hospital, San Xavier San Simon, and Santa Rosa Health Centers. Community and District PODs have also initiated, with the most recent one on 4/6/2021.

**COVID-19 Vaccine is currently available through TONHC to members of the Tohono O'odham Nation and other tribes in Phases 1A, 1B, and 1C eligible groups:**

- Tohono O'odham Nation members or other American Indian/Alaska Native Tribes regardless of employment status or medical diagnoses (photo ID, tribal ID preferred)
- Non-Native persons who work with or live on the Tohono O'odham Nation (bring employee ID or letter from supervisor stating your name, employer, and occupation)
- Non-Native persons who reside in a household with a tribal member (bring proof of residence)
- Must be 18 years (required for Moderna and Janssen)

### Vaccine PODs (Points of Dispensing)

TONHC continues to vaccinate through scheduled PODs. On 4/6/2021, the Sells District Vaccination POD took place at Nolic Community. 11 people were vaccinated. On April 7, 32 vaccinations were administered at the Sells Adult Detention Center. TONHC Public Health Nursing, TON-HHS Community Health Representatives and TON Unified Command appreciate the support of the District PODs and encourage members who plan to receive the vaccine attend the POD when it arrives to their district. District PODs are planned almost every week for the coming months.

Public Service Announcements provide dates and registration information. Safety is a priority; we have medical providers onsite at all times and infection control monitors. Moderna vaccine requires an injection into the upper arm, with a booster shot four weeks later. Janssen vaccine requires one injection into the upper arm, with no booster needed.

### COVID-19 Vaccine types

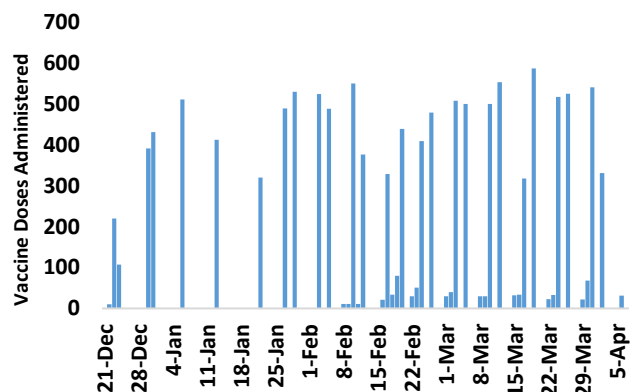
Currently, Pfizer, Moderna, and Johnson & Johnson (Janssen) vaccines have Emergency Use Authorization (EUA) in the USA. The AstraZeneca and Novavax vaccine may undergo evaluation soon. Vaccines are generally available to the public 1-2 months after review. TONHC currently uses Moderna and Janssen. Both of these vaccine brands have been shown to be safe and effective to prevent COVID-19 infection and most importantly, especially serious cases.

### New CDC Guidelines for vaccinated persons in the general public (excludes healthcare and group living situations)

Vaccinated persons exposed to someone with suspected or confirmed COVID-19 are not required to quarantine if they meet all of the following:

- Are fully vaccinated (over 2 weeks after the 2nd dose in a 2-dose series, or ≥2 weeks after one dose of a single-dose vaccine)
- Have been without symptoms since the COVID-19 exposure
- All persons should continue mask wearing and physical distance, even after vaccination. COVID-19 positive persons should isolate themselves for 10 days, even from vaccinated persons.

COVID-19 Vaccine Doses Administered by Date  
TONHC All Sites, Dec 2020-Present

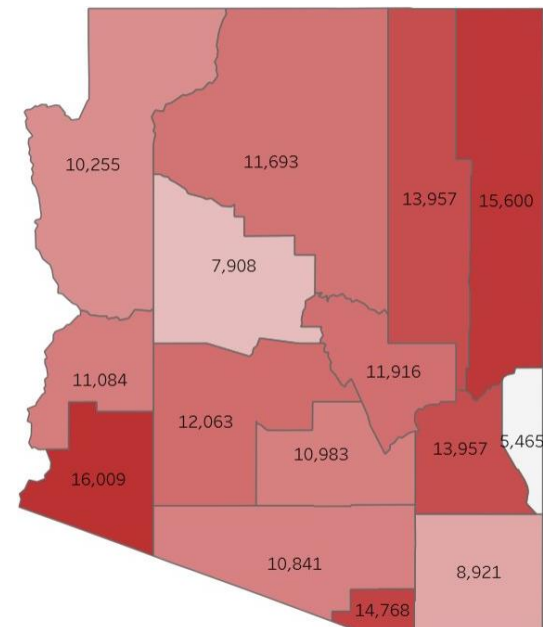


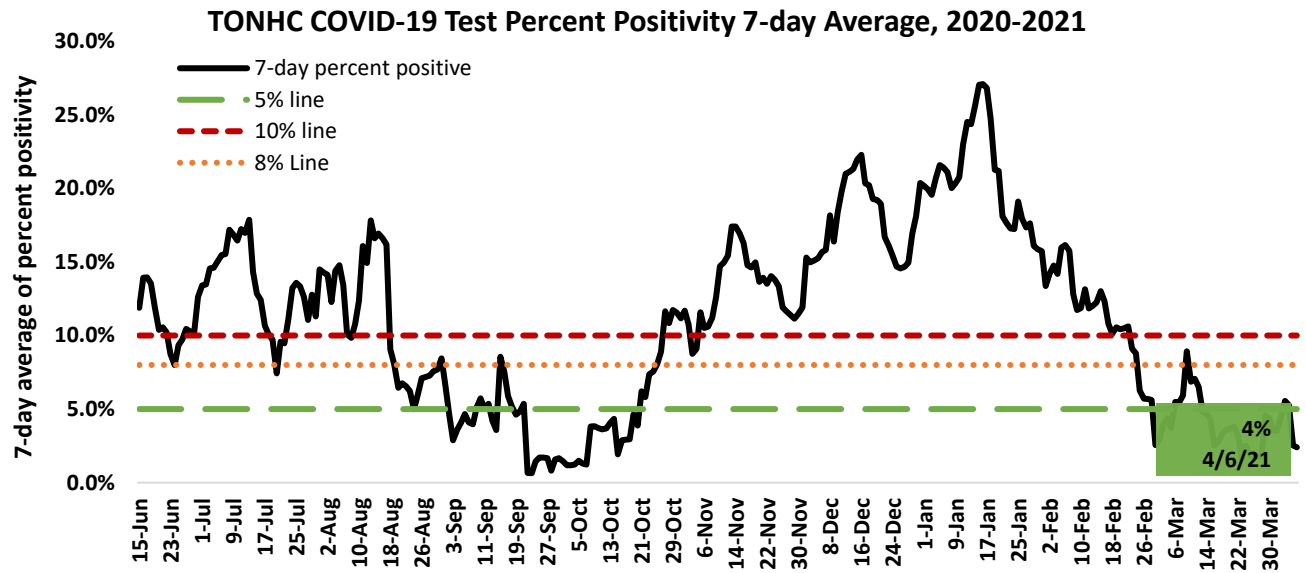
## COVID-19 Brief

	Enrolled Member of Tohono O'odham Nation	Enrolled Member of Another Tribe or Other	Total
Residing within Boundaries of Tohono O'odham Nation	1200	45	1245
Residing outside Boundaries of Tohono O'odham Nation	556	248	804
<b>Total</b>	<b>1756</b>	<b>294</b>	<b>2050</b>

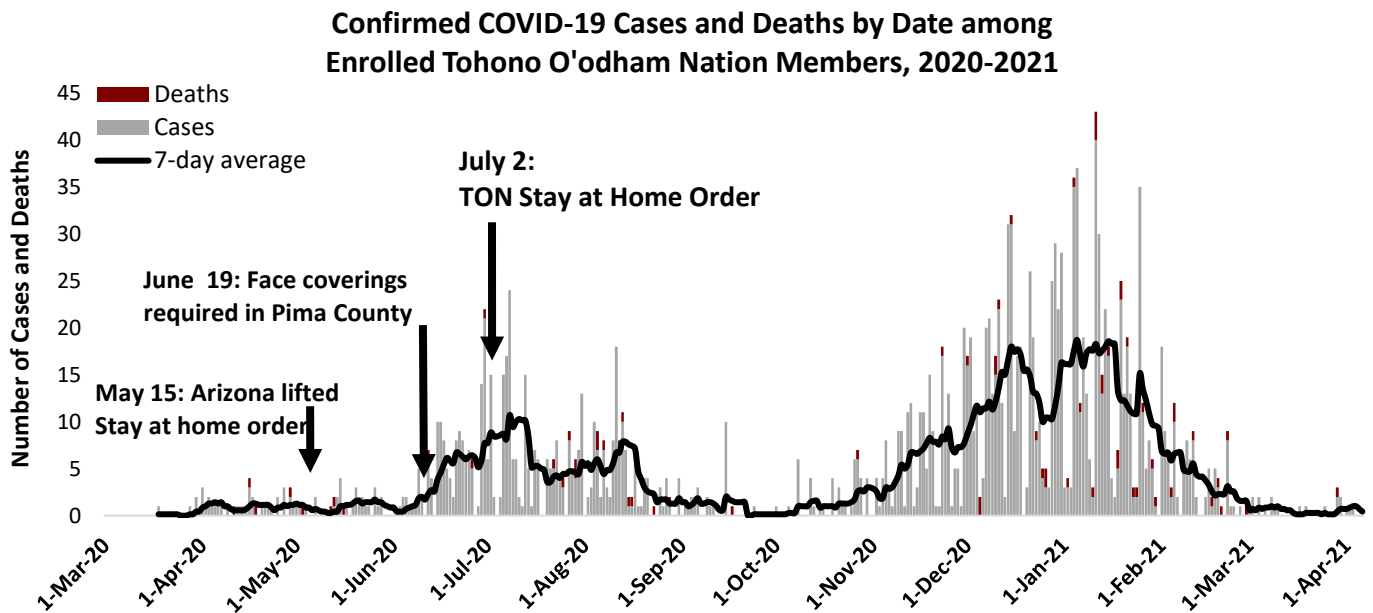
	Enrolled Member of Tohono O'odham Nation	Pima County	Arizona
<b>Total Cases</b>	<b>1756</b>	<b>113,253</b>	<b>846,230</b>
<b>Number of cases in last 7 days</b>	<b>0</b>	<b>576</b>	<b>4,419</b>
<b>Incidence Rate last 7 days (per 100,000)</b>	<b>0</b>	<b>55</b>	<b>58</b>
<b>Cumulative Incidence Rate (per 100,000)</b>	<b>9,192</b>	<b>10,841</b>	<b>11,771</b>
<b>Number Deaths</b>	<b>70</b>	<b>2,361</b>	<b>17,023</b>
<b>Deaths (% of total cases)</b>	<b>4%</b>	<b>2%</b>	<b>2%</b>
<b>Number Hospitalized</b>	<b>236</b>	<b>6,960</b>	<b>59,207</b>
<b>Hospitalized (% of total cases)</b>	<b>13%</b>	<b>6%</b>	<b>7%</b>

**Cumulative Incidence  
Rate per 100K by County**





Weekly test percent positivity is calculated using the day tests were performed and 6-days prior (7-day detected "positive" results)/(7-day total tests performed) x 100



**13,391 COVID-19 Tests Performed at TONHC**

## Tohono O'odham Nation COVID-19 Positive Case Information

	Enrolled Member of Tohono O'odham Nation	Enrolled Member of Another Tribe or Other	Total
Residing within Boundaries of Tohono O'odham Nation	1200	45	1245
Residing outside Boundaries of Tohono O'odham Nation	556	248	804
Total	1756	294	2050

**1,756** members of the Tohono O'odham Nation have tested positive\* for COVID-19 (as of 4/7/2021 at 7:00). On 3/31/2021, there were 1,756. This represents a **0%** increase over the last week. † The number of positive cases is **24x** the number 43 weeks ago (72 on 6/9/2020).

**1,200** members of the Tohono O'odham Nation who tested positive reside in the Tohono O'odham Nation. On 3/31/2021, there were 1,200. This represents a **0%** increase† over the last week. The number of persons who reside in the Tohono O'odham Nation and tested positive for COVID-19 is **50x** the number 43 weeks ago (24 cases on 6/9/2020).

- **919** members (52%) are recovering (among members of the Tohono O'odham Nation) ‡
- **70** deaths among members of the Tohono O'odham Nation and **6** members of another tribe.
- **3** deaths in hospital in Tohono O'odham Nation, **67** in hospitals outside the Tohono O'odham Nation.

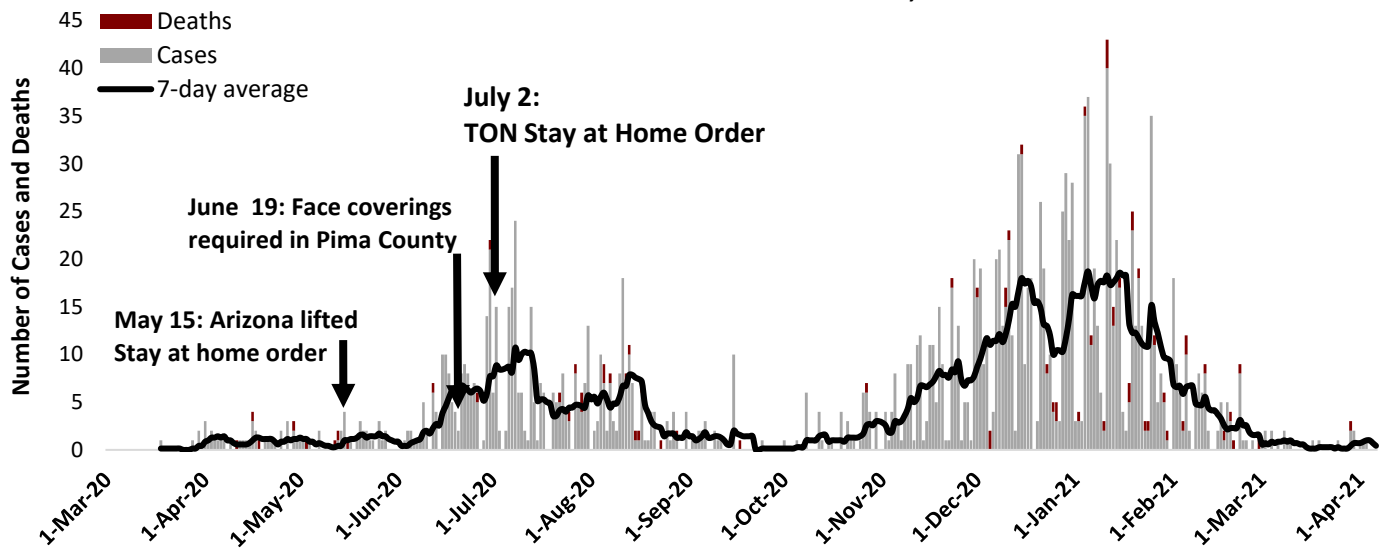
\*COVID-19 positive result means COVID-19 test result of "detected"

†Defined as percentage change (most recent number – previous number)/previous number \* 100

§Absolute change in cumulative case count is the number of cumulative cases through week 2 subtracted from the number of cumulative cases through week 1, |week2 – week1|

‡Recovering is defined as having diagnosis/symptom onset 14-days ago, improving, and no longer hospitalized

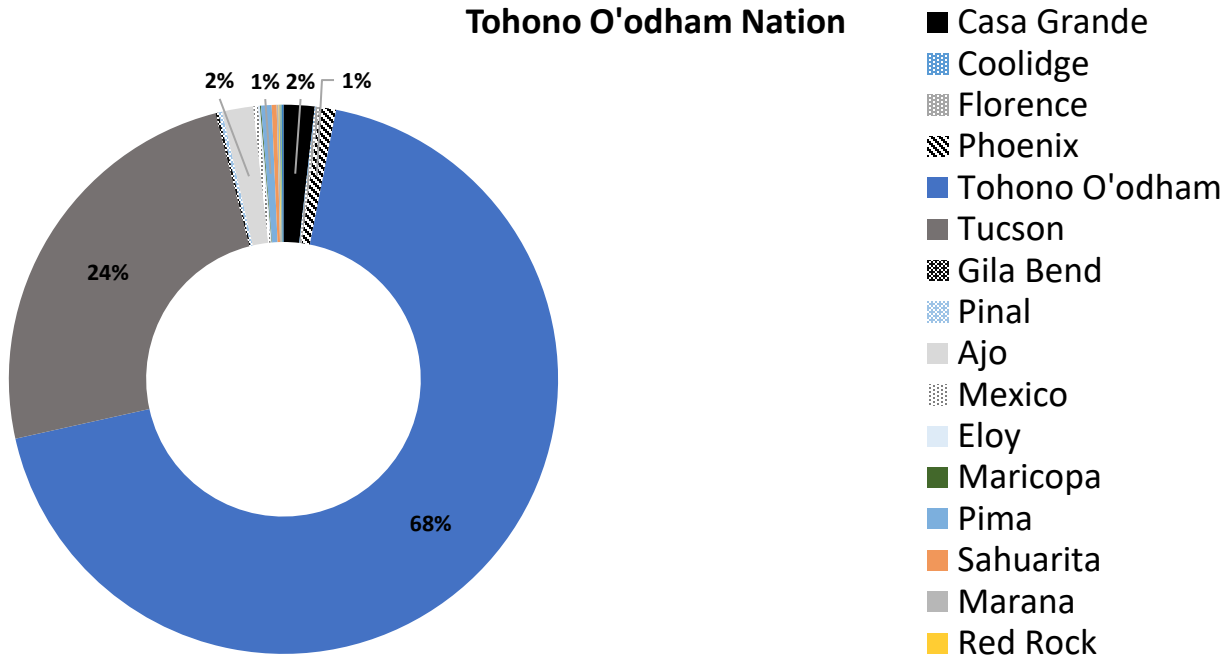
### Confirmed COVID-19 Cases and Deaths by Date among Enrolled Tohono O'odham Nation Members, 2020-2021



7-day average is the average of cases for that day and the 6-days prior

**7/22/2020 was the first week that the percentage of persons residing in the Tohono O'odham Nation was over 50% of the cases.**

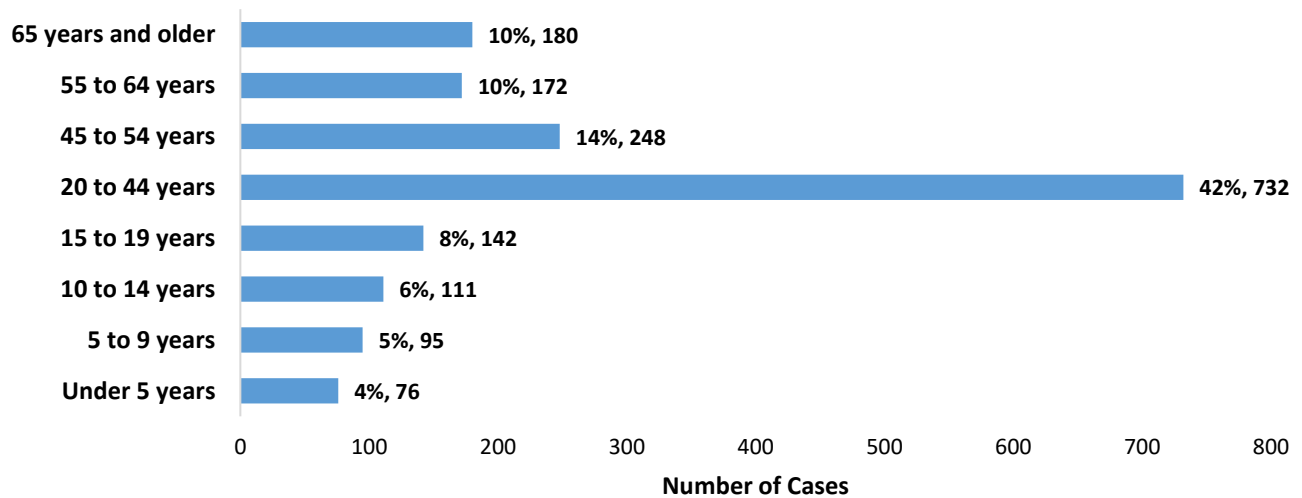
### Region of Residence for COVID-19 Cases among Members of the Tohono O'odham Nation



Some areas are <1%



### Age Distribution of COVID-19 Cases among Tohono O'odham Members, 2020 -2021



### Laboratory-confirmed COVID-19 among Tohono O'odham Nation Enrolled Members

	Count (n)	Percent (%)	State of Arizona Percent (%)
TON members tested positive for COVID-19	1756		
Asymptomatic/Pre-symptomatic	330	19%	
TON Reside in Reservation	1200	68%	
Hospitalized	236	13%	7%
Recovering	919	52%	
Died	70	4%	2%

	Median (years)	Minimum (months)	Maximum (years)
Age	34	0	102

	Male	Percent (%)	Female	Percent
Sex	722	41%	1034	59%

At TONHC, we received the first presumptive positive test result for COVID-19 for a patient seen at San Xavier Health Center in the same day clinic on 3/30/2020. In response, we reached out to clinical staff and the patient/household/community to discuss exposure risk, how to monitor for symptoms, and help guide any recommendations for isolation or quarantine. We anticipate more cases in the future, and we are working together to tackle this challenge. Employee health has reached out to staff for contact tracing. Public health nursing has conducted community contact tracing. Please remember to keep patient and employee results confidential.



## COVID-19 Laboratory Testing at TONHC

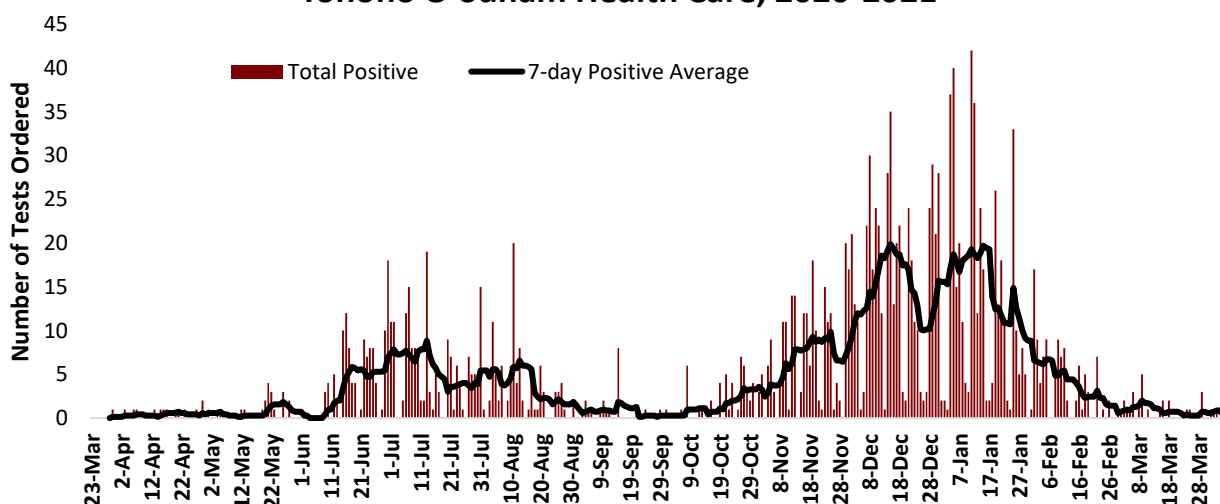
TONHC total number of COVID-19 testing (as of 4/7/2021 at 7:00): **13,391** tests performed:

- 12,346 = patients (anyone who receives care at a TONHC facility)
- 945= employees
- 100 = first responders

We continue to increase our testing capacity. On 3/31/2021, there were 13,266 tests. As of 4/7/2021, **1,739** tests results were positive\* for COVID-19. On 3/31/2021, there were 1,736 tests. The number of positive test results are almost **46x** the amount compared to 42 weeks ago (since 6/9/2020). 38 total tests were positive on 6/9/2020. **81** TONHC employees have tested positive.

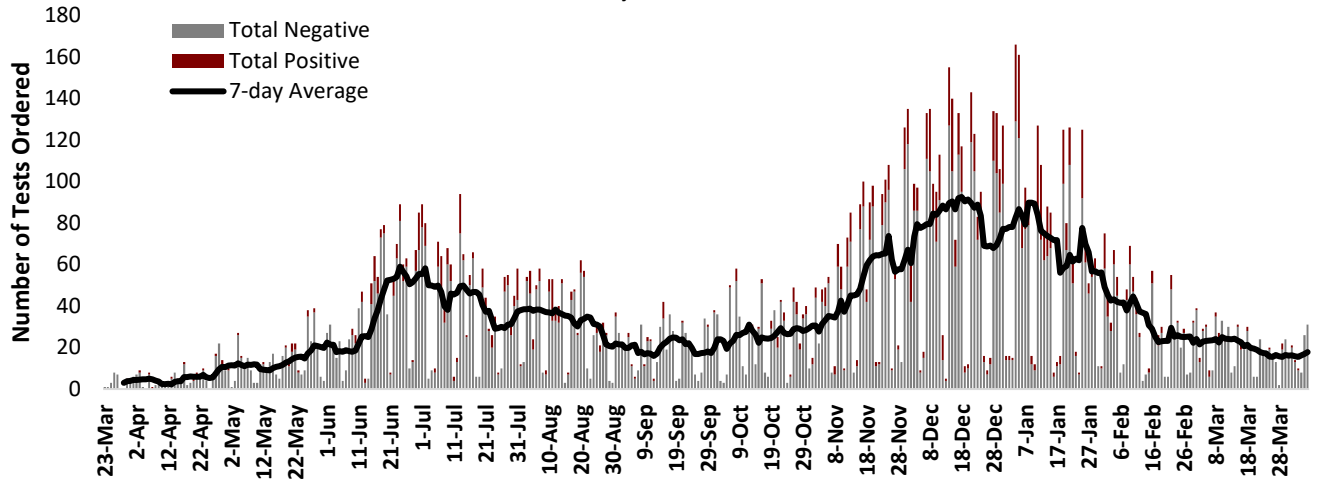
As of 4/7/2021 at 7:00, 8038 individual TONHC patients have tested for COVID-19. This comprises **40%** of the TONHC User Population. User Population consists of patients who have received care at TONHC at least twice in the past three years.

COVID-19 Positive Tests Performed at  
Tohono O'odham Health Care, 2020-2021



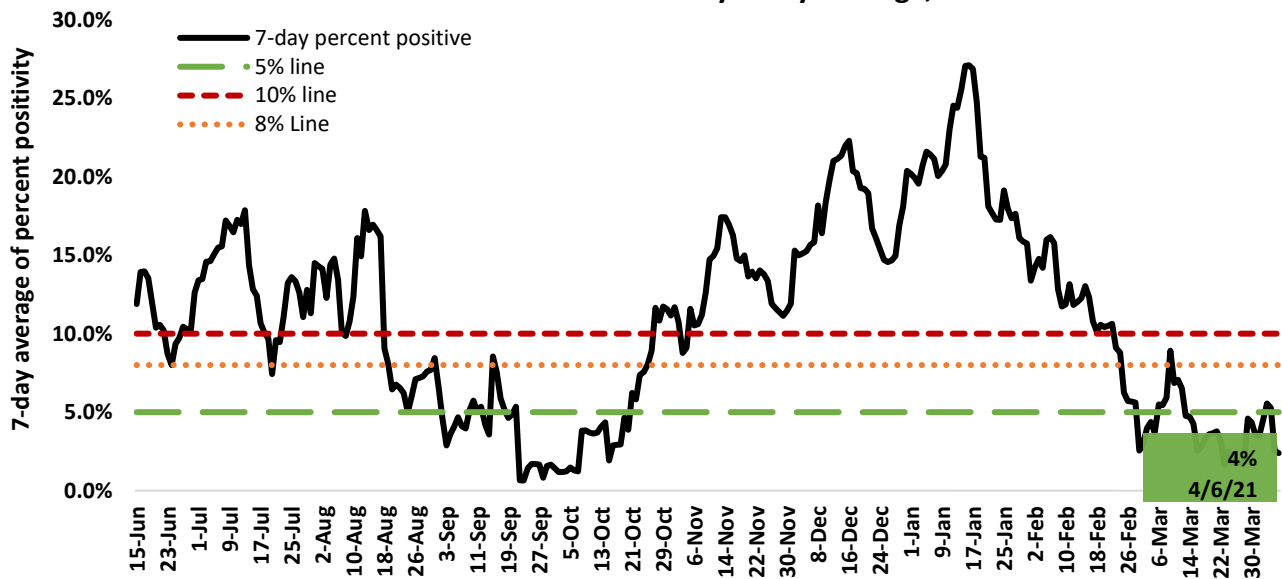
7-day average is the average of cases for that day and the 6-days prior

## COVID-19 Tests Performed at Tohono O'odham Health Care by Result, 2020-2021

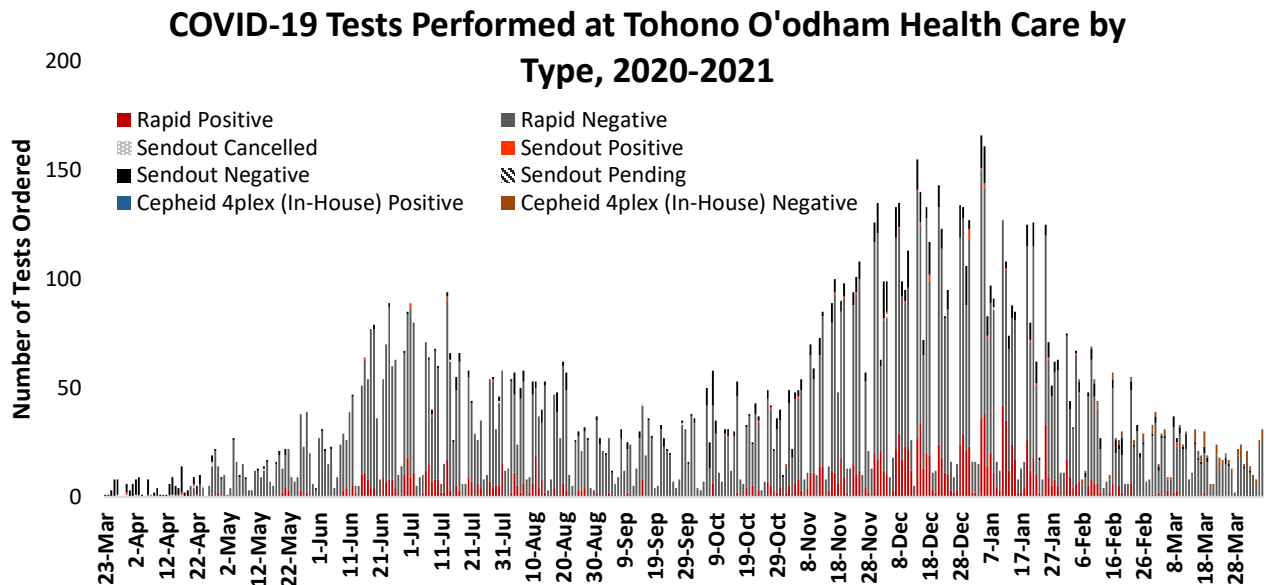


7-day average is the average of cases for that day and the 6-days prior

## TONHC COVID-19 Test Percent Positivity 7-day Average, 2020-2021



\* Weekly test percent positivity is calculated using the day tests were performed and 6-days prior (7-day detected "positive" results)/(7-day total tests performed) x 100%



COVID-19 testing began at TONHC on March 23, 2020. Same-day testing is available at San Xavier, Sells, and San Simon. This means all the equipment to run the tests are in the clinic laboratories at San Xavier, Sells, and San Simon. We began on-site same-day testing on April 20, 2020. There are two types of tests: send-out test or same-day/rapid test. Send-out testing is used for specific cases. As of 9/1/2020, on-site qualitative total antibody testing is available for specified cases.

We have nine on-site Abbott ID NOW™ machines that are used for same-day testing. We are pursuing avenues for more testing machines for on-site testing. In addition to expand our testing capabilities, medical assistants at TONHC completed competencies in performing COVID-19 nasal swab testing to assist with performing testing

**Effective 9/24/2020, patients with no symptoms and no known exposure to someone with COVID-19 can be tested at TONHC. For all testing, please call and schedule an appointment at your clinic.**

Please note testing criteria is accurate as of 9/25/2020 and may change in the future.

\*COVID-19 positive result means COVID-19 test result of “detected” for tests performed at TONHC (San Xavier, San Simon, Sells, and off-site).

†Absolute change in cumulative case count is the number of cumulative cases through week 2 subtracted from the number of cumulative cases through week 1, |week2 – week1|

## Staying Safe at HOME

Our team strongly recommends to continue prevention measures including avoiding all unnecessary travel and gatherings. We also recommend the use of masks/cloth face coverings for all persons in public settings. Please continue to share the messaging of minimizing group contact, including neighbors and relatives not in one's own household.



**Stay at home as much as possible**



**Practice physical distancing (remaining at least 6 feet away from others)**



**Clean your hands often**

Our testing algorithms aim to identify symptomatic persons, asymptomatic persons with known potential COVID-19 exposures, and persons who will enter high-risk or congregate settings (surgery, detention, foster care, hospitalization, dorms, etc.).

**We all need to do our part and to continue to practice physical distancing and frequent hand hygiene.**

**Please share with community members:**

The best way to prevent illness is to avoid exposure to this virus. These simple actions will lessen your chances of catching COVID-19 and spreading it to others:



- Everyone should wear a mask/cloth face covering in public when physical distancing of 6 feet is not possible (except children ages less than 2 years and persons with a medical contraindication).
- Limit direct physical contact to only persons who live in the same household.
- Avoid all group activities/gatherings, even relatives if they do not live with you until further notice.
- Maintain “stay at home” behavior except for essential needs.
- Report illnesses and possible COVID-19 exposures immediately to your provider.
- Frequently wash hands with soap and water, and use alcohol-based hand sanitizer if unable to wash hands.

### Symptoms to Monitor



COVID-19 symptoms to monitor for: fever, chills, cough, difficulty breathing (shortness of breath), runny/stuffy nose, sore throat, headaches, fatigue, abdominal pain, vomiting, diarrhea, new loss of taste or smell. If you have any of these symptoms, please stay home and do not go to work, school, or be in public areas.

## Face Mask Guidance in the Community Setting



### How to make sure your mask works the best it can

1. **Make sure your mask fits snugly against your face.** Gaps can let air with respiratory droplets leak in and out around the edges of the mask
2. **Pick a mask with layers to keep your respiratory droplets in and others' out.** A mask with layers will stop more respiratory droplets getting inside your mask or escaping from your mask if you are sick.

### DO

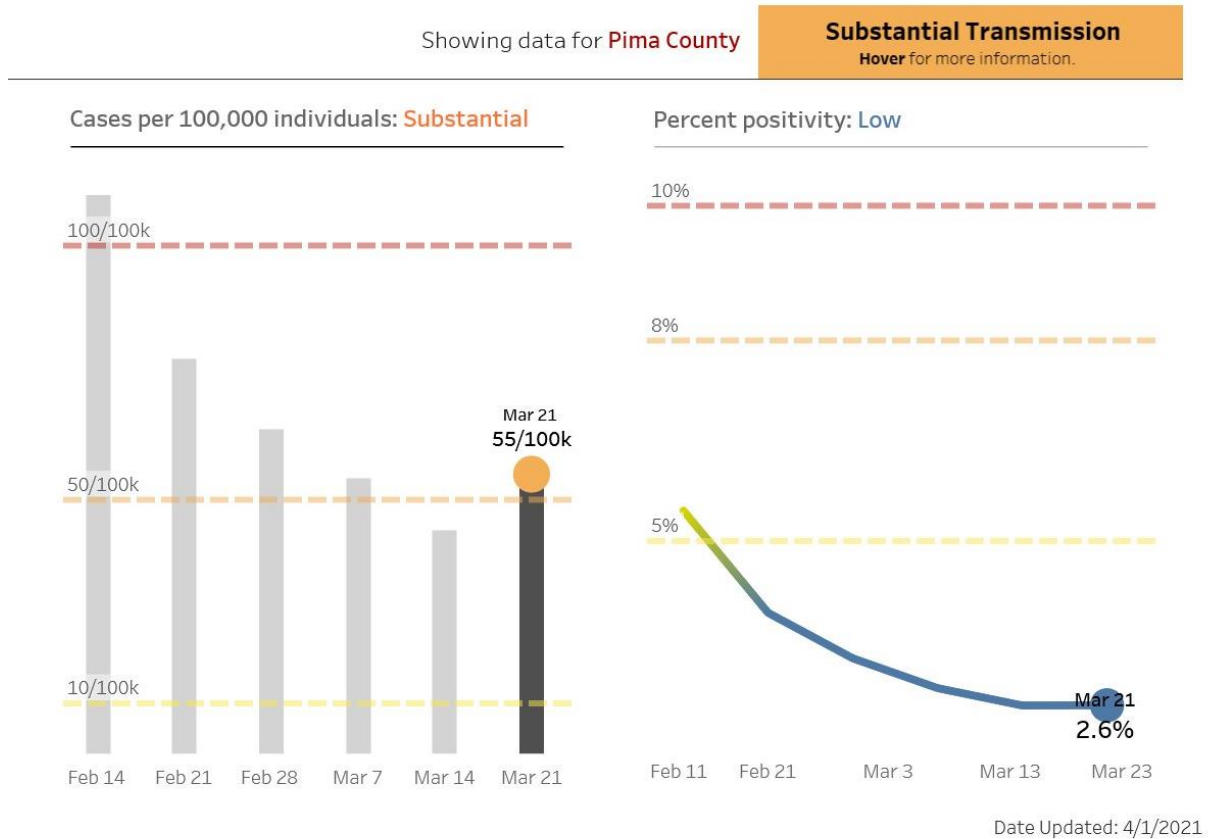
- Choose a mask with a **Nose Wire**
  - A nose wire is a metal strip along the top of the mask
  - Nose wires prevent air from leaking out of the top of the mask.
  - Bend the nose wire over your nose to fit close to your face.
- Use a **Mask Fitter or Brace**
  - Use a mask fitter or brace over a disposable mask or a cloth mask to prevent air from leaking around the edges of the mask.
- Check that it **Fits Snugly** over your nose, mouth, and chin
  - Check for gaps by cupping your hands around the outside edges of the mask.
  - Make sure no air is flowing from the area near your eyes or from the sides of the mask.
  - If the mask has a good fit, you will feel warm air come through the front of the mask and may be able to see the mask material move in and out with each breath.
- Add **Layers** of material
  - 2 ways to layer
    - Use a cloth mask that has multiple layers of fabric.
    - Wear one disposable mask underneath a cloth mask.
  - The second mask should push the edges of the inner mask against your face.
- **Make sure you can see and breathe easily**
  - **Knot and Tuck** ear loops of a 3-ply mask
    - Knot the ear loops of a 3-ply face mask where they join the edge of the mask
    - Fold and tuck the unneeded material under the edges
- For video instructions, see: <https://youtu.be/UANi8Cc71A0>[external icon](#).



Adapted from: <https://www.cdc.gov/coronavirus/2019-ncov/your-health/effective-masks.html> Accessed 2/24/2021

## Arizona COVID-19 School Benchmarks

On March 2<sup>nd</sup>, 2021 CDC announced updated school guidance. The Arizona Department of Health Developed Community Transmission to Reflect Level of Community Risk: CDC recommends the use of two measures of community burden to determine the level of community transmission. These measures assess the incidence and spread of COVID-19 in the community, not the school itself. Risk is dependent on community level transmission **and** implementation of school and community mitigation strategies.



Indicator	Low Transmission	Moderate Transmission	Substantial Transmission	High Transmission
Total new cases per 100,000 persons in the last 7 days	0 – 9	10 – 49	50 – 99	≥ 100
Percentage of nucleic acid amplification tests (NAATs) that are positive during the past 7 days	<5.0%	5.0% – 7.9%	8.0% – 9.9%	≥ 10.0%

Arizona Department of Health Services, <https://www.azdhs.gov/documents/preparedness/epidemiology-disease-control/infectious-disease-epidemiology/novel-coronavirus/schools/school-benchmarks.pdf>, accessed 3/11/21.

# COVID-19 GUIDANCE ON HOME ISOLATION

The Centers for Disease Control and Prevention (CDC), the Arizona Department of Health Services, and Tohono O'odham Nation Health Care updated guidance on home isolation. Accumulating evidence supports ending isolation and precautions for persons with COVID-19 using a symptom-based strategy. Researchers have reported that people with mild to moderate COVID-19 remain infectious no longer than 10 days after their symptoms began, and those with more severe illness or those who are severely immunocompromised remain infectious no longer than 20 days after their symptoms began. Therefore, CDC has updated the recommendations for discontinuing home isolation.

## **If you tested positive for COVID-19, you need to stay in ISOLATION:**

- If you tested positive for COVID-19 or are waiting for results, you should be in **isolation**. Isolation means you need to stay away from others as much as possible. You should stay in a specific "sick room," if possible, and away from other people in your home.
- If you cannot separate from others at home, you should wear a mask.
- Do not attend work, school, be in public areas, or use public transportation.
- Do not share household items like dishes, cups, eating utensils, and bedding.
- Cover coughs and sneezes with a tissue or your elbow. Throw away used tissues in the trash and wash your hands.
- Avoid touching your eyes, nose, and mouth.
- Wash your hands often with soap and warm water for at least 20 seconds.
- Clean high-touch surfaces (tables, doorknobs, light switches, countertops, handles, desks, phones, keyboards, toilets, etc.) daily.
- Reschedule all non-essential medical appointments.
- If you need medical care, call your provider **before going**, and tell them about your illness.

## **The number of days you should isolate at home depends on your SYMPTOMS, how SICK you were, and whether you are SEVERELY IMMUNOCOMPROMISED.**

Please **look at the chart on the back of this sheet** to help you figure out how long you should stay isolated at home.

- 1) If you **had any symptoms** consistent with COVID-19 **and** had **mild or moderate illness**, you should isolate at home until:
  - At least **10 days** have passed since your symptoms first started **and**
  - At least 24 hours have passed since your fever resolved (without the use of medication) **and**
  - Your other symptoms have improved.
- 2) If you **had any symptoms** consistent with COVID-19 **and** had **severe or critical illness** **or** are **severely immunocompromised**, you should isolate at home until:
  - At least **20 days** have passed since your symptoms first started **and**
  - At least 24 hours have passed since your fever resolved (without the use of medication) **and**
  - Your other symptoms have improved.
- 3) If you **did not have any symptoms** consistent with COVID-19, you should isolate at home until;
  - **10 days** have passed since your first COVID-19 test was done.
- 4) If you **did not have any symptoms** consistent with COVID-19 **and** are **severely immunocompromised**, you should isolate at home until:
  - **20 days** have passed since your first COVID-19 test was done.

Contact your healthcare provider or Public Health Nursing for any questions.

CDC guidance, <https://www.cdc.gov/coronavirus/2019-ncov/hcp/disposition-in-home-patients.html>, accessed 7/29/20.

Guidance may change as new information becomes available. Please look for the most up-to-date recommendations.

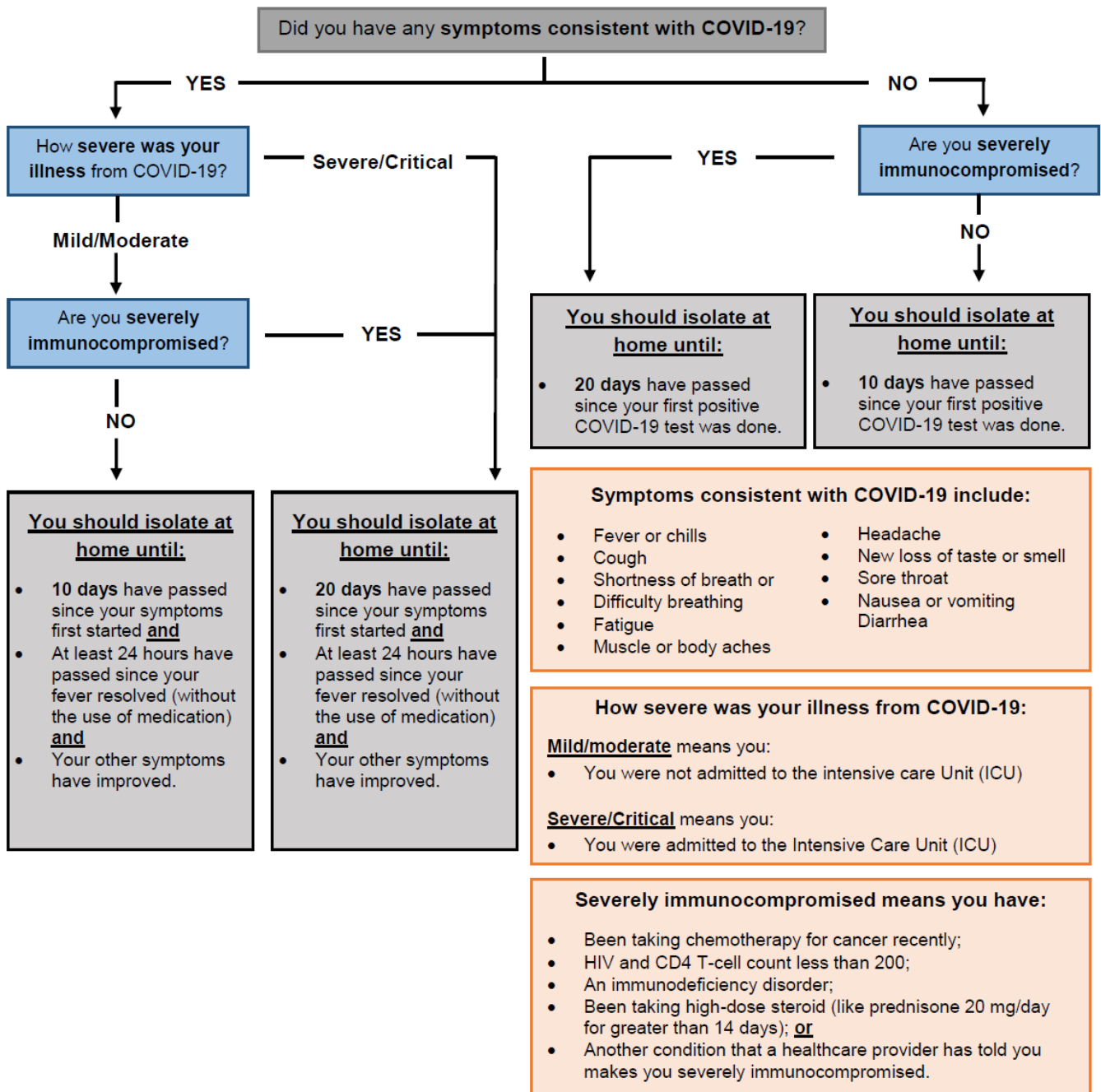
## **TOHONO O'ODHAM NATION HEALTH CARE**

Updated 7/27/2020 (subject to change)





## How long should I isolate at home if I **tested positive** for COVID-19?



Guidance may change as new information becomes available. Please look for the most up-to-date recommendations.

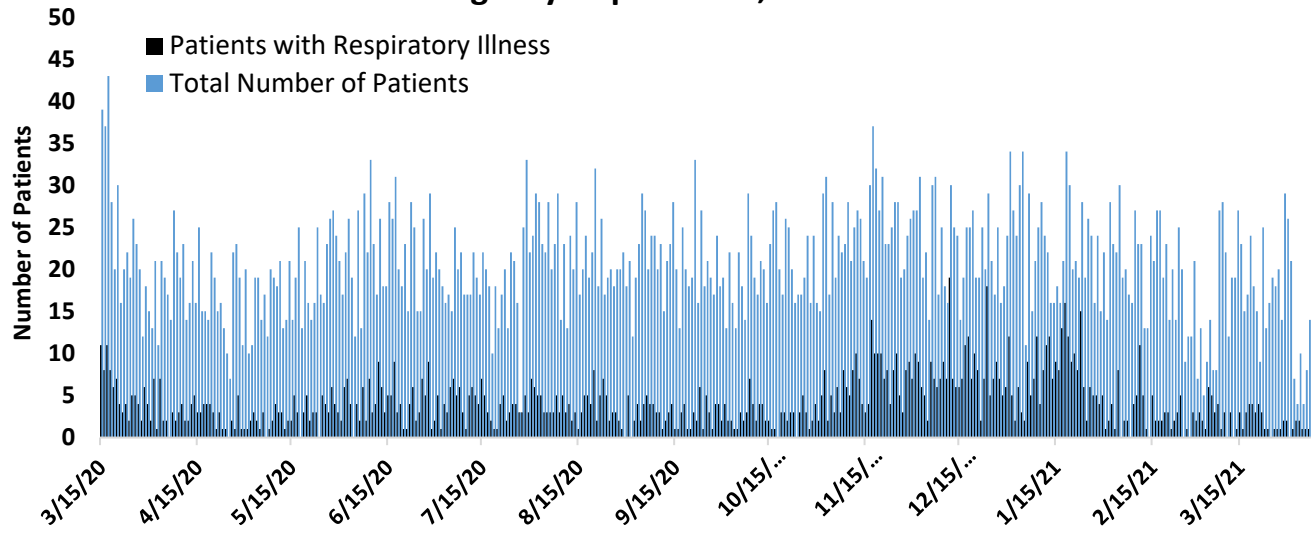
### TOHONO O'ODHAM NATION HEALTH CARE

Updated 7/27/2020 (subject to change)



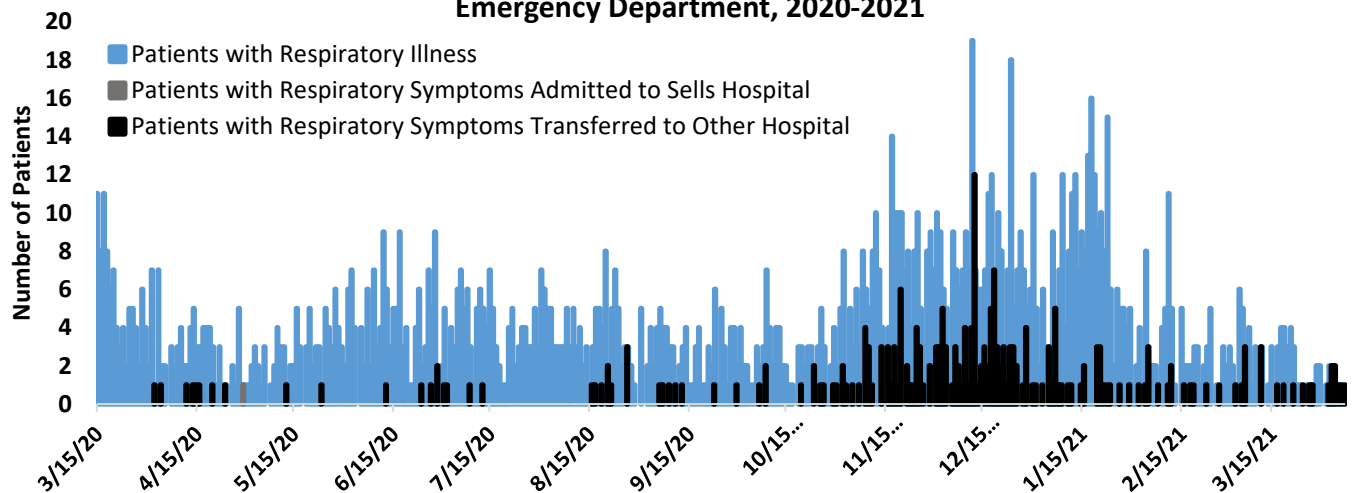
## Sells Emergency Department Syndromic Surveillance

**Patients Presenting with Respiratory Illness and Daily Totals, Sells Emergency Department, 2020-2021**



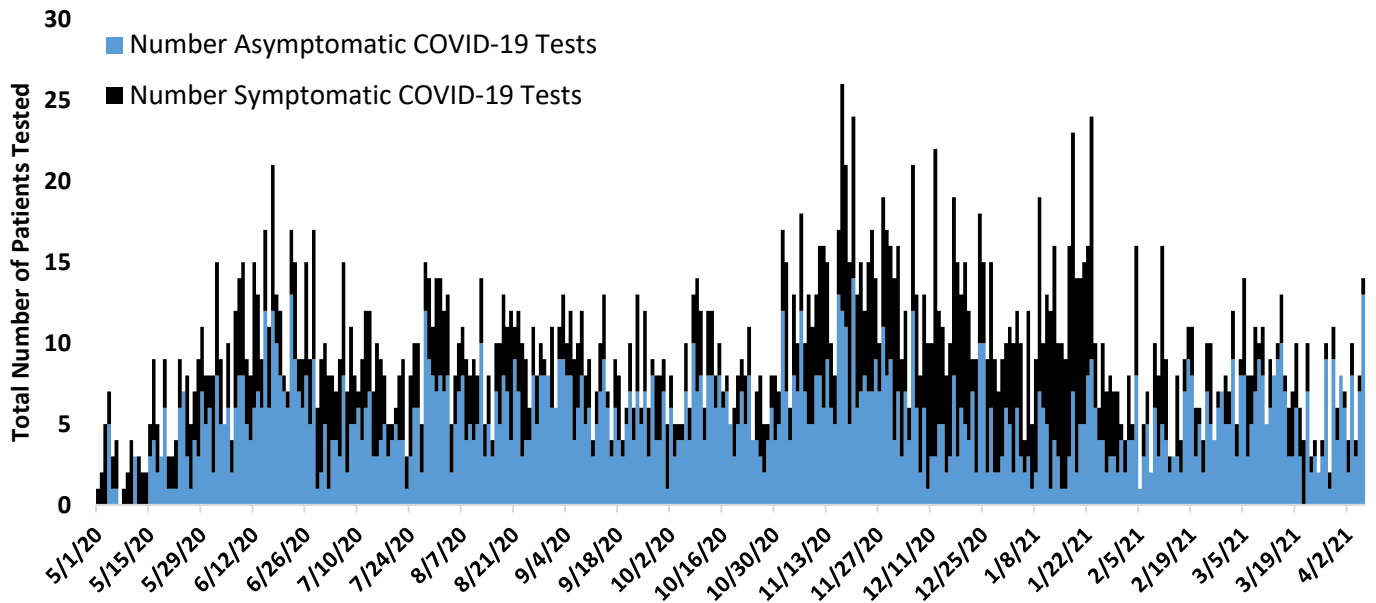
Syndromic surveillance refers to detection of indicators that are discernible before confirmed diagnoses are made. For example, an increase in the number of patients seen with respiratory symptoms could be an indicator of COVID-19. There were between 1 and 2 patients seen daily in Sells Emergency Department with respiratory symptoms during the week of 3/29/2021- 4/4/2021.

**Patients Presenting with Respiratory Illness and Number of Patients Transferred/Admitted from Emergency Department to Inpatient Hospital, Sells Emergency Department, 2020-2021**



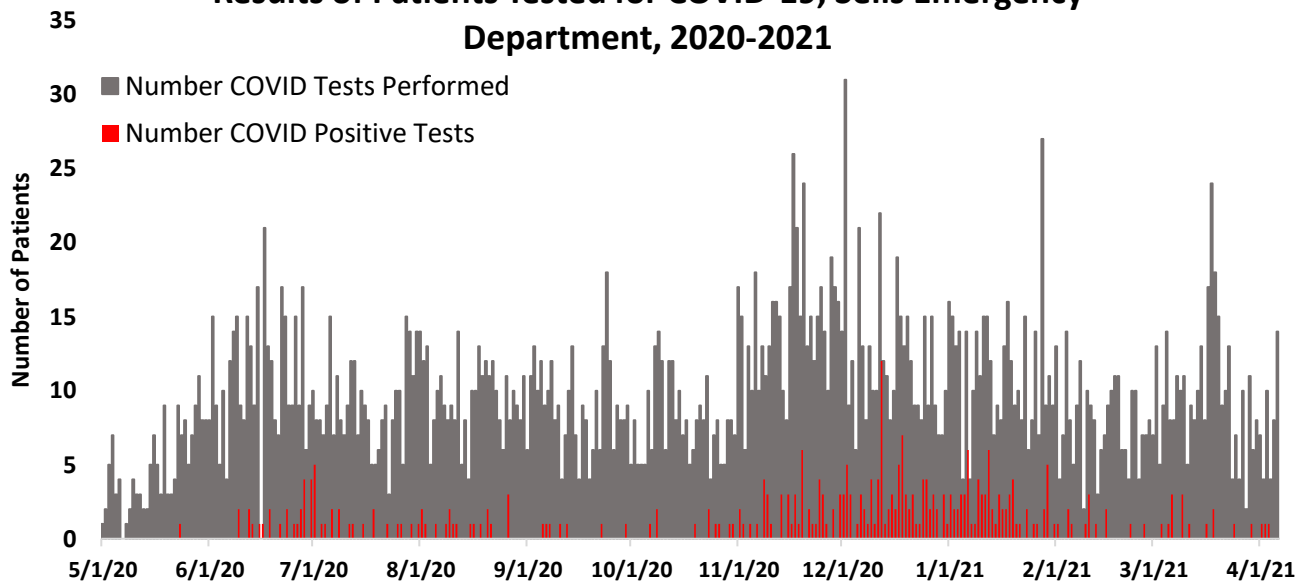
As of 4/7/2021, there were 2 admissions to Sells Hospital and 239 outside transfers for respiratory symptoms from Sells Emergency Department. The number of patients transferred from the emergency department to hospital inpatient units helps to identify severity of disease among the population. This is a level of disease severity that requires a higher level of care, such that care must be managed in the hospital (e.g. with oxygen, mechanical ventilation, etc.).

### Patients Tested for COVID-19, Sells Emergency Department, 2020-2021



Same-day COVID-19 testing began on 4/20/20. From 3/28/21– 4/4/21, between 4 and 29 patients were seen each day in the emergency department. Asymptomatic tests are performed on people who have no symptoms (no cough, no diarrhea, no fever, etc.). Symptomatic tests refer to tests performed on people who have symptoms (cough, fever, diarrhea, etc.) of COVID-19.

### Results of Patients Tested for COVID-19, Sells Emergency Department, 2020-2021



The week of 3/29/21–4/4/21, 4 people seen in the emergency department tested positive for COVID-19. There have been 314 total positive test results from tests performed in Sells emergency department

## EMPLOYEE HEALTH

**All employees at TONHC must wear a procedure/surgical mask while at work. All employees in patient care areas must wear a procedure/surgical mask and eye protection. All employees in areas with patients with suspected or confirmed COVID-19 must wear N95 respirator, eye protection, gloves, and gown.**

561 TONHC employees and TON first responders (881 encounters) have been evaluated by employee health for respiratory symptoms related to illness or other reasons (as of 7:00 4/7/2021).

3 TONHC employees and TON first responders are currently sick (as of 7:00 4/7/2021).

**81 TONHC employees** tested positive for COVID-19. Each positive result has prompted an internal and external investigation and contact tracing. Based on these investigations, transmissions were more likely due to community spread. Employees possibly exposed are tested for COVID-19.

All employees are required to contact Employee Health with any call-outs. This is to ensure that employees are tested for COVID-19 if sick or exposed and given appropriate guidance on when to return to work. Employees are also required to contact their supervisor when they call out.

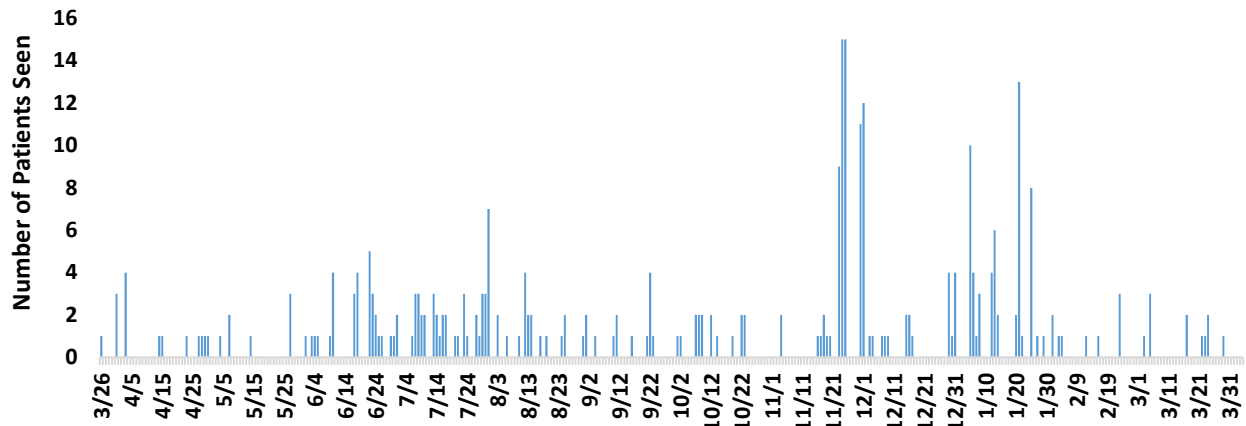
## TONHC Infection Control

Infection control prevents or stops the spread of infections in healthcare settings. TONHC COVID-19 infection control team monitors, tracks, and provides guidance on personal protective equipment (PPE such as gowns, gloves, face shields, N95 respirators).

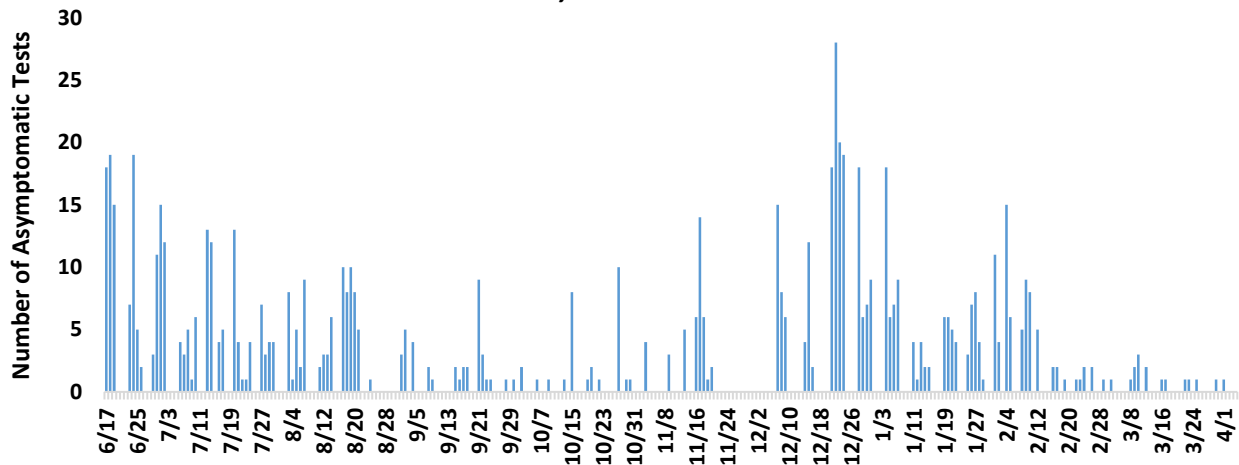
- At the San Xavier, Sells, and San Simon Health Care Centers, the Battelle CCDS Critical Care Decontamination System™ is being used to decontaminate N95 respirators using concentrated, vapor phase hydrogen peroxide (Emergency Use Authorization (EUA) issued by US Food and Drug Administration (FDA)).
- All staff are wearing procedure/surgical masks, and staff caring for patients are also wearing eye protection.
- Staff caring for patients that have or may have been exposed to COVID-19 are wearing gowns, gloves, face shields or other eye protection, and N95 respirators or Powered Air Purifying Respirators (PAPRs).

## CLINIC – SAN SIMON

**Number of Patients seen at San Simon Respiratory Clinic,  
2020-2021**



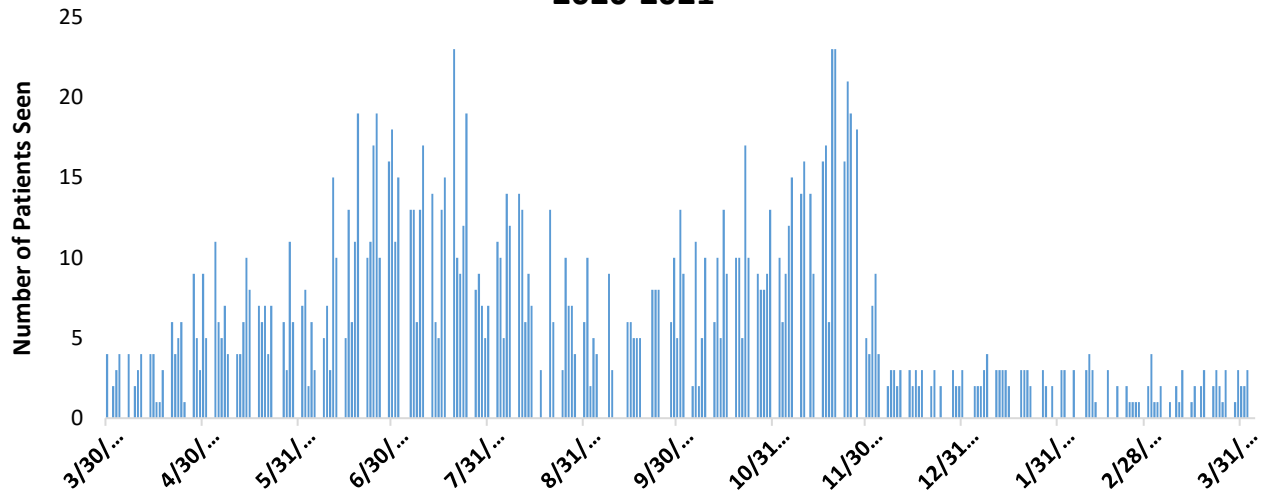
**Number of COVID-19 Asymptomatic Tests Performed at San  
Simon, 2020-2021**



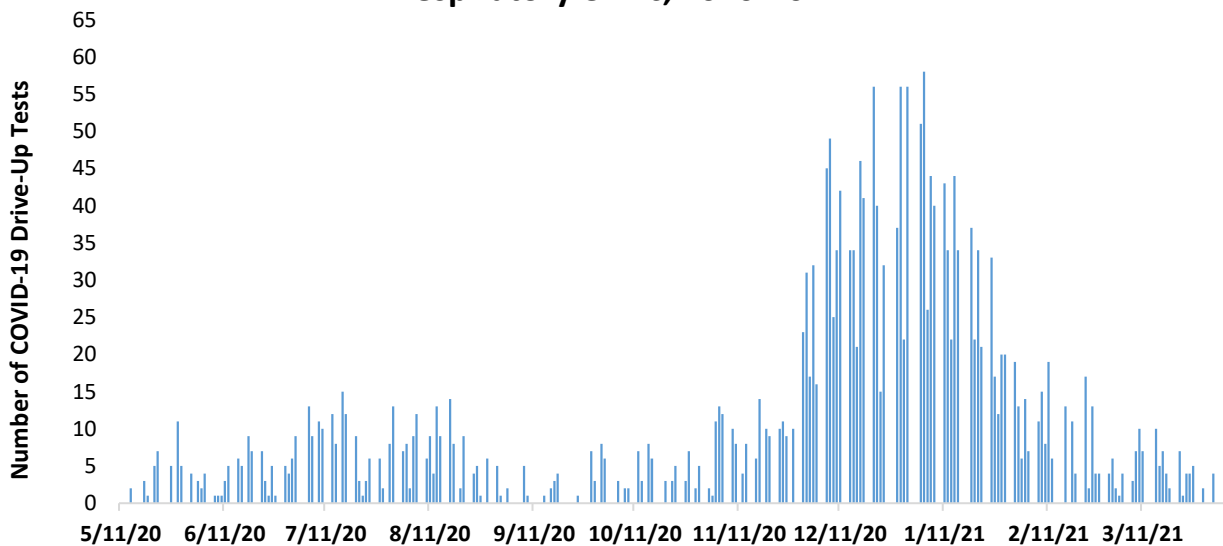
These are the number of tests for COVID-19 performed on patients that have no symptoms of COVID-19 (no fever, no cough, no difficulty breathing, etc.), or patients who are symptomatic but only desire to be tested. They are performed on people who may have had exposure to COVID-19, are entering a congregate setting, or are going to be admitted to the hospital.

## CLINIC – SAN XAVIER

**Number of Patients seen at San Xavier Respiratory Clinic,  
2020-2021**



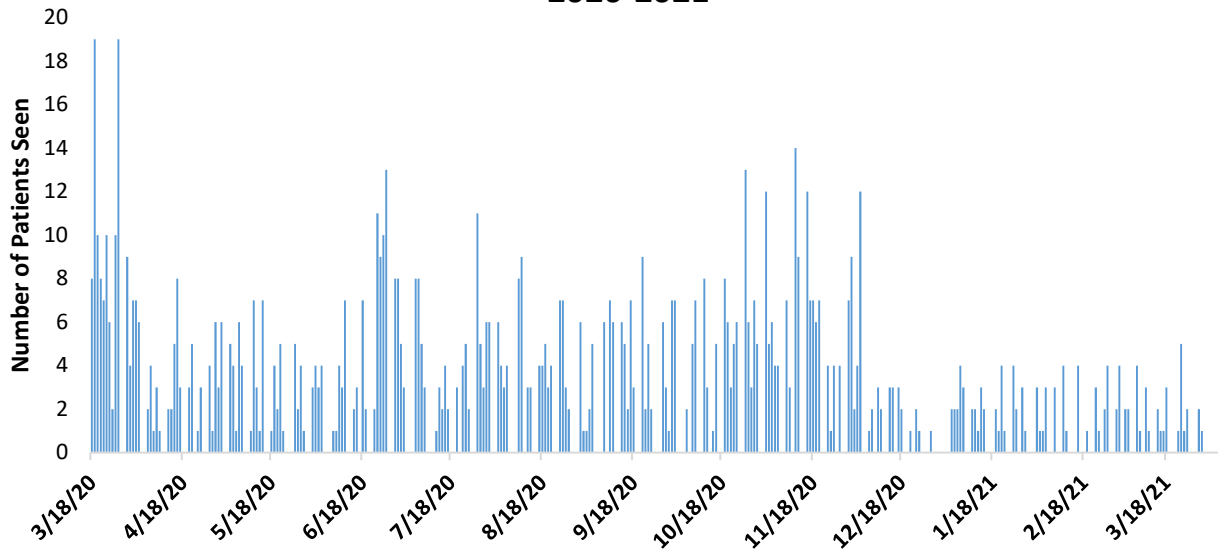
**Number of Drive-Up COVID-19 Tests Performed at San Xavier  
Respiratory Clinic, 2020-2021**



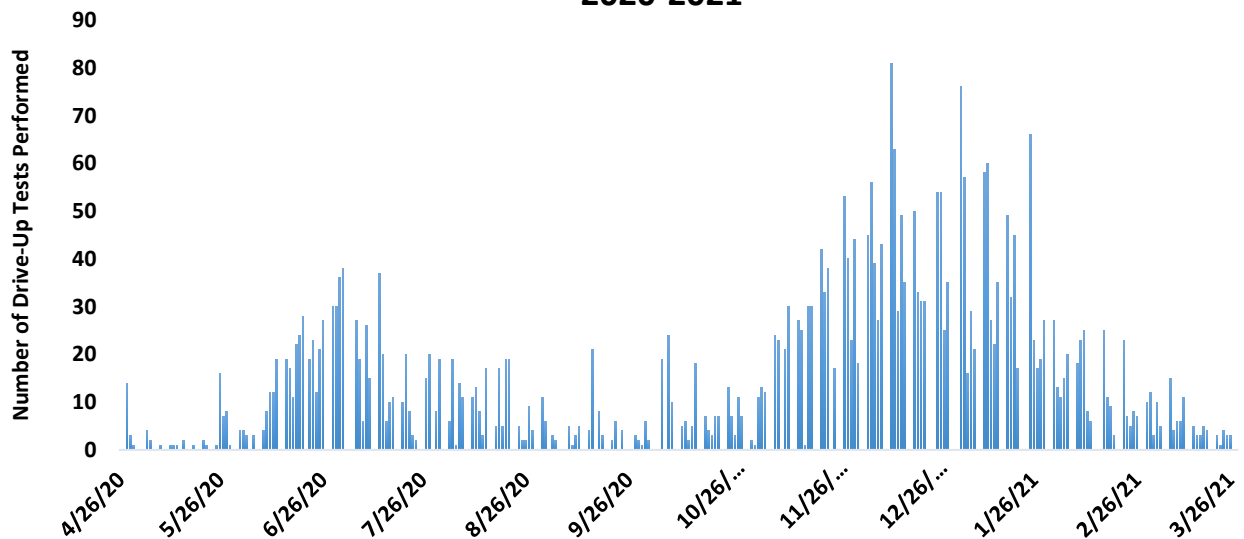
Drive-Up testing includes both symptomatic and asymptomatic patients, with testing for symptomatic patients beginning in November at San Xavier Clinic. Asymptomatic testing is for patients that have no symptoms of COVID-19 (no fever, no cough, no difficulty breathing, etc.). They are performed on people who may have had exposure to COVID-19, are entering a congregate setting, or are going to be admitted to the hospital. Patients who have COVID-19 symptoms may be offered a drive up test instead of a Respiratory Clinic visit.

## CLINIC – SELLS

**Number of Patients seen at Sells Respiratory Clinic,  
2020-2021**



**Number of Drive-Up COVID-19 Tests Performed at Sells Clinic,  
2020-2021**



Drive-Up testing includes both symptomatic and asymptomatic patients, with testing for symptomatic patients beginning on 11/23/2020 at Sells Hospital. Asymptomatic testing is for patients that have no symptoms of COVID-19 (no fever, no cough, no difficulty breathing, etc.). They are performed on people who may have had exposure to COVID-19, are entering a congregate setting, or are going to be admitted to the hospital. Patients who have COVID-19 symptoms may be offered a drive up test instead of a Respiratory Clinic visit.



## SELLS INPATIENT UNIT

To minimize possible exposure and conserve personal protective equipment, visitors are not allowed on the inpatient wards. Exceptions are for a minor, woman in labor, and special circumstances. In accordance with state enhanced surveillance advisory related to COVID-19, daily information has been reported to Arizona State using EMResource.

5 patients were admitted to Sells Hospital who tested positive for COVID-19. Inpatient, in-hospital transportation, and postmortem protocols have been developed. Every patient admitted to the inpatient unit of Sells hospital is tested for COVID-19.

Med/Surge Bed Availability – 13 (4/7/2021)

Med/Surge Bed Capacity – 14, with 5 additional beds available if needed for emergency situations

No intensive care unit services

Negative Pressure Rooms – 2 inpatient rooms, 1 in emergency department (inpatient rooms are used by emergency department or other clinics when indicated).

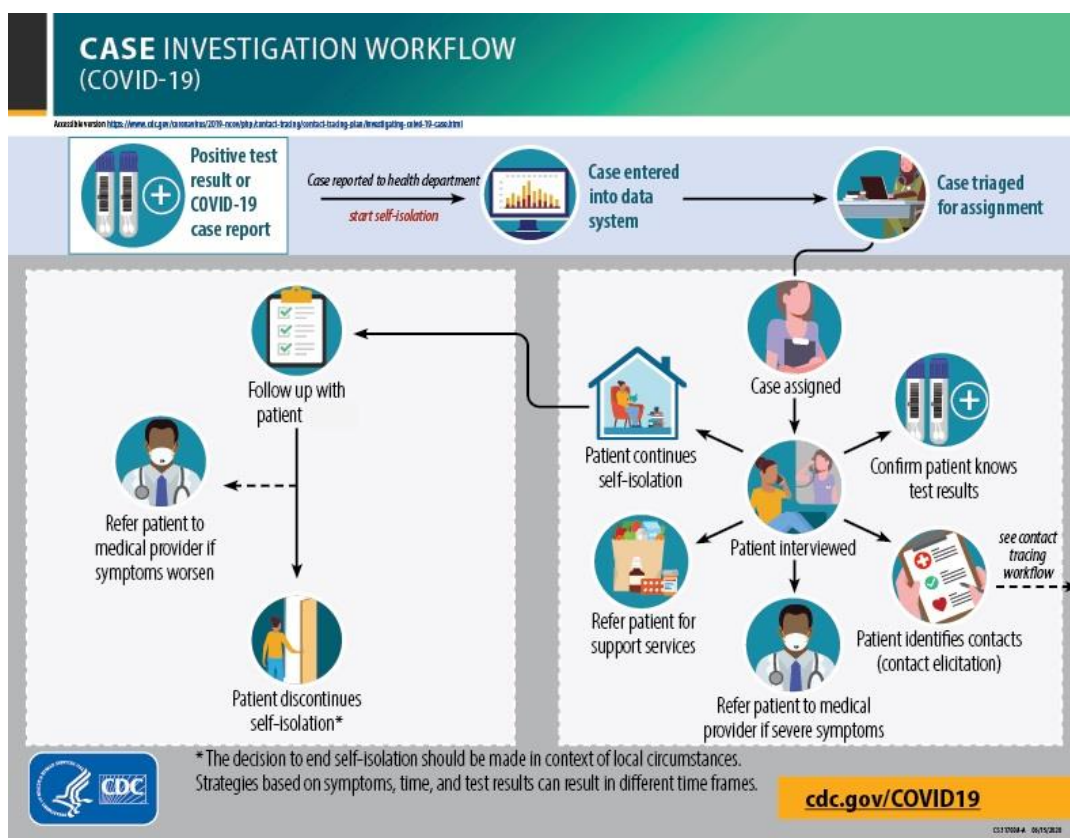
For all transfers outside of TONHC we are calling the Arizona Surge Line. The Arizona Surge Line is a 24/7 toll-free statewide system activated 4/22/20 to keep hospitals and regions of Arizona from being overwhelmed by facilitating COVID-19 patient admission, transfer, and discharge to appropriate levels of care.

In preparation, our outpatient clinic staff has been cross-trained in inpatient patient care. To date we have trained 16 member of the healthcare workforce to manage patients in the hospital setting. Cross training will allow us to increase the number of patients we can take care of on the inpatient unit. Please note that Sells hospital is not an intensive care unit, so we cannot take care of patients with COVID-19 requiring intensive respiratory treatment. These patients are transferred to intensive care units at other sites.

## PUBLIC HEALTH NURSING – CONTACT TRACING

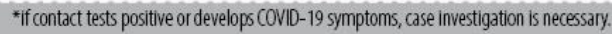
**As of 4/7/21 at 7:00, 3,764 individual contact tracings have occurred in the Tohono O'odham Nation.**

TONHC public health nursing conducts case investigation and contact tracing (involves interviewing). Case investigations are initiated on everyone who tests positive for COVID-19.



Contact tracing, a core disease control measure, is a key strategy for preventing further spread of COVID-19. Contact tracing is part of the process of supporting patients with suspected or confirmed infection. In contact tracing, public health nursing works with patients to help them recall everyone with whom they have had close contact during the timeframe in which they may have been infectious. To protect patient privacy, contacts are only informed that they may have been exposed to a patient with the infection. They are not told the identity of the patient who may have exposed them. Contacts are provided with education, information, and support to understand their risk, what they should do to separate themselves from others who are not exposed, how to monitor themselves for illness, and the possibility that they could spread the infection to others even if they themselves do not feel ill.

**Accession number** <https://www.ncbi.nlm.nih.gov/ncbiinfo/contact-us/contact-us-by-email.html>



CSJ 0008-4 06/15/2018

## APPENDIX

### Confirmed COVID-19 Cases and Absolute Change among Enrolled Tohono O'odham Nation Members by Week, 2020-2021\*

Week (2020)	Cumulative COVID-19 Cases Among Enrolled Tohono O'odham Tribal	Absolute Change <sup>§</sup> in Cumulative Case Counts from Previous Week
June 24 <sup>th</sup> – June 30 <sup>th</sup>	208	
July 1 <sup>st</sup> – July 7 <sup>th</sup>	265	57
July 8 <sup>th</sup> – July 14 <sup>th</sup>	324	59
July 15 <sup>th</sup> – July 21 <sup>st</sup>	349	25
July 22 <sup>nd</sup> – July 28 <sup>th</sup>	382	33
July 29 <sup>th</sup> – August 4 <sup>th</sup>	421	39
August 5 <sup>th</sup> – August 11 <sup>th</sup>	468	47
August 12 <sup>th</sup> – August 18 <sup>th</sup>	501	33
August 19 <sup>th</sup> – August 25 <sup>th</sup>	513	12
August 26 <sup>th</sup> – September 1 <sup>st</sup>	523	10
September 2 <sup>nd</sup> – September 8 <sup>th</sup>	532	9
September 9 <sup>th</sup> – September 15 <sup>th</sup>	546	14
September 16 <sup>th</sup> – September 22 <sup>nd</sup>	546	0
September 23 <sup>rd</sup> – September 29 <sup>th</sup>	547	1
September 30 <sup>th</sup> – October 6 <sup>th</sup>	549	2
October 7 <sup>th</sup> – October 13 <sup>th</sup>	560	11
October 14 <sup>th</sup> – October 20 <sup>th</sup>	566	6
October 21 <sup>st</sup> – October 27 <sup>th</sup>	584	18
October 28 <sup>th</sup> – November 3 <sup>rd</sup>	597	13
November 4 <sup>th</sup> – November 10 <sup>th</sup>	635	38
November 11 <sup>th</sup> – November 17 <sup>th</sup>	685	50
November 18 <sup>th</sup> – November 24 <sup>th</sup>	742	57
November 25 <sup>th</sup> – December 1 <sup>st</sup>	803	61
December 2 <sup>nd</sup> – December 8 <sup>th</sup>	888	85
December 9 <sup>th</sup> – December 15 <sup>th</sup>	1014	126
December 16 <sup>th</sup> – December 22 <sup>nd</sup>	1106	92
December 23 <sup>rd</sup> – December 29 <sup>th</sup>	1188	82
December 30 <sup>th</sup> – January 5 <sup>th</sup>	1319	131
January 6 <sup>th</sup> – January 12 <sup>th</sup>	1440	121
January 13 <sup>th</sup> – January 19 <sup>th</sup>	1526	86
January 20 <sup>th</sup> – January 26 <sup>th</sup>	1620	94
January 27 <sup>th</sup> – February 2 <sup>nd</sup>	1666	46
February 3 <sup>rd</sup> – February 9 <sup>th</sup>	1699	33
February 10 <sup>th</sup> – February 16 <sup>th</sup>	1722	23
February 17 <sup>th</sup> – February 23 <sup>rd</sup>	1740	18
February 24 <sup>th</sup> – March 2 <sup>nd</sup>	1743	3
March 3 <sup>rd</sup> – March 9 <sup>th</sup>	1751	8
March 10 <sup>th</sup> – March 16 <sup>th</sup>	1752	1
March 17 <sup>th</sup> – March 23 <sup>rd</sup>	1754	2
March 24 <sup>th</sup> – March 30 <sup>th</sup>	1756	2
March 31 <sup>st</sup> – April 6 <sup>th</sup>	1756	0

\*changes due to added cases

TONHC Situation Update 04/07/2021 7:00

**Wear a mask, physically distance, and wash your hands to protect Tohono O'odham Nation**

**Confirmed COVID-19 Cases and Absolute Change among Enrolled Tohono O'odham Nation Members Residing within the Tohono O'odham Nation by Week, 2020-2021\***

<b>Week (2020)</b>	<b>Cumulative COVID-19 Cases Among Enrolled Tohono O'odham Tribal Members Residing within the Tohono O'odham Nation Boundary</b>	<b>Absolute Change<sup>s</sup> in Cumulative Case Counts from Previous Week</b>
June 24 <sup>th</sup> – June 30 <sup>th</sup>	87	
July 1 <sup>st</sup> – July 7 <sup>th</sup>	116	29
July 8 <sup>th</sup> – July 14 <sup>th</sup>	163	47
July 15 <sup>th</sup> – July 21 <sup>st</sup>	182	19
July 22 <sup>nd</sup> – July 28 <sup>th</sup>	204	22
July 29 <sup>th</sup> – August 4 <sup>th</sup>	234	30
August 5 <sup>th</sup> – August 11 <sup>th</sup>	272	38
August 12 <sup>th</sup> – August 18 <sup>th</sup>	299	27
August 19 <sup>th</sup> – August 25 <sup>th</sup>	309	10
August 26 <sup>th</sup> – September 1 <sup>st</sup>	319	10
September 2 <sup>nd</sup> – September 8 <sup>th</sup>	326	7
September 9 <sup>th</sup> – September 15 <sup>th</sup>	340	14
September 16 <sup>th</sup> – September 22 <sup>nd</sup>	340	0
September 23 <sup>rd</sup> – September 29 <sup>th</sup>	340	0
September 30 <sup>th</sup> – October 6 <sup>th</sup>	341	1
October 7 <sup>th</sup> – October 13 <sup>th</sup>	349	8
October 14 <sup>th</sup> – October 20 <sup>th</sup>	352	3
October 21 <sup>st</sup> – October 27 <sup>th</sup>	358	6
October 28 <sup>th</sup> – November 3 <sup>rd</sup>	369	11
November 4 <sup>th</sup> – November 10 <sup>th</sup>	401	32
November 11 <sup>th</sup> – November 17 <sup>th</sup>	436	35
November 18 <sup>th</sup> – November 24 <sup>th</sup>	484	48
November 25 <sup>th</sup> – December 1 <sup>st</sup>	527	43
December 2 <sup>nd</sup> – December 8 <sup>th</sup>	588	61
December 9 <sup>th</sup> – December 15 <sup>th</sup>	683	95
December 16 <sup>th</sup> – December 22 <sup>nd</sup>	745	62
December 23 <sup>rd</sup> – December 29 <sup>th</sup>	794	49
December 30 <sup>th</sup> – January 5 <sup>th</sup>	882	88
January 6 <sup>th</sup> – January 12 <sup>th</sup>	967	85
January 13 <sup>th</sup> – January 19 <sup>th</sup>	1029	62
January 20 <sup>th</sup> – January 26 <sup>th</sup>	1105	76
January 27 <sup>th</sup> – February 2 <sup>nd</sup>	1135	30
February 3 <sup>rd</sup> – February 9 <sup>th</sup>	1163	28
February 10 <sup>th</sup> – February 16 <sup>th</sup>	1176	13
February 17 <sup>th</sup> – February 23 <sup>rd</sup>	1188	12
February 24 <sup>th</sup> – March 2 <sup>nd</sup>	1191	3
March 3 <sup>rd</sup> – March 9 <sup>th</sup>	1195	4
March 10 <sup>th</sup> – March 16 <sup>th</sup>	1196	1
March 17 <sup>th</sup> – March 23 <sup>rd</sup>	1198	2
March 24 <sup>th</sup> – March 30 <sup>th</sup>	1200	2

TONHC Situation Update 04/07/2021 7:00

**Wear a mask, physically distance, and wash your hands to protect Tohono O'odham Nation**

March 31 <sup>st</sup> – April 6 <sup>th</sup>	1200	0
--	------	---

\*Changes due to added cases and reclassification of residence

### TONHC COVID-19 Positive Test Results and Absolute Change by Week, 2020-2021

Week (2020)	TONHC Cumulative Positive COVID-19 Test Results	Absolute Change <sup>†</sup> in Positive Test Results from Previous Week
June 24 <sup>th</sup> – June 30 <sup>th</sup>	153	
July 1 <sup>st</sup> – July 7 <sup>th</sup>	202	49
July 8 <sup>th</sup> – July 14 <sup>th</sup>	251	49
July 15 <sup>th</sup> – July 21 <sup>st</sup>	278	27
July 22 <sup>nd</sup> – July 28 <sup>th</sup>	302	24
July 29 <sup>th</sup> – August 4 <sup>th</sup>	342	40
August 5 <sup>th</sup> – August 11 <sup>th</sup>	382	40
August 12 <sup>th</sup> – August 18 <sup>th</sup>	403	21
August 19 <sup>th</sup> – August 25 <sup>th</sup>	416	13
August 26 <sup>th</sup> – September 1 <sup>st</sup>	426	10
September 2 <sup>nd</sup> – September 8 <sup>th</sup>	431	5
September 9 <sup>th</sup> – September 15 <sup>th</sup>	444	13
September 16 <sup>th</sup> – September 22 <sup>nd</sup>	445	1
September 23 <sup>rd</sup> – September 29 <sup>th</sup>	447	2
September 30 <sup>th</sup> – October 6 <sup>th</sup>	449	2
October 7 <sup>th</sup> – October 13 <sup>th</sup>	457	8
October 14 <sup>th</sup> – October 20 <sup>th</sup>	464	7
October 21 <sup>st</sup> – October 27 <sup>th</sup>	487	23
October 28 <sup>th</sup> – November 3 <sup>rd</sup>	505	18
November 4 <sup>th</sup> – November 10 <sup>th</sup>	549	44
November 11 <sup>th</sup> – November 17 <sup>th</sup>	604	55
November 18 <sup>th</sup> – November 24 <sup>th</sup>	667	63
November 25 <sup>th</sup> – December 1 <sup>st</sup>	725	58
December 2 <sup>nd</sup> – December 8 <sup>th</sup>	824	99
December 9 <sup>th</sup> – December 15 <sup>th</sup>	962	138
December 16 <sup>th</sup> – December 22 <sup>nd</sup>	1066	104
December 23 <sup>rd</sup> – December 29 <sup>th</sup>	1148	82
December 30 <sup>th</sup> – January 5 <sup>th</sup>	1276	128
January 6 <sup>th</sup> – January 12 <sup>th</sup>	1409	133
January 13 <sup>th</sup> – January 19 <sup>th</sup>	1497	88
January 20 <sup>th</sup> – January 26 <sup>th</sup>	1584	87
January 27 <sup>th</sup> – February 2 <sup>nd</sup>	1630	46
February 3 <sup>rd</sup> – February 9 <sup>th</sup>	1664	34
February 10 <sup>th</sup> – February 16 <sup>th</sup>	1689	25
February 17 <sup>th</sup> – February 23 <sup>rd</sup>	1706	17
February 24 <sup>th</sup> – March 2 <sup>nd</sup>	1711	5
March 3 <sup>rd</sup> – March 9 <sup>th</sup>	1723	12
March 10 <sup>th</sup> – March 16 <sup>th</sup>	1729	6
March 17 <sup>th</sup> – March 23 <sup>rd</sup>	1731	2
March 24 <sup>th</sup> – March 30 <sup>th</sup>	1736	5
March 31 <sup>st</sup> – April 6 <sup>th</sup>	1739	3