



# Tohono O'odham Nation Health Care (TONHC)

## COVID-19 Situation Update: October 6, 2021

### T-Ñukuda Ha'icu Cihañig

This is a rapidly evolving situation. Information is recent as of October 6 at 7:00 and may change as more data becomes available.

#### COVID-19 Data among Members of Tohono O'odham Nation (TON)

Total Pandemic Cases	New Cases This Week	TONHC Percent Positive Tests This Week*	Total Pandemic Deaths **
2,037	12	7.7%	83

#### TONHC COVID-19 Vaccination Program

Number of people fully vaccinated	Total Doses Given to date	Points of Distribution (PODs) Completed	PODs Open This Week
10,085	19,328	312	10

#### What's New?

**TOHONO O'ODHAM NATION CURRENT RISK LEVEL: MODERATE**

Low Transmission	Moderate Transmission	Substantial Transmission	High Transmission
------------------	-----------------------	--------------------------	-------------------

TON offers \$400 to all members who are fully vaccinated by November 19, 2021. Get information at: [www.tonation-nsn.gov](http://www.tonation-nsn.gov), (520) 383-8700 or [tonenrollment@tonation-nsn.gov](mailto:tonenrollment@tonation-nsn.gov). It pays to get vaccinated!

**The CDC currently recommends COVID-19 vaccination for people:**

- Ages ≥12 years
- Who are pregnant, breastfeeding, trying to get pregnant now, or might become pregnant in the future
- Who have been infected with COVID-19 once they recover
- Who received monoclonal antibody treatments (mAB), 90 days after treatment.

**CDC recommends boosters for the following groups:**

- Persons with moderately to severely weakened immune systems receive a 3<sup>rd</sup> dose of Moderna or Pfizer 28 days or longer after the 2nd dose.
- Persons in certain groups who received 2 doses of Pfizer (guidance is only for Pfizer):
  - All individuals 65 years and older, and residents in long-term care settings. Pfizer Booster should be given ≥ 6 months after the second dose.
- Adults 18-64 years with underlying medical conditions or in high-risk work and institutional settings (includes health care workers who fully vaccinated with Pfizer)

Booster doses are not currently recommended for the general public. The FDA is reviewing data on COVID-19 vaccines for younger children. Persons may receive COVID-19 and other vaccines on the same day.

#### Positive COVID-19 Cases

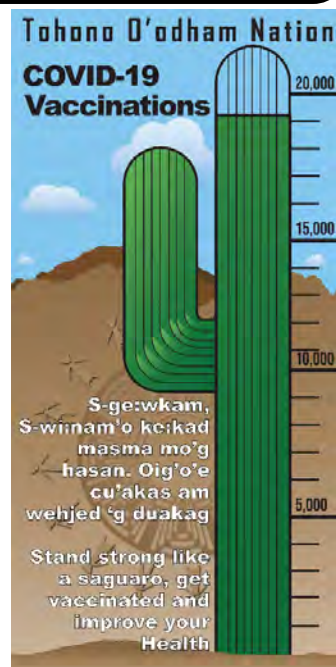
	Enrolled Member of Tohono O'odham Nation	Enrolled Member of Another Tribe or Other	Total
<b>Residing within Boundaries of TON</b>	1370	51	1421
<b>Residing outside Boundaries of TON</b>	667	314	981
<b>Total</b>	2037	365	2402

\*Includes non-TON members tested at TONHC

\*\*Total Pandemic Cases & Deaths include non-tribal community members

TONHC Situation Update 10/06/2021 7:00

**Wear a mask, physically distance, and wash your hands to protect Tohono O'odham Nation**



COVID-19 Vaccinations	Completed COVID-19 Vaccine Series		At Least 1 COVID-19 Vaccine Administered		Population
	Percent (%)	(n)	Percent (%)	(n)	(n)
US Population 12 years & over**	65%		75%		
American Indian/Alaska Native	46%	8,785	52%	9,854	18,947*
Tohono O'odham Nation Member	52%	7,555	58%	8,475	14,625†
Residing on TON	57%	4,915	64%	5,497	8,562#

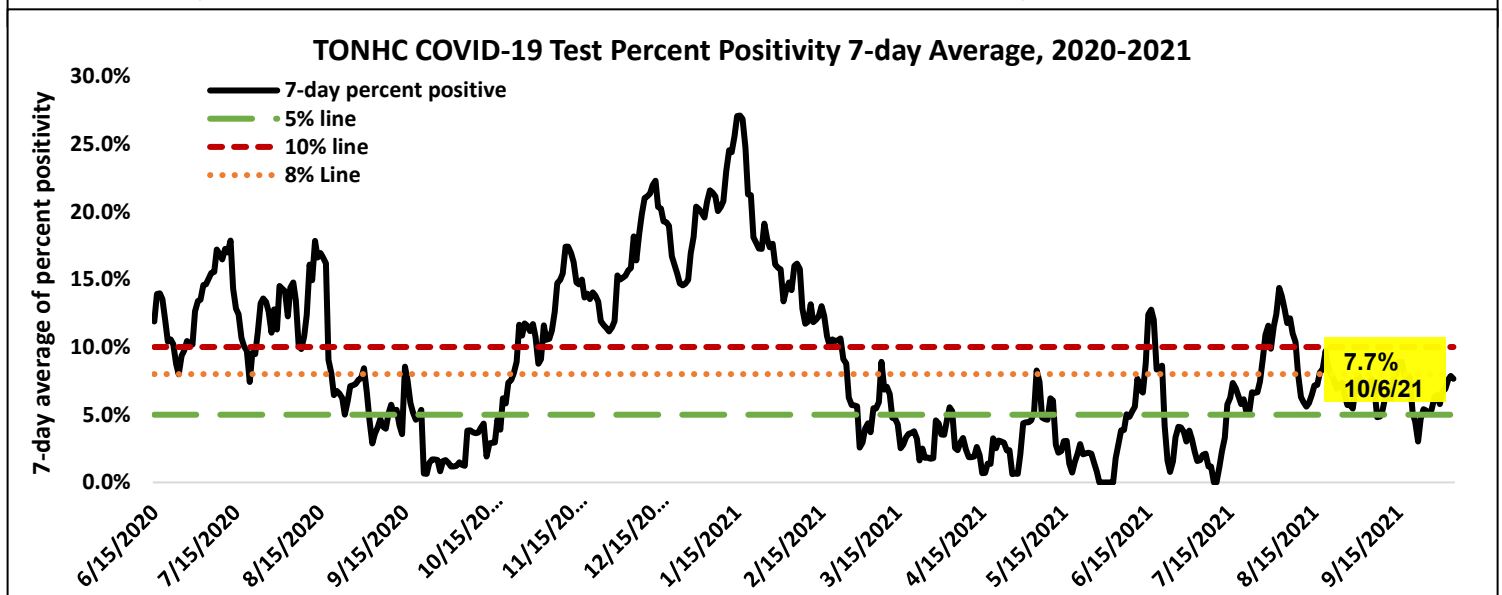
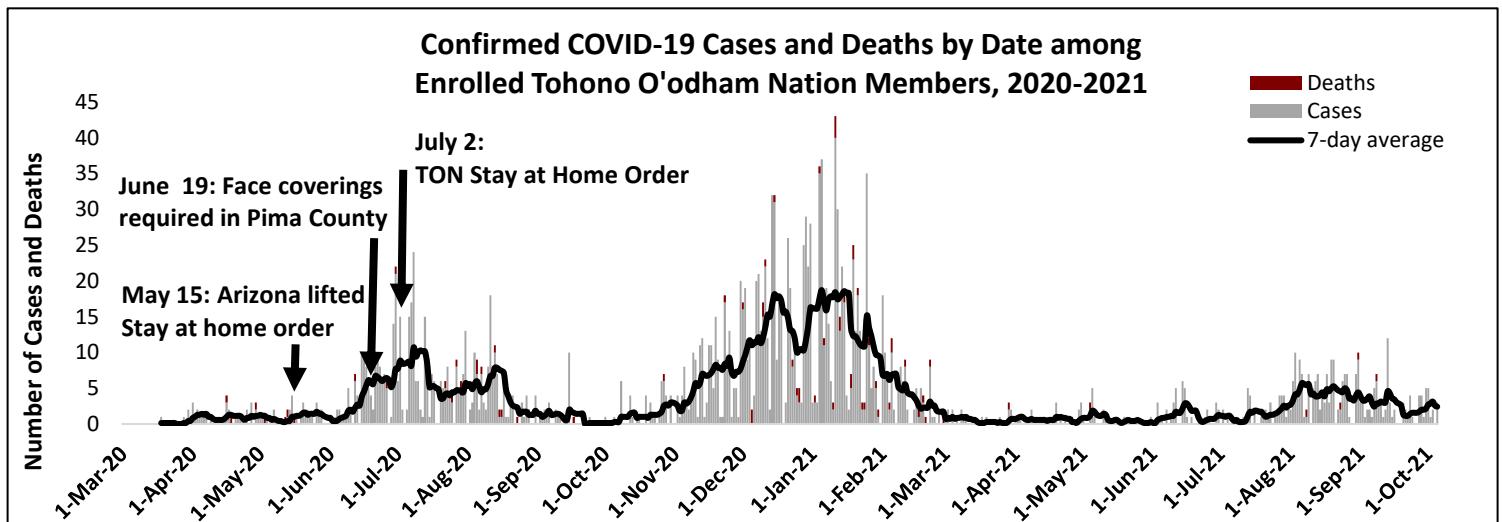
\*American Indian/Alaska Native, vaccine eligible ages 12 years and older, at least 1 visit at TONHC in last 3 years, and TON members receiving vaccine through PIMC

†Enrolled TON member, vaccine eligible ages 12 years and older, at least one visit at TONHC in last 3 years, and TON members receiving vaccine through PIMC

# Enrolled TON members and non-members, vaccine eligible ages 12 years and older, at least one visit at TONHC in last 3 years, residing on TON, including TON members receiving vaccine through PIMC

\*\*CDC | Data as of: September 28, 2021 6:00am ET. Posted: Tuesday, September 28, 2021 8:40 PM ET

COVID-19 Case data	TON	Pima County	AZ
Total Cases	2037	137,208	1,111,359
Number of cases in last 7 days	12	2,302	20,520
Incidence Rate last 7 days (per 100,000)	46	185	240
Percent Positivity last 7 days	7.7%	8.2%	10.4%
Cumulative Incidence Rate (per 100,000)	10,494	13,134	15,459
Number Deaths (% of total cases)	83 (4%)	2,664 (2%)	20,282 (2%)
Number Hospitalized	263	8,400	77,847
Hospitalized (% of total cases)	13%	6%	7%



TONHC Situation Update 10/06/2021 7:00

**Wear a mask, physically distance, and wash your hands to protect Tohono O'odham Nation**

## COVID-19 Vaccination Points of Dispensing (PODs) in TON

Vaccination of all community members is necessary to block COVID-19 transmission, protect personal and public health, and preserve healthcare. COVID-19 vaccines are safe and recommended for everyone aged 12 years and older, including people who have had a prior COVID-19 infection.

**COVID-19 Vaccine is currently available through TONHC to eligible members of the Tohono O'odham Nation and other tribes:**

- TON members or other American Indian/Alaska Native Tribes regardless of employment status or medical diagnoses (photo ID, tribal ID preferred)
- Non-Native persons who work with or live on the TON (bring employee ID or letter from supervisor stating your name, employer, and occupation)
- Non-Native persons who reside in a household with a tribal member (bring proof of residence)
- Must be 12-17 years for Pfizer vaccine or at least 18 years for Moderna and J&J/Janssen vaccines

### Vaccine PODs

TONHC continues to vaccinate through scheduled PODs. Vaccines are also available at TONHC clinics. Safety is a priority. We have medical providers and infection control monitors onsite at all times. Moderna vaccine requires an injection into the upper arm, with a booster shot four weeks later. Pfizer vaccine requires an injection into the upper arm, with a booster shot three weeks later. Janssen vaccine requires one injection into the upper arm, with no booster needed.

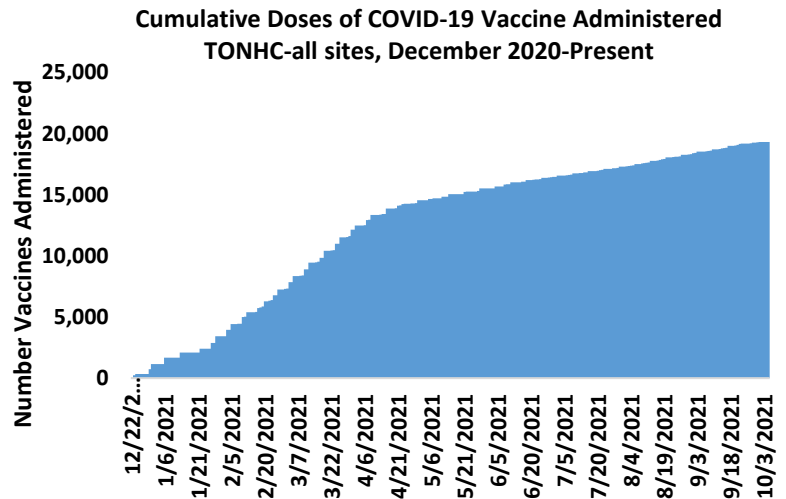
### Upcoming POD events:

**Wednesday, October 6, 2001 – COVID-19 and Flu Vaccination Event at Basha's Plaza from 4 p.m. to 7 p.m.**

**Wednesday, October 13, 2021 - Santa Rosa Health Center Vaccine Clinic from 1 p.m. to 4 p.m.**

### COVID-19 Vaccine Guidelines

Currently, Pfizer, Moderna, and J&J/Janssen vaccines have Emergency Use Authorization (EUA) in the USA. TONHC currently uses Moderna and J&J/Janssen vaccines for adults and the Pfizer vaccine for children ages 12-17. These vaccine brands are shown to be safe and effective to prevent COVID-19 infection and most importantly, prevent very serious cases.



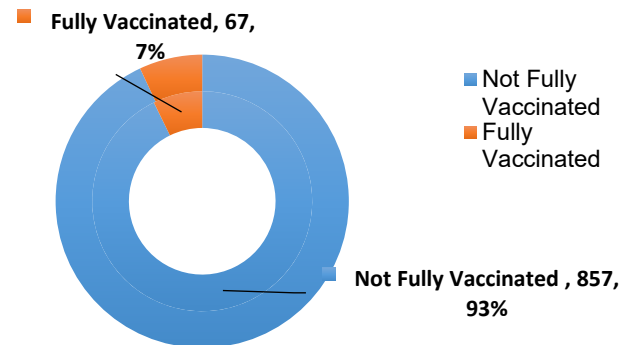
Vaccine	Type	Primary Doses	Authorized for Ages	3 <sup>rd</sup> dose for immunocompromised	Booster
Pfizer *	<a href="#">mRNA</a>	2 doses 3 weeks apart	12+	28 days after completing first 2 doses	6 months*
Moderna	<a href="#">mRNA</a>	2 doses 4 weeks apart	18+	28 days after completing first 2 doses	Not yet
Johnson & Johnson	<a href="#">Viral Vector</a>	1 dose	18+	No recommendation at this time	Not yet

## COVID-19 Brief

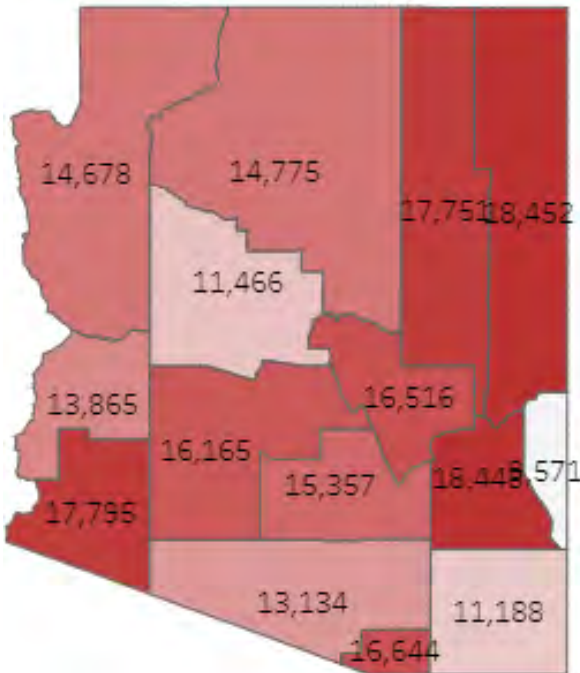
	Enrolled Member of Tohono O'odham Nation	Enrolled Member of Another Tribe or Other	Total
Residing within Boundaries of Tohono O'odham Nation	1370	51	1421
Residing outside Boundaries of Tohono O'odham Nation	667	314	981
Total	2037	365	2402

COVID-19 Case data	TON	Pima County	AZ
Total Cases	2037	137,208	1,111,359
Number of cases in last 7 days	12	2,302	20,520
Incidence Rate last 7 days (per 100,000)	46	185	240
Percent Positivity last 7 days	7.7%	8.2%	10.4%
Cumulative Incidence Rate (per 100,000)	10,494	13,134	15,459
Number Deaths (% of total cases)	83 (4%)	2,664 (2%)	20,282 (2%)
Number Hospitalized	263	8,400	77,847
Hospitalized (% of total cases)	13%	6%	7%

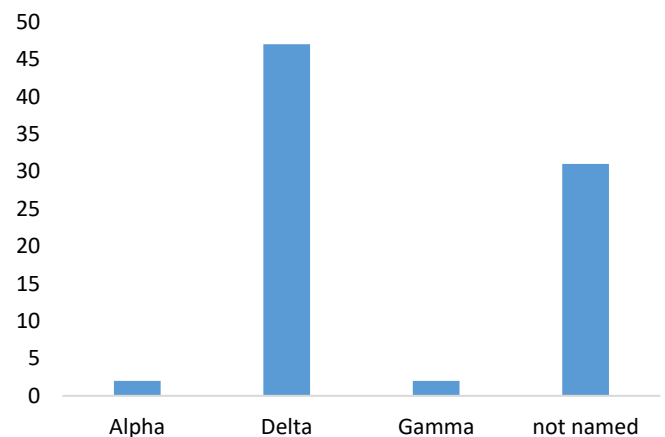
COVID-19 Cases among TON Members by  
Vaccination Status, 2021



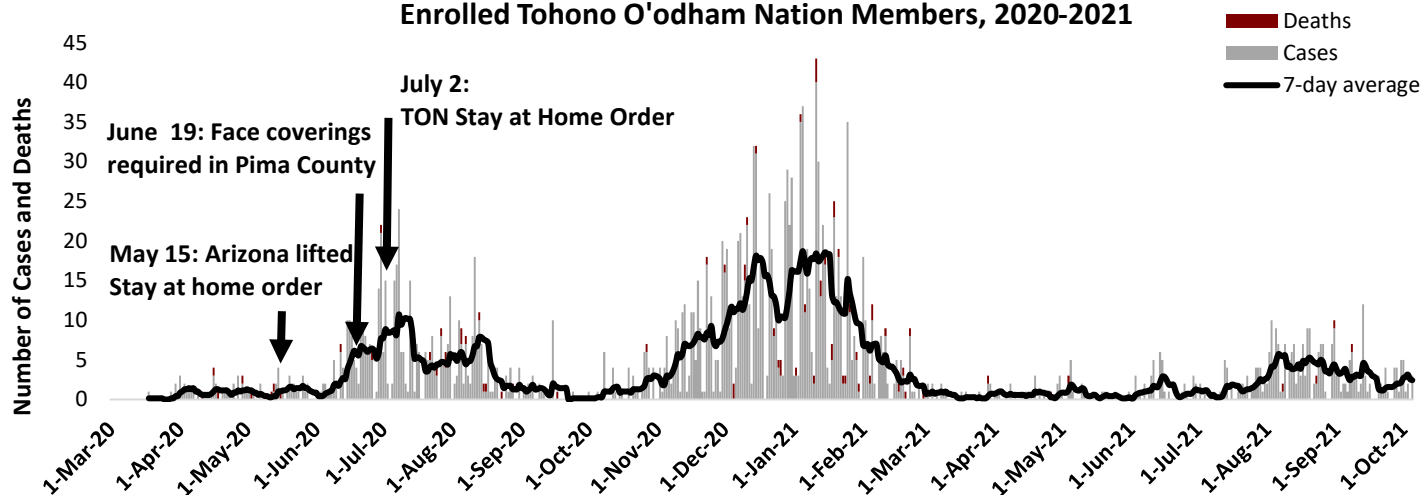
Cumulative Incidence  
Rate per 100K by County



COVID-19 Variants reported from  
TONHC cases, Arizona Department of  
Health Services 2021



## Confirmed COVID-19 Cases and Deaths by Date among Enrolled Tohono O'odham Nation Members, 2020-2021



Weekly test percent positivity is calculated using the day tests were performed and 6-days prior (7-day detected "positive" results)/(7-day total tests performed) x 10

## TONHC COVID-19 Test Percent Positivity 7-day Average, 2020-2021



**18,376 COVID-19 Tests Performed at TONHC**  
**213 Tests Performed in the Past 7 Days**

## Tohono O'odham Nation COVID-19 Positive Case Information

	Enrolled Member of Tohono O'odham Nation	Enrolled Member of Another Tribe or Other	Total
Residing within Boundaries of Tohono O'odham Nation	1370	51	1421
Residing outside Boundaries of Tohono O'odham Nation	667	314	981
Total	2037	365	2402

**2,037** members of the Tohono O'odham Nation have tested positive\* for COVID-19 (as of 10/6/2021 at 7:00). On 9/29/2021, there were 2,025. This represents a less than **1%** increase over the last week.<sup>†</sup> The number of positive cases is **28x** the number 65 weeks ago (72 on 6/9/2020).

**1,370** members of the Tohono O'odham Nation who tested positive reside in the Tohono O'odham Nation. On 9/29/2021, there were 1,363. This represents a less than **1%** increase<sup>†</sup> over the last week. The number of persons who reside in the Tohono O'odham Nation and tested positive for COVID-19 is **57x** the number 65 weeks ago (24 cases on 6/9/2020).

- **1,347** members (66%) are recovering (among members of the Tohono O'odham Nation)<sup>‡</sup>
- **76** deaths among members of the Tohono O'odham Nation and **7** members of another tribe.
- **3** deaths in hospital in Tohono O'odham Nation, **80** in hospitals outside the Tohono O'odham Nation.

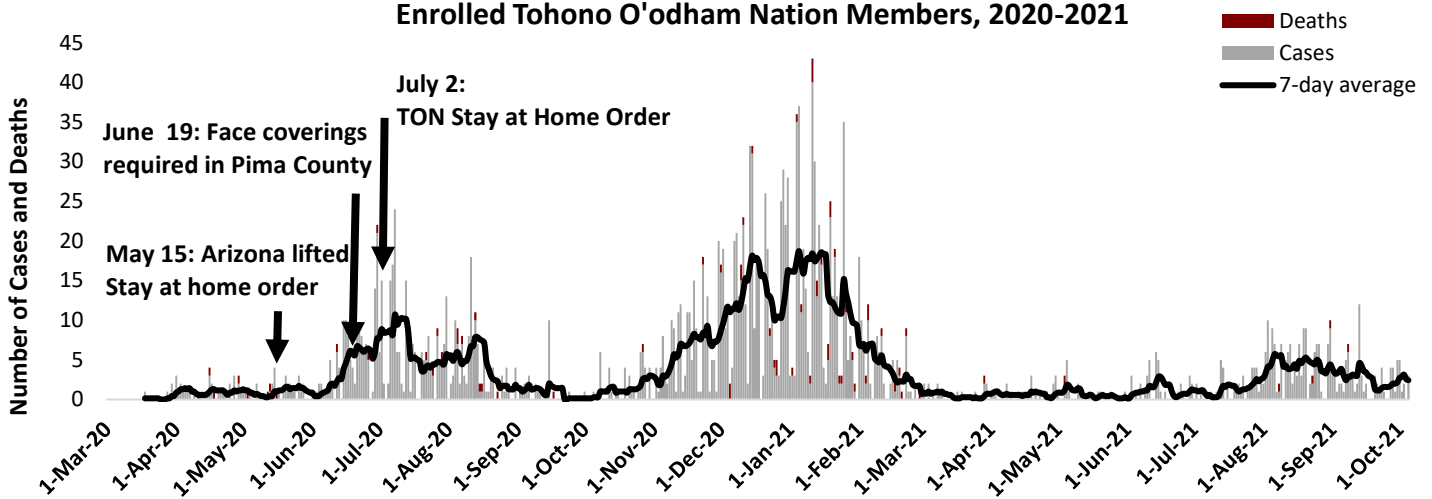
\*COVID-19 positive result means COVID-19 test result of "detected"

<sup>†</sup>Defined as percentage change (most recent number – previous number)/previous number \* 100

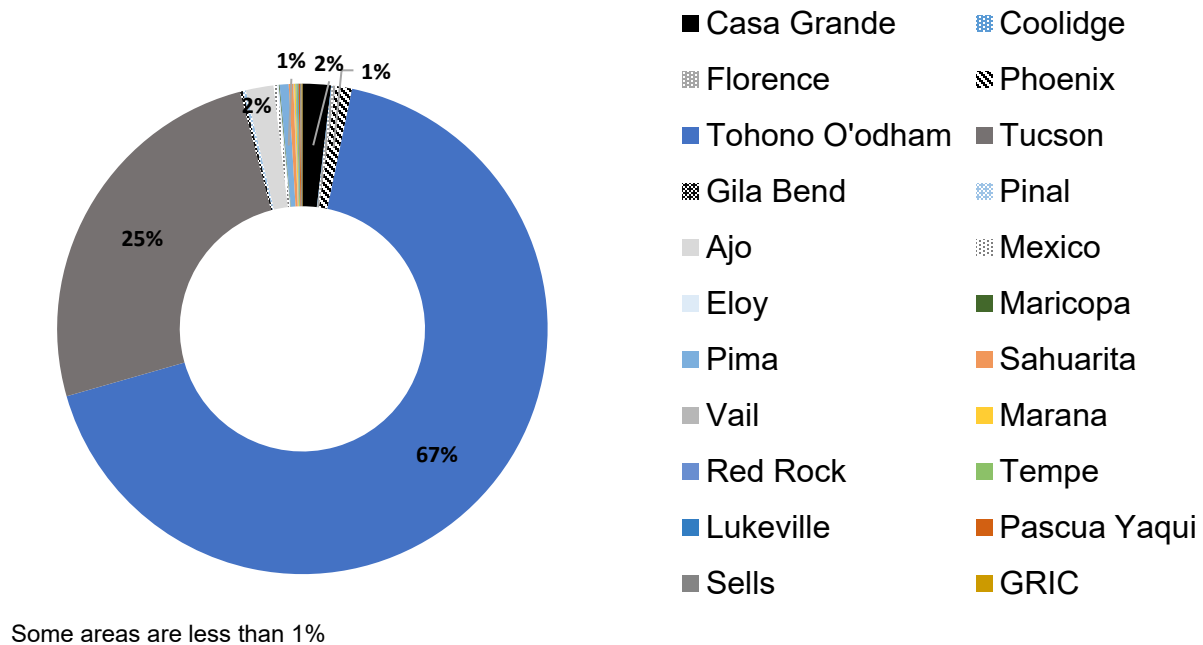
<sup>§</sup>Absolute change in cumulative case count is the number of cumulative cases through week 2 subtracted from the number of cumulative cases through week 1, |week2 – week1|

<sup>‡</sup>Recovering is defined as having diagnosis/symptom onset 14-days ago, improving, and no longer hospitalized  
7-day average is the average of cases for that day and the 6-days prior

### Confirmed COVID-19 Cases and Deaths by Date among Enrolled Tohono O'odham Nation Members, 2020-2021



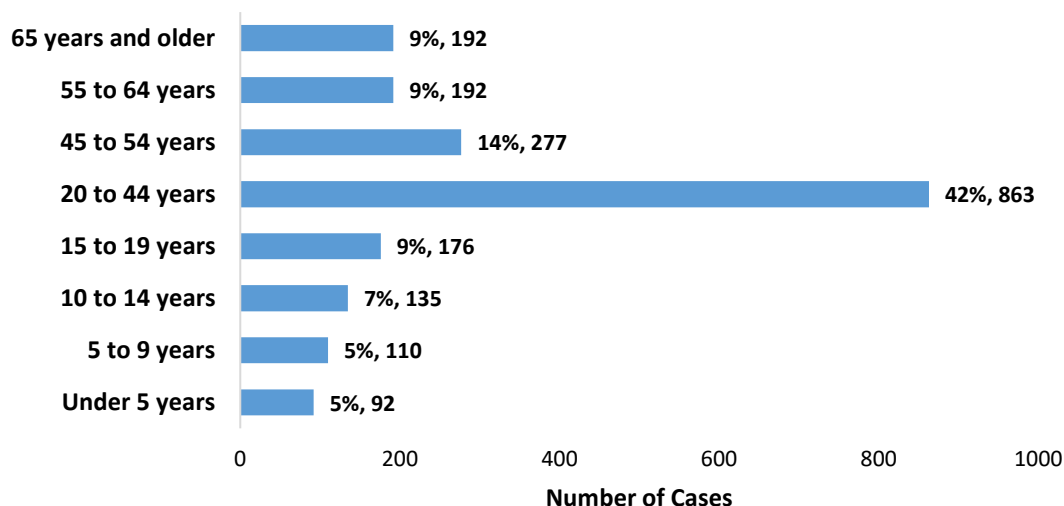
### Region of Residence for COVID-19 Cases among Members of the Tohono O'odham Nation



**7/22/2020 was the first week that the percentage of persons residing in the Tohono O'odham Nation was over 50% of the cases.**



## Age Distribution of COVID-19 Cases among Tohono O'odham Members, 2020-2021



### Laboratory-confirmed COVID-19 among Tohono O'odham Nation Enrolled Members

	Count (n)	Percent (%)	State of Arizona Percent (%)
TON members tested positive for COVID-19	2037		
Asymptomatic/Pre-symptomatic	385	19%	
TON Reside in Reservation	1370	67%	
Hospitalized	263	13%	7%
Recovering	1347	66%	
Died	76	4%	2%

	Median (years)	Minimum (months)	Maximum (years)
Age	33	0	102

	Male	Percent (%)	Female	Percent
Sex	829	41%	1208	59%

At TONHC, we received the first presumptive positive test result for COVID-19 for a patient seen at San Xavier Health Center in the same day clinic on 3/30/2020. In response, we reached out to clinical staff and the patient/household/community to discuss exposure risk, how to monitor for symptoms, and help guide any recommendations for isolation or quarantine. We anticipate more cases in the future, and we are working together to tackle this challenge. Employee health has reached out to staff for contact tracing. Public health nursing has conducted community contact tracing. Please remember to keep patient and employee results confidential.



## COVID-19 Laboratory Testing at TONHC

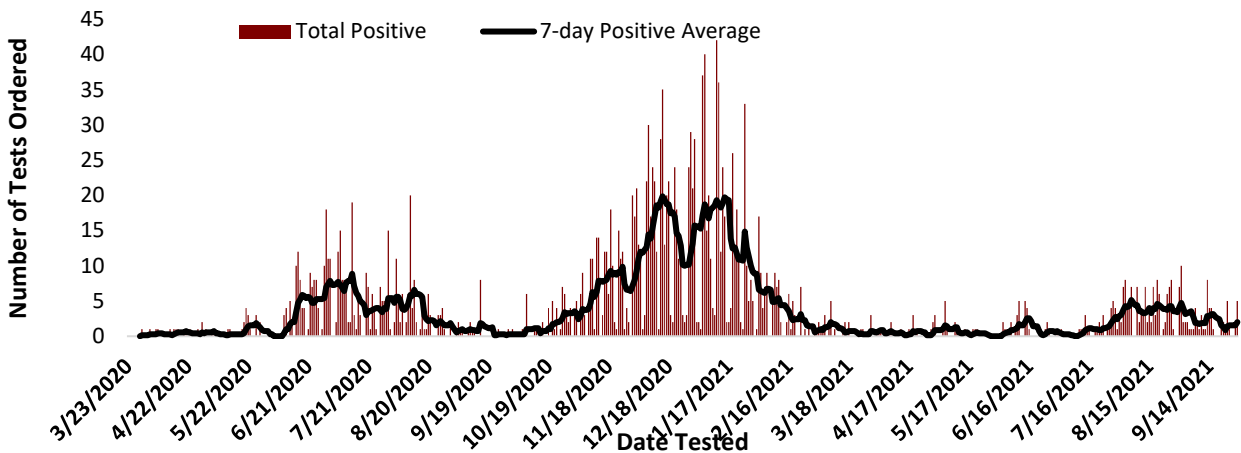
TONHC total number of COVID-19 testing (as of 10/6/2021 at 7:00): **18,376** tests performed:

- 17,140 = patients (anyone who receives care at a TONHC facility)
- 1,137 = employees
- 100 = first responders

On 9/29/2021, 18,163 tests were performed. In the past seven days, TONHC performed 213 tests. As of 10/6/2021, **2,035** tests results were positive\* for COVID-19. On 9/29/2021, there were 2,019 positive tests. The number of positive test results are **54x** the amount compared to 65 weeks ago (since 6/9/2020). 38 total tests were positive on 6/9/2020. There have been **89** positive cases among TONHC employees.

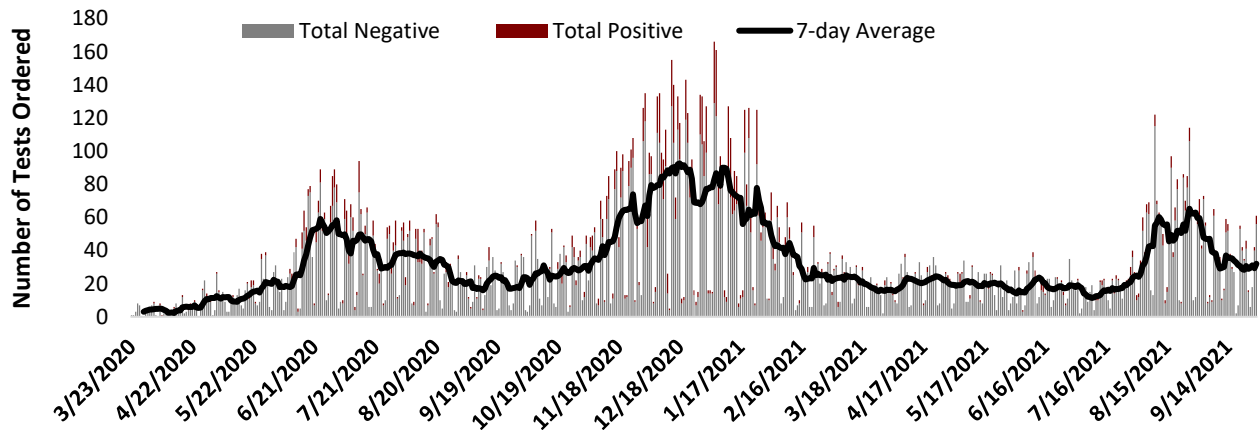
As of 10/6/2021 at 7:00, 10,215 individual TONHC patients have tested for COVID-19. This comprises **51%** of the TONHC User Population. User Population consists of patients who have received care at TONHC at least twice in the past three years.

### COVID-19 Positive Tests Performed at Tohono O'odham Health Care, 2020-2021



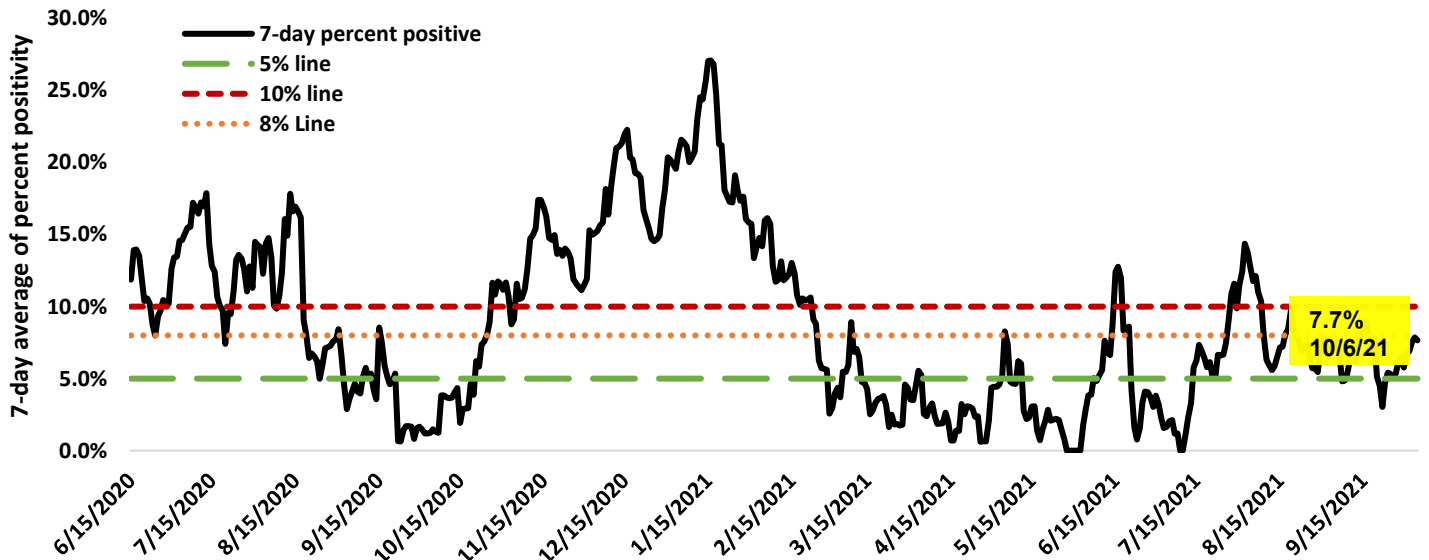
7-day average is the average of cases for that day and the 6-days prior

## COVID-19 Tests Performed at Tohono O'odham Health Care by Result, 2020-2021

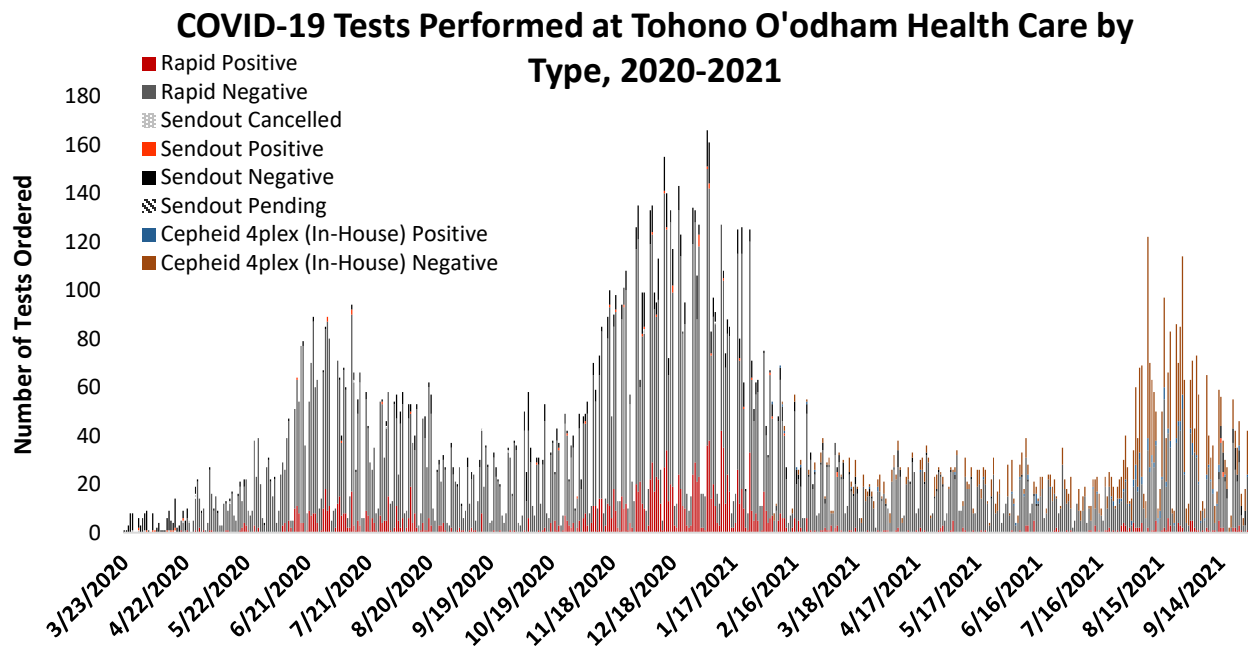


7-day average is the average of cases for that day and the 6-days prior

## TONHC COVID-19 Test Percent Positivity 7-day Average, 2020-2021



\* Weekly test percent positivity is calculated using the day tests were performed and 6-days prior (7-day detected "positive" results)/(7-day total tests performed) x 100%



COVID-19 testing began at TONHC on March 23, 2020. Same-day testing is available at San Xavier, Sells, San Simon, and Santa Rosa. This means all the equipment to run tests are in the clinical laboratories. We began on-site same-day testing on April 20, 2020. There are two different in-house testing platforms currently; same-day/rapid test for symptomatic patients or same-day PCR testing (testing for SARS CoV-2, Flu A, Flu B, and RSV using one swab, starting February 1, 2021). Send-out testing is used for specific cases. Effective 8/1/21, in-house antibody testing was discontinued, however testing can still be ordered and sent to the reference laboratory.

We have eleven on-site Abbott ID NOW™ machines that are used for same-day symptomatic testing and 4 Cepheid analyzers that can perform up to 52 PCR tests at one time for non-symptomatic patients. We continue to pursue additional avenues for more on-site PCR testing. In addition to expanding our testing capabilities, medical assistants at TONHC completed competencies in performing COVID-19 nasal swab testing to assist with performing testing.

\*COVID-19 positive result means COVID-19 test result of “detected” for tests performed at TONHC (San Xavier, San Simon, Sells, and off-site).

†Absolute change in cumulative case count is the number of cumulative cases through week 2 subtracted from the number of cumulative cases through week 1,  $|\text{week2} - \text{week1}|$

## Staying Safe at HOME

Our team strongly recommends to continue prevention measures including avoiding all unnecessary travel and gatherings. We also recommend the use of masks/cloth face coverings for all persons in public settings. Please continue to share the messaging of minimizing group contact, including neighbors and relatives not in one's own household.



**Stay at home as much as possible**



**Practice physical distancing (remaining at least 6 feet away from others)**



**Clean your hands often**

Our testing algorithms aim to identify symptomatic persons, asymptomatic persons with known potential COVID-19 exposures, and persons who will enter high-risk or congregate settings (surgery, detention, foster care, hospitalization, dorms, etc.).

**We all need to do our part and to continue to practice physical distancing and frequent hand hygiene.**

**Please share with community members:**

The best way to prevent illness is to avoid exposure to this virus. These simple actions will lessen your chances of catching COVID-19 and spreading it to others:



- Everyone should wear a mask/cloth face covering in public when physical distancing of 6 feet is not possible (except children ages less than 2 years and persons with a medical contraindication).
- Limit direct physical contact to only persons who live in the same household.
- Avoid all group activities/gatherings, even relatives if they do not live with you until further notice.
- Maintain “stay at home” behavior except for essential needs.
- Report illnesses and possible COVID-19 exposures immediately to your provider.
- Frequently wash hands with soap and water, and use alcohol-based hand sanitizer if unable to wash hands.

### Symptoms to Monitor



COVID-19 symptoms to monitor for: fever, chills, cough, difficulty breathing (shortness of breath), runny/stuffy nose, sore throat, headaches, fatigue, abdominal pain, vomiting, diarrhea, new loss of taste or smell. If you have any of these symptoms, please stay home and do not go to work, school, or be in public areas.

### Face Mask Guidance in the Community Setting



**DO**

#### How to make sure your mask works the best it can

1. **Make sure your mask fits snugly against your face.** Gaps can let air with respiratory droplets leak in and out around the edges of the mask
2. **Pick a mask with layers to keep your respiratory droplets in and others' out.** A mask with layers will stop more respiratory droplets getting inside your mask or escaping from your mask if you are sick.



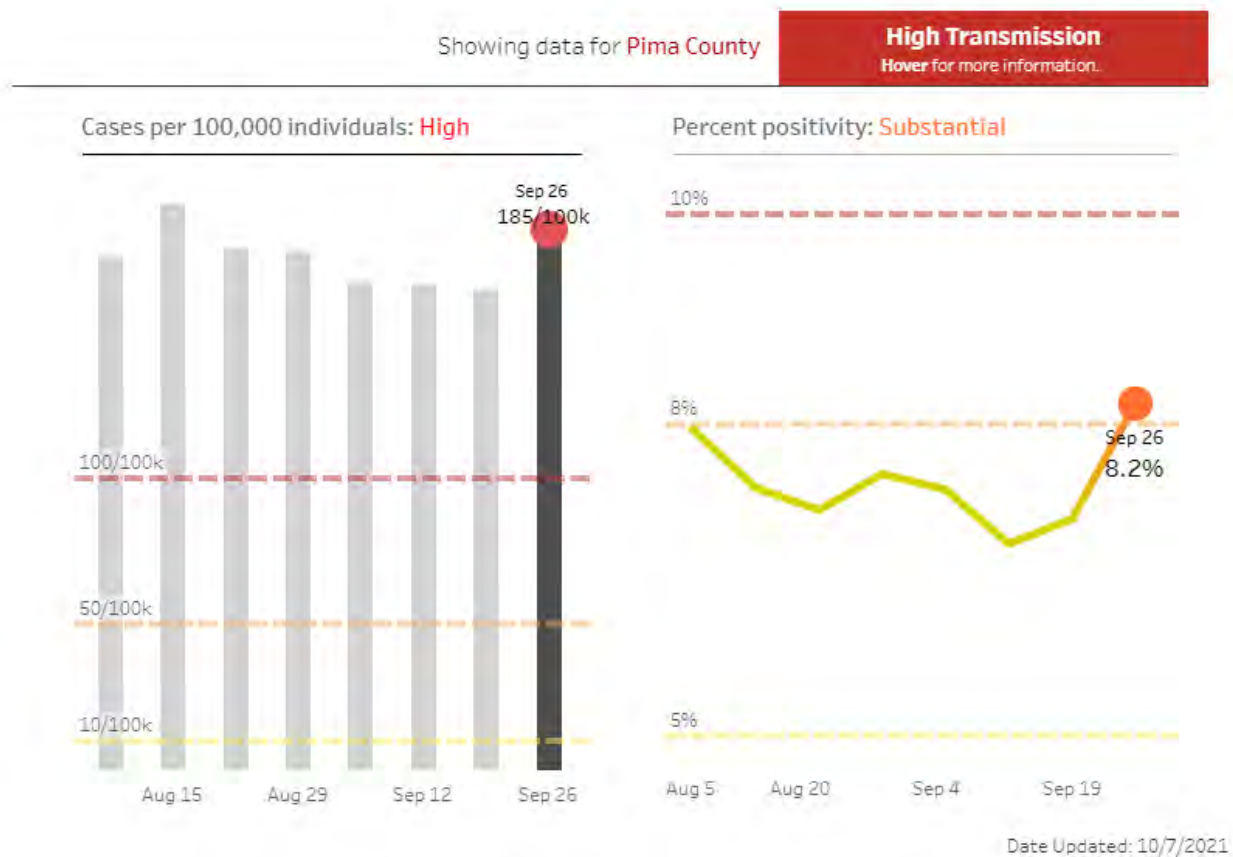
- Choose a mask with a **Nose Wire**
  - A nose wire is a metal strip along the top of the mask
  - Nose wires prevent air from leaking out of the top of the mask.
  - Bend the nose wire over your nose to fit close to your face.
- Use a **Mask Fitter or Brace**
  - Use a mask fitter or brace over a disposable mask or a cloth mask to prevent air from leaking around the edges of the mask.
- Check that it **Fits Snugly** over your nose, mouth, and chin
  - Check for gaps by cupping your hands around the outside edges of the mask.
  - Make sure no air is flowing from the area near your eyes or from the sides of the mask.
  - If the mask has a good fit, you will feel warm air come through the front of the mask and may be able to see the mask material move in and out with each breath.
- Add **Layers** of material
  - 2 ways to layer
    - Use a cloth mask that has multiple layers of fabric.
    - Wear one disposable mask underneath a cloth mask.
  - The second mask should push the edges of the inner mask against your face.
- **Make sure you can see and breathe easily**
  - **Knot and Tuck** ear loops of a 3-ply mask
    - Knot the ear loops of a 3-ply face mask where they join the edge of the mask
    - Fold and tuck the unneeded material under the edges
- For video instructions, see: <https://youtu.be/UANi8Cc71A0><sup>external icon</sup>.



Adapted from: <https://www.cdc.gov/coronavirus/2019-ncov/your-health/effective-masks.html> Accessed 2/24/2021

## Arizona COVID-19 School Benchmarks

On March 2<sup>nd</sup>, 2021 CDC announced updated school guidance. The Arizona Department of Health Developed Community Transmission to Reflect Level of Community Risk: CDC recommends the use of two measures of community burden to determine the level of community transmission. These measures assess the incidence and spread of COVID-19 in the community, not the school itself. Risk is dependent on community level transmission **and** implementation of school and community mitigation strategies.



Indicator	Low Transmission	Moderate Transmission	Substantial Transmission	High Transmission
Total new cases per 100,000 persons in the last 7 days	0 – 9	10 – 49	50 – 99	≥ 100
Percentage of nucleic acid amplification tests (NAATs) that are positive during the past 7 days	<5.0%	5.0% – 7.9%	8.0% – 9.9%	≥ 10.0%

Arizona Department of Health Services, <https://www.azdhs.gov/documents/preparedness/epidemiology-disease-control/infectious-disease-epidemiology/novel-coronavirus/schools/school-benchmarks.pdf>, accessed 3/11/21.

## COVID-19 GUIDANCE ON HOME ISOLATION AND QUARANTINE

Tohono O'odham Nation Health Care has updated guidance on isolation and quarantine to align with recent changes to CDC recommendations. For reference, quarantine is defined as separating yourself from all persons in your home if you may have been exposed to the virus. Isolation refers to being symptomatic or infected with the virus, and separating yourself from all persons in your home.

### **Quarantine Guidance (as of 8/5/2021)**

#### **Health care workers at TONHC: if fully vaccinated and close contact exposure, and no symptoms (asymptomatic)**

- Get tested by COVID-19 PCR on Day 5 (or as close to day 5 as possible) to determine if transmission occurred
- Can continue to go to work
- Facemask to be worn at all the time around others for 14-calendar days post exposure and per TONHC policy. Note: all health care workers are required to wear a surgical facemask at all times at TONHC.
- If healthcare worker develops COVID-19 related symptoms (e.g., fever of  $\geq 100.0$  degrees Fahrenheit or respiratory symptoms), they must cease patient care activities immediately, notify their supervisor and employee health, and leave worksite to prevent exposure of others.

Note: all health care workers are to check for symptoms and fever prior to working. Do not come to work if you have symptoms.

#### **Community members: if fully vaccinated and close contact exposure, and no symptoms (asymptomatic)**

- Quarantine immediately, stay home until end of quarantine.
- Get tested by PCR at least 5 days from exposure (test at 5 days after exposure and up to day 14)
- In some cases, quarantine can end after 7 full days, if negative test result and no symptoms (if test done within 48 hours of end of quarantine date). Your medical provider or public health team will let you know the end of the quarantine date.
- If not tested for any reason or at the recommendation of public health nursing or medical provider, quarantine may end 10 full days from COVID-19 exposure
- Facemask to be worn at all times when around other people for 14-calendar days post exposure

#### **Community members: if unvaccinated and close contact exposure, and no symptoms (asymptomatic)**

- Quarantine immediately, stay home until end of quarantine.
- Get tested by PCR at least 5 days from exposure (test at 5 days after exposure and up to day 14)
- Quarantine will end 10 full days from COVID-19 exposure
- In some special cases, quarantine can end after 7 full days, if negative test result and no symptoms (if test done within 48 hours of end of quarantine date). Your medical provider or public health team will let you know the end of your quarantine date.
- Facemask to be worn at all times when around other people for 14-calendar days post exposure

\*Special exception: Must quarantine for 14 days if in a congregate setting



**Close contact exposure:** within 6 feet for a cumulative total of 15 minutes or more over a 24-hour period

**Close contact exposure for health care worker** includes in addition: prolonged exposure to patients with COVID-19 infection when the health care workers eyes, nose, or mouth are not covered (not wearing appropriate PPE).

<https://www.cdc.gov/coronavirus/2019-ncov/hcp/guidance-risk-assessment-hcp.html>

For more information on home isolation guidance, please contact TONHC Public Health Nursing Department.

## Coronavirus Disease 2019 (COVID-19): HOME ISOLATION GUIDANCE

**If you tested positive for COVID-19, you need to stay in ISOLATION:**

**Isolation** is for people who have tested **positive** or have symptoms consistent with COVID-19 and are waiting to be tested or diagnosed. It prevents the spread of COVID-19 by asking people who have COVID-19 (or those with symptoms) to stay away from others until they have fully recovered and can no longer transmit the virus. You should stay in a specific "sick room," if possible, and away from other people in your home.

If you tested **POSITIVE** for COVID-19 **or** have symptoms of COVID-19, you should stay **isolated** at home for a specified period of time – usually around 10 days.

**Stay isolated** means you need to:

- **Separate** yourself from others in your home, as much as possible. Stay in a separate room and use a separate bathroom, if possible. If you cannot separate from others at home, you need to wear a mask.
- **Do not attend** work, school, be in public areas or use public transportation.
- **Avoid sharing** household items like dishes, cups, eating utensils, and bedding.
- **Cover** coughs and sneezes with a tissue or your elbow. Throw away used tissues in the trash and wash your hands.
- **Avoid touching** your eyes, nose, and mouth.
- **Wash your hands** often with soap and warm water for at least 20 seconds.
- **Clean** high-touch surfaces (tables, doorknobs, light switches, countertops, handles, desks, phones, keyboards, toilets, etc.) daily.
- **Reschedule** all non-essential medical appointments. If you need medical care, call your provider **before going**, and tell them about your illness.
- **Monitor** your symptoms and seek medical care if your illness is worsening.

**The number of days you need to stay isolated at home depends on:**

- Your COVID-19 test result;
- Your symptoms;
- If you were a close contact of someone with COVID-19;
- How sick you were; and
- If you are severely immunocompromised.

**Symptoms of COVID-19** can range from mild to severe illness, may appear 2 – 14 days after exposure and may include:

Fever or chills	Shortness of breath or difficulty breathing	New loss of taste or smell
Cough	Muscle or body aches	Headache
Nausea or vomiting, diarrhea	Sore Throat	Congestion or runny nose
		Fatigue

**Close Contacts** are people who were **within 6 feet** of a person with COVID-19 while infectious for a **cumulative total of 15 minutes or more over a 24-hour period** or who had **physical contact** with a person with COVID-19 while infectious, regardless of whether masks were worn.

Please look at the chart on the back of this sheet to help you figure out how long you should stay **isolated** at home. →

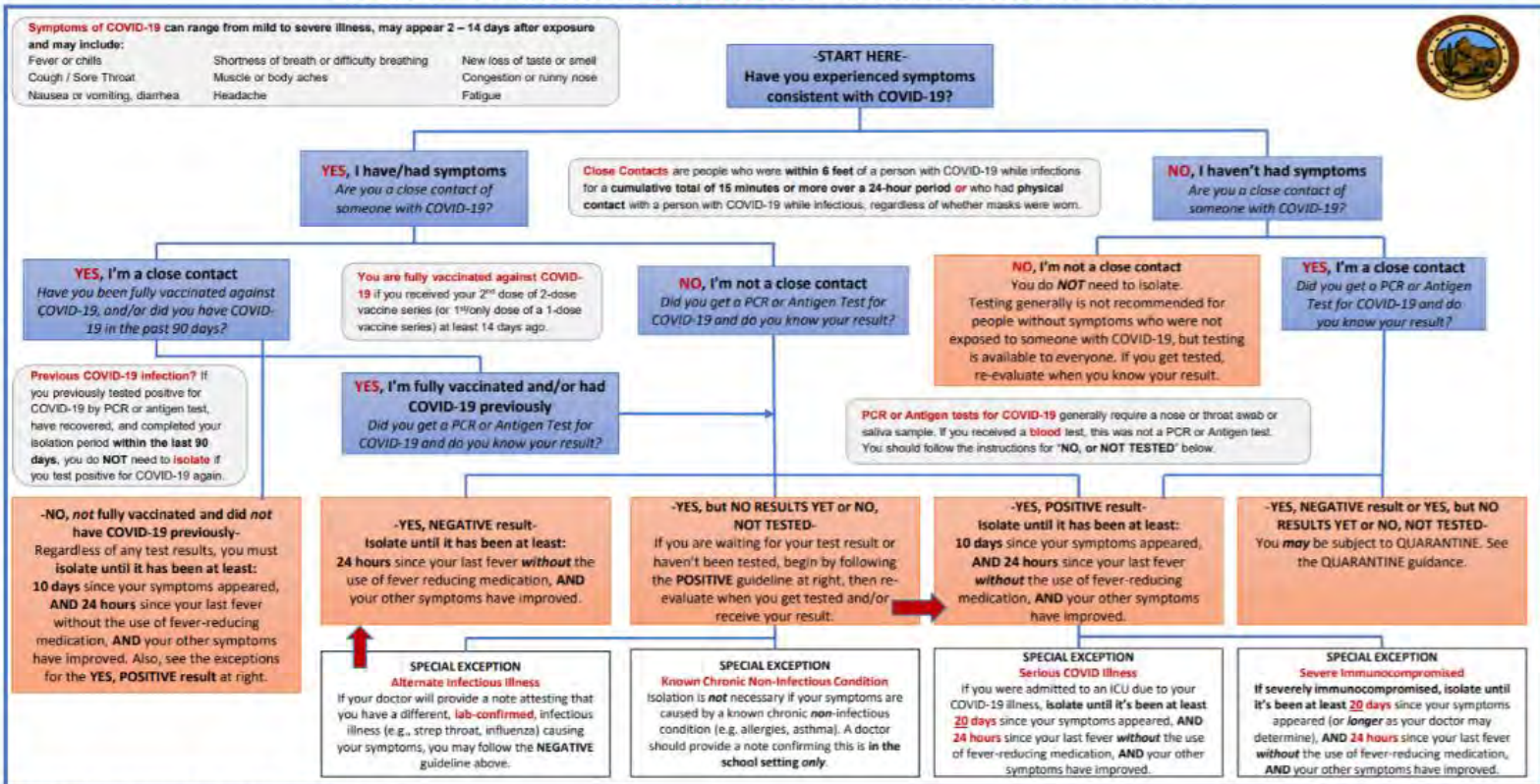
Contact your healthcare provider or Public Health Nursing for any questions. You can also review the CDC website at: <https://www.cdc.gov/coronavirus/2019-ncov/symptoms-testing/symptoms.html>

### TOHONO O'ODHAM NATION HEALTH CARE

Updated 5/4/2021 (Subject to change as new information becomes available. Please look for the most up-to-date recommendations).



# COVID-19 Home Isolation Guidance Flow Chart

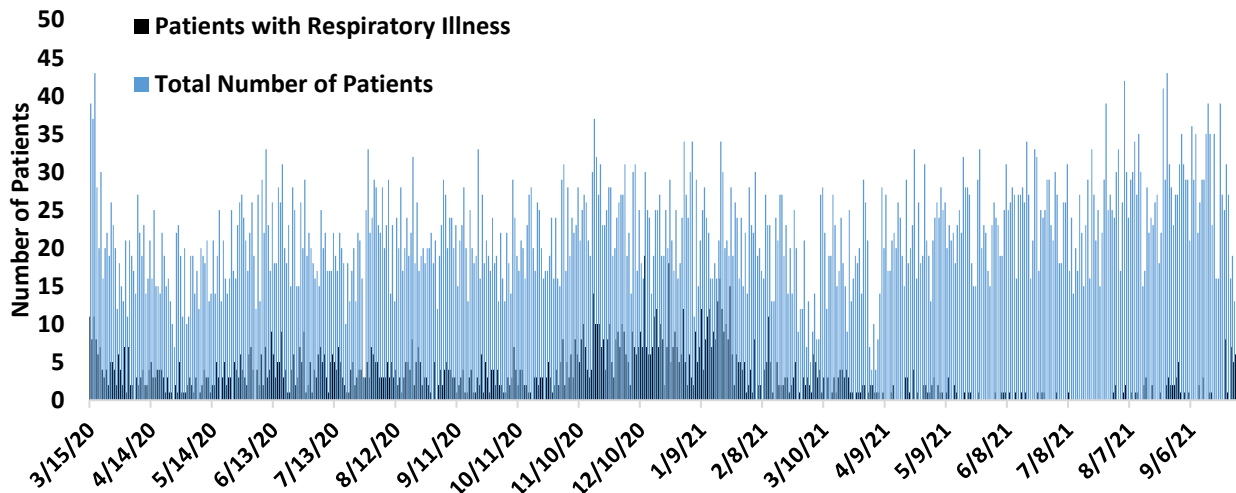


**TOHONO O'ODHAM NATION HEALTH CARE**

Updated 5/4/2021 (Subject to change as new information becomes available. Please look for the most up-to-date recommendations).

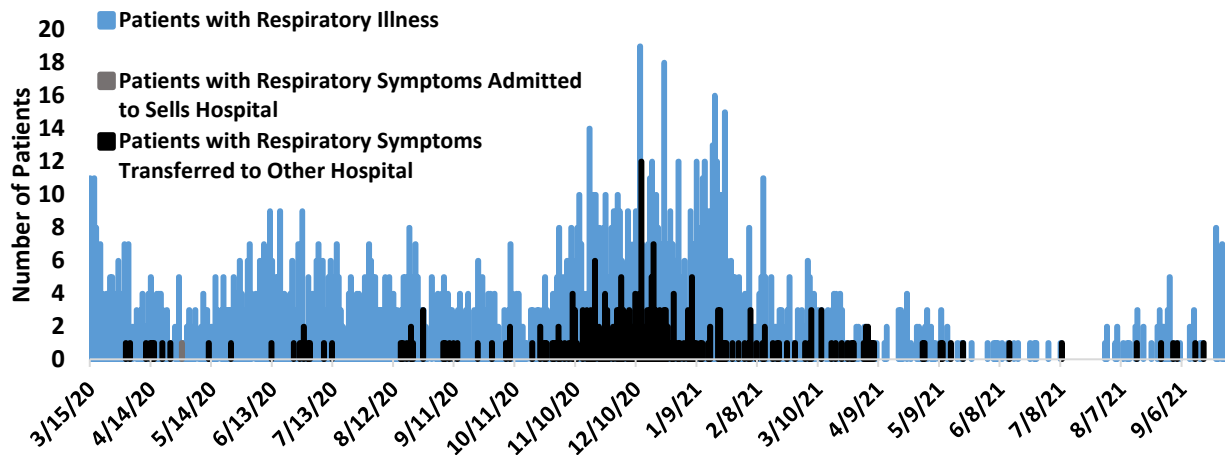
# Sells Emergency Department Syndromic Surveillance

**Patients Presenting with Respiratory Illness and Daily Totals, Sells  
Emergency Department, 2020-2021**



Syndromic surveillance refers to detection of indicators that are discernible before confirmed diagnoses are made. For example, an increase in the number of patients seen with respiratory symptoms could be an indicator of COVID-19. There were 27 patients seen in Sells Emergency Department with respiratory symptoms during the week of 9/22/2021- 9/28/2021.

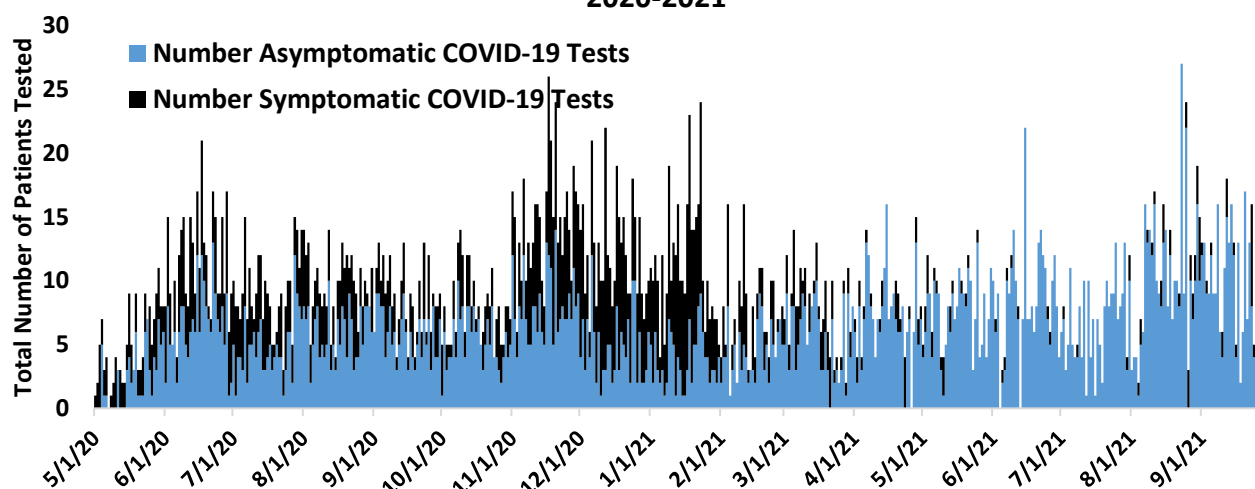
**Patients Presenting with Respiratory Illness and Number of Patients  
Transferred/Admitted from Emergency Department to Inpatient Hospital,  
Sells Emergency Department, 2020**



As of 9/28/2021, there were 2 admissions to Sells Hospital and 253 outside transfers for respiratory symptoms from Sells Emergency Department. The number of patients transferred from the emergency department to hospital inpatient units helps to identify severity of disease among the population. This is a level of disease severity that requires a higher level of care, such that care must be managed in the hospital (e.g. with oxygen, mechanical ventilation, etc.).

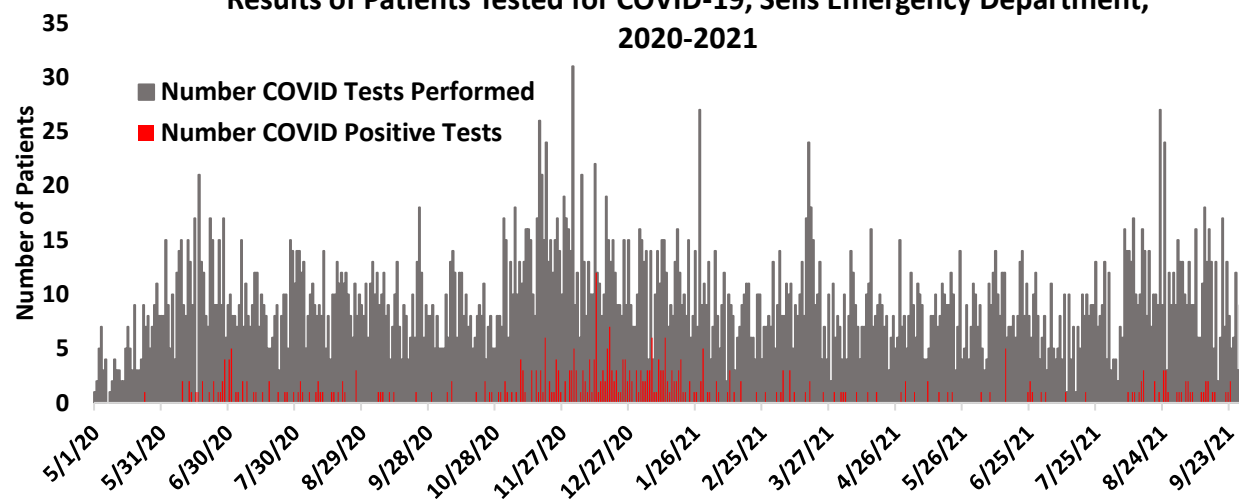


### Patients Tested for COVID-19, Sells Emergency Department, 2020-2021



Same-day COVID-19 testing began on 4/20/20. From 9/22/21– 9/28/21, between 16 and 31 patients were seen each day in the emergency department. Asymptomatic tests are performed on people who have no symptoms (no cough, no diarrhea, no fever, etc.). Symptomatic tests refer to tests performed on people who have symptoms (cough, fever, diarrhea, etc.) of COVID-19.

### Results of Patients Tested for COVID-19, Sells Emergency Department, 2020-2021



The week of 9/22/21 – 9/28/21, 3 persons seen in the emergency department tested positive for COVID-19. There have been 381 total positive test results from tests performed in Sells emergency department as of 9/29/2021, 7:00.

Door to transfer time is the amount of time it takes to transfer a patient to another facility for higher level care from the time they entered the emergency department. Due to COVID-19, many hospitals have limited bed availability, and the door to transfer time has increased. For Sells Emergency Department:

Door to transfer time in June 2021 was 262 minutes.

Door to transfer time in July 2021 was 292 minutes.

Door to transfer time in August 2021 was 402 minutes.

Due to recent increased COVID-19 cases, many facilities have less beds available and are unable to receive patients as quickly.

## EMPLOYEE HEALTH

**All employees at TONHC must wear a procedure/surgical mask while at work. All employees in patient care areas must wear a procedure/surgical mask and eye protection. All employees in areas with patients with suspected or confirmed COVID-19 must wear N95 respirator, eye protection, gloves, and gown.**

**There have been 89 Cases of COVID-19 among TONHC employees.** Each positive result has prompted an internal and external investigation and contact tracing. Based on these investigations, transmissions were more likely due to community spread. Employees possibly exposed are tested for COVID-19.

All employees are required to contact Employee Health with any call-outs. This is to ensure that employees are tested for COVID-19 if sick or exposed and given appropriate guidance on when to return to work. Employees are also required to contact their supervisor when they call out.

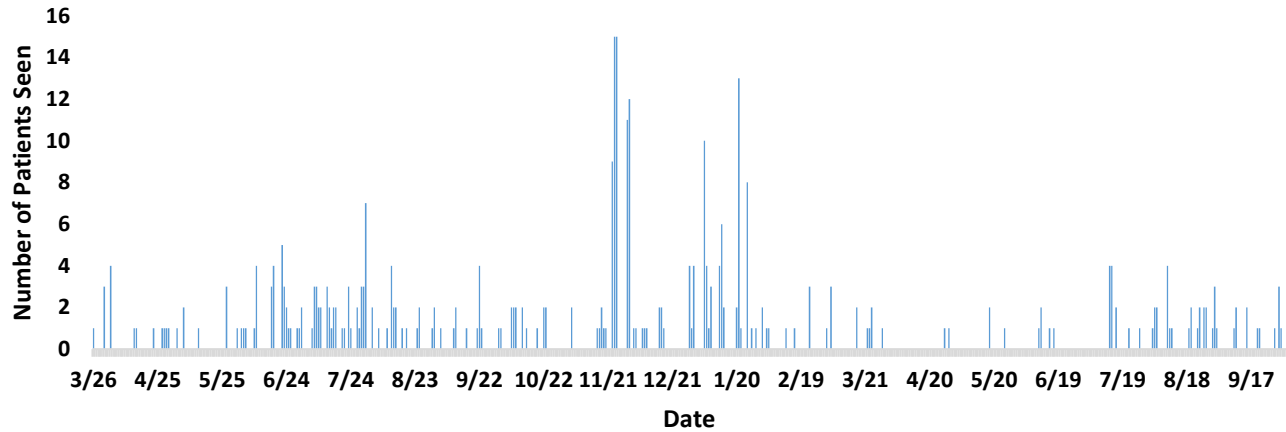
## TONHC Infection Control

Infection control prevents or stops the spread of infections in healthcare settings. TONHC COVID-19 infection control team monitors, tracks, and provides guidance on personal protective equipment (PPE such as gowns, gloves, face shields, N95 respirators).

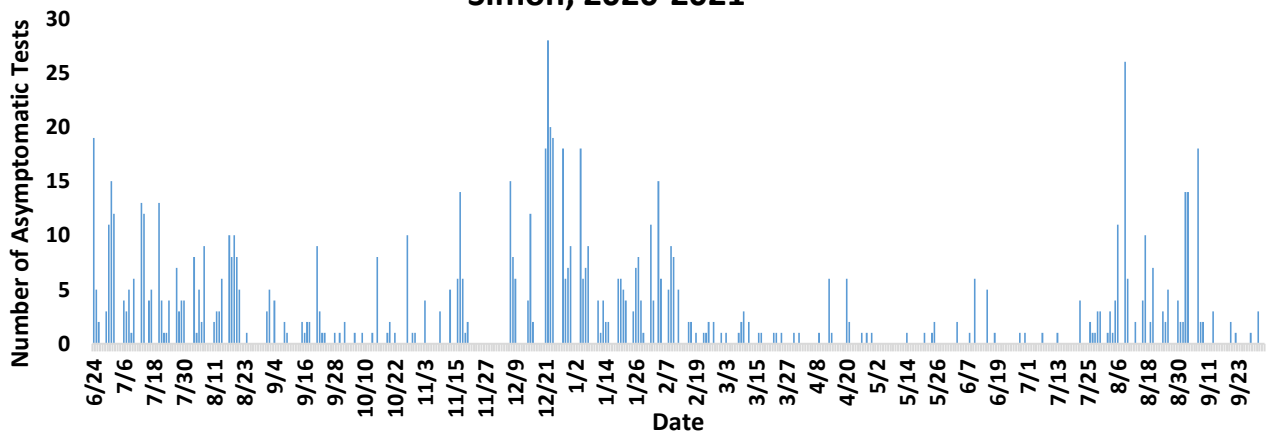
- At the San Xavier, Sells, and San Simon Health Care Centers, the Battelle CCDS Critical Care Decontamination System™ program ended on 3/31/21 and now contingency N95 strategies are in use.
- All staff are wearing procedure/surgical masks, and staff caring for patients are also wearing eye protection.
- Staff caring for patients that have or may have been exposed to COVID-19 are wearing gowns, gloves, face shields or other eye protection, and N95 respirators or Powered Air Purifying Respirators (PAPRs).

## CLINIC – SAN SIMON

**Number of Patients seen at San Simon Respiratory Clinic,  
2020-2021**



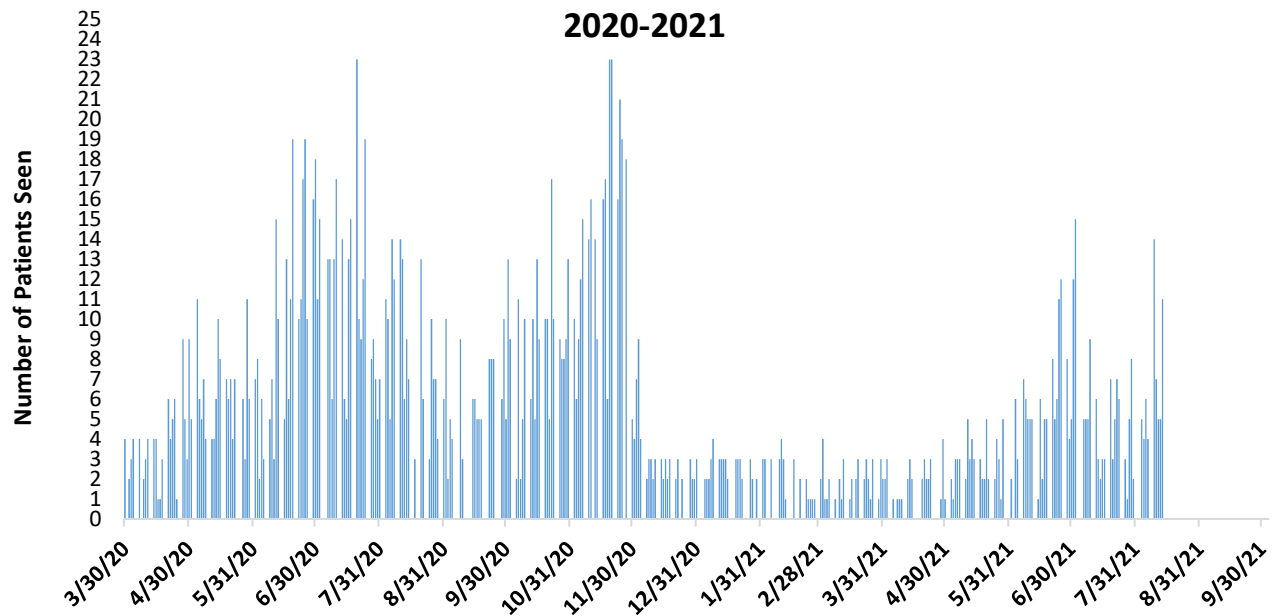
**Number of COVID-19 Asymptomatic Tests Performed at San  
Simon, 2020-2021**



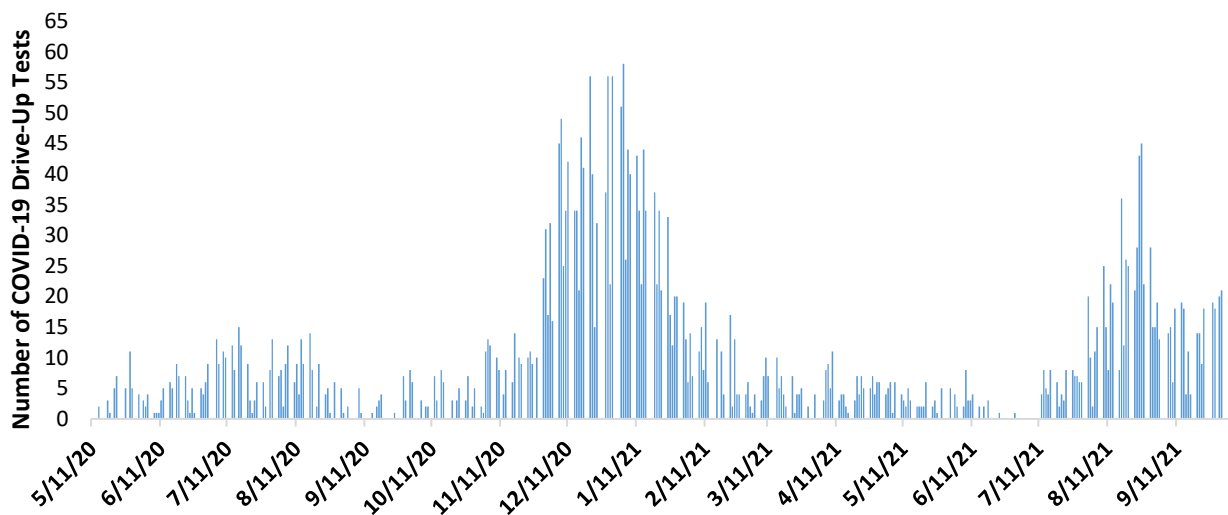
These are the number of COVID-19 tests performed on patients that have no symptoms of COVID-19 (no fever, no cough, no difficulty breathing, etc.), or patients who are symptomatic but only desire to be tested. They are performed on people who have may have had exposure to COVID-19, are entering a congregate setting, or are going to be admitted to the hospital.

## CLINIC – SAN XAVIER

**Number of Patients seen at San Xavier Respiratory Clinic,  
2020-2021**



**Number of Drive-Up COVID-19 Tests Performed at San Xavier  
Respiratory Clinic, 2020-2021**

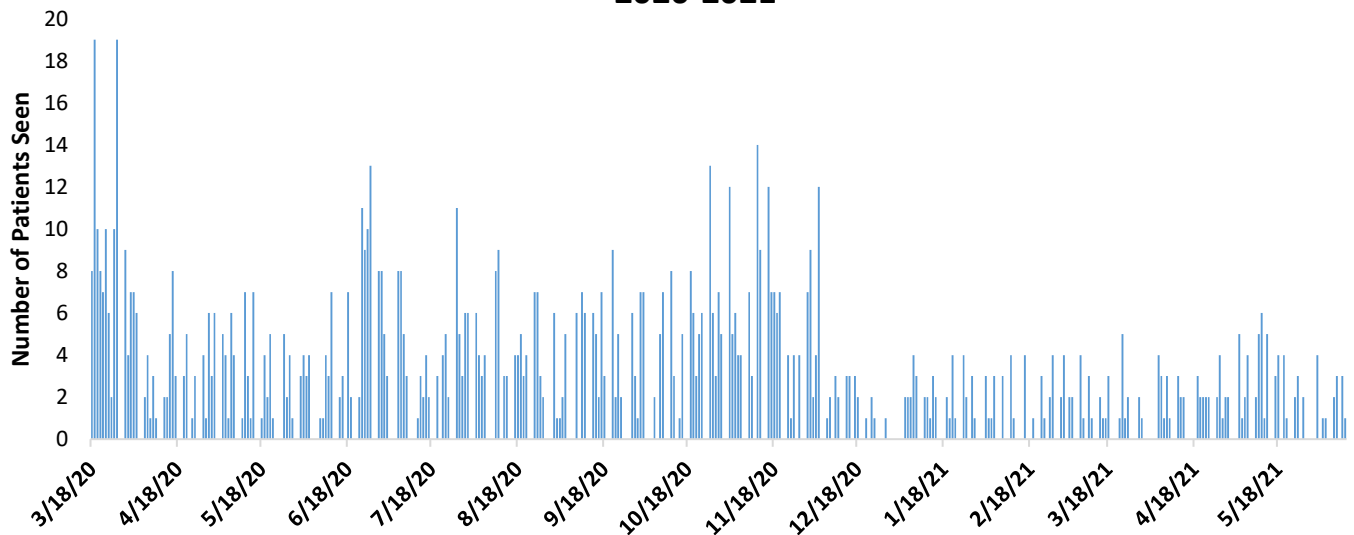


Drive-Up testing includes both symptomatic and asymptomatic patients, with testing for symptomatic patients beginning in November at San Xavier Clinic. Asymptomatic testing is for patients that have no symptoms of COVID-19 (no fever, no cough, no difficulty breathing, etc.). They are performed on people who may have had exposure to COVID-19, are entering a congregate setting, or are going to be admitted to the hospital. Patients who have COVID-19 symptoms may be offered a drive up test instead of a Respiratory Clinic visit.

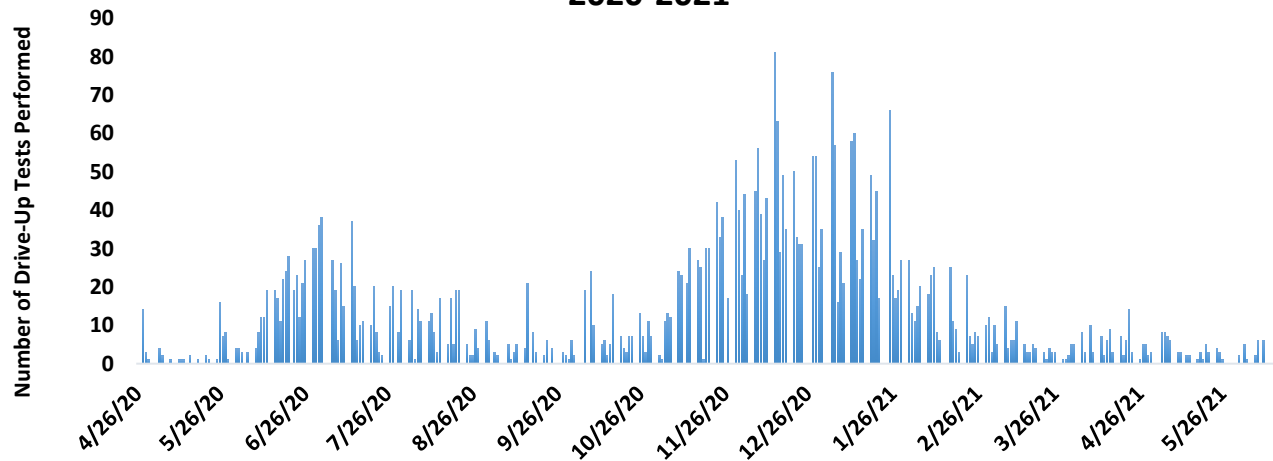


## CLINIC – SELLS

### Number of Patients seen at Sells Respiratory Clinic, 2020-2021



### Number of Drive-Up COVID-19 Tests Performed at Sells Clinic, 2020-2021



Drive-Up testing includes both symptomatic and asymptomatic patients, with testing for symptomatic patients beginning on 11/23/2020 at Sells Hospital. Asymptomatic testing is for patients that have no symptoms of COVID-19 (no fever, no cough, no difficulty breathing, etc.). They are performed on people who may have had exposure to COVID-19, are entering a congregate setting, or are going to be admitted to the hospital. Patients who have COVID-19 symptoms may be offered a drive up test instead of a Respiratory Clinic visit.

Due to changes in scheduling formats, covid testing rates for Sells Hospital are currently unavailable.

## SELLS INPATIENT UNIT

To minimize possible exposure and conserve personal protective equipment, visitors are not allowed on the inpatient wards. Exceptions are for a minor, woman in labor, and other special circumstances. In accordance with state enhanced surveillance advisory related to COVID-19, daily information is reported to Arizona State using EMResource.

5 patients were admitted to Sells Hospital who tested positive for COVID-19. Inpatient, in-hospital transportation, and postmortem protocols have been developed. Every patient admitted to the inpatient unit of Sells hospital is tested for COVID-19.

Med/Surge Bed Availability – 13 (9/28/2021)

Med/Surge Bed Capacity – 14, with 5 additional beds available if needed for emergency situations

No intensive care unit services

Negative Pressure Rooms – 2 inpatient rooms, 1 in emergency department (inpatient rooms are used by emergency department or other clinics when indicated).

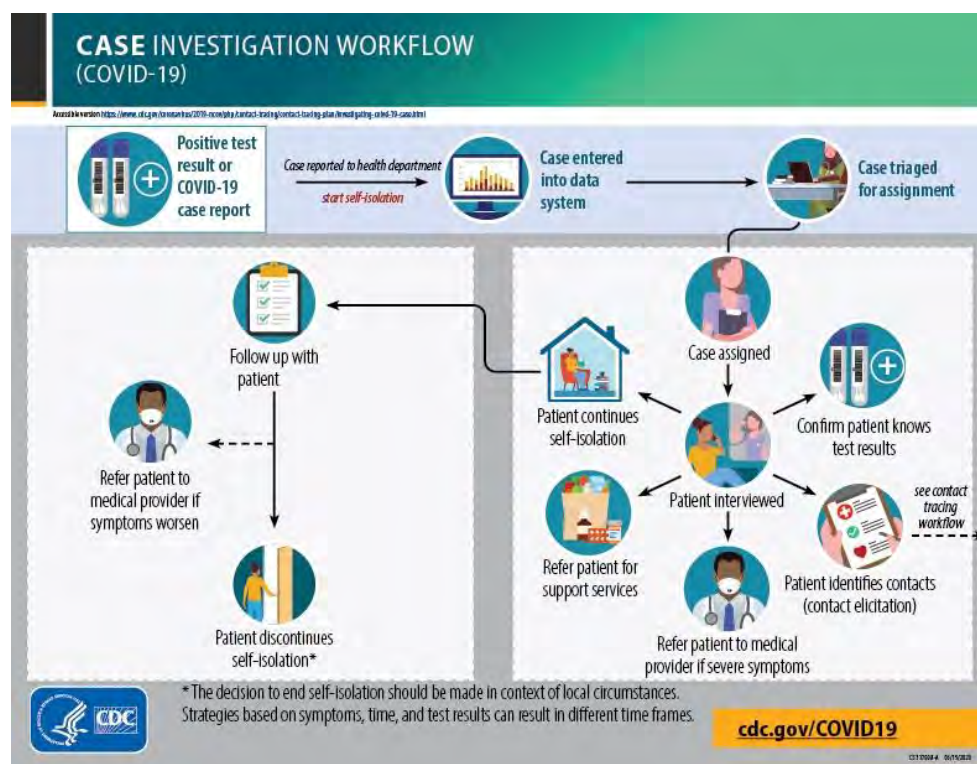
The Arizona Surge Line is used for all transfers outside of TONHC. The Arizona Surge Line is a 24/7 toll-free statewide system activated 4/22/20 to keep hospitals and regions of Arizona from being overwhelmed by facilitating COVID-19 patient admission, transfer, and discharge to appropriate levels of care.

Our outpatient clinic staff has been cross-trained in inpatient patient care. To date we have trained 16 members of the healthcare workforce to manage patients in the hospital setting. Cross training will allow us to increase the number of patients we can take care of on the inpatient unit. Please note that Sells hospital is not an intensive care unit, so we cannot take care of patients with COVID-19 requiring intensive respiratory treatment. These patients are transferred to intensive care units at other sites.

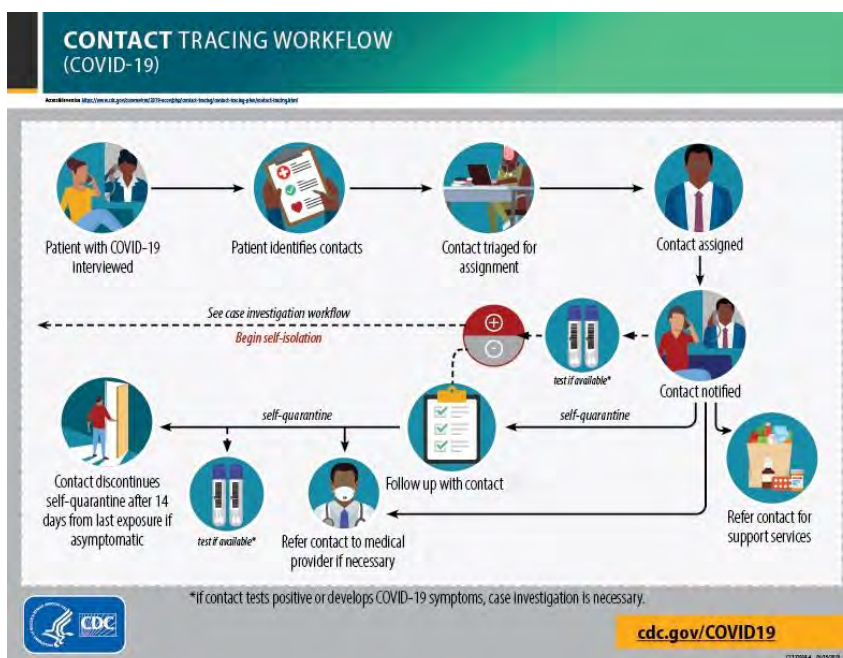
## PUBLIC HEALTH NURSING – CONTACT TRACING

**As of 9/29/21 at 7:00, 4,388 individual contact tracings have occurred in the Tohono O'odham Nation.**

TONHC public health nursing conducts case investigation and contact tracing (involves interviewing). Case investigations are initiated on everyone who tests positive for COVID-19.



Contact tracing, a core disease control measure, is a key strategy for preventing further spread of COVID-19. Contact tracing is part of the process of supporting patients with suspected or confirmed infection. In contact tracing, public health nursing works with patients to help them recall everyone with whom they have had close contact during the timeframe in which they may have been infectious. To protect patient privacy, contacts are only informed that they may have been exposed to a patient with the infection. They are not told the identity of the patient who may have exposed them. Contacts are provided with education, information, and support to understand their risk, what they should do to separate themselves from others who are not exposed, how to monitor themselves for illness, and the possibility that they could spread the infection to others even if they themselves do not feel ill.



## APPENDIX

### Confirmed COVID-19 Cases and Absolute Change among Enrolled Tohono O'odham Nation Members by Week, 2020-2021\*

Week (2020)	Cumulative COVID-19 Cases Among Enrolled Tohono O'odham Tribal Members	Absolute Change <sup>§</sup> in Cumulative Case Counts from Previous Week
June 24 <sup>th</sup> – June 30 <sup>th</sup>	208	
July 1 <sup>st</sup> – July 7 <sup>th</sup>	265	57
July 8 <sup>th</sup> – July 14 <sup>th</sup>	324	59
July 15 <sup>th</sup> – July 21 <sup>st</sup>	349	25
July 22 <sup>nd</sup> – July 28 <sup>th</sup>	382	33
July 29 <sup>th</sup> – August 4 <sup>th</sup>	421	39
August 5 <sup>th</sup> – August 11 <sup>th</sup>	468	47
August 12 <sup>th</sup> – August 18 <sup>th</sup>	501	33
August 19 <sup>th</sup> – August 25 <sup>th</sup>	513	12
August 26 <sup>th</sup> – September 1 <sup>st</sup>	523	10
September 2 <sup>nd</sup> – September 8 <sup>th</sup>	532	9
September 9 <sup>th</sup> – September 15 <sup>th</sup>	546	14
September 16 <sup>th</sup> – September 22 <sup>nd</sup>	546	0
September 23 <sup>rd</sup> – September 29 <sup>th</sup>	547	1
September 30 <sup>th</sup> – October 6 <sup>th</sup>	549	2
October 7 <sup>th</sup> – October 13 <sup>th</sup>	560	11
October 14 <sup>th</sup> – October 20 <sup>th</sup>	566	6
October 21 <sup>st</sup> – October 27 <sup>th</sup>	584	18
October 28 <sup>th</sup> – November 3 <sup>rd</sup>	597	13
November 4 <sup>th</sup> – November 10 <sup>th</sup>	637	40
November 11 <sup>th</sup> – November 17 <sup>th</sup>	687	50
November 18 <sup>th</sup> – November 24 <sup>th</sup>	744	57
November 25 <sup>th</sup> – December 1 <sup>st</sup>	805	61
December 2 <sup>nd</sup> – December 8 <sup>th</sup>	890	85
December 9 <sup>th</sup> – December 15 <sup>th</sup>	1017	127
December 16 <sup>th</sup> – December 22 <sup>nd</sup>	1109	92
December 23 <sup>rd</sup> – December 29 <sup>th</sup>	1191	82
December 30 <sup>th</sup> – January 5 <sup>th</sup>	1322	131
January 6 <sup>th</sup> – January 12 <sup>th</sup>	1444	122
January 13 <sup>th</sup> – January 19 <sup>th</sup>	1530	86
January 20 <sup>th</sup> – January 26 <sup>th</sup>	1624	94
January 27 <sup>th</sup> – February 2 <sup>nd</sup>	1671	47
February 3 <sup>rd</sup> – February 9 <sup>th</sup>	1705	34
February 10 <sup>th</sup> – February 16 <sup>th</sup>	1728	23
February 17 <sup>th</sup> – February 23 <sup>rd</sup>	1746	18
February 24 <sup>th</sup> – March 2 <sup>nd</sup>	1752	6
March 3 <sup>rd</sup> – March 9 <sup>th</sup>	1758	6
March 10 <sup>th</sup> – March 16 <sup>th</sup>	1759	1
March 17 <sup>th</sup> – March 23 <sup>rd</sup>	1761	2
March 24 <sup>th</sup> – March 30 <sup>th</sup>	1763	2
March 31 <sup>st</sup> – April 6 <sup>th</sup>	1764	1

April 7 <sup>th</sup> – April 13 <sup>th</sup>	1766	2
April 14 <sup>th</sup> – April 20 <sup>th</sup>	1770	4
April 21 <sup>st</sup> – April 27 <sup>th</sup>	1772	2
April 28 <sup>th</sup> – May 4 <sup>th</sup>	1780	8
May 5 <sup>th</sup> – May 11 <sup>th</sup>	1789	9
May 12 <sup>th</sup> – May 18 <sup>th</sup>	1790	1
May 19 <sup>th</sup> – May 25 <sup>th</sup>	1793	3
May 26 <sup>th</sup> – June 1 <sup>st</sup>	1794	1
June 2 <sup>nd</sup> – June 8 <sup>th</sup>	1800	6
June 9 <sup>th</sup> – June 15 <sup>th</sup>	1818	18
June 16 <sup>th</sup> – June 22 <sup>nd</sup>	1820	2
June 23 <sup>rd</sup> – June 29 <sup>th</sup>	1823	3
June 30 – July 6 <sup>th</sup>	1825	2
July 7 <sup>th</sup> – July 13 <sup>th</sup>	1832	7
July 14 <sup>th</sup> –July 20 <sup>th</sup>	1839	7
July 21 <sup>st</sup> – July 27 <sup>th</sup>	1850	11
July 28 <sup>th</sup> – August 3 <sup>rd</sup>	1876	26
August 4 <sup>th</sup> – August 10 <sup>th</sup>	1897	21
August 11 <sup>th</sup> – August 17 <sup>th</sup>	1925	28
August 18 <sup>th</sup> – August 24 <sup>th</sup>	1950	25
August 25 <sup>th</sup> – August 31 <sup>st</sup>	1976	26
September 1 <sup>st</sup> – September 7 <sup>th</sup>	1991	15
September 8 <sup>th</sup> – September 14 <sup>th</sup>	2010	19
September 15 <sup>th</sup> – September 21 <sup>st</sup>	2013	3
September 22 <sup>nd</sup> – September 28 <sup>th</sup>	2025	12
September 29 <sup>th</sup> – October 6 <sup>th</sup>	2037	12

\*changes due to added cases

**Confirmed COVID-19 Cases and Absolute Change among Enrolled Tohono O'odham Nation Members Residing within the Tohono O'odham Nation by Week, 2020-2021\***

<b>Week (2020)</b>	<b>Cumulative COVID-19 Cases Among Enrolled Tohono O'odham Tribal Members Residing within the Tohono O'odham Nation Boundary</b>	<b>Absolute Change<sup>s</sup> in Cumulative Case Counts from Previous Week</b>
June 24 <sup>th</sup> – June 30 <sup>th</sup>	87	
July 1 <sup>st</sup> – July 7 <sup>th</sup>	116	29
July 8 <sup>th</sup> – July 14 <sup>th</sup>	163	47
July 15 <sup>th</sup> – July 21 <sup>st</sup>	182	19
July 22 <sup>nd</sup> – July 28 <sup>th</sup>	204	22
July 29 <sup>th</sup> – August 4 <sup>th</sup>	234	30
August 5 <sup>th</sup> – August 11 <sup>th</sup>	272	38
August 12 <sup>th</sup> – August 18 <sup>th</sup>	299	27
August 19 <sup>th</sup> – August 25 <sup>th</sup>	309	10
August 26 <sup>th</sup> – September 1 <sup>st</sup>	319	10
September 2 <sup>nd</sup> – September 8 <sup>th</sup>	326	7
September 9 <sup>th</sup> – September 15 <sup>th</sup>	340	14
September 16 <sup>th</sup> – September 22 <sup>nd</sup>	340	0
September 23 <sup>rd</sup> – September 29 <sup>th</sup>	340	0

September 30 <sup>th</sup> – October 6 <sup>th</sup>	341	1
October 7 <sup>th</sup> – October 13 <sup>th</sup>	349	8
October 14 <sup>th</sup> – October 20 <sup>th</sup>	352	3
October 21 <sup>st</sup> – October 27 <sup>th</sup>	358	6
October 28 <sup>th</sup> – November 3 <sup>rd</sup>	369	11
November 4 <sup>th</sup> – November 10 <sup>th</sup>	402	32
November 11 <sup>th</sup> – November 17 <sup>th</sup>	437	35
November 18 <sup>th</sup> – November 24 <sup>th</sup>	485	48
November 25 <sup>th</sup> – December 1 <sup>st</sup>	528	43
December 2 <sup>nd</sup> – December 8 <sup>th</sup>	589	61
December 9 <sup>th</sup> – December 15 <sup>th</sup>	685	96
December 16 <sup>th</sup> – December 22 <sup>nd</sup>	747	62
December 23 <sup>rd</sup> – December 29 <sup>th</sup>	796	49
December 30 <sup>th</sup> – January 5 <sup>th</sup>	884	88
January 6 <sup>th</sup> – January 12 <sup>th</sup>	969	85
January 13 <sup>th</sup> – January 19 <sup>th</sup>	1031	62
January 20 <sup>th</sup> – January 26 <sup>th</sup>	1106	75
January 27 <sup>th</sup> – February 2 <sup>nd</sup>	1137	31
February 3 <sup>rd</sup> – February 9 <sup>th</sup>	1166	29
February 10 <sup>th</sup> – February 16 <sup>th</sup>	1179	13
February 17 <sup>th</sup> – February 23 <sup>rd</sup>	1191	12
February 24 <sup>th</sup> – March 2 <sup>nd</sup>	1195	4
March 3 <sup>rd</sup> – March 9 <sup>th</sup>	1199	4
March 10 <sup>th</sup> – March 16 <sup>th</sup>	1200	1
March 17 <sup>th</sup> – March 23 <sup>rd</sup>	1202	2
March 24 <sup>th</sup> – March 30 <sup>th</sup>	1204	2
March 31 <sup>st</sup> – April 6 <sup>th</sup>	1204	0
April 7 <sup>th</sup> – April 13 <sup>th</sup>	1204	0
April 13 <sup>th</sup> – April 20 <sup>th</sup>	1207	3
April 21 <sup>st</sup> – April 27 <sup>th</sup>	1207	0
April 28 <sup>th</sup> – May 4 <sup>th</sup>	1211	4
May 5 <sup>th</sup> – May 11 <sup>th</sup>	1220	9
May 12 <sup>th</sup> – May 18 <sup>th</sup>	1221	1
May 19 <sup>th</sup> – May 25 <sup>th</sup>	1223	2
May 26 <sup>th</sup> – June 1 <sup>st</sup>	1224	1
June 2 <sup>nd</sup> – June 8 <sup>th</sup>	1228	4
June 9 <sup>th</sup> – June 15 <sup>th</sup>	1244	16
June 16 <sup>th</sup> – June 22 <sup>nd</sup>	1245	1
June 23 <sup>rd</sup> – June 29 <sup>th</sup>	1246	1
June 30 – July 6 <sup>th</sup>	1247	1
July 7 <sup>th</sup> – July 13 <sup>th</sup>	1253	6
July 14 <sup>th</sup> – July 20 <sup>th</sup>	1258	5
July 21 <sup>st</sup> – July 27 <sup>th</sup>	1263	5
July 28 <sup>th</sup> – August 3 <sup>rd</sup>	1282	19
August 4 <sup>th</sup> – August 10 <sup>th</sup>	1294	12
August 11 <sup>th</sup> – August 17 <sup>th</sup>	1312	18

August 18 <sup>th</sup> – August 24 <sup>th</sup>	1324	12
August 25 <sup>th</sup> – August 31 <sup>st</sup>	1339	15
September 1 <sup>st</sup> – September 7 <sup>th</sup>	1344	5
September 8 <sup>th</sup> – September 14 <sup>th</sup>	1353	9
September 15 <sup>th</sup> – September 21 <sup>st</sup>	1355	2
September 22 <sup>nd</sup> – September 28 <sup>th</sup>	1363	8
September 29 <sup>th</sup> – October 6 <sup>th</sup>	1370	7

\*Changes due to added cases and reclassification of residence

### TONHC COVID-19 Positive Test Results and Absolute Change by Week, 2020-2021

Week (2020)	TONHC Cumulative Positive COVID-19 Test Results	Absolute Change <sup>†</sup> in Positive Test Results from Previous Week
June 24 <sup>th</sup> – June 30 <sup>th</sup>	153	
July 1 <sup>st</sup> – July 7 <sup>th</sup>	202	49
July 8 <sup>th</sup> – July 14 <sup>th</sup>	251	49
July 15 <sup>th</sup> – July 21 <sup>st</sup>	278	27
July 22 <sup>nd</sup> – July 28 <sup>th</sup>	302	24
July 29 <sup>th</sup> – August 4 <sup>th</sup>	342	40
August 5 <sup>th</sup> – August 11 <sup>th</sup>	382	40
August 12 <sup>th</sup> – August 18 <sup>th</sup>	403	21
August 19 <sup>th</sup> – August 25 <sup>th</sup>	416	13
August 26 <sup>th</sup> – September 1 <sup>st</sup>	426	10
September 2 <sup>nd</sup> – September 8 <sup>th</sup>	431	5
September 9 <sup>th</sup> – September 15 <sup>th</sup>	444	13
September 16 <sup>th</sup> – September 22 <sup>nd</sup>	445	1
September 23 <sup>rd</sup> – September 29 <sup>th</sup>	447	2
September 30 <sup>th</sup> – October 6 <sup>th</sup>	449	2
October 7 <sup>th</sup> – October 13 <sup>th</sup>	457	8
October 14 <sup>th</sup> – October 20 <sup>th</sup>	464	7
October 21 <sup>st</sup> – October 27 <sup>th</sup>	487	23
October 28 <sup>th</sup> – November 3 <sup>rd</sup>	505	18
November 4 <sup>th</sup> – November 10 <sup>th</sup>	549	44
November 11 <sup>th</sup> – November 17 <sup>th</sup>	604	55
November 18 <sup>th</sup> – November 24 <sup>th</sup>	667	63
November 25 <sup>th</sup> – December 1 <sup>st</sup>	725	58
December 2 <sup>nd</sup> – December 8 <sup>th</sup>	824	99
December 9 <sup>th</sup> – December 15 <sup>th</sup>	962	138
December 16 <sup>th</sup> – December 22 <sup>nd</sup>	1066	104
December 23 <sup>rd</sup> – December 29 <sup>th</sup>	1148	82
December 30 <sup>th</sup> – January 5 <sup>th</sup>	1276	128
January 6 <sup>th</sup> – January 12 <sup>th</sup>	1409	133
January 13 <sup>th</sup> – January 19 <sup>th</sup>	1497	88
January 20 <sup>th</sup> – January 26 <sup>th</sup>	1584	87
January 27 <sup>th</sup> – February 2 <sup>nd</sup>	1630	46

TONHC Situation Update 10/06/2021 7:00

**Wear a mask, physically distance, and wash your hands to protect Tohono O'odham Nation**



February 3 <sup>rd</sup> – February 9 <sup>th</sup>	1664	34
February 10 <sup>th</sup> - February 16 <sup>th</sup>	1689	25
February 17 <sup>th</sup> – February 23 <sup>rd</sup>	1706	17
February 24 <sup>th</sup> – March 2 <sup>nd</sup>	1711	5
March 3 <sup>rd</sup> – March 9 <sup>th</sup>	1723	12
March 10 <sup>th</sup> – March 16 <sup>th</sup>	1729	6
March 17 <sup>th</sup> – March 23 <sup>rd</sup>	1731	2
March 24 <sup>th</sup> – March 30 <sup>th</sup>	1736	5
March 31 <sup>st</sup> – April 6 <sup>th</sup>	1739	3
April 7 <sup>th</sup> – April 13 <sup>th</sup>	1743	4
April 13 <sup>th</sup> – April 20 <sup>th</sup>	1747	4
April 21 <sup>st</sup> – April 27 <sup>th</sup>	1748	1
April 28 <sup>th</sup> – May 4 <sup>th</sup>	1755	7
May 5 <sup>th</sup> – May 11 <sup>th</sup>	1764	9
May 12 <sup>th</sup> – May 18 <sup>th</sup>	1765	1
May 19 <sup>th</sup> – May 25 <sup>th</sup>	1768	3
May 26 <sup>th</sup> – June 1 <sup>st</sup>	1768	0
June 2 <sup>nd</sup> – June 8 <sup>th</sup>	1774	6
June 9 <sup>th</sup> – June 15 <sup>th</sup>	1792	18
June 16 <sup>th</sup> – June 22 <sup>nd</sup>	1794	2
June 23 <sup>rd</sup> – June 29 <sup>th</sup>	1798	4
June 30 – July 6 <sup>th</sup>	1800	2
July 7 <sup>th</sup> – July 13 <sup>th</sup>	1803	3
July 14 <sup>th</sup> – July 20 <sup>th</sup>	1810	7
July 21 <sup>st</sup> – July 27 <sup>th</sup>	1823	13
July 28 <sup>th</sup> – August 3 <sup>rd</sup>	1853	30
August 4 <sup>th</sup> – August 10 <sup>th</sup>	1878	25
August 11 <sup>th</sup> – August 17 <sup>th</sup>	1906	28
August 18 <sup>th</sup> – August 24 <sup>th</sup>	1932	26
August 25 <sup>th</sup> August 31 <sup>st</sup>	1965	33
September 1 <sup>st</sup> – September 7 <sup>th</sup>	1978	13
September 8 <sup>th</sup> – September 14 <sup>th</sup>	1996	18
September 15 <sup>th</sup> – September 21 <sup>st</sup>	2005	9
September 22 <sup>nd</sup> – September 28 <sup>th</sup>	2019	14
September 29 <sup>th</sup> – October 6 <sup>th</sup>	2035	16