



Tohono O'odham Nation Health Care (TONHC)

COVID-19 Situation Update: October 13, 2021

T-Ñukuda Ha'icu Cihañig

This is a rapidly evolving situation. Information is recent as of October 13 at 7:00 and may change as more data becomes available.

COVID-19 Data among Members of Tohono O'odham Nation (TON)

| Total Pandemic Cases | New Cases This Week | TONHC Percent Positive Tests This Week* | Total Pandemic Deaths ** |
|----------------------|---------------------|---|--------------------------|
| 2,075 | 35 | 16.1% | 83 |

TONHC COVID-19 Vaccination Program

| Number of people fully vaccinated | Total Doses Given to date | Points of Distribution (PODs) Completed | PODs Open This Week |
|-----------------------------------|---------------------------|---|---------------------|
| 10,201 | 19,621 | 327 | 9 |

What's New?

TOHONO O'ODHAM NATION CURRENT RISK LEVEL: HIGH

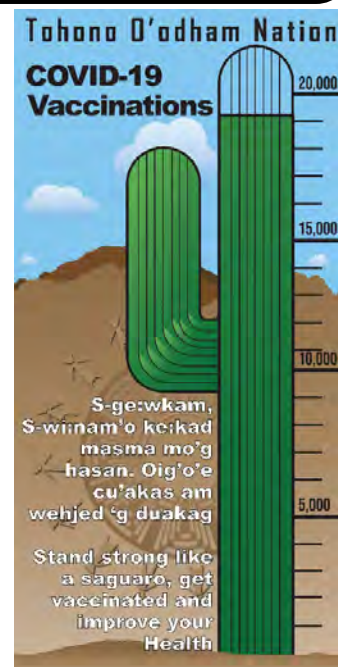
| | | | |
|------------------|-----------------------|--------------------------|-------------------|
| Low Transmission | Moderate Transmission | Substantial Transmission | High Transmission |
|------------------|-----------------------|--------------------------|-------------------|

The Tohono O'odham Nation is currently experiencing a significant increase in new COVID-19 cases. We strongly urge you to continue physical distancing, masking, and following guidelines set to help prevent the spread of COVID-19.

TON offers \$400 to all members who are fully vaccinated by November 19, 2021. Get information at: www.tonation-nsn.gov, (520) 383-8700 or tonenrollment@tonation-nsn.gov. It pays to get vaccinated!

The CDC currently recommends COVID-19 vaccination for people:

- Ages ≥12 years
- Who are pregnant, breastfeeding, trying to get pregnant now, or might become pregnant in the future
- Who have been infected with COVID-19 once they recover
- Who received monoclonal antibody treatments (mAB), 90 days after treatment.



Positive COVID-19 Cases

| | Enrolled Member of Tohono O'odham Nation | Enrolled Member of Another Tribe or Other | Total |
|------------------------------------|--|---|-------|
| Residing within Boundaries of TON | 1393 | 52 | 1445 |
| Residing outside Boundaries of TON | 682 | 318 | 1000 |
| Total | 2075 | 370 | 2445 |

*Includes non-TON members tested at TONHC

**Total Pandemic Cases & Deaths include non-tribal community members

| COVID-19 Vaccinations | Completed COVID-19 Vaccine Series | | At Least 1 COVID-19 Vaccine Administered | | Population |
|---------------------------------|-----------------------------------|-------|--|-------|------------|
| | Percent (%) | (n) | Percent (%) | (n) | (n) |
| US Population 12 years & over** | 66% | | 77% | | |
| American Indian/Alaska Native | 47% | 8,897 | 53% | 9,980 | 18,947* |
| Tohono O'odham Nation Member | 52% | 7,663 | 59% | 8,595 | 14,625† |
| Residing on TON | 59% | 5,014 | 63% | 5,595 | 8,562# |

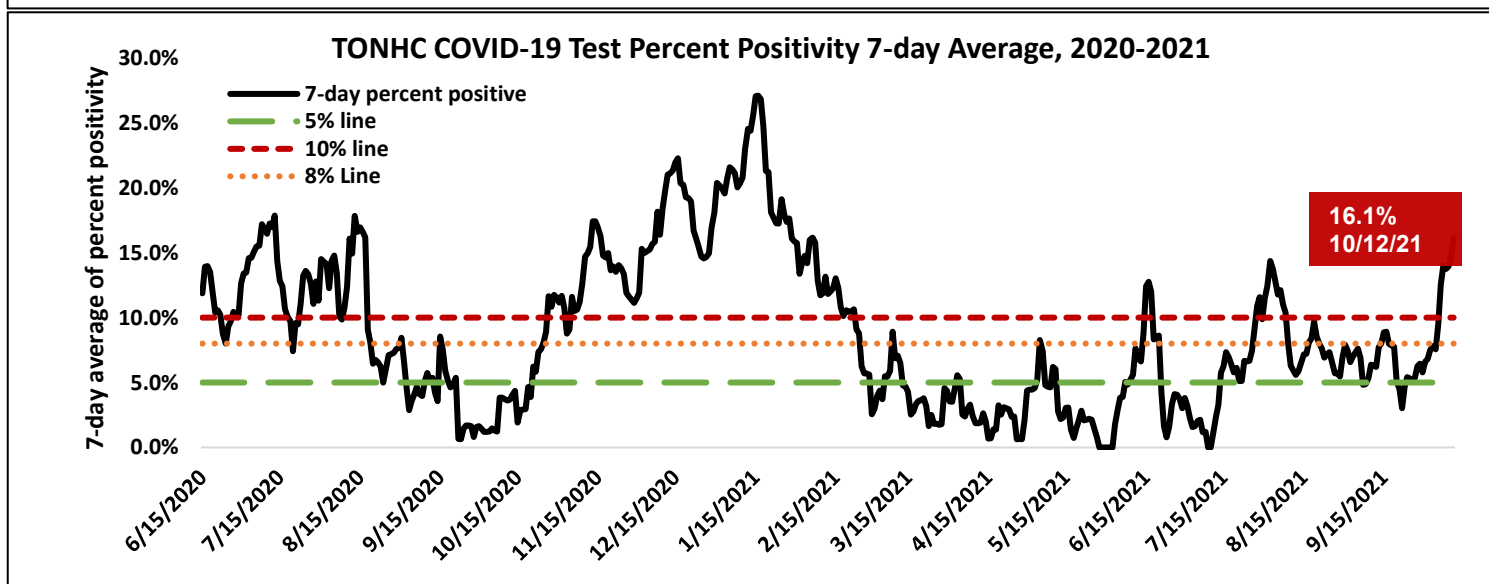
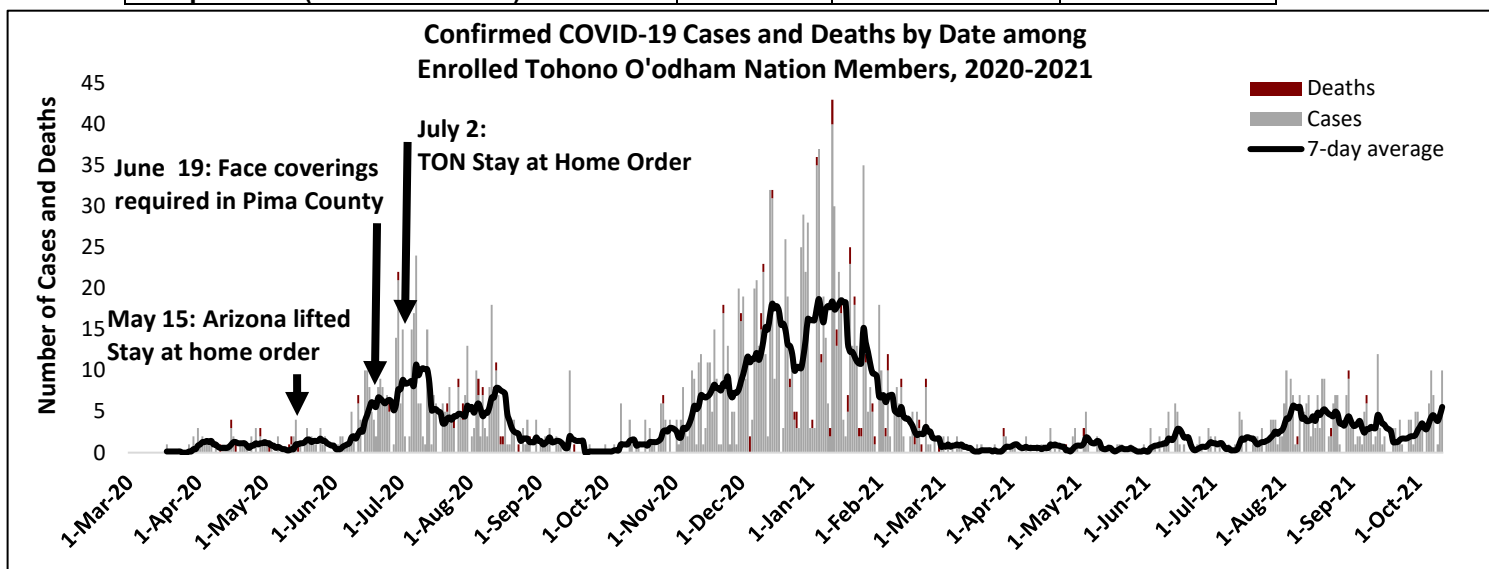
*American Indian/Alaska Native, vaccine eligible ages 12 years and older, at least 1 visit at TONHC in last 3 years, and TON members receiving vaccine through PIMC

†Enrolled TON member, vaccine eligible ages 12 years and older, at least one visit at TONHC in last 3 years, and TON members receiving vaccine through PIMC

Enrolled TON members and non-members, vaccine eligible ages 12 years and older, at least one visit at TONHC in last 3 years, residing on TON, including TON members receiving vaccine through PIMC

**CDC | Data as of: October 12, 2021 6:00am ET. Posted: Tuesday, October 12, 2021 2:51 PM ET

| COVID-19 Case data | TON | Pima County | AZ |
|--|---------|-------------|-------------|
| Total Cases | 2075 | 138,833 | 1,124,709 |
| Number of cases in last 7 days | 35 | 1,675 | 13,350 |
| Incidence Rate last 7 days (per 100,000) | 176 | 174 | 212 |
| Percent Positivity last 7 days | 16.1% | 8.2% | 10.4% |
| Cumulative Incidence Rate (per 100,000) | 10,670 | 13,290 | 15,645 |
| Number Deaths (% of total cases) | 83 (4%) | 2,664 (2%) | 20,447 (2%) |
| Number Hospitalized | 264 | 8,463 | 78,390 |
| Hospitalized (% of total cases) | 13% | 6% | 7% |



COVID-19 Vaccination Points of Dispensing (PODs) in TON

Vaccination of all community members is necessary to block COVID-19 transmission, protect personal and public health, and preserve healthcare. COVID-19 vaccines are safe and recommended for everyone aged 12 years and older, including people who have had a prior COVID-19 infection.

COVID-19 Vaccine is currently available through TONHC to eligible members:

- TON members or other tribal members (photo ID needed, tribal ID preferred)
- Non-Native persons who work on the TON (bring employee ID or letter from supervisor stating your name, employer, and occupation)
- Non-Native persons who reside in a household with a tribal member (bring proof of residence)

Vaccine PODs

TONHC continues to vaccinate through scheduled PODs. Vaccines are also available at TONHC clinics. Safety is a priority. We have medical providers and infection control monitors onsite at all times. Moderna vaccine requires an injection into the upper arm, with a booster shot four weeks later. Pfizer vaccine requires an injection into the upper arm, with a booster shot three weeks later. Janssen vaccine requires one injection into the upper arm, with no booster needed.

Upcoming POD events:

Wednesday, October 6, 2021 – COVID-19 and Flu Vaccination Event at Basha's Plaza from 4 p.m. to 7 p.m.

Wednesday, October 13, 2021 - Santa Rosa Health Center Vaccine Clinic from 1 p.m. to 4 p.m.

COVID-19 Vaccine Guidelines

The CDC currently recommends COVID-19 vaccination for people:

- Ages ≥12 years
- Who are pregnant, breastfeeding, trying to get pregnant now, or might become pregnant in the future
- Who have been infected with COVID-19 once they recover
- Who received monoclonal antibody treatments (mAB), 90 days after treatment.

CDC recommends boosters for the following groups:

- Persons with moderately to severely weakened immune systems receive a 3rd dose of Moderna or Pfizer 28 days or longer after the 2nd dose.
- Persons in certain groups who received 2 doses of Pfizer (guidance is only for Pfizer):
 - All individuals 65 years and older, and residents in long-term care settings. Pfizer Booster should be given ≥ 6 months after the second dose.
- Adults 18-64 years with underlying medical conditions or in high-risk work and institutional settings (includes health care workers who fully vaccinated with Pfizer)

Booster doses are not currently recommended for the general public. The FDA is reviewing data on COVID-19 vaccines for younger children. Persons may receive COVID-19 and other vaccines on the same day.

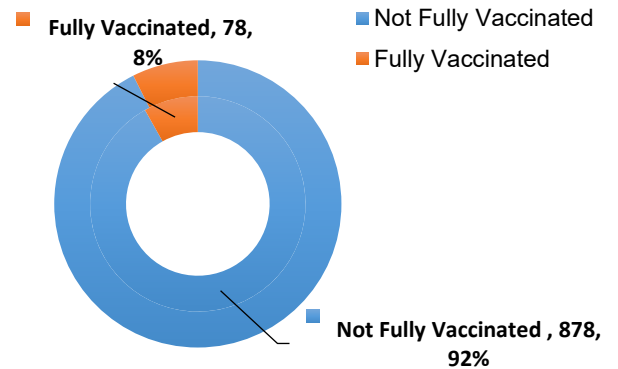
| Vaccine | Type | Primary Doses | Authorized for Ages | 3 rd dose for immunocompromised | Booster |
|-------------------|------------------------------|--------------------------|---------------------|--|-----------|
| Pfizer * | mRNA | 2 doses 3 weeks apart | 12+ | 28 days after completing first 2 doses | 6 months* |
| Moderna | mRNA | 2 doses 4 weeks apart | 18+ | 28 days after completing first 2 doses | Not yet |
| Johnson & Johnson | Viral Vector | 1 dose | 18+ | No recommendation at this time | Not yet |

COVID-19 Brief

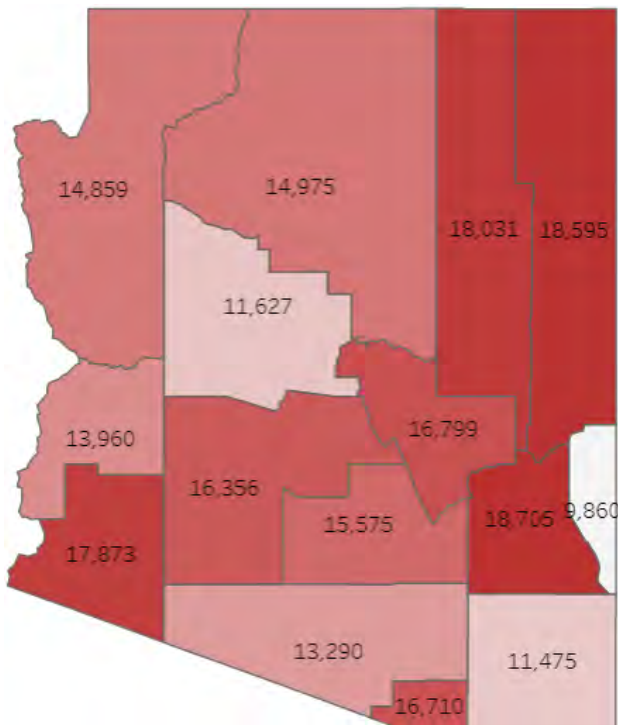
| | Enrolled Member of Tohono O'odham Nation | Enrolled Member of Another Tribe or Other | Total |
|---|---|--|-------|
| Residing within Boundaries of Tohono O'odham Nation | 1393 | 52 | 1445 |
| Residing outside Boundaries of Tohono O'odham Nation | 682 | 318 | 1000 |
| Total | 2075 | 370 | 2445 |

| COVID-19 Case data | TON | Pima County | AZ |
|---|------------|----------------|----------------|
| Total Cases | 2075 | 138,833 | 1,124,709 |
| Number of cases in last 7 days | 35 | 1,675 | 13,350 |
| Incidence Rate last 7 days (per 100,000) | 176 | 174 | 212 |
| Percent Positivity last 7 days | 16.1% | 8.2% | 10.4% |
| Cumulative Incidence Rate (per 100,000) | 10,670 | 13,290 | 15,645 |
| Number Deaths (% of total cases) | 83 (4%) | 2,664 (2%) | 20,447 (2%) |
| Number Hospitalized | 264 | 8,463 | 78,390 |
| Hospitalized (% of total cases) | 13% | 6% | 7% |

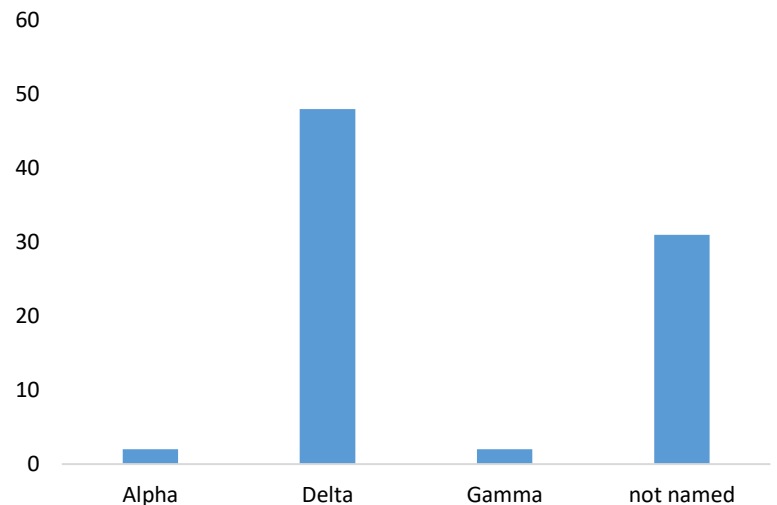
COVID-19 Cases among TON Members by
Vaccination Status, 2021



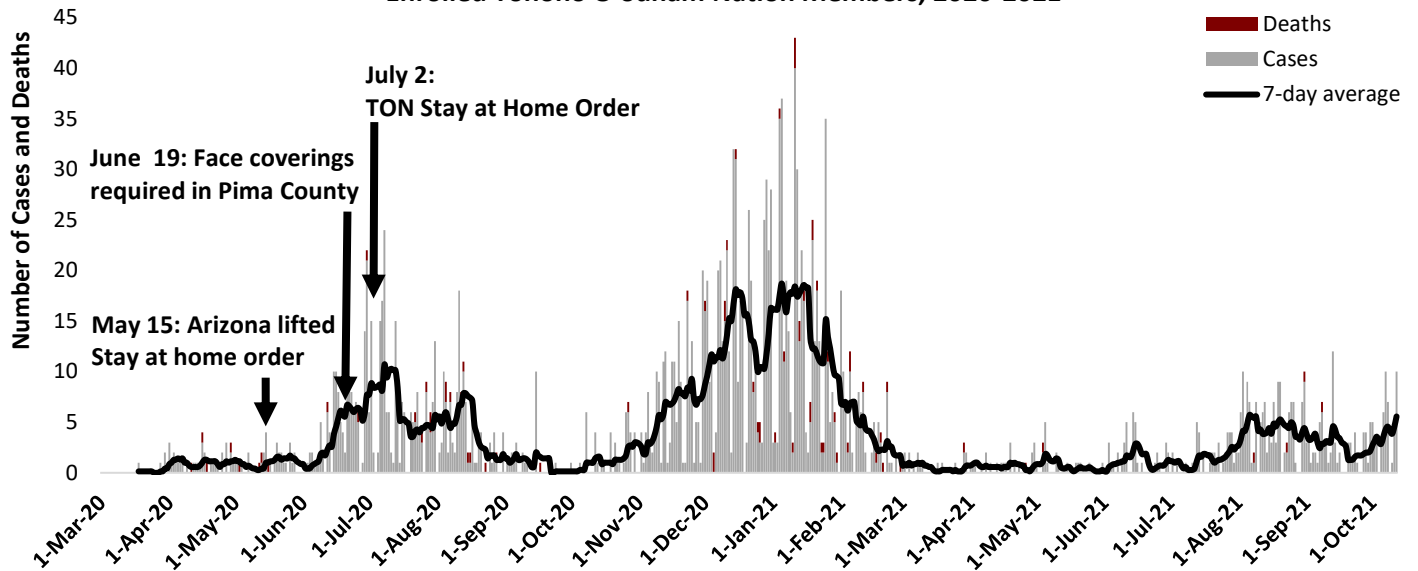
Cumulative Incidence
Rate per 100K by County



COVID-19 Variants reported from TONHC cases,
Arizona Department of Health Services 2021

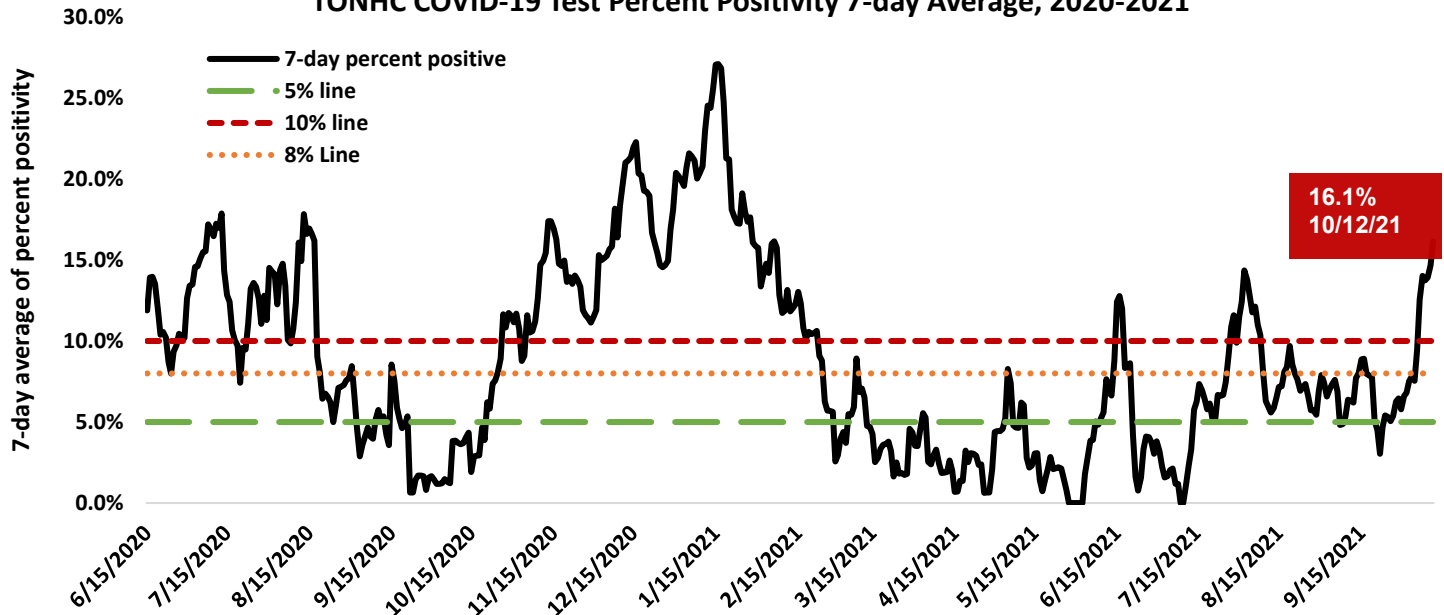


Confirmed COVID-19 Cases and Deaths by Date among Enrolled Tohono O'odham Nation Members, 2020-2021



Weekly test percent positivity is calculated using the day tests were performed and 6-days prior (7-day detected "positive" results)/(7-day total tests performed) x 10

TONHC COVID-19 Test Percent Positivity 7-day Average, 2020-2021



18,625 COVID-19 Tests Performed at TONHC
249 Tests Performed in the Past 7 Days

Tohono O'odham Nation COVID-19 Positive Case Information

| | Enrolled Member of Tohono O'odham Nation | Enrolled Member of Another Tribe or Other | Total |
|---|--|---|-------------|
| Residing within Boundaries of Tohono O'odham Nation | 1393 | 52 | 1445 |
| Residing outside Boundaries of Tohono O'odham Nation | 682 | 318 | 1000 |
| Total | 2075 | 370 | 2445 |

2,075 members of the Tohono O'odham Nation have tested positive* for COVID-19 (as of 10/13/2021 at 7:00). On 10/6/2021, there were 2,040. This represents a **2%** increase over the last week. † The number of positive cases is **29x** the number 70 weeks ago (72 on 6/9/2020).

1,393 members of the Tohono O'odham Nation who tested positive reside in the Tohono O'odham Nation. On 10/6/2021, there were 1,370. This represents a **2%** increase† over the last week. The number of persons who reside in the Tohono O'odham Nation and tested positive for COVID-19 is **58x** the number 70 weeks ago (24 cases on 6/9/2020).

- **1,349** members (65%) are recovering (among members of the Tohono O'odham Nation) ‡
- **76** deaths among members of the Tohono O'odham Nation and **7** members of another tribe.
- **3** deaths in hospital in Tohono O'odham Nation, **80** in hospitals outside the Tohono O'odham Nation.

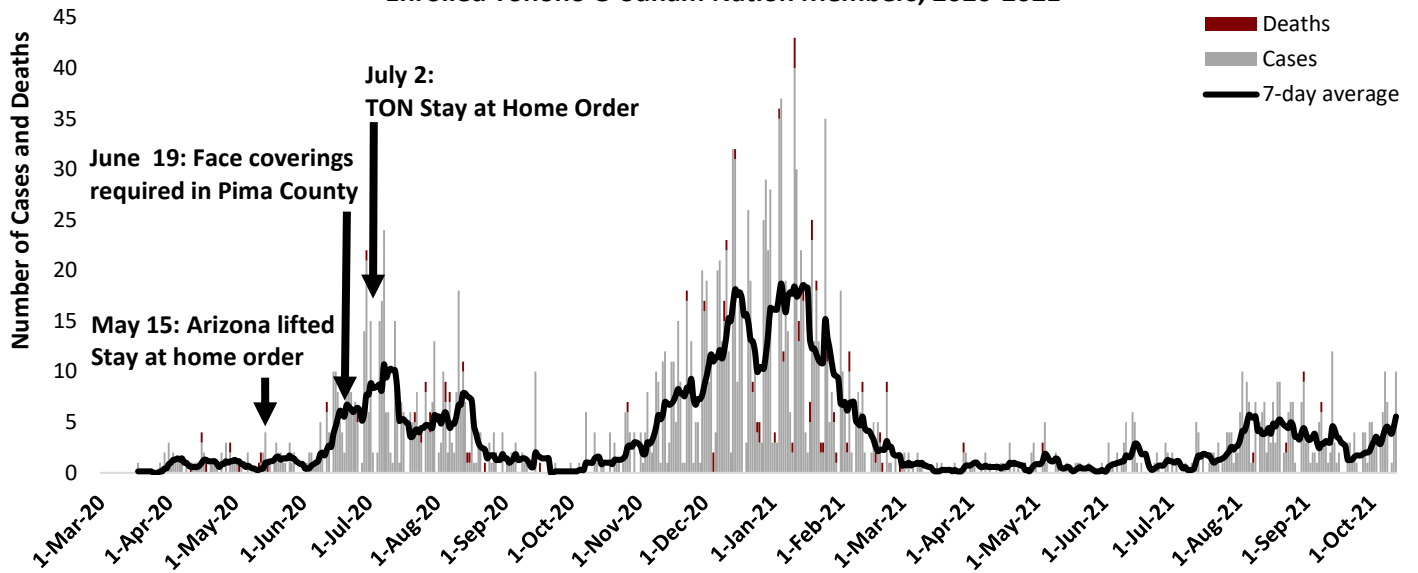
*COVID-19 positive result means COVID-19 test result of "detected"

†Defined as percentage change (most recent number – previous number)/previous number * 100

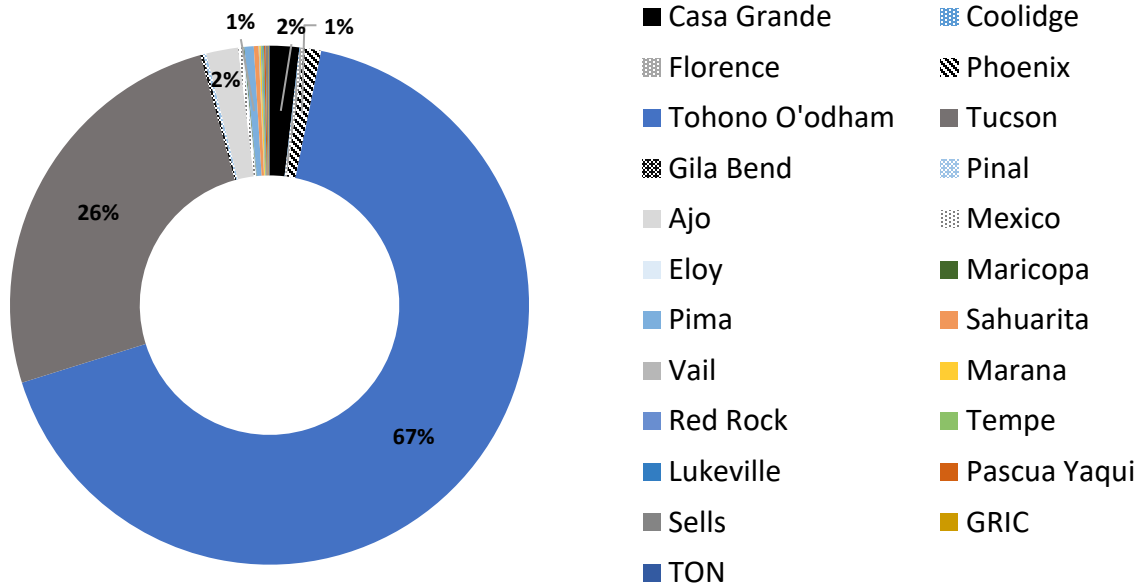
‡Absolute change in cumulative case count is the number of cumulative cases through week 2 subtracted from the number of cumulative cases through week 1, |week2 – week1|

¶Recovering is defined as having diagnosis/symptom onset 14-days ago, improving, and no longer hospitalized
7-day average is the average of cases for that day and the 6-days prior

Confirmed COVID-19 Cases and Deaths by Date among Enrolled Tohono O'odham Nation Members, 2020-2021



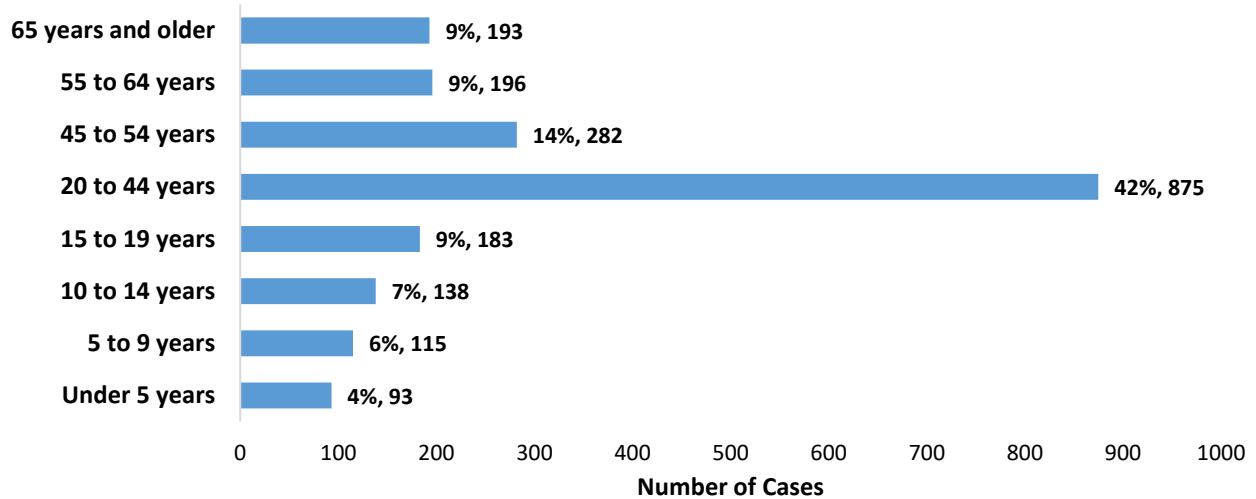
Region of Residence for COVID-19 Cases among Members of the Tohono O'odham Nation



Some areas are less than 1%

7/22/2020 was the first week that the percentage of persons residing in the Tohono O'odham Nation was over 50% of the cases.

Age Distribution of COVID-19 Cases among Tohono O'odham Members, 2020-2021



Laboratory-confirmed COVID-19 among Tohono O'odham Nation Enrolled Members

| | Count (n) | Percent (%) | State of Arizona Percent (%) |
|--|-----------|-------------|------------------------------|
| TON members tested positive for COVID-19 | 2075 | | 2075 |
| Asymptomatic/Pre-symptomatic | 395 | 19% | 395 |
| TON Reside in Reservation | 1393 | 67% | 1393 |
| Hospitalized | 264 | 13% | 264 |
| Recovering | 1349 | 65% | 1349 |
| Died | 76 | 4% | 76 |

| | Median (years) | Minimum (months) | Maximum (years) |
|-----|----------------|------------------|-----------------|
| Age | 33 | 0 | 102 |

| | Male | Percent (%) | Female | Percent |
|-----|------|-------------|--------|---------|
| Sex | 847 | 41% | 1228 | 59% |

The first presumptive positive test result at TONHC for COVID-19 was at San Xavier Health Center on 3/30/2020. Clinical staff, Employee Health, and Public Health Nursing continue to work together to discuss exposure risk, monitoring for symptoms, and provide guidance on isolation and quarantine with staff and community.

COVID-19 Laboratory Testing at TONHC

TONHC total number of COVID-19 testing (as of 10/13/2021 at 7:00): **18,625** tests performed:

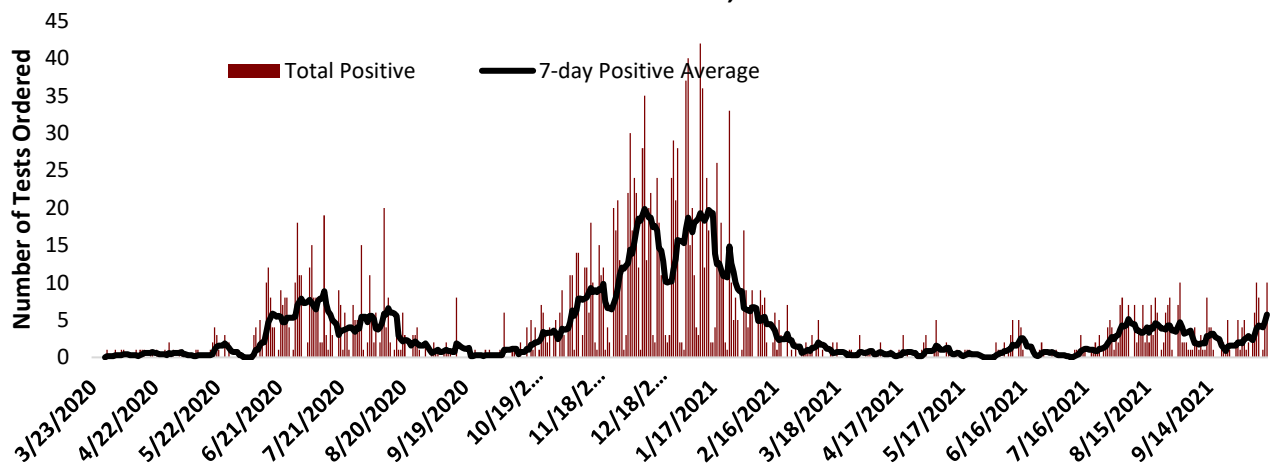
- 17,377 = patients (anyone who receives care at a TONHC facility)
- 1,148 = employees
- 100 = first responders

On 10/6/2021, 18,376 tests were completed. In the past seven days, TONHC performed 213 tests.

As of 10/13/2021, **2,075** tests results were positive* for COVID-19. On 10/6/2021, there were 2,035 positive tests. The number of positive test results are **55x** the amount compared to 70 weeks ago (since 6/9/2020). 38 total tests were positive on 6/9/2020. There have been **90** positive cases among TONHC employees.

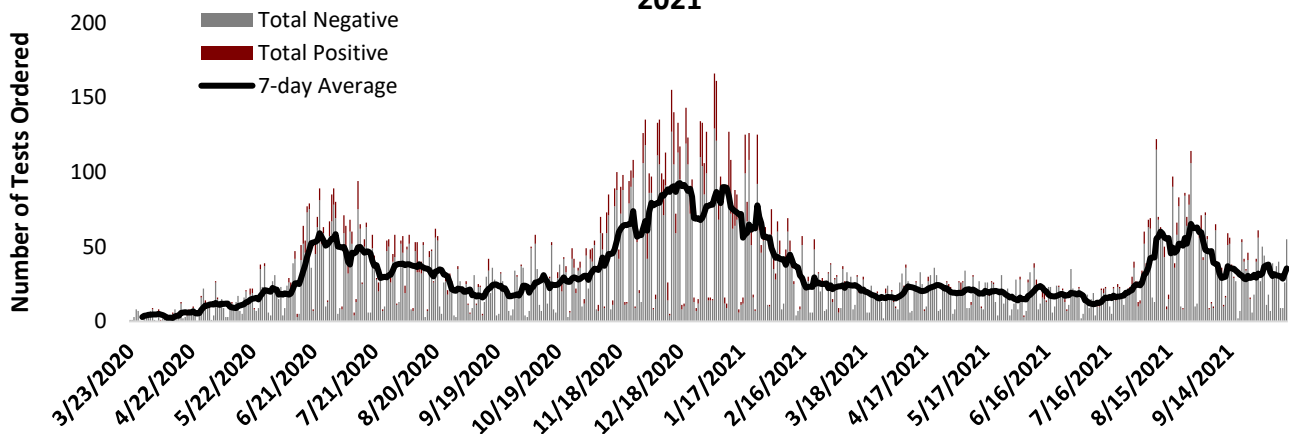
As of 10/13/2021 at 7:00, 10,315 individual TONHC patients have tested for COVID-19. This comprises **51%** of the TONHC User Population. User Population consists of patients who have received care at TONHC at least twice in the past three years.

**COVID-19 Positive Tests Performed at
Tohono O'odham Health Care, 2020-2021**

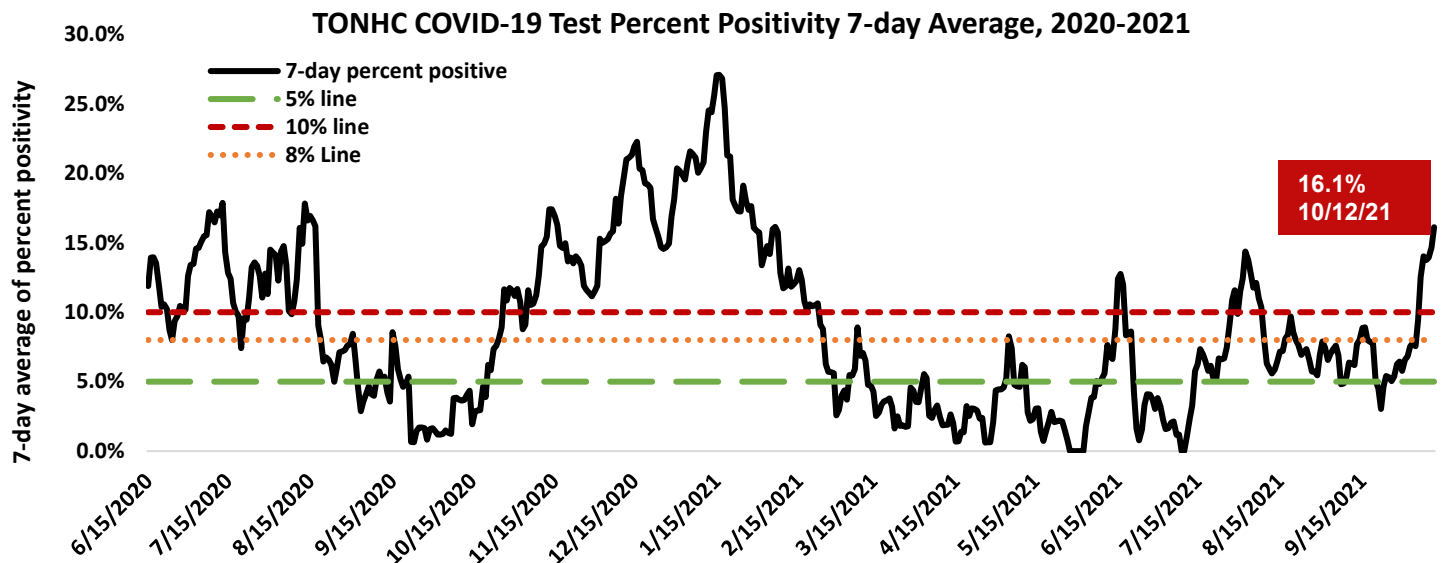


7-day average is the average of cases for that day and the 6-days prior

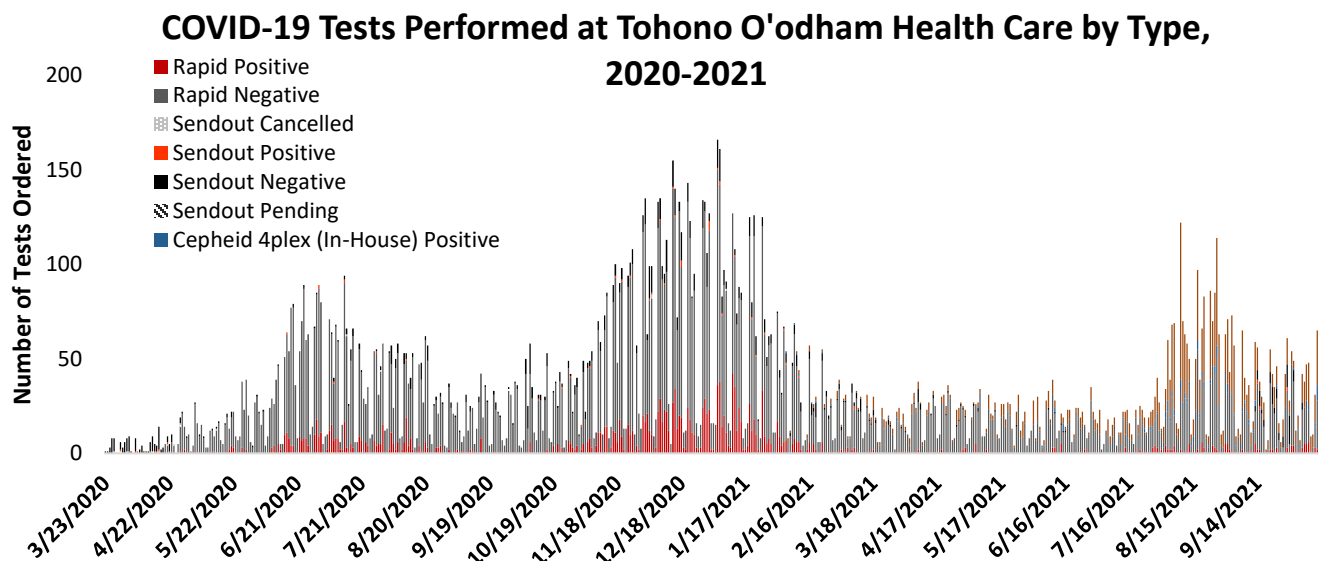
COVID-19 Tests Performed at Tohono O'odham Health Care by Result, 2020-2021



7-day average is the average of cases for that day and the 6-days prior



* Weekly test percent positivity is calculated using the day tests were performed and 6-days prior (7-day detected "positive" results)/(7-day total tests performed) x 100%



COVID-19 testing began at TONHC on March 23, 2020. Same-day testing is available at San Xavier, Sells, and San Simon Health Centers. On-site same-day testing began on April 20, 2020. There are two different in-house testing platforms currently; same-day/rapid test for symptomatic patients or same-day PCR testing (testing for SARS CoV-2, Flu A, Flu B, and RSV using one swab, starting February 1, 2021). Send-out testing is used for specific cases. Effective 8/1/21, in-house antibody testing was discontinued, however testing can still be ordered and sent to the reference laboratory.

We have eleven on-site Abbott ID NOW™ machines used for same-day symptomatic testing, and four Cepheid analyzers that can perform up to 52 PCR tests at one time for non-symptomatic patients. We continue to pursue additional avenues for more on-site PCR testing. In addition to expanding testing capabilities, medical assistants at TONHC completed competencies in performing COVID-19 nasal swab testing to assist with testing as needed.

*COVID-19 positive result means COVID-19 test result of "detected" for tests performed at TONHC (San Xavier, San Simon, Sells, and off-site).

†Absolute change in cumulative case count is the number of cumulative cases through week 2 subtracted from the number of cumulative cases through week 1, |week2 – week1|

TONHC Situation Update 10/13/2021 7:00

Wear a mask, physically distance, and wash your hands to protect Tohono O'odham Nation

Staying Safe at HOME

Our team strongly recommends to continue prevention measures including avoiding all unnecessary travel and gatherings. We also recommend the use of masks/cloth face coverings for all persons in public settings. Please continue to share the messaging of minimizing group contact, including neighbors and relatives not in one's own household.



Stay at home as much as possible



Practice physical distancing (remaining at least 6 feet away from others)



Clean your hands often

Our testing algorithms aim to identify symptomatic persons, asymptomatic persons with known potential COVID-19 exposures, and persons who will enter high-risk or congregate settings (surgery, detention, foster care, hospitalization, dorms, etc.).

We all need to do our part and to continue to practice physical distancing and frequent hand hygiene.

Please share with community members:

The best way to prevent illness is to avoid exposure to this virus. These simple actions will lessen your chances of catching COVID-19 and spreading it to others:



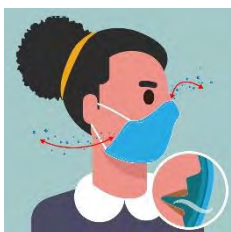
- Everyone should wear a mask/cloth face covering in public when physical distancing of 6 feet is not possible (except children ages less than 2 years and persons with a medical contraindication).
- Limit direct physical contact to only persons who live in the same household.
- Avoid all group activities/gatherings, even relatives if they do not live with you until further notice.
- Maintain “stay at home” behavior except for essential needs.
- Report illnesses and possible COVID-19 exposures immediately to your provider.
- Frequently wash hands with soap and water, and use alcohol-based hand sanitizer if unable to wash hands.

Symptoms to Monitor



COVID-19 symptoms to monitor for: fever, chills, cough, difficulty breathing (shortness of breath), runny/stuffy nose, sore throat, headaches, fatigue, abdominal pain, vomiting, diarrhea, new loss of taste or smell. If you have any of these symptoms, please stay home and do not go to work, school, or be in public areas.

Face Mask Guidance in the Community Setting



How to make sure your mask works the best it can

1. **Make sure your mask fits snugly against your face.** Gaps can let air with respiratory droplets leak in and out around the edges of the mask
2. **Pick a mask with layers to keep your respiratory droplets in and others' out.** A mask with layers will stop more respiratory droplets getting inside your mask or escaping from your mask if you are sick.

DO



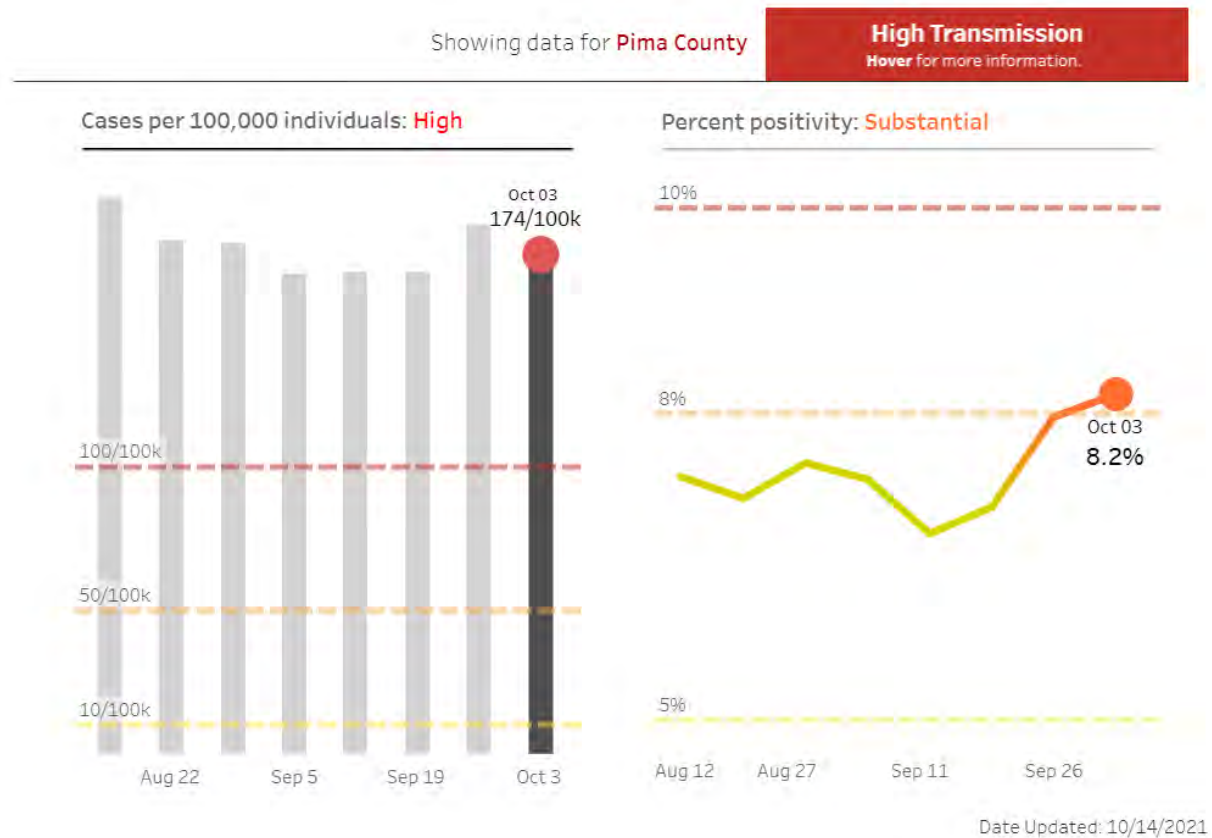
- Choose a mask with a **Nose Wire**
 - A nose wire is a metal strip along the top of the mask
 - Nose wires prevent air from leaking out of the top of the mask.
 - Bend the nose wire over your nose to fit close to your face.
- Use a **Mask Fitter or Brace**
 - Use a mask fitter or brace over a disposable mask or a cloth mask to prevent air from leaking around the edges of the mask.
- Check that it **Fits Snugly** over your nose, mouth, and chin
 - Check for gaps by cupping your hands around the outside edges of the mask.
 - Make sure no air is flowing from the area near your eyes or from the sides of the mask.
 - If the mask has a good fit, you will feel warm air come through the front of the mask and may be able to see the mask material move in and out with each breath.
- Add **Layers** of material
 - 2 ways to layer
 - Use a cloth mask that has multiple layers of fabric.
 - Wear one disposable mask underneath a cloth mask.
 - The second mask should push the edges of the inner mask against your face.
- **Make sure you can see and breathe easily**
 - **Knot and Tuck** ear loops of a 3-ply mask
 - Knot the ear loops of a 3-ply face mask where they join the edge of the mask
 - Fold and tuck the unneeded material under the edges
- For video instructions, see: <https://youtu.be/UANi8Cc71A0>^{external icon}.



Adapted from: <https://www.cdc.gov/coronavirus/2019-ncov/your-health/effective-masks.html> Accessed 2/24/2021

Arizona COVID-19 School Benchmarks

On March 2nd, 2021 CDC announced updated school guidance. The Arizona Department of Health Developed Community Transmission to Reflect Level of Community Risk: CDC recommends the use of two measures of community burden to determine the level of community transmission. These measures assess the incidence and spread of COVID-19 in the community, not the school itself. Risk is dependent on community level transmission **and** implementation of school and community mitigation strategies.



| Indicator | Low Transmission | Moderate Transmission | Substantial Transmission | High Transmission |
|---|------------------|-----------------------|--------------------------|-------------------|
| Total new cases per 100,000 persons in the last 7 days | 0 – 9 | 10 – 49 | 50 – 99 | ≥ 100 |
| Percentage of nucleic acid amplification tests (NAATs) that are positive during the past 7 days | <5.0% | 5.0% – 7.9% | 8.0% – 9.9% | ≥ 10.0% |

Arizona Department of Health Services, <https://www.azdhs.gov/documents/preparedness/epidemiology-disease-control/infectious-disease-epidemiology/novel-coronavirus/schools/school-benchmarks.pdf>, accessed 3/11/21.

COVID-19 GUIDANCE ON HOME ISOLATION AND QUARANTINE

Tohono O'odham Nation Health Care has updated guidance on isolation and quarantine to align with recent changes to CDC recommendations. For reference, quarantine is defined as separating yourself from all persons in your home if you may have been exposed to the virus. Isolation refers to being symptomatic or infected with the virus, and separating yourself from all persons in your home.

Quarantine Guidance (as of 8/5/2021)

Health care workers at TONHC: if fully vaccinated and close contact exposure, and no symptoms (asymptomatic)

- Get tested by COVID-19 PCR on Day 5 (or as close to day 5 as possible) to determine if transmission occurred
- Can continue to go to work
- Facemask to be worn at all the time around others for 14-calendar days post exposure and per TONHC policy. Note: all health care workers are required to wear a surgical facemask at all times at TONHC.
- If healthcare worker develops COVID-19 related symptoms (e.g., fever of ≥ 100.0 degrees Fahrenheit or respiratory symptoms), they must cease patient care activities immediately, notify their supervisor and employee health, and leave worksite to prevent exposure of others.

Note: all health care workers are to check for symptoms and fever prior to working. Do not come to work if you have symptoms.

Community members: if fully vaccinated and close contact exposure, and no symptoms (asymptomatic)

- Quarantine immediately, stay home until end of quarantine.
- Get tested by PCR at least 5 days from exposure (test at 5 days after exposure and up to day 14)
- In some cases, quarantine can end after 7 full days, if negative test result and no symptoms (if test done within 48 hours of end of quarantine date). Your medical provider or public health team will let you know the end of the quarantine date.
- If not tested for any reason or at the recommendation of public health nursing or medical provider, quarantine may end 10 full days from COVID-19 exposure
- Facemask to be worn at all times when around other people for 14-calendar days post exposure

Community members: if unvaccinated and close contact exposure, and no symptoms (asymptomatic)

- Quarantine immediately, stay home until end of quarantine.
- Get tested by PCR at least 5 days from exposure (test at 5 days after exposure and up to day 14)
- Quarantine will end 10 full days from COVID-19 exposure
- In some special cases, quarantine can end after 7 full days, if negative test result and no symptoms (if test done within 48 hours of end of quarantine date). Your medical provider or public health team will let you know the end of your quarantine date.
- Facemask to be worn at all times when around other people for 14-calendar days post exposure

*Special exception: Must quarantine for 14 days if in a congregate setting

Close contact exposure: within 6 feet for a cumulative total of 15 minutes or more over a 24-hour period

Close contact exposure for health care worker includes in addition: prolonged exposure to patients with COVID-19 infection when the health care workers eyes, nose, or mouth are not covered (not wearing appropriate PPE).

<https://www.cdc.gov/coronavirus/2019-ncov/hcp/guidance-risk-assessment-hcp.html>

For more information on home isolation guidance, please contact TONHC Public Health Nursing Department.

Coronavirus Disease 2019 (COVID-19): HOME ISOLATION GUIDANCE

If you tested positive for COVID-19, you need to stay in ISOLATION:

Isolation is for people who have tested **positive** or have symptoms consistent with COVID-19 and are waiting to be tested or diagnosed. It prevents the spread of COVID-19 by asking people who have COVID-19 (or those with symptoms) to stay away from others until they have fully recovered and can no longer transmit the virus. You should stay in a specific "sick room," if possible, and away from other people in your home.

If you tested **POSITIVE** for COVID-19 **or** have symptoms of COVID-19, you should stay **isolated** at home for a specified period of time – usually around 10 days.

Stay isolated means you need to:

- **Separate** yourself from others in your home, as much as possible. Stay in a separate room and use a separate bathroom, if possible. If you cannot separate from others at home, you need to wear a mask.
- **Do not attend** work, school, be in public areas or use public transportation.
- **Avoid sharing** household items like dishes, cups, eating utensils, and bedding.
- **Cover** coughs and sneezes with a tissue or your elbow. Throw away used tissues in the trash and wash your hands.
- **Avoid touching** your eyes, nose, and mouth.
- **Wash your hands** often with soap and warm water for at least 20 seconds.
- **Clean** high-touch surfaces (tables, doorknobs, light switches, countertops, handles, desks, phones, keyboards, toilets, etc.) daily.
- **Reschedule** all non-essential medical appointments. If you need medical care, call your provider **before going**, and tell them about your illness.
- **Monitor** your symptoms and seek medical care if your illness is worsening.

The number of days you need to stay isolated at home depends on:

- Your COVID-19 test result;
- Your symptoms;
- If you were a close contact of someone with COVID-19;
- How sick you were; and
- If you are severely immunocompromised.

Symptoms of COVID-19 can range from mild to severe illness, may appear 2 – 14 days after exposure and may include:

| | | |
|------------------------------|---|----------------------------|
| Fever or chills | Shortness of breath or difficulty breathing | New loss of taste or smell |
| Cough | Muscle or body aches | Headache |
| Nausea or vomiting, diarrhea | Sore Throat | Congestion or runny nose |
| | | Fatigue |

Close Contacts are people who were **within 6 feet** of a person with COVID-19 while infectious for a **cumulative total of 15 minutes or more over a 24-hour period** or who had **physical contact** with a person with COVID-19 while infectious, regardless of whether masks were worn.

Please look at the chart on the back of this sheet to help you figure out how long you should stay **isolated** at home. →

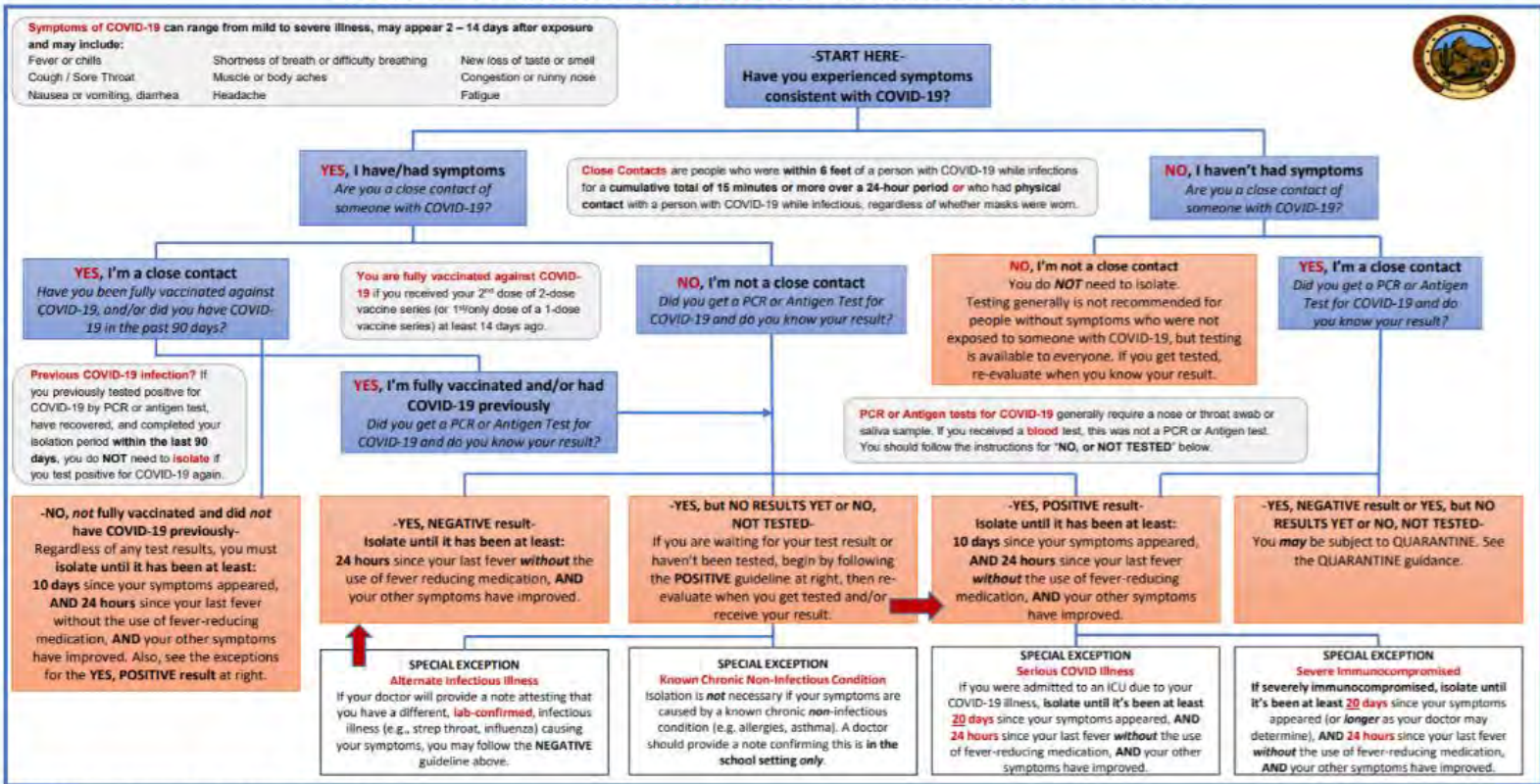
Contact your healthcare provider or Public Health Nursing for any questions. You can also review the CDC website at: <https://www.cdc.gov/coronavirus/2019-ncov/symptoms-testing/symptoms.html>

TOHONO O'ODHAM NATION HEALTH CARE

Updated 5/4/2021 (Subject to change as new information becomes available. Please look for the most up-to-date recommendations).



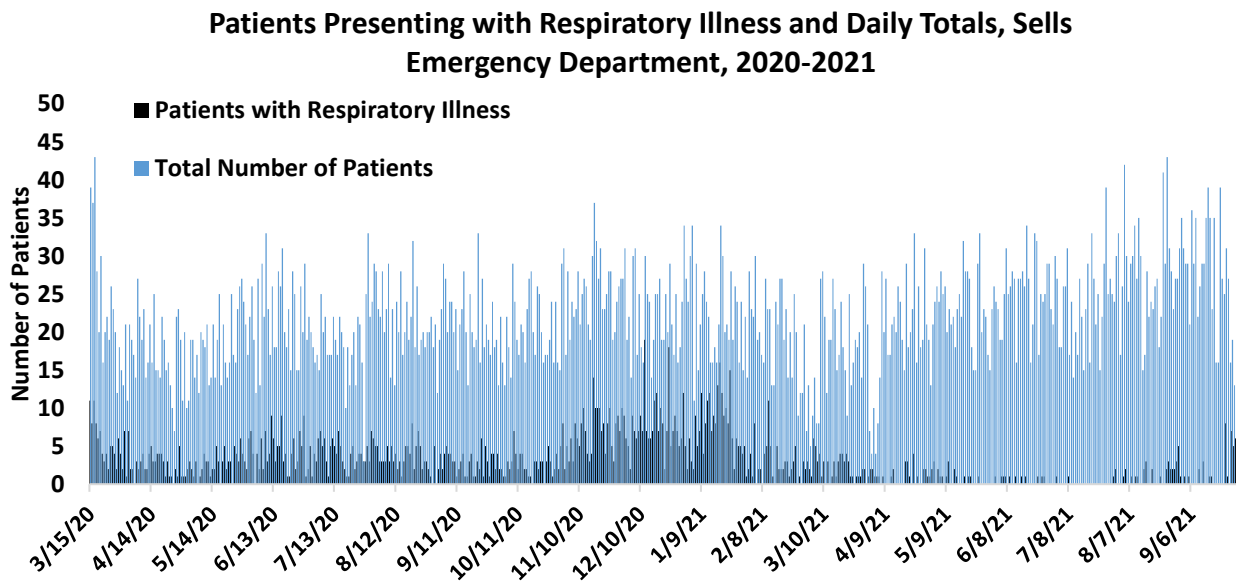
COVID-19 Home Isolation Guidance Flow Chart



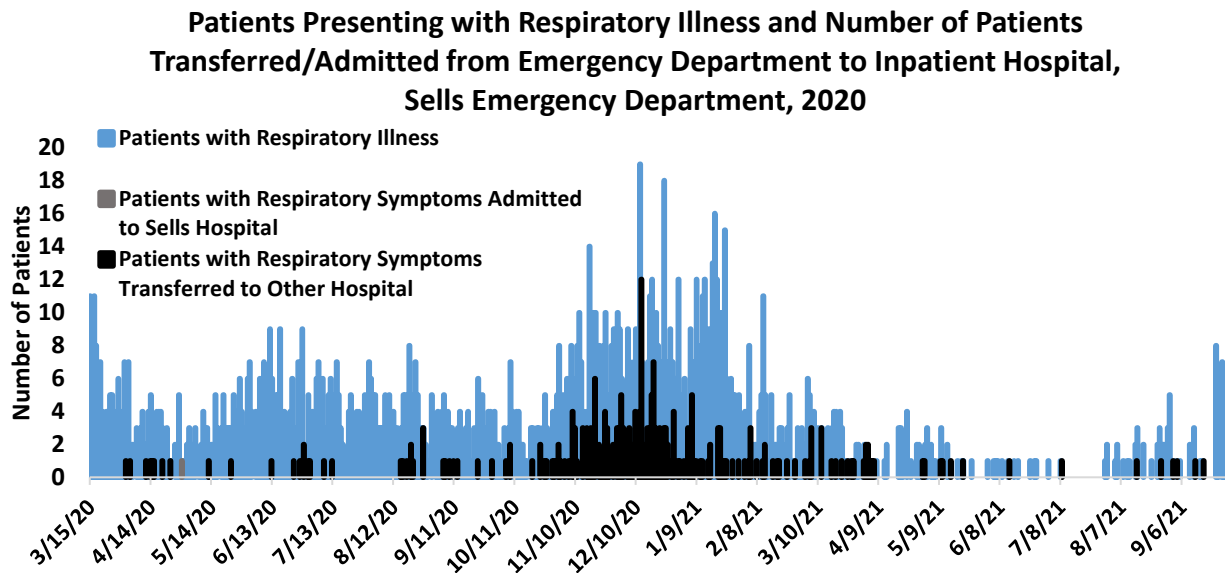
TOHONO O'ODHAM NATION HEALTH CARE

Updated 5/4/2021 (Subject to change as new information becomes available. Please look for the most up-to-date recommendations).

Sells Emergency Department Syndromic Surveillance

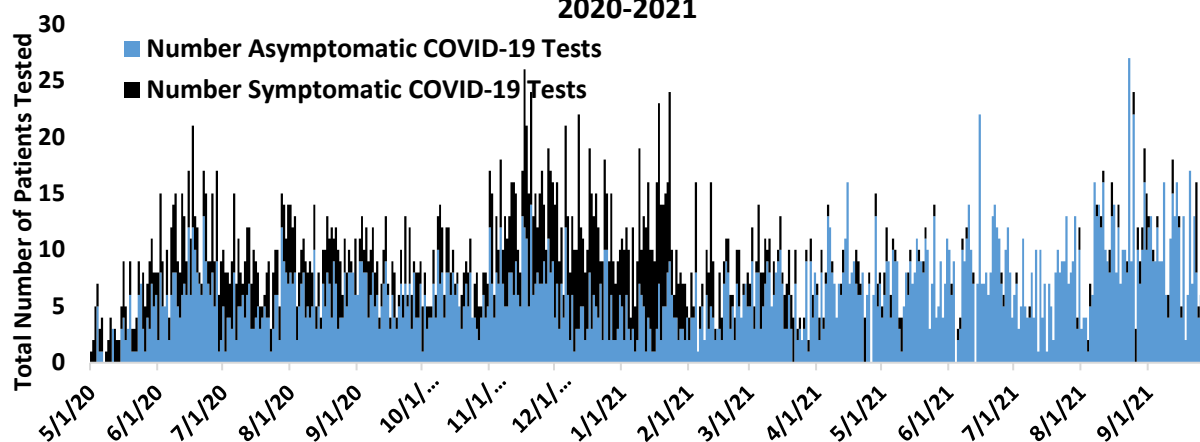


Syndromic surveillance refers to detection of indicators that are discernible before confirmed diagnoses are made. For example, an increase in the number of patients seen with respiratory symptoms could be an indicator of COVID-19. There were 27 patients seen in Sells Emergency Department with respiratory symptoms during the week of 9/22/2021- 9/28/2021.



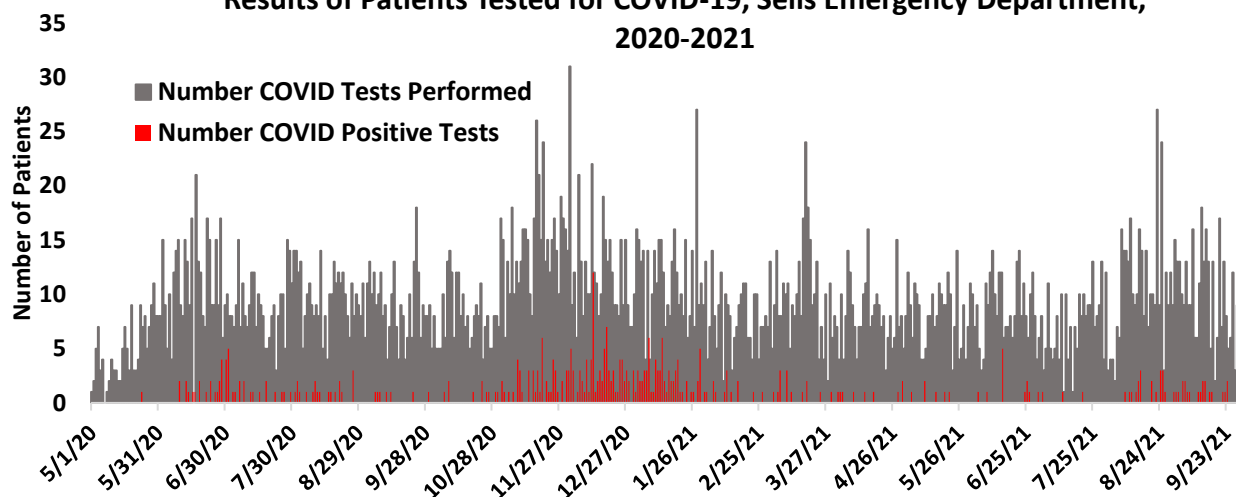
As of 9/28/2021, there were 2 admissions to Sells Hospital and 253 outside transfers for respiratory symptoms from Sells Emergency Department. The number of patients transferred from the emergency department to hospital inpatient units helps to identify severity of disease among the population. This is a level of disease severity that requires a higher level of care, such that care must be managed in the hospital (e.g. with oxygen, mechanical ventilation, etc.).

Patients Tested for COVID-19, Sells Emergency Department, 2020-2021



Same-day COVID-19 testing began on 4/20/20. From 9/22/21– 9/28/21, between 16 and 31 patients were seen each day in the emergency department. Asymptomatic tests are performed on people who have no symptoms (no cough, no diarrhea, no fever, etc.). Symptomatic tests refer to tests performed on people who have symptoms (cough, fever, diarrhea, etc.) of COVID-19.

Results of Patients Tested for COVID-19, Sells Emergency Department, 2020-2021



The week of 9/22/21 – 9/28/21, 3 persons seen in the emergency department tested positive for COVID-19. There have been 381 total positive test results from tests performed in Sells emergency department as of 9/29/2021, 7:00.

Door to transfer time, the amount of time it takes to transfer a patient to another facility for higher-level care from the time they entered the emergency department, has increased dramatically for Sells Emergency Department since August 2021 due to COVID-19. September door to transfer time was over 500 minutes. As higher-level care hospitals continue to see increased COVID-19 cases, Sells ED patients will continue seeing increased wait times.

| Month | Door-to-Transfer time for Sells Hospital ED |
|----------------|---|
| June 2021 | 262 minutes |
| July 2021 | 292 minutes |
| August 2021 | 402 minutes |
| September 2021 | 530 minutes |

EMPLOYEE HEALTH

All employees at TONHC must wear a procedure/surgical mask while at work. All employees in patient care areas must wear a procedure/surgical mask and eye protection. All employees in areas with patients with suspected or confirmed COVID-19 must wear N95 respirator, eye protection, gloves, and gown.

There have been 89 Cases of COVID-19 among TONHC employees. Each positive result has prompted an internal and external investigation and contact tracing. Based on these investigations, transmissions were more likely due to community spread. Employees possibly exposed are tested for COVID-19.

All employees are required to contact Employee Health with any call-outs. This is to ensure that employees are tested for COVID-19 if sick or exposed and given appropriate guidance on when to return to work. Employees are also required to contact their supervisor when they call out.

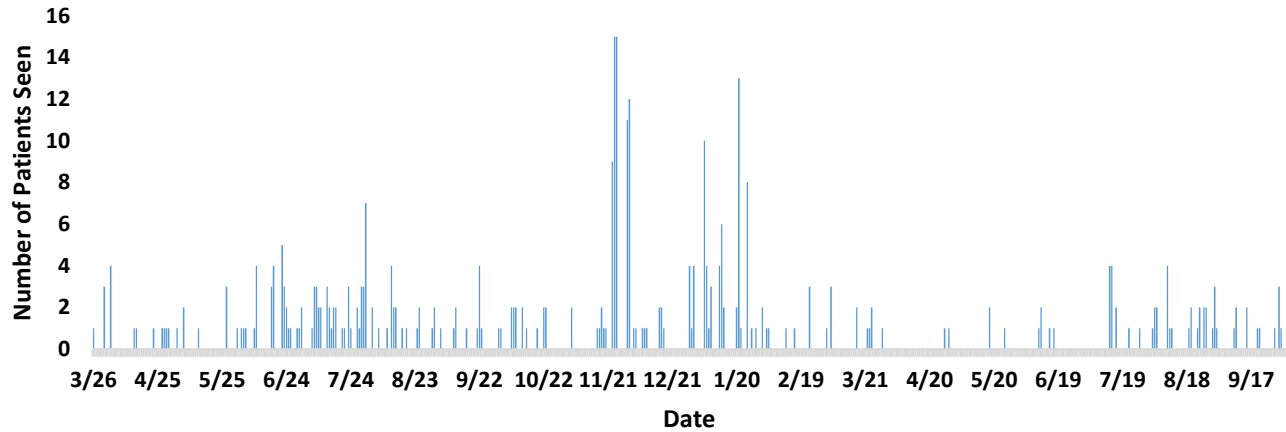
TONHC Infection Control

Infection control prevents or stops the spread of infections in healthcare settings. TONHC COVID-19 infection control team monitors, tracks, and provides guidance on personal protective equipment (PPE such as gowns, gloves, face shields, N95 respirators).

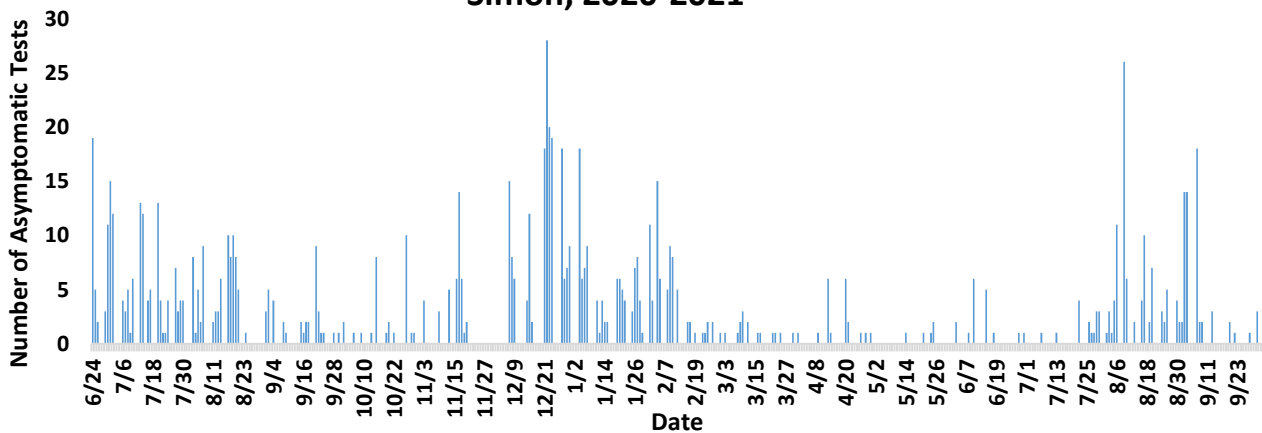
- At the San Xavier, Sells, and San Simon Health Care Centers, the Battelle CCDS Critical Care Decontamination System™ program ended on 3/31/21 and now contingency N95 strategies are in use.
- All staff are wearing procedure/surgical masks, and staff caring for patients are also wearing eye protection.
- Staff caring for patients that have or may have been exposed to COVID-19 are wearing gowns, gloves, face shields or other eye protection, and N95 respirators or Powered Air Purifying Respirators (PAPRs).

CLINIC – SAN SIMON

**Number of Patients seen at San Simon Respiratory Clinic,
2020-2021**



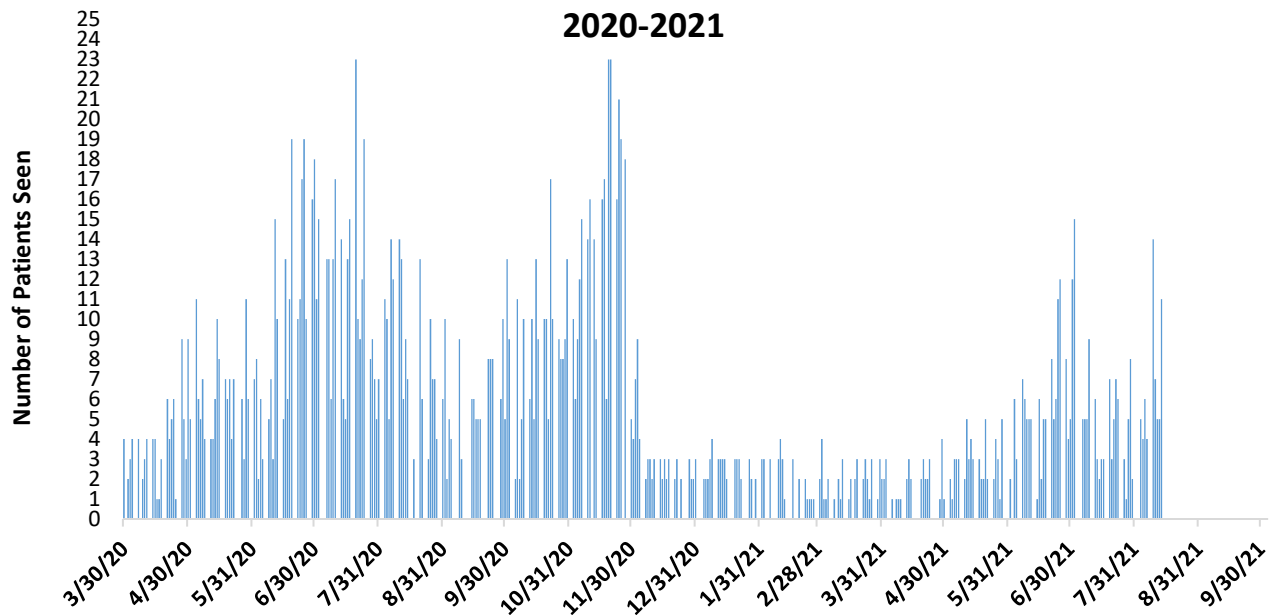
**Number of COVID-19 Asymptomatic Tests Performed at San
Simon, 2020-2021**



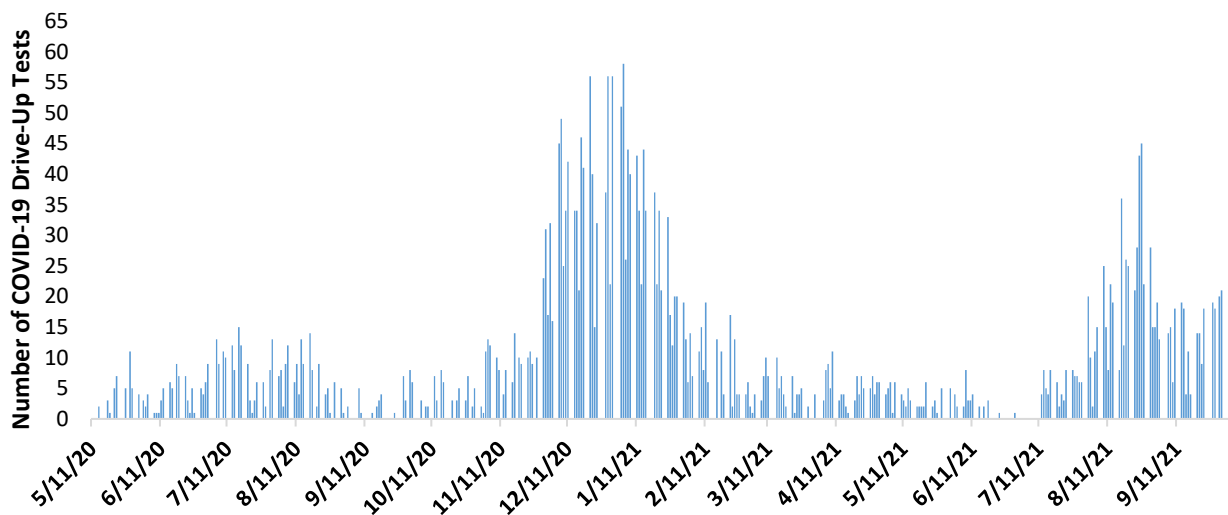
These are the number of COVID-19 tests performed on patients that have no symptoms of COVID-19 (no fever, no cough, no difficulty breathing, etc.), or patients who are symptomatic but only desire to be tested. They are performed on people who have may have had exposure to COVID-19, are entering a congregate setting, or are going to be admitted to the hospital.

CLINIC – SAN XAVIER

**Number of Patients seen at San Xavier Respiratory Clinic,
2020-2021**



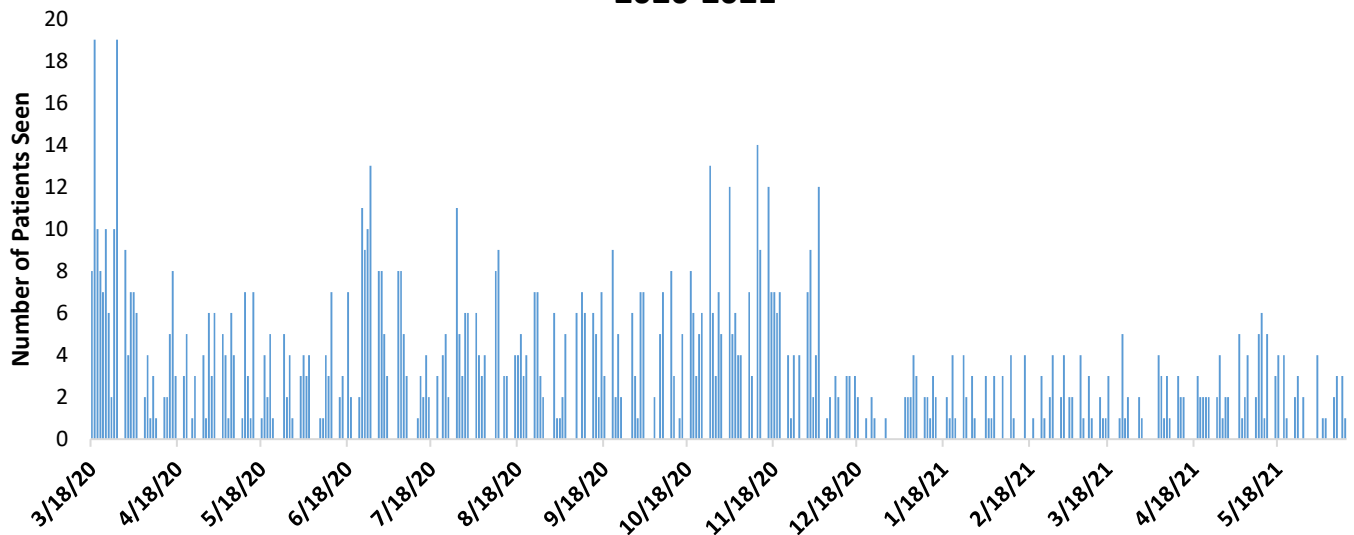
**Number of Drive-Up COVID-19 Tests Performed at San Xavier
Respiratory Clinic, 2020-2021**



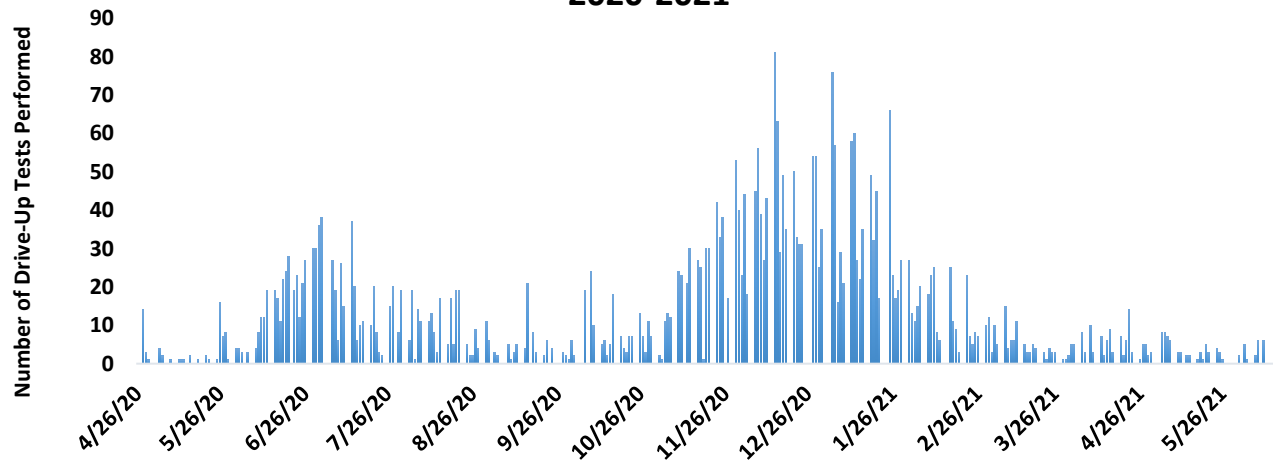
Drive-Up testing includes both symptomatic and asymptomatic patients, with testing for symptomatic patients beginning in November at San Xavier Clinic. Asymptomatic testing is for patients that have no symptoms of COVID-19 (no fever, no cough, no difficulty breathing, etc.). They are performed on people who may have had exposure to COVID-19, are entering a congregate setting, or are going to be admitted to the hospital. Patients who have COVID-19 symptoms may be offered a drive up test instead of a Respiratory Clinic visit.

CLINIC – SELLS

Number of Patients seen at Sells Respiratory Clinic, 2020-2021



Number of Drive-Up COVID-19 Tests Performed at Sells Clinic, 2020-2021



Drive-Up testing includes both symptomatic and asymptomatic patients, with testing for symptomatic patients beginning on 11/23/2020 at Sells Hospital. Asymptomatic testing is for patients that have no symptoms of COVID-19 (no fever, no cough, no difficulty breathing, etc.). They are performed on people who may have had exposure to COVID-19, are entering a congregate setting, or are going to be admitted to the hospital. Patients who have COVID-19 symptoms may be offered a drive up test instead of a Respiratory Clinic visit.

Due to changes in scheduling formats, covid testing rates for Sells Hospital are currently unavailable.

SELLS INPATIENT UNIT

To minimize possible exposure and conserve personal protective equipment, visitors are not allowed on the inpatient wards. Exceptions are for a minor, woman in labor, and other special circumstances. In accordance with state enhanced surveillance advisory related to COVID-19, daily information is reported to Arizona State using EMResource.

Since the beginning of the COVID-19 pandemic, five (5) COVID-19 positive patients have been admitted to Sells inpatient unit. To date in October 2021, 11 patients were admitted to Sells Hospital and zero (0) tested positive for COVID-19. Inpatient, in-hospital transportation, and postmortem protocols have been developed. Every patient admitted to the inpatient unit of Sells hospital is tested for COVID-19.

Med/Surge Bed Availability – 0 (10/13/2021)

Med/Surge Bed Capacity – As of 10/13/2021, inpatient is currently staffed for one inpatient bed. Contract staff in process of completing training to increase inpatient staffing capacity.

No intensive care unit services

Negative Pressure Rooms – 2 inpatient rooms, 1 in emergency department (inpatient rooms are used by emergency department or other clinics when indicated).

The Arizona Surge Line is used for all transfers outside of TONHC. The Arizona Surge Line is a 24/7 toll-free statewide system activated 4/22/20 to keep hospitals and regions of Arizona from being overwhelmed by facilitating COVID-19 patient admission, transfer, and discharge to appropriate levels of care.

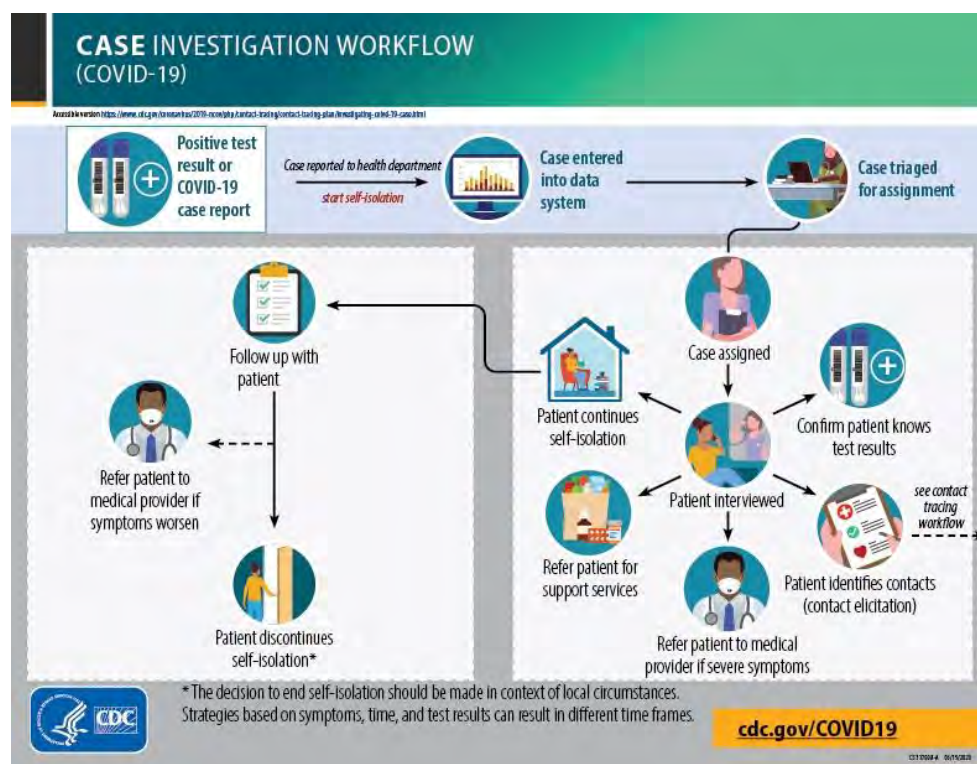
Our outpatient clinic staff has been cross-trained in inpatient patient care and brought on contract health care employees to fill the critical short staffing of inpatient. Cross training and contractors will allow us to increase the number of patients we can take care of on the inpatient unit. As of October 13, 2021, 4 contract inpatient staff are currently in the process of orientation (2RN, 1 LPN, and 1 CNA). Outpatient department (OPD) contractors (1FNP, 1RN) are cross-trained and assisting with inpatient's critical short staffing. Additional administrative assistance has been received from patient registration and various OPD administration to serve as unit clerks, providing an inpatient unit clerk 7-days a week. There are 8 full time TONHC employees that staff inpatient and assist with orientation. Once contractors complete training, the goal is to maintain a 1:4 nurse to patient ratio.

Please note that Sells hospital is not an intensive care unit, so we cannot take care of patients with COVID-19 requiring intensive respiratory treatment. These patients are transferred to intensive care units at other sites.

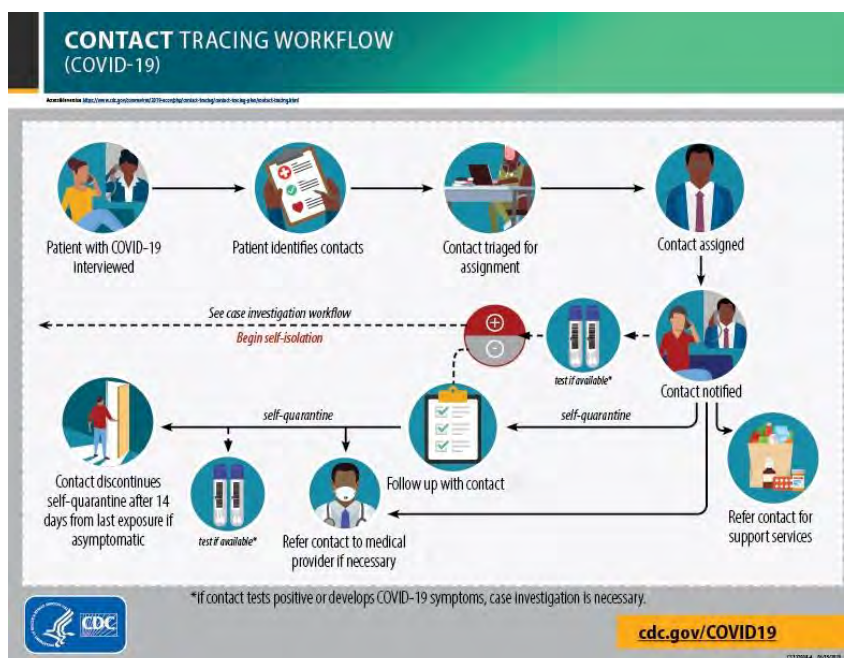
PUBLIC HEALTH NURSING – CONTACT TRACING

As of 10/13/21 at 7:00, 4,441 individual contact tracings have occurred in the Tohono O'odham Nation.

TONHC public health nursing conducts case investigation and contact tracing (involves interviewing). Case investigations are initiated on everyone who tests positive for COVID-19.



Contact tracing, a core disease control measure, is a key strategy for preventing further spread of COVID-19. Contact tracing is part of the process of supporting patients with suspected or confirmed infection. In contact tracing, public health nursing works with patients to help them recall everyone with whom they have had close contact during the timeframe in which they may have been infectious. To protect patient privacy, contacts are only informed that they may have been exposed to a patient with the infection. They are not told the identity of the patient who may have exposed them. Contacts are provided with education, information, and support to understand their risk, what they should do to separate themselves from others who are not exposed, how to monitor themselves for illness, and the possibility that they could spread the infection to others even if they themselves do not feel ill.



APPENDIX

Confirmed COVID-19 Cases and Absolute Change among Enrolled Tohono O'odham Nation Members by Week, 2020-2021*

| Week (2020) | Cumulative COVID-19 Cases Among Enrolled Tohono O'odham Tribal Members | Absolute Change [§] in Cumulative Case Counts from Previous Week |
|---|--|---|
| June 24 th – June 30 th | 208 | |
| July 1 st – July 7 th | 265 | 57 |
| July 8 th – July 14 th | 324 | 59 |
| July 15 th – July 21 st | 349 | 25 |
| July 22 nd – July 28 th | 382 | 33 |
| July 29 th – August 4 th | 421 | 39 |
| August 5 th – August 11 th | 468 | 47 |
| August 12 th – August 18 th | 501 | 33 |
| August 19 th – August 25 th | 513 | 12 |
| August 26 th – September 1 st | 523 | 10 |
| September 2 nd – September 8 th | 532 | 9 |
| September 9 th – September 15 th | 546 | 14 |
| September 16 th – September 22 nd | 546 | 0 |
| September 23 rd – September 29 th | 547 | 1 |
| September 30 th – October 6 th | 549 | 2 |
| October 7 th – October 13 th | 560 | 11 |
| October 14 th – October 20 th | 566 | 6 |
| October 21 st – October 27 th | 584 | 18 |
| October 28 th – November 3 rd | 597 | 13 |
| November 4 th – November 10 th | 637 | 40 |
| November 11 th – November 17 th | 687 | 50 |
| November 18 th – November 24 th | 744 | 57 |
| November 25 th – December 1 st | 805 | 61 |
| December 2 nd – December 8 th | 890 | 85 |
| December 9 th – December 15 th | 1017 | 127 |
| December 16 th – December 22 nd | 1109 | 92 |
| December 23 rd – December 29 th | 1191 | 82 |
| December 30 th – January 5 th | 1322 | 131 |
| January 6 th – January 12 th | 1444 | 122 |
| January 13 th – January 19 th | 1530 | 86 |
| January 20 th – January 26 th | 1624 | 94 |
| January 27 th – February 2 nd | 1671 | 47 |
| February 3 rd – February 9 th | 1705 | 34 |
| February 10 th – February 16 th | 1728 | 23 |
| February 17 th – February 23 rd | 1746 | 18 |
| February 24 th – March 2 nd | 1752 | 6 |
| March 3 rd – March 9 th | 1758 | 6 |
| March 10 th – March 16 th | 1759 | 1 |
| March 17 th – March 23 rd | 1761 | 2 |
| March 24 th – March 30 th | 1763 | 2 |
| March 31 st – April 6 th | 1764 | 1 |

| | | |
|---|------|----|
| April 7 th – April 13 th | 1766 | 2 |
| April 14 th – April 20 th | 1770 | 4 |
| April 21 st – April 27 th | 1772 | 2 |
| April 28 th – May 4 th | 1780 | 8 |
| May 5 th – May 11 th | 1789 | 9 |
| May 12 th – May 18 th | 1790 | 1 |
| May 19 th – May 25 th | 1793 | 3 |
| May 26 th – June 1 st | 1794 | 1 |
| June 2 nd – June 8 th | 1800 | 6 |
| June 9 th – June 15 th | 1818 | 18 |
| June 16 th – June 22 nd | 1820 | 2 |
| June 23 rd – June 29 th | 1823 | 3 |
| June 30 – July 6 th | 1825 | 2 |
| July 7 th – July 13 th | 1832 | 7 |
| July 14 th –July 20 th | 1839 | 7 |
| July 21 st – July 27 th | 1850 | 11 |
| July 28 th – August 3 rd | 1876 | 26 |
| August 4 th – August 10 th | 1897 | 21 |
| August 11 th – August 17 th | 1925 | 28 |
| August 18 th – August 24 th | 1950 | 25 |
| August 25 th – August 31 st | 1976 | 26 |
| September 1 st – September 7 th | 1991 | 15 |
| September 8 th – September 14 th | 2010 | 19 |
| September 15 th – September 21 st | 2014 | 4 |
| September 22 nd – September 28 th | 2026 | 12 |
| September 29 th – October 5 th | 2040 | 14 |
| October 6 th – October 12 th | 2075 | 35 |

*changes due to added cases

Confirmed COVID-19 Cases and Absolute Change among Enrolled Tohono O'odham Nation Members Residing within the Tohono O'odham Nation by Week, 2020-2021*

| Week (2020) | Cumulative COVID-19 Cases Among Enrolled Tohono O'odham Tribal Members Residing within the Tohono O'odham Nation Boundary | Absolute Change[§] in Cumulative Case Counts from Previous Week |
|---|--|---|
| June 24 th – June 30 th | 87 | |
| July 1 st – July 7 th | 116 | 29 |
| July 8 th – July 14 th | 163 | 47 |
| July 15 th – July 21 st | 182 | 19 |
| July 22 nd – July 28 th | 204 | 22 |
| July 29 th – August 4 th | 234 | 30 |
| August 5 th – August 11 th | 272 | 38 |
| August 12 th – August 18 th | 299 | 27 |
| August 19 th – August 25 th | 309 | 10 |
| August 26 th – September 1 st | 319 | 10 |
| September 2 nd – September 8 th | 326 | 7 |
| September 9 th – September 15 th | 340 | 14 |
| September 16 th – September 22 nd | 340 | 0 |

| | | |
|---|------|----|
| September 23 rd – September 29 th | 340 | 0 |
| September 30 th – October 6 th | 341 | 1 |
| October 7 th – October 13 th | 349 | 8 |
| October 14 th – October 20 th | 352 | 3 |
| October 21 st – October 27 th | 358 | 6 |
| October 28 th – November 3 rd | 369 | 11 |
| November 4 th – November 10 th | 402 | 32 |
| November 11 th – November 17 th | 437 | 35 |
| November 18 th – November 24 th | 485 | 48 |
| November 25 th – December 1 st | 528 | 43 |
| December 2 nd – December 8 th | 589 | 61 |
| December 9 th – December 15 th | 685 | 96 |
| December 16 th – December 22 nd | 747 | 62 |
| December 23 rd – December 29 th | 796 | 49 |
| December 30 th – January 5 th | 884 | 88 |
| January 6 th – January 12 th | 969 | 85 |
| January 13 th – January 19 th | 1031 | 62 |
| January 20 th – January 26 th | 1106 | 75 |
| January 27 th – February 2 nd | 1137 | 31 |
| February 3 rd – February 9 th | 1166 | 29 |
| February 10 th - February 16 th | 1179 | 13 |
| February 17 th – February 23 rd | 1191 | 12 |
| February 24 th – March 2 nd | 1195 | 4 |
| March 3 rd – March 9 th | 1199 | 4 |
| March 10 th – March 16 th | 1200 | 1 |
| March 17 th – March 23 rd | 1202 | 2 |
| March 24 th – March 30 th | 1204 | 2 |
| March 31 st – April 6 th | 1204 | 0 |
| April 7 th – April 13 th | 1204 | 0 |
| April 13 th – April 20 th | 1207 | 3 |
| April 21 st – April 27 th | 1207 | 0 |
| April 28 th – May 4 th | 1211 | 4 |
| May 5 th – May 11 th | 1220 | 9 |
| May 12 th – May 18 th | 1221 | 1 |
| May 19 th – May 25 th | 1223 | 2 |
| May 26 th – June 1 st | 1224 | 1 |
| June 2 nd – June 8 th | 1228 | 4 |
| June 9 th – June 15 th | 1244 | 16 |
| June 16 th – June 22 nd | 1245 | 1 |
| June 23 rd – June 29 th | 1246 | 1 |
| June 30 – July 6 th | 1247 | 1 |
| July 7 th – July 13 th | 1253 | 6 |
| July 14 th – July 20 th | 1258 | 5 |
| July 21 st – July 27 th | 1263 | 5 |
| July 28 th – August 3 rd | 1282 | 19 |
| August 4 th – August 10 th | 1294 | 12 |

| | | |
|---|------|----|
| August 11 th – August 17 th | 1312 | 18 |
| August 18 th – August 24 th | 1324 | 12 |
| August 25 th – August 31 st | 1339 | 15 |
| September 1 st – September 7 th | 1344 | 5 |
| September 8 th – September 14 th | 1353 | 9 |
| September 15 th – September 21 st | 1355 | 2 |
| September 22 nd – September 28 th | 1363 | 8 |
| September 29 th – October 5 th | 1370 | 7 |
| October 6 th – October 12 th | 1393 | 23 |

*Changes due to added cases and reclassification of residence

TONHC COVID-19 Positive Test Results and Absolute Change by Week, 2020-2021

| Week (2020) | TONHC Cumulative Positive COVID-19 Test Results | Absolute Change [†] in Positive Test Results from Previous Week |
|---|---|--|
| June 24 th – June 30 th | 153 | |
| July 1 st – July 7 th | 202 | 49 |
| July 8 th – July 14 th | 251 | 49 |
| July 15 th – July 21 st | 278 | 27 |
| July 22 nd – July 28 th | 302 | 24 |
| July 29 th – August 4 th | 342 | 40 |
| August 5 th – August 11 th | 382 | 40 |
| August 12 th – August 18 th | 403 | 21 |
| August 19 th – August 25 th | 416 | 13 |
| August 26 th – September 1 st | 426 | 10 |
| September 2 nd – September 8 th | 431 | 5 |
| September 9 th – September 15 th | 444 | 13 |
| September 16 th – September 22 nd | 445 | 1 |
| September 23 rd – September 29 th | 447 | 2 |
| September 30 th – October 6 th | 449 | 2 |
| October 7 th – October 13 th | 457 | 8 |
| October 14 th – October 20 th | 464 | 7 |
| October 21 st – October 27 th | 487 | 23 |
| October 28 th – November 3 rd | 505 | 18 |
| November 4 th – November 10 th | 549 | 44 |
| November 11 th – November 17 th | 604 | 55 |
| November 18 th – November 24 th | 667 | 63 |
| November 25 th – December 1 st | 725 | 58 |
| December 2 nd – December 8 th | 824 | 99 |
| December 9 th – December 15 th | 962 | 138 |
| December 16 th – December 22 nd | 1066 | 104 |
| December 23 rd – December 29 th | 1148 | 82 |
| December 30 th – January 5 th | 1276 | 128 |
| January 6 th – January 12 th | 1409 | 133 |
| January 13 th – January 19 th | 1497 | 88 |

TONHC Situation Update 10/13/2021 7:00

Wear a mask, physically distance, and wash your hands to protect Tohono O'odham Nation

| | | |
|---|------|----|
| January 20 th – January 26 th | 1584 | 87 |
| January 27 th – February 2 nd | 1630 | 46 |
| February 3 rd – February 9 th | 1664 | 34 |
| February 10 th – February 16 th | 1689 | 25 |
| February 17 th – February 23 rd | 1706 | 17 |
| February 24 th – March 2 nd | 1711 | 5 |
| March 3 rd – March 9 th | 1723 | 12 |
| March 10 th – March 16 th | 1729 | 6 |
| March 17 th – March 23 rd | 1731 | 2 |
| March 24 th – March 30 th | 1736 | 5 |
| March 31 st – April 6 th | 1739 | 3 |
| April 7 th – April 13 th | 1743 | 4 |
| April 13 th – April 20 th | 1747 | 4 |
| April 21 st – April 27 th | 1748 | 1 |
| April 28 th – May 4 th | 1755 | 7 |
| May 5 th – May 11 th | 1764 | 9 |
| May 12 th – May 18 th | 1765 | 1 |
| May 19 th – May 25 th | 1768 | 3 |
| May 26 th – June 1 st | 1768 | 0 |
| June 2 nd – June 8 th | 1774 | 6 |
| June 9 th – June 15 th | 1792 | 18 |
| June 16 th – June 22 nd | 1794 | 2 |
| June 23 rd – June 29 th | 1798 | 4 |
| June 30 – July 6 th | 1800 | 2 |
| July 7 th – July 13 th | 1803 | 3 |
| July 14 th – July 20 th | 1810 | 7 |
| July 21 st – July 27 th | 1823 | 13 |
| July 28 th – August 3 rd | 1853 | 30 |
| August 4 th – August 10 th | 1878 | 25 |
| August 11 th – August 17 th | 1906 | 28 |
| August 18 th – August 24 th | 1932 | 26 |
| August 25 th – August 31 st | 1965 | 33 |
| September 1 st – September 7 th | 1978 | 13 |
| September 8 th – September 14 th | 1996 | 18 |
| September 15 th – September 21 st | 2005 | 9 |
| September 22 nd – September 28 th | 2019 | 14 |
| September 29 th – October 5 th | 2035 | 16 |
| October 6 th – October 12 th | 2075 | 40 |